



Lenovo Yoga Tablet 2 830-F Battery Replacement

Before beginning, acquire a replacement battery...

Written By: Charles Rhode



INTRODUCTION

Before beginning, acquire a replacement battery from a retailer of your choice and begin with the device off and a clear, static-free workspace.

TOOLS:

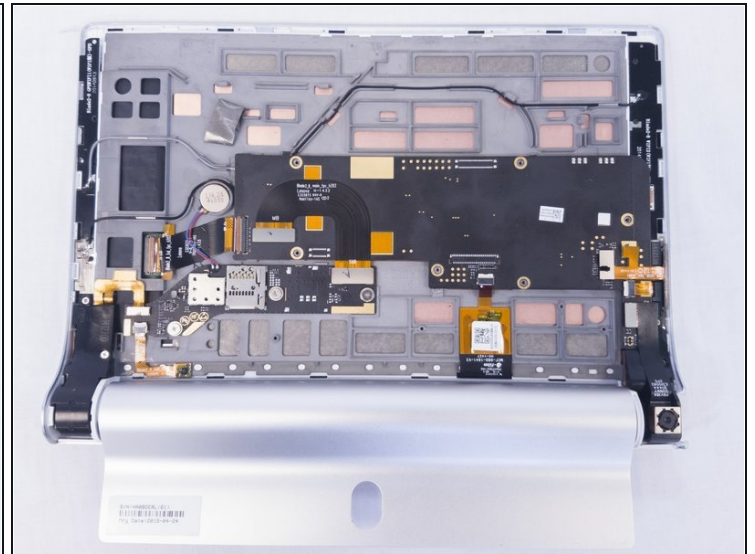
Phillips #00 Screwdriver (1)

Spudger (1)

iFixit Opening Tool (1)

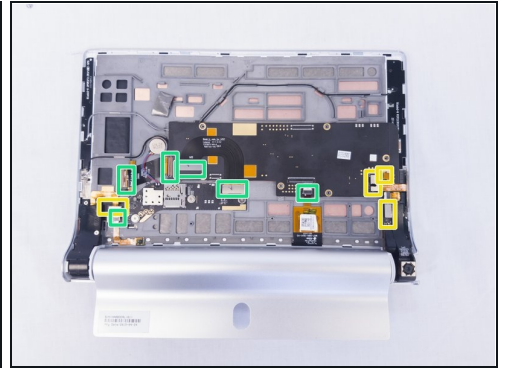
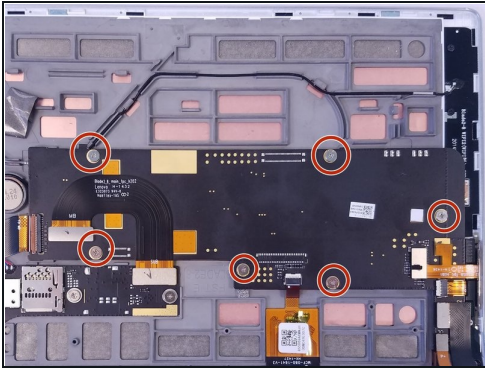
Tweezers (1)

Step 1 — Battery



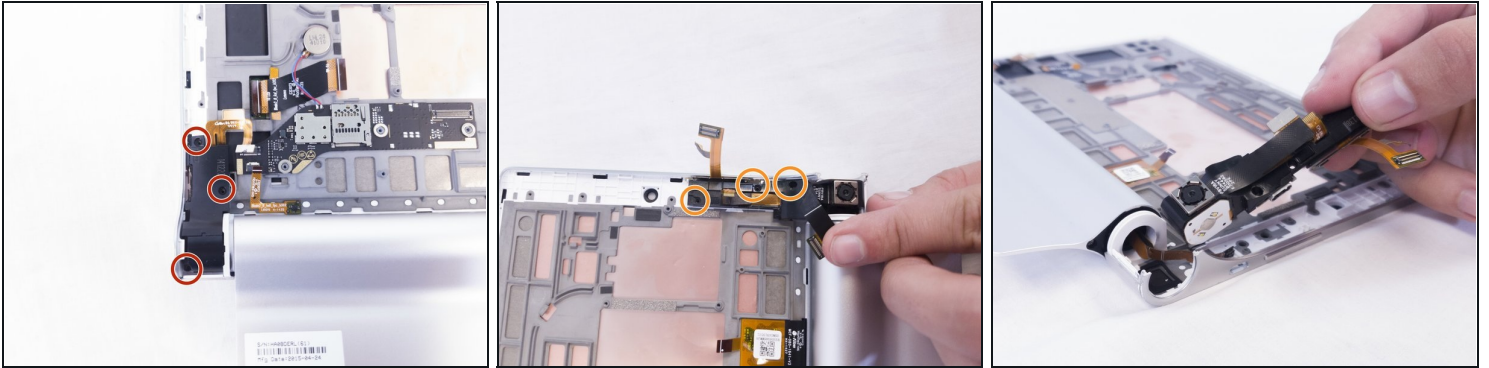
- Remove two 3mm screws on the back of the device with a Phillips #00 bit.
- Remove the single 2mm screw with a Phillips #00 bit.
- Using the blue opening tool or spudger, gently remove the back cover to expose the interior of the tablet.

Step 2



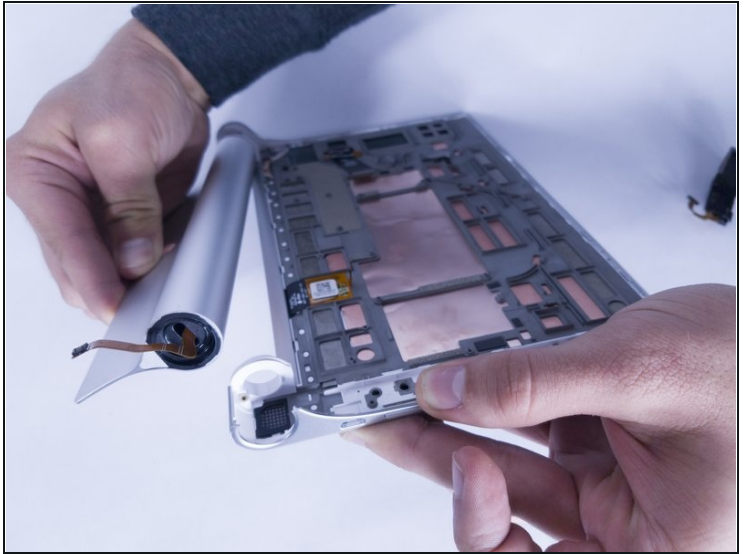
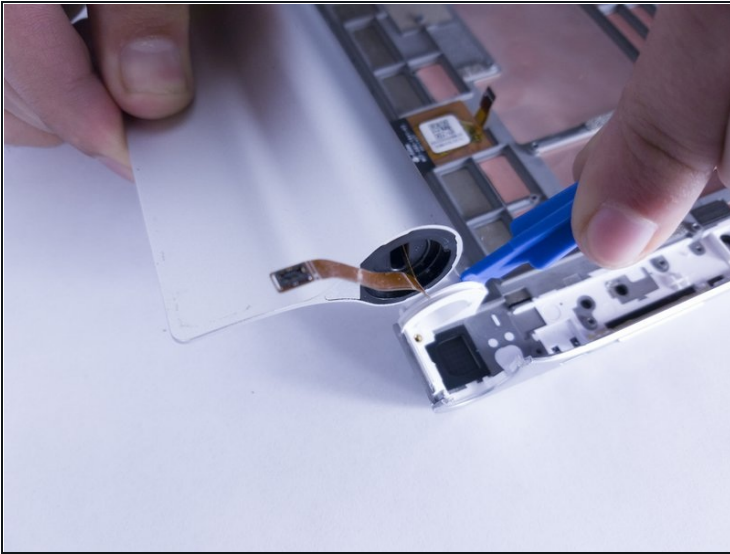
- Remove the six 3mm screws on the back of the motherboard with the Phillips Screwdriver #00 bit.
 - Remove the three 3mm screws on the back of the secondary board with the Phillips Screwdriver #00 bit.
 - Remove the ribbon cables connecting the boards to the other electrical components
 - Remove the ZIF connectors connecting the boards to the other electrical components
- ⚠ Some of the ribbon cables are secured with clips, simply pry up the clips before sliding them out of the pin connectors.

Step 3



- Remove the three 2mm screws on the back of the left speaker module with the Phillips Screwdriver #00 bit.
- Remove the three 2mm screws on the back of the right speaker module with the Phillips Screwdriver #00 bit.
- Gently remove both the left and right speaker modules.

Step 4



- Using the blue opening tool or spudger, pry the battery compartment off of the high located on the right hand side of the back.
- ⚠ This may require a decent amount of force to accomplish. If you feel like the white plastic holder will break, try using the spudger at a different angle.
- ⚠ Do not attempt to use the spudger on the right hand side of the device. It must be done on the left side.

Step 5



- Remove this metallic sticker with your fingernail to expose the screw underneath.
- Remove the 3mm screw under the sticker with the Phillips Screwdriver #00 bit.
- Using the [tweezers](#), pull off the black clip that secures the battery compartment. This may require some force.

Step 6



- Remove the hinge clip from one side of the battery compartment. Use the spudger tool if necessary.
- The battery should be able to slide from the compartment.

Step 7



- Replace the old battery with the new battery

⚠ Be careful not to damage the ribbon cable on the new battery when inserting it into the compartment and reassembling the device.

To reassemble your device, follow these instructions in reverse order.