



MSI GS60 6QE GHOST PRO 4K Hard disk drive Replacement

This guide is to do inspection or replace the hard disk drive, if it is not functioning properly.

Written By: Mafdy Wahib



INTRODUCTION

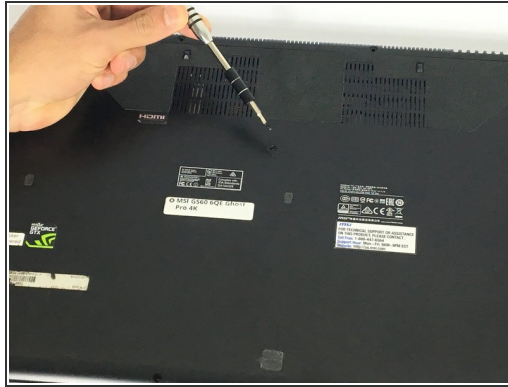
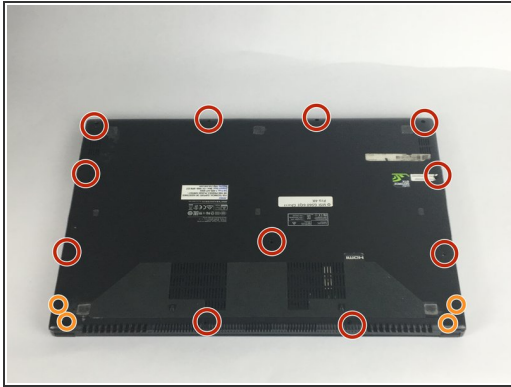
The hard drive is one of the easiest parts that can be replaced in the device. The only thing is do it with caution and not to cause any damages to the other wires next to it. Hard drive is clearly visible under the bottom cover and has only one wire above that needs to be disconnected.



TOOLS:

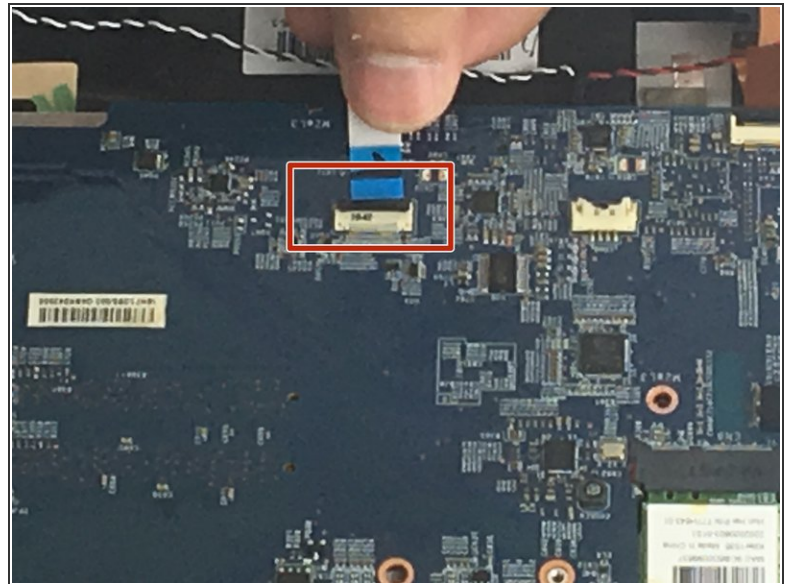
- [Phillips #0 Screwdriver](#) (1)
-

Step 1 — Hard disk drive



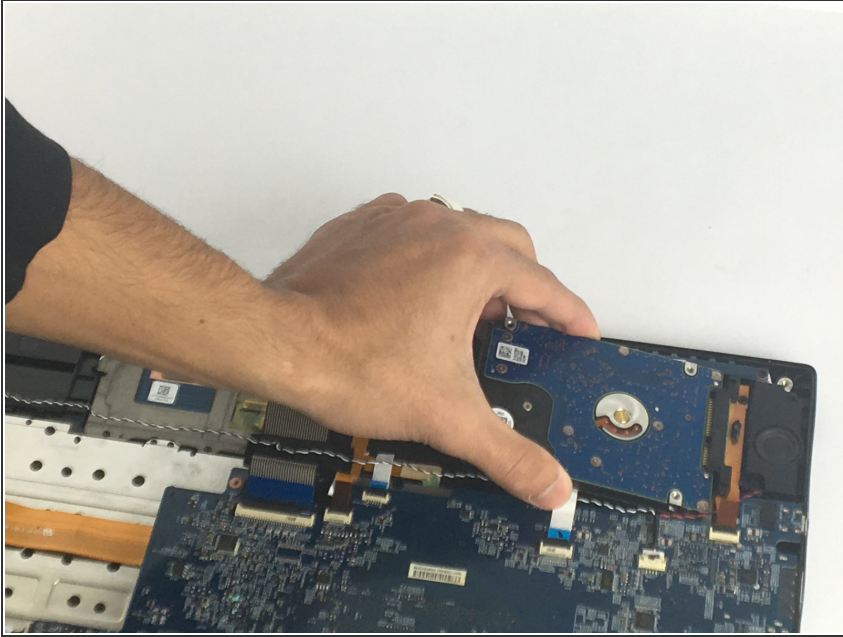
- Remove the eleven 5mm screws with a PH0 bit.
- Remove the four 2.5mm screws with a PH0 bit.
- Remove the bottom cover

Step 2



- Unplug the selected white wire located above the hard drive.
- ⚠ Unplug it gently by lifting it up to unlock the black cover that connects it to the motherboard. Do not break the black cover

Step 3



- Unplug the hard drive gently.

To reassemble your device, follow these instructions in reverse order.