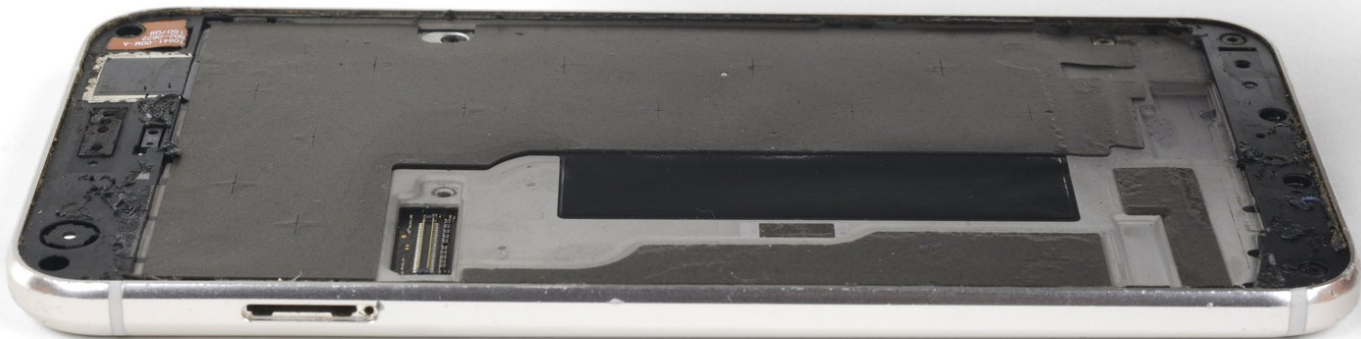




Google Pixel XL Display Assembly Replacement

This guide shows how to remove and replace Google Pixel XL's fragile display assembly, which includes the screen and digitizer.

Written By: Arthur Shi



INTRODUCTION

This repair guide was authored by the iFixit staff and hasn't been endorsed by Google. Learn more about our repair guides [here](#).

This guide shows how to remove and replace Google Pixel XL's display assembly, which includes the screen and digitizer.

The Pixel XL's unreinforced display panel is fragile and is attached to the frame with strong adhesive, making repairs difficult. There is a considerable chance of breaking the display, especially if it already has micro-fractures. Be sure to apply plenty of heat and be extremely careful during the prying stage.



TOOLS:

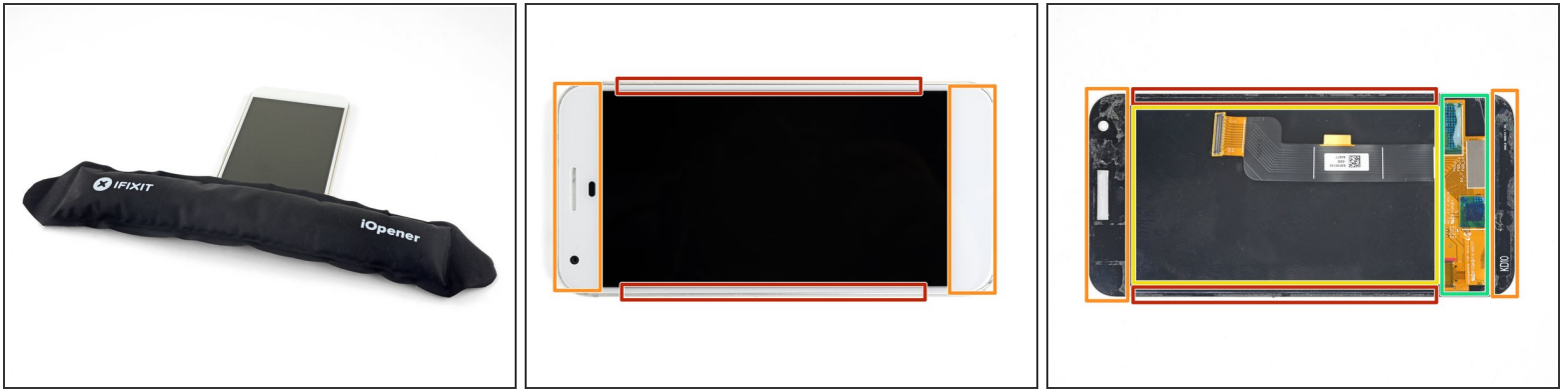
- [T5 Torx Screwdriver](#) (1)
- [iFixit Opening Tool](#) (1)
- [iOpener](#) (1)
- [Spudger](#) (1)
- [Suction Handle](#) (1)



PARTS:

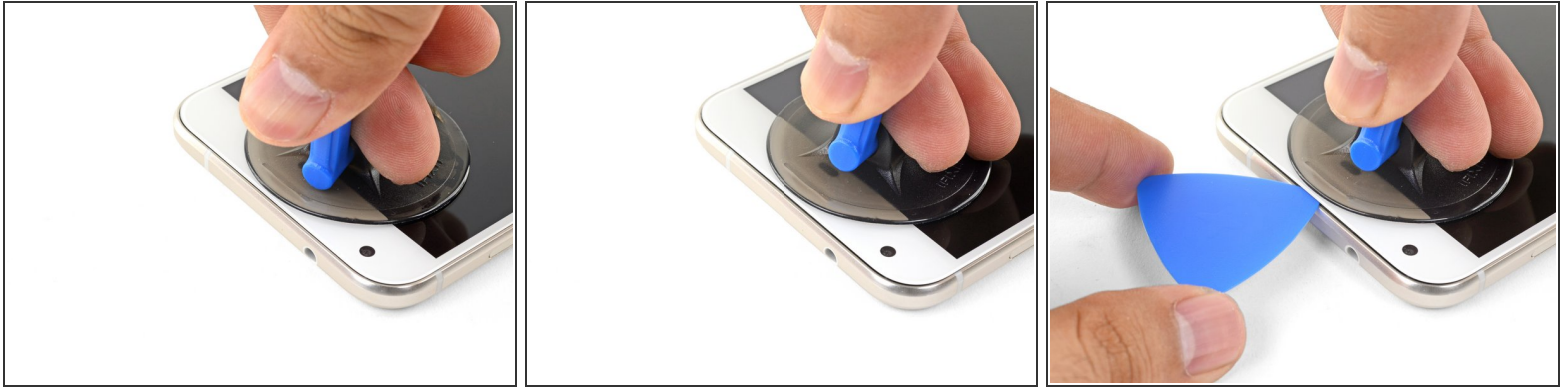
- [Google Pixel XL Screen](#) (1)
- [Google Pixel XL Display Adhesive](#) (1)
- [Google Pixel XL Earpiece Speaker Dust Mesh](#) (1)

Step 1 — Display Assembly



- [Heat an iOpener](#) and apply it to the **top edge** of the display for two minutes.
 - ⓘ A hair dryer, heat gun, or hot plate may also be used, but be careful not to overheat the phone—the display and internal battery are both susceptible to heat damage.
- Take note of the following regions before you begin prying:
 - Thin adhesive lined against the display panel
 - Thick adhesive
 - The OLED display panel, which is very prone to damage
 - The display cable, which can be damaged during prying

Step 2



- Once the edge is warm to the touch, apply a suction cup close to the edge.
- Lift on the suction cup, and insert an opening pick into the gap.

⚠ Do not insert the pick more than 13 mm (0.5 inches), or you will damage the display assembly.

- If you have trouble creating a gap, reheat the edge and try again.
- i** You can also try to use a playing card instead of an opening pick to help make the initial entry.

Step 3



- Slide the opening clip across the top edge to slice through the adhesive.

⚠ Be sure not to cut deeper than 13 mm (0.5 inches) or you will damage the display.

⚠ There's a mesh covering the earpiece speaker on the top edge of the screen. If you don't have a replacement mesh, take care not to damage or lose this component.

- Leave an opening pick in the edge to prevent the adhesive from resealing.

Step 4



- Heat an iOpener and apply it to the right edge of the phone for two minutes.
 - Insert an opening pick near the top edge of the phone, where you have already sliced the adhesive.
 - Slowly guide the pick around the right corner.
 - Carefully slide the pick down the right edge of the phone to slice through the adhesive.
- ⚠ Do not insert the pick more than 1 mm (1/32") along the edge, or you will damage the display assembly.**
- Repeat the step for the left edge of the phone.

Step 5



- Heat the bottom edge with an iOpener for two minutes.
- Insert a pick near the right edge where you have already loosened the adhesive.
- Carefully guide the pick around the corner.
- Slide the pick along the bottom edge to slice through the adhesive.

⚠ Do not slice deeper than 8.5 mm (1/3") or you will damage the display cable.

Step 6

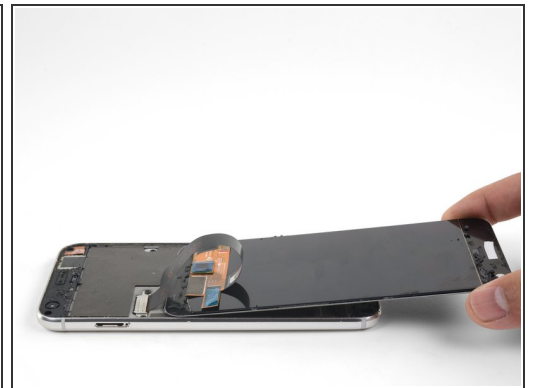
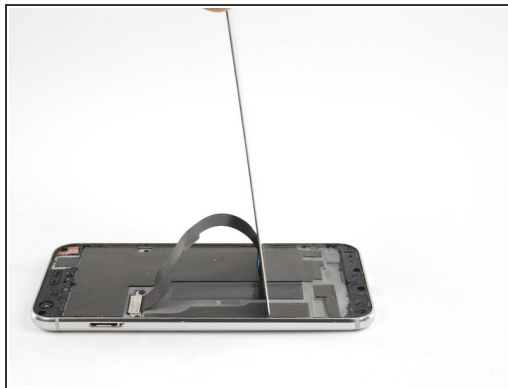


- Once you have sliced around the perimeter of the phone, carefully lift the display assembly up slightly by the right corners.

⚠ Do not attempt to remove the display assembly. It is still attached by a flex cable.

- Use an opening pick to slice through any remaining adhesive.

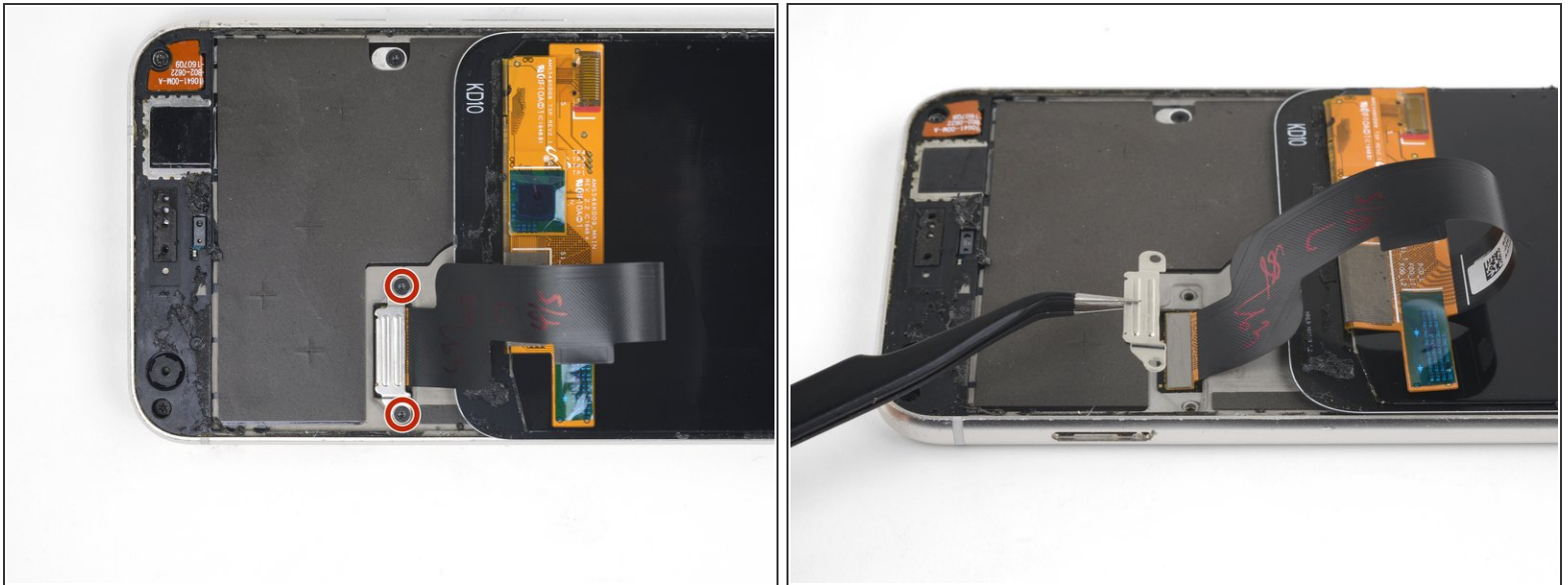
Step 7



- Lift the display assembly from the top end and swing it around such that it rests upside down on the frame.

⚠ Be careful not to strain the flex cable when you swing the assembly around.

Step 8



- Remove the two 4 mm T5 screws securing the display cable bracket.
- ⓘ Throughout this repair, [keep track of each screw](#) and make sure it goes back exactly where it came from.
- Remove the display cable bracket.

Step 9



- Use the point of a spudger to pry up and disconnect the display cable from its connector.
- ⓘ To re-attach [press connectors](#) like this one, carefully align and press down on one side until it clicks into place, then repeat on the other side. Do not press down on the middle. If the connector is misaligned, the pins can bend, causing permanent damage.

Step 10



- Remove the display assembly.

- ✦ **For comprehensive instructions on how to reinstall the Pixel XL display, [follow this guide](#).**
- ✦ If your replacement display did not come with a speaker grille, use tweezers to [gently peel the adhesive grille](#) from your old display, and transfer it to the replacement.
- ✦ Before installing a new display, be sure to remove all traces of adhesive from the frame. Use a spudger or an opening tool to scrape it off, and use high-concentration isopropyl alcohol to remove any residue.
- ✦ If you are reinstalling the same display assembly, be sure to remove all adhesive residue from the panel and the frame before applying new adhesive.
- ✦ Be sure to turn on your phone and test your repair before installing new adhesive and resealing the phone.
- ✦ During the boot-up process after reassembly, the screen will go through a calibration sequence. Do not touch the screen during this process, as it could result in improper touch calibration and create touch issues.

Compare your new replacement part to the original part. You may need to transfer remaining components or remove adhesive backings from the new part before installing.

If your Pixel won't turn on after replacing the screen, there is a chance that the phone has silently turned on when the battery is re-connected. Hold the power button for a few seconds until the phone vibrates off. Afterwards, re-connect the screen, and try again.

To reassemble your device, follow these instructions in reverse order.

Take your e-waste to an [R2 or e-Stewards certified recycler](#).

Repair didn't go as planned? Check out our [Google Pixel XL Answers community](#) for troubleshooting help.