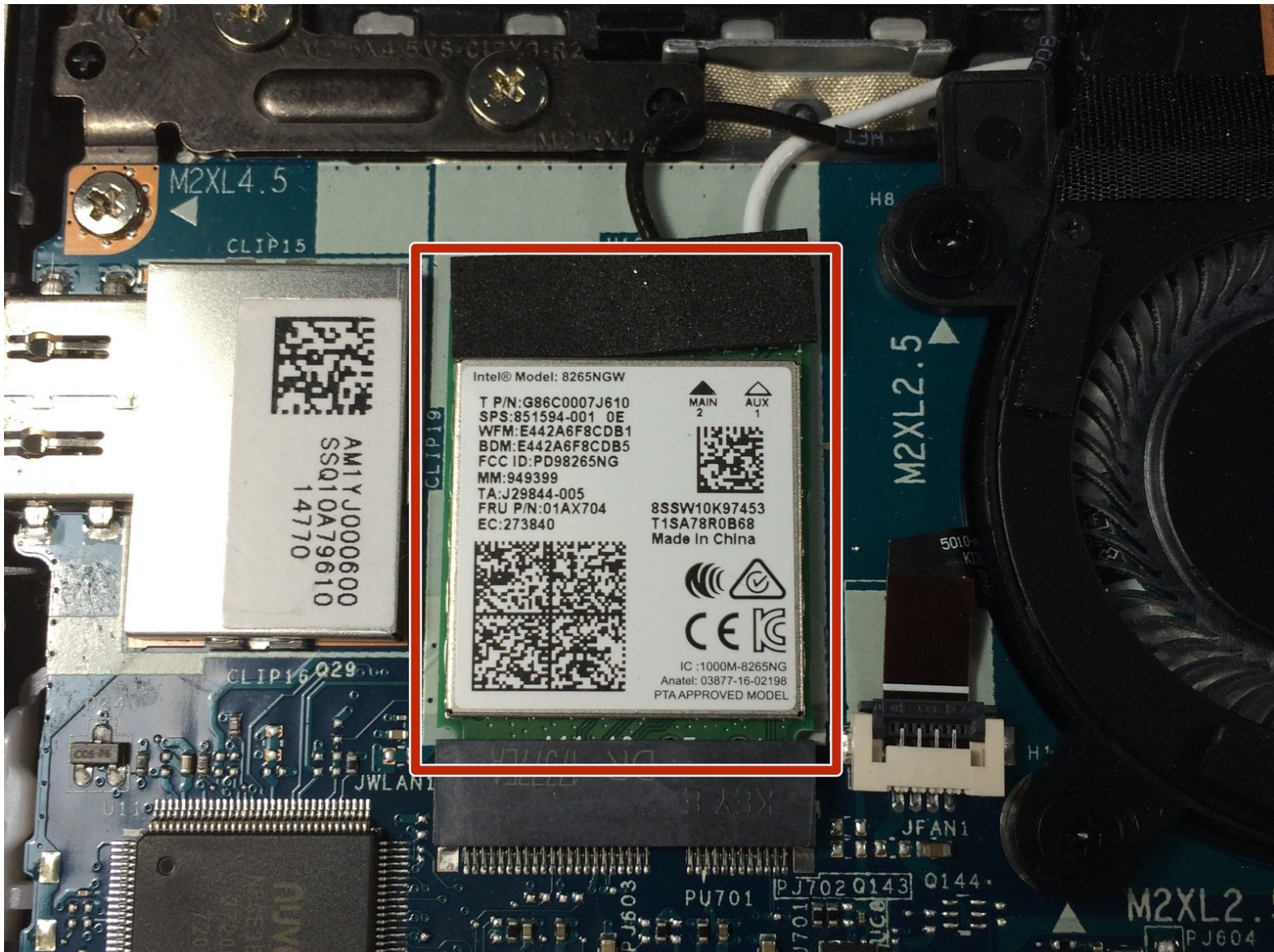




# Lenovo Yoga 720 Wireless Adapter Replacement

This guide will show how to replace the wireless adapter.

Written By: Aiden Baker



# INTRODUCTION

This guide will show you how to replace the wireless adapter.





## TOOLS:

- [T5 Torx Screwdriver](#) (1)
  - [iFixit Opening Tools](#) (1)
  - [JIS #1](#) (1)
  - [Tweezers](#) (1)
  - [Spudger](#) (1)
-



## Step 1 — Bottom Cover



-  Before you begin, be sure to turn off your laptop and discharge the battery down to 25%.
-  Start by flipping the device over so that you see the screws.
  - Remove seven Torx T5 short screws.
  - Remove three Torx T5 long screws.

## Step 2



- Starting from the USB port, use your opening tool to gently pry up the case.
-  Make sure you are prying on the cover itself, not the metal shield around the USB port.
- Pry along the laptop in the order shown by the arrows.
-  Do NOT pry along the top side, or you risk damaging the casing. Stay with the arrows.

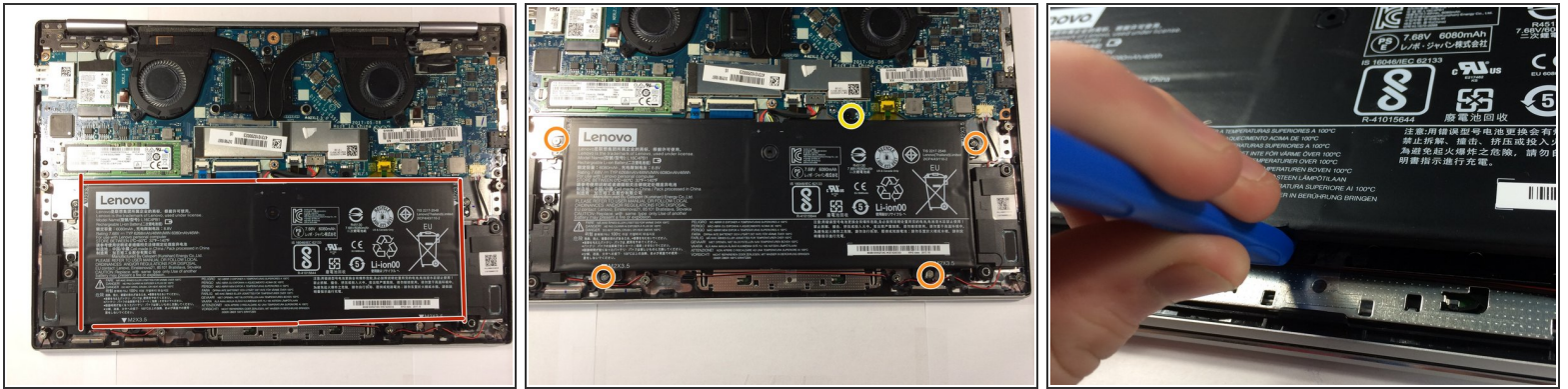


## Step 3



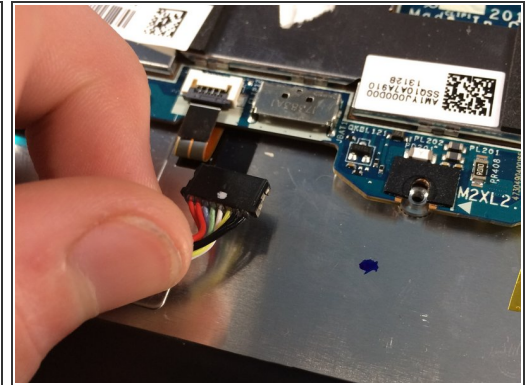
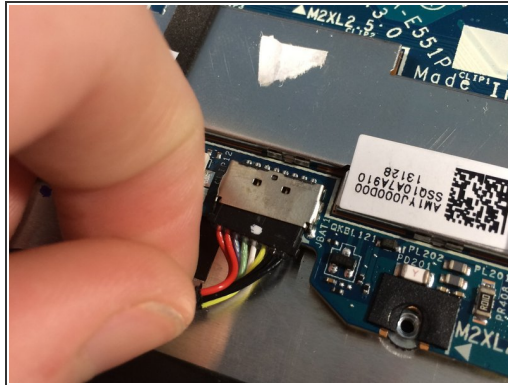
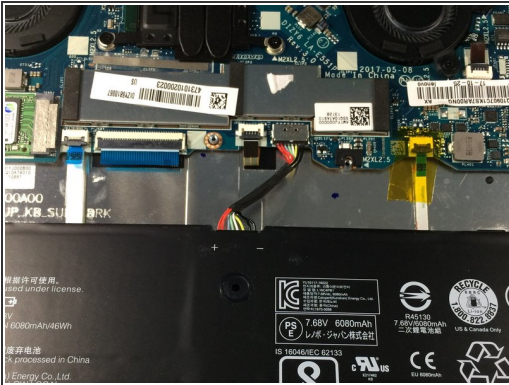
- Lift the case from the bottom side. NOT the side with the hinges.  
⚠ When you feel resistance, do NOT keep lifting or you will damage the housing.
- Once you feel resistance, gently pull the case towards you. (away from the hinges.)
- Remove the case.

## Step 4 — Battery



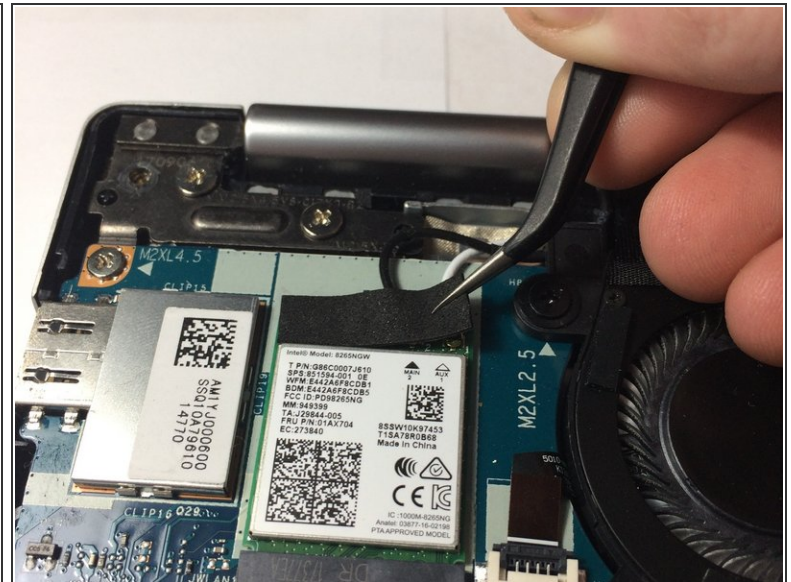
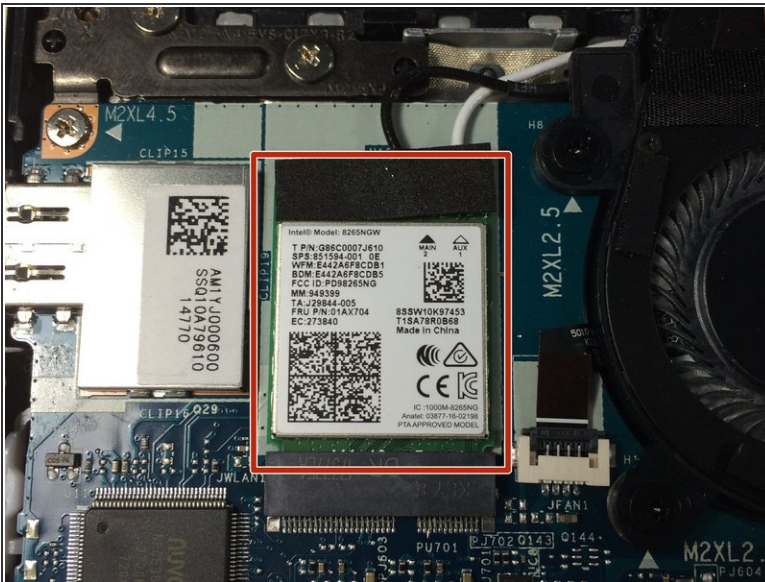
- This is the battery. For guides that are for other parts, the battery is removed for the reason of it being a pain to connect or disconnect while screwed in.
- ⚠ Be careful not to short anything on the motherboard, as the battery cannot be disconnected before removal.
- Remove four [J1 Philips screws](#).
- Remove one J1 philips screw.
- ⓘ Do not mix these screws up. If you put the longer screw where the shorter screw belongs, you will damage the shield around the keyboard.
- Lift the battery slightly using your plastic opening tool.
- ⚠ Do not lift the battery out all the way, as it is still connected to the motherboard.
- ⚠ Do NOT puncture or deform the battery or it may catch fire or even explode.

## Step 5



- Pull the battery towards you until the wire is accessible.
- gently tug and wiggle on the wire until it pops out.
- Remove the battery.

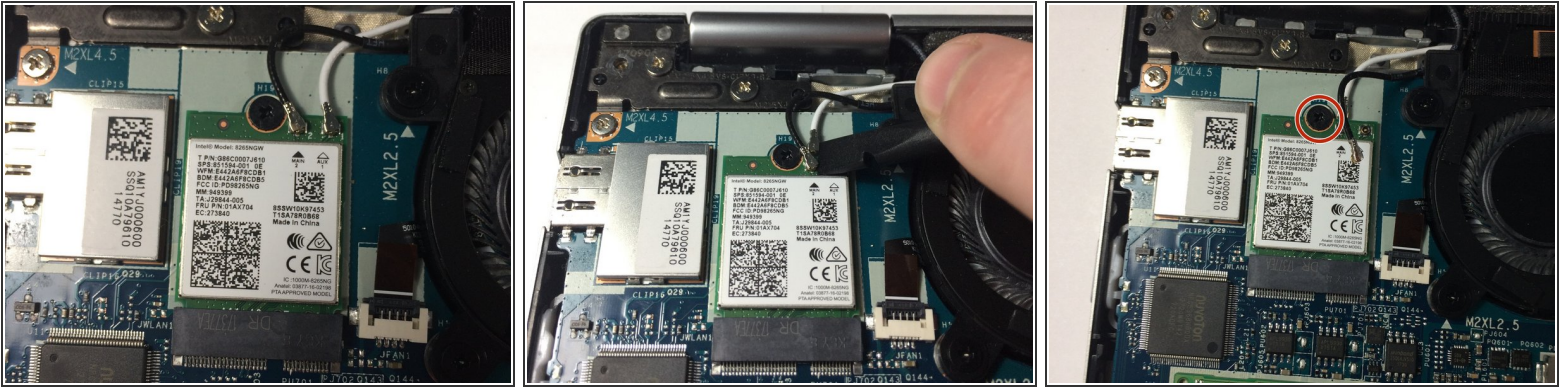
## Step 6 — Wireless Adapter



- This is the wireless adapter.
- Using tweezers, remove the fuzzy tape.

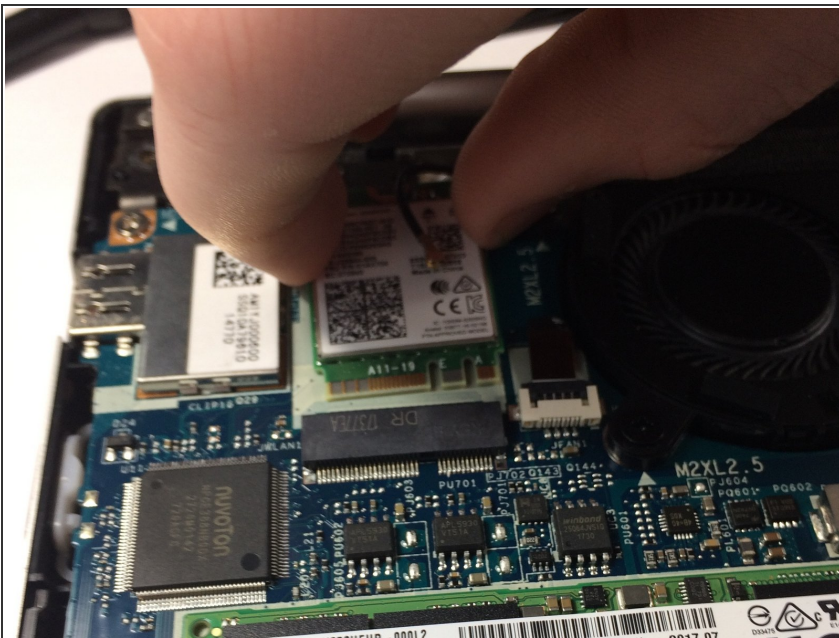


## Step 7



- Remove the white and black antenna cables using a spudger.
- ① Move any cables in the way out of the way.
- Remove one JIS1 screw holding the wireless card in place.

## Step 8



- Gently pull out the wireless card.

To reassemble your device, follow these instructions in reverse order.