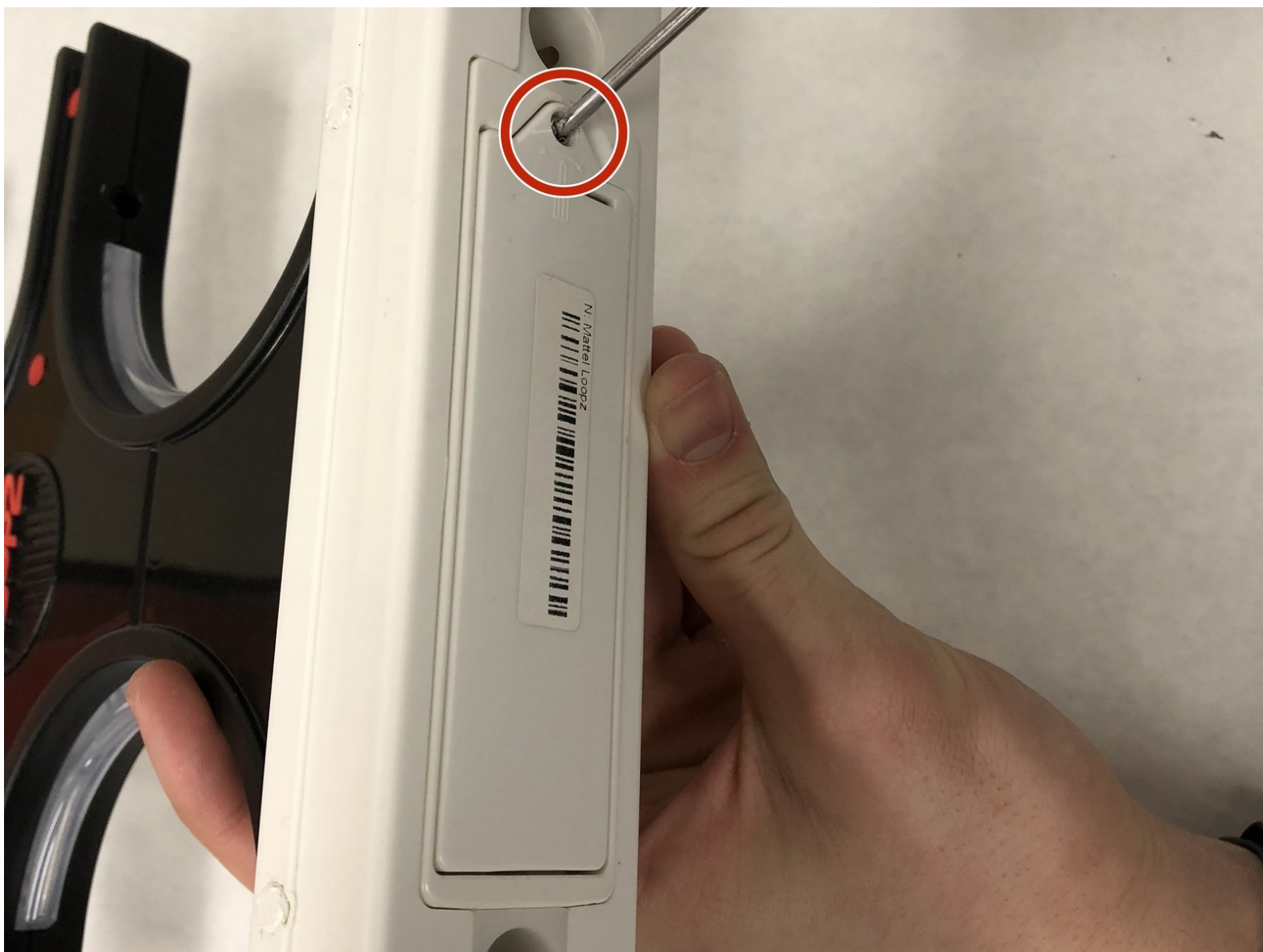




Mattel Loopz Batteries Replacement

This guide will show how to replace the AA batteries on a Mattel Loopz.

Written By: Jake Tragesser



INTRODUCTION

The Mattel Loopz uses AA batteries for power. To replace these batteries a Phillips head screwdriver is required.



TOOLS:

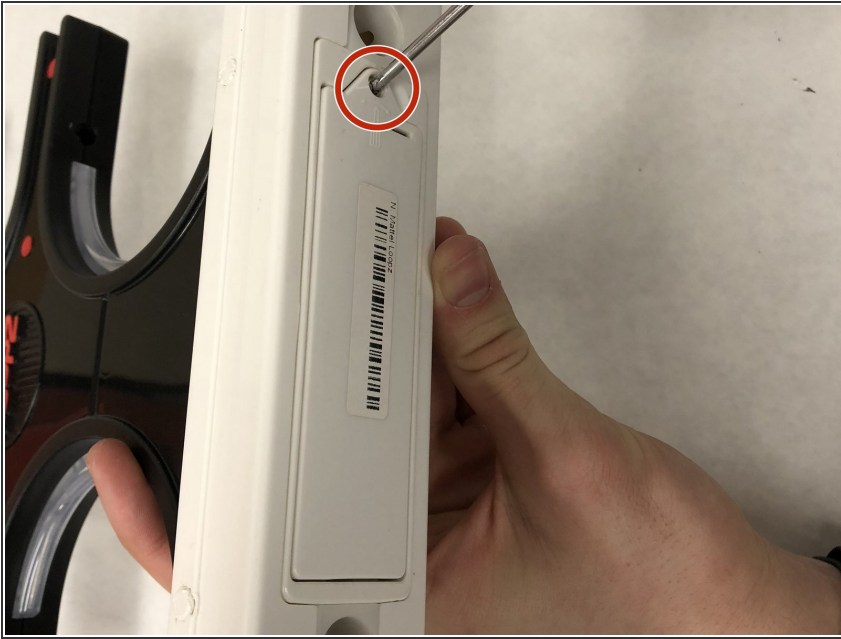
- [Phillips #2 Screwdriver](#) (1)



PARTS:

- [AA Batteries](#) (4)

Step 1 — Batteries



- Use a No. 2 Phillips head screwdriver to take out the 1/4" screw that holds the battery cover in place on the bottom of the device.

Step 2



- Take out the 4 AA Batteries.

To reassemble your device, follow these instructions in reverse order.