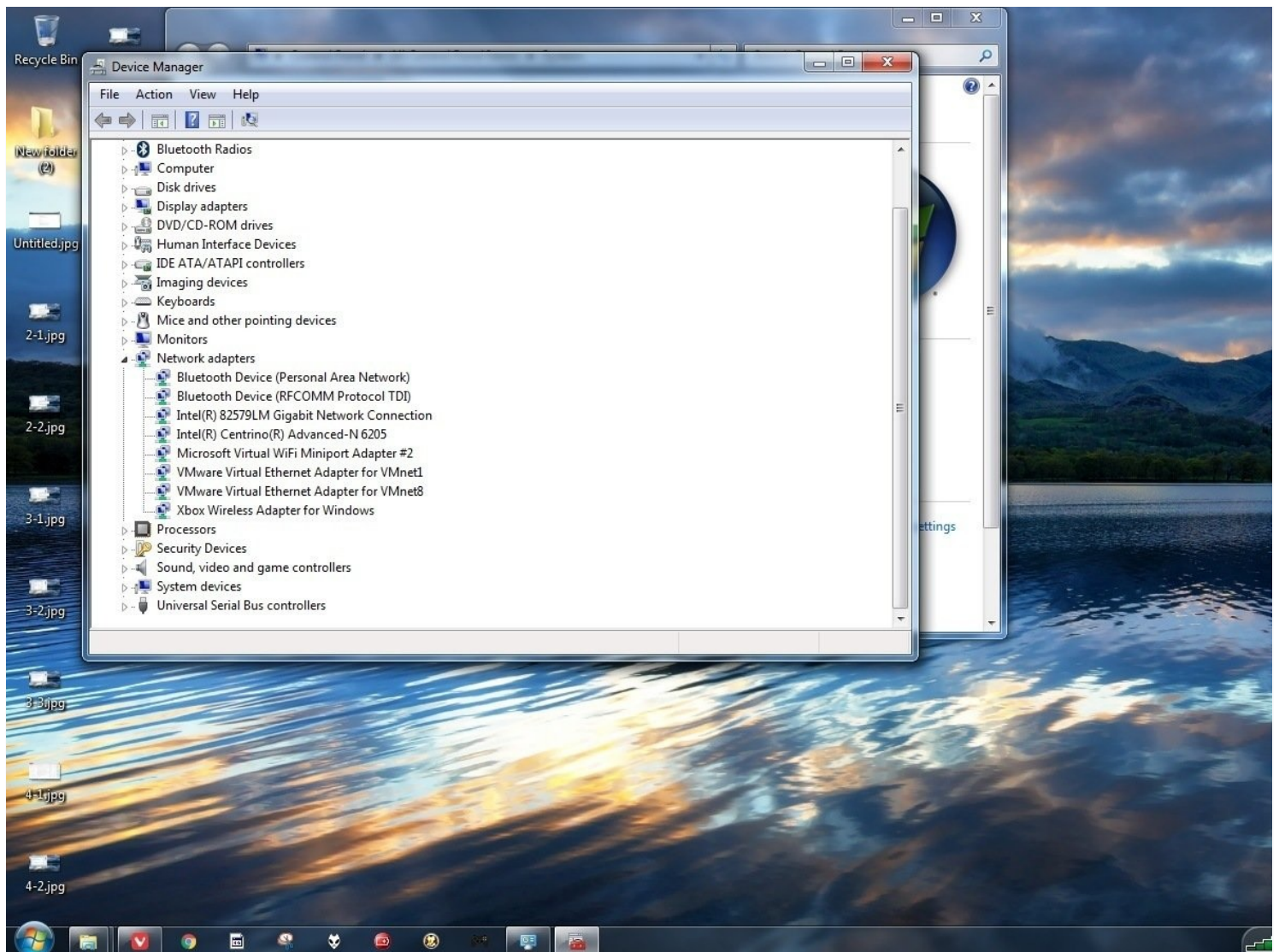




# OBSOLETE - How to install the Xbox One Wireless Receiver 1713 (Windows 7/8.1)

IMPORTANT: AS OF 1/1/2023, THIS GUIDE IS...

Written By: Nick



# INTRODUCTION

**IMPORTANT: AS OF 1/1/2023, THIS GUIDE IS OBSOLETE AND WILL NO LONGER BE SUPPORTED, UPDATED OR MAINTAINED BY THE AUTHOR. ALL OPERATING SYSTEMS COVERED ARE END-OF-LIFE AND NO LONGER UPDATED BY MICROSOFT. RATHER THAN HOPING FOR THE BEST, I AM NO LONGER GOING TO SUPPORT THIS GUIDE AS I CANNOT GUARANTEE FIXES OR DRIVER AVAILABILITY FROM MICROSOFT MOVING FORWARD. HOWEVER, I DID ARCHIVE THE DRIVER FILES AND WILL KEEP THIS GUIDE AVAILABLE INDEFINITELY. I ARCHIVED THE DRIVER FILES AS INSURANCE IN THE EVENT THEY GET PULLED AS THEY MAY NOT BE MAINTAINED DUE TO THE END-OF-LIFE OS STATUS. While this guide is officially unsupported by the author and is being kept up on an "as-is" basis, this method remains valid for these legacy systems.**

**BEWARE: In the event of a major issue, I may have to pull this guide down permanently at any time due to the nature of software guides!**

If you purchased an Xbox Wireless Receiver for Windows and are wondering how to use it on Windows 7 or 8.x, this guide will show you how to install the drivers. Since Microsoft is aggressively pushing Windows 10 (despite most choosing to wait), problems have begun to show up with the process of pushing reluctant Windows 7 or 8.x users to upgrade. This guide will show you how to manually install the driver and get it working on these older systems.

**IMPORTANT: While my screenshots show Windows 7, Microsoft no longer supports it as of 1/14/2020. Since the steps are still essentially the same, I chose to keep using the existing photos.**

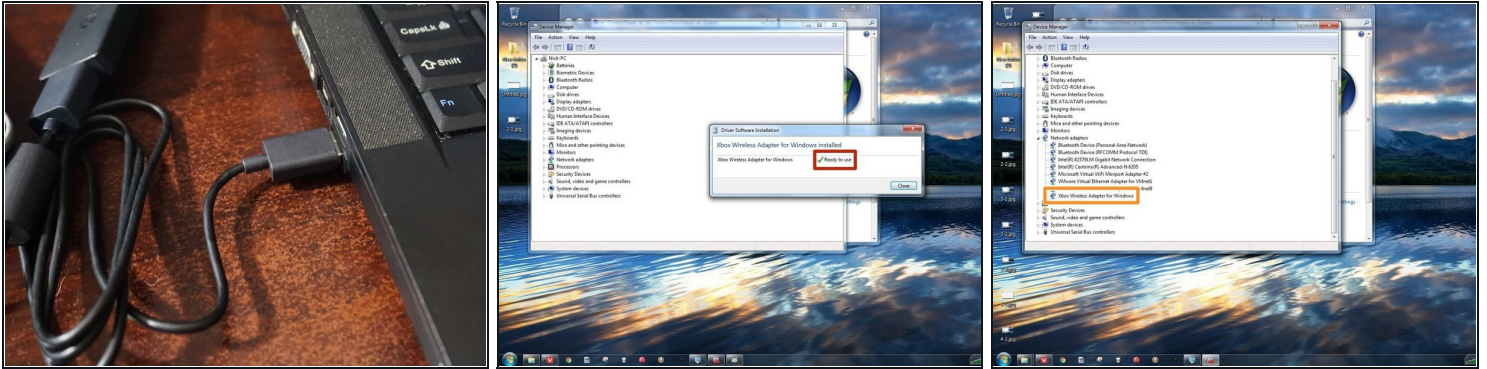
## IMPORTANT WINDOWS EOL NOTICES:

- **PASSED (1/14/2020): Windows 7 end of life; GUIDE NO LONGER SUPPORTED FOR WINDOWS 7 USERS. However, this procedure remains valid as it still works.**
- **PASSED (12/14/2021): No more in-guide support for Windows 8.1; critical guide issues fixed as time permits.**
- **PASSED (1/1/2023): Windows 8.1 end-of-life early cutoff. GUIDE IS NO LONGER SUPPORTED AND CONSIDERED OBSOLETE. While Microsoft considers Windows 8.1 EOL in 1/10/2023 I am choosing to cut support early to simplify the EOL process.**

## Guide notes

- In most cases, the receiver picks up the driver automatically but may need encouragement. ***Follow the manual steps in the event it does not automatically install.***
- ***Windows 10 users: This guide is specific to Windows 7 and 8.x. Windows 10/11 require different drivers. Refer to the [Windows 10/11 guide](#).***

## Step 1 — Plug and play installation

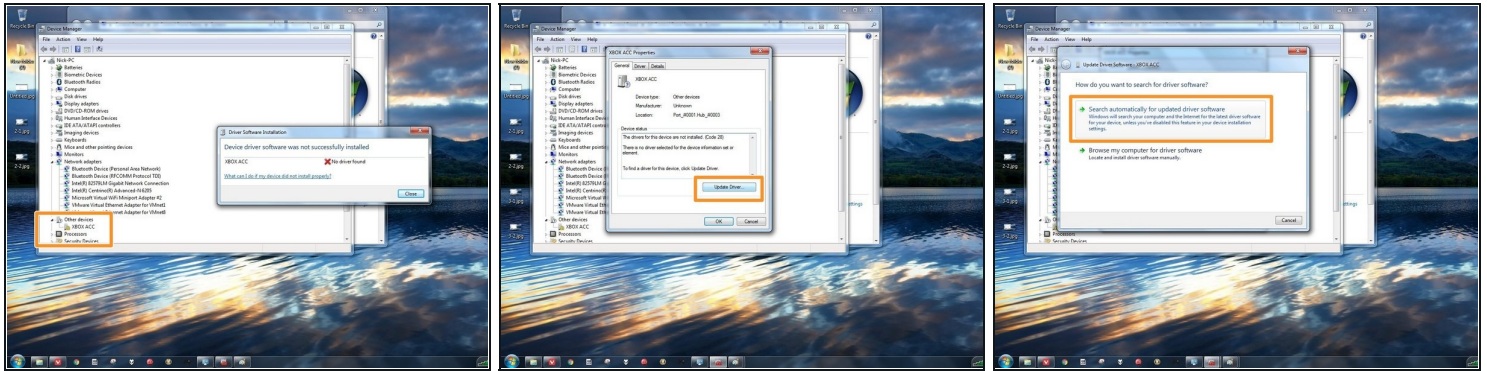


***⚠ Try this method first. Microsoft pulled the download from the public Microsoft Update catalog.***

***★ Before opening Device Manager, see if the driver installed correctly (it will say "Ready to use"). If it does not say this, open Device Manager to confirm.***

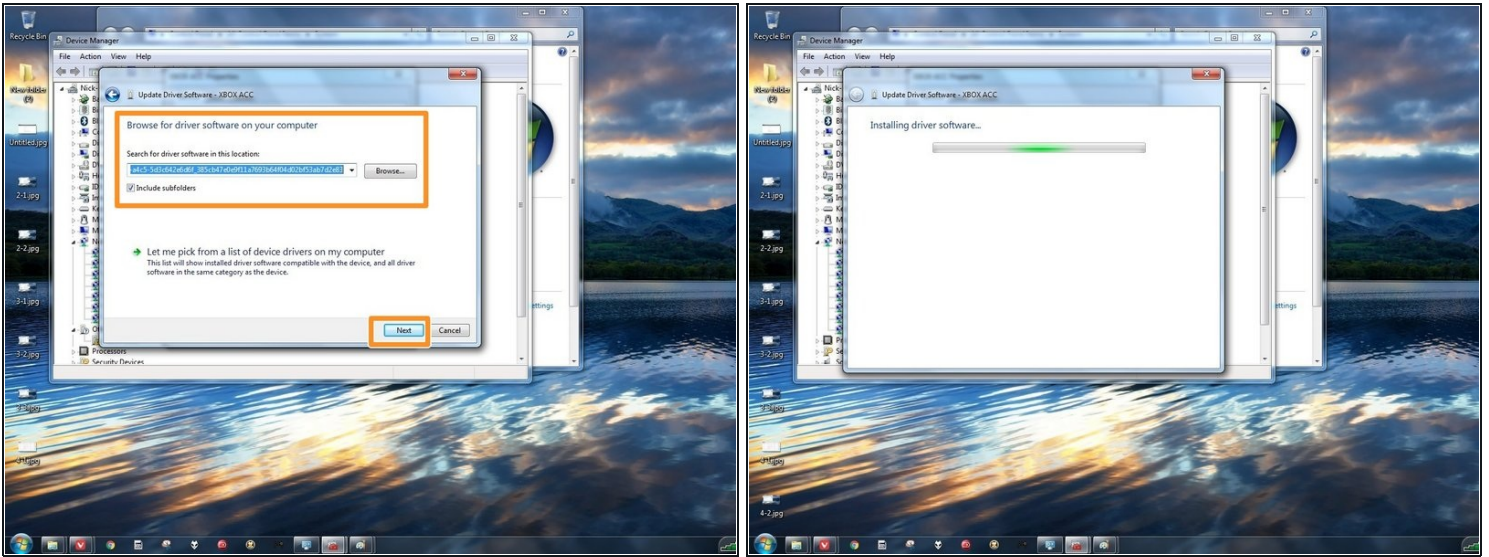
- Plug the Xbox Wireless Receiver into your PC. ***Before using the manual option, confirm the automatic installation worked.***
- ***Windows 7:*** Open the start menu and right click ***Computer***. Select ***Manage*** and locate Device Manager.
- ***Windows 8.x:*** Right click the Windows logo in the taskbar. Select ***Device Manager***.

## Step 2 — Driver installation (Automatic search, Device Manager)



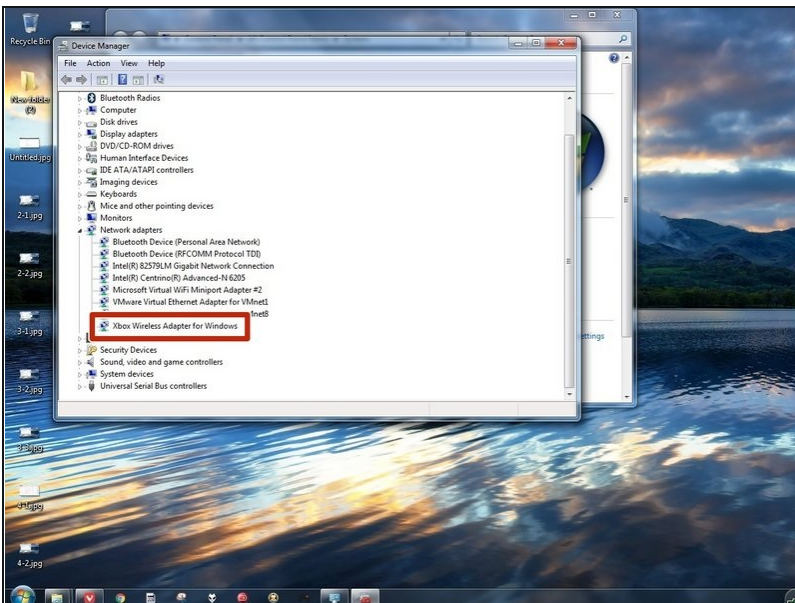
- Open Device Manager and ***follow the steps specific to your version of Windows.***
- **Windows 7:** Open the start menu and right click **Computer**. Select **Manage** and locate Device Manager.
- **Windows 8.x:** Right click the Windows logo in the taskbar. Select **Device Manager**.
- Double click **XBOX ACC** and verify the error shown is **Code 28**. Click **Update Driver**, then **Search automatically for updated driver software**.

### Step 3 — Driver installation (Manual installation, Device Manager)



- If the automatic driver install fails, download the [appropriate .cab installation file \(32/64-bit archive\)](#).
- Select ***Browse my computer for driver software***.
- Locate the folder where the driver is downloaded and select ***Copy address as text***. Paste the location into the box under ***Search for drivers in this location: Click Next***.

## Step 4 — Driver installation (Verification)



- If you get an [error](#) on Windows 7, install the [User-Mode and Kernel-Mode Driver Framework Driver \(Version 1.11\)](#) update. [Update archive, Google Drive.](#)
- To verify the driver was installed correctly, check under **Network Adapters**. This is where the adapter appears if installed correctly.

