



# iFixit Side Stack Retail Display Assembly

Written By: Eric Essen



## Step 1 — Empty Box Components



- Box should include:
  - Set of screws/driver
  - Metal rods
  - Honeycomb Base/Feet
  - Main stand (back/sides)
  - Two large, one small foldable shelf insert
  - Two large, one small black rectangular insert
- "You can fix it" panel and iFixit topper (not pictured)

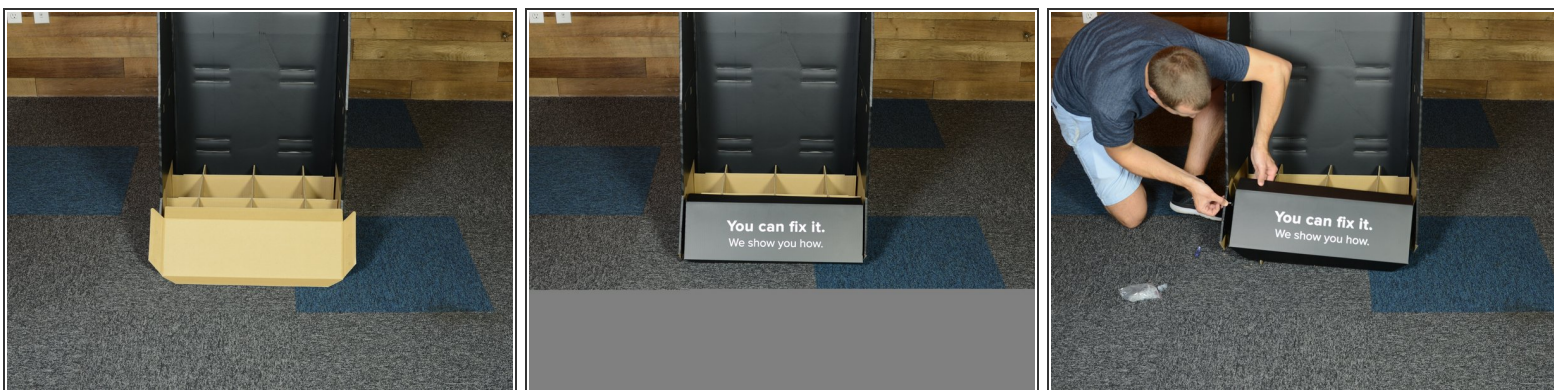
## Step 2 — Build Honeycomb Base



- The three angled supports fit into the two rectangular supports.
- Place the fully constructed honeycomb base into the display.



### Step 3 — "You can fix it"



- Fit "You can fix it" panel over front of honeycomb base
  - "You can fix it" panel sides fit INSIDE of base walls
  - Use screws to fasten

### Step 4 — Build Shelf Insert



- Build bottom shelf, using one of two larger foldable shelves
  - Tabs fit together, fit side tabs along back, then fold over and secure

## Step 5 — Install Metal Supports



- Install two metal support for middle shelf
- Metal rods fit into provided holes

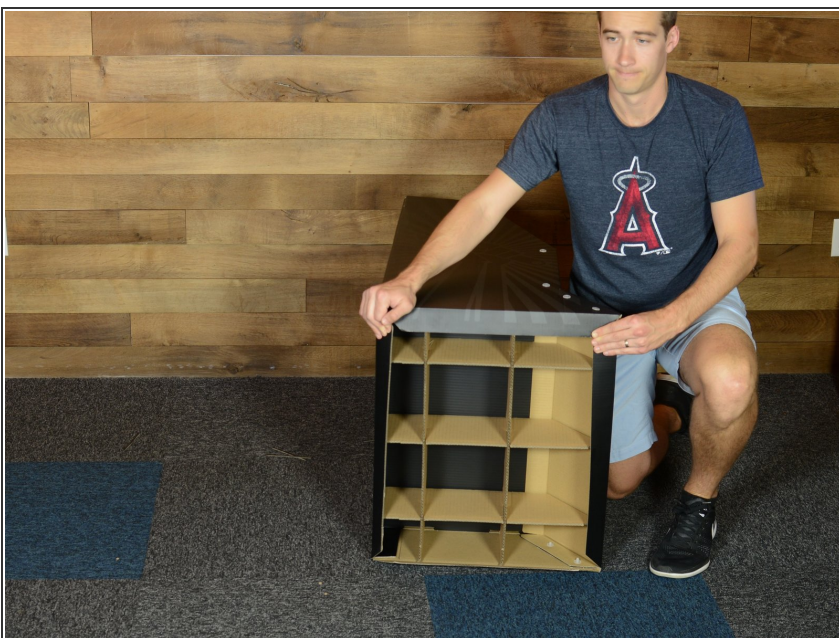


## Step 6 — Insert Bottom Shelf



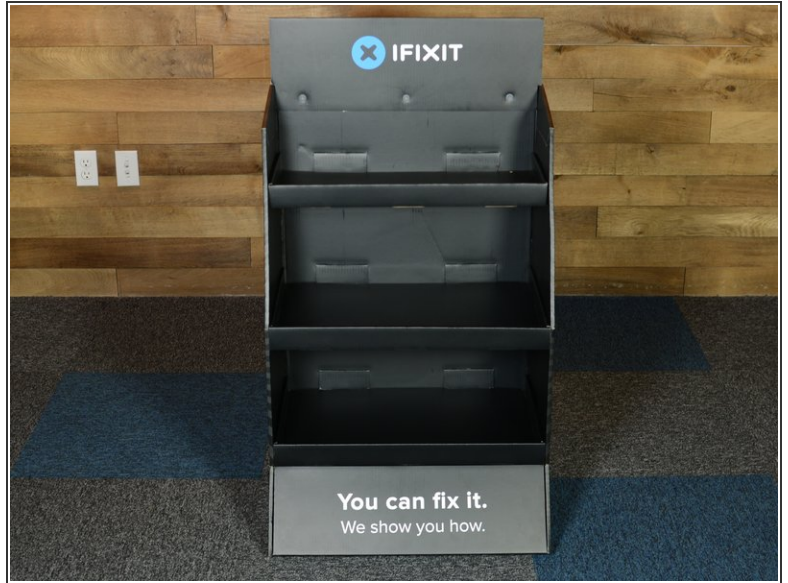
- Fit bottom shelf into bottom shelf slots cut into back of display
  - Tabs go out the back and then back in towards the front
- Lay black shelf insert into shelf
- Fit screws together to hold shelf in place
- Repeat for middle and top shelves
  - Top shelf and insert are smaller than bottom and middle shelves

## Step 7 — Fold Sides into Honeycomb Base



- Like so.
- (Go Angels!)

## Step 8 — iFixit Header Sign



- Fold top section down to make holes match
- Align iFixit sign and install using screws

To reassemble your device, follow these instructions in reverse order.