



Motorola Moto Z2 Play Battery Replacement

Use this guide to remove and replace a dead or...

Written By: mitch miller



INTRODUCTION

Use this guide to remove and replace a dead or low battery in a Motorola Moto Z2 Play. If your battery is swollen, [take appropriate precautions](#).

Before you begin, download the [Rescue and Smart Assistant](#) app to backup your device and diagnose whether your problem is software or hardware related.

Warning: Because of the strong adhesive securing the display, minimal clearance for inserting your tools, and high heat required, there's a good chance of accidentally damaging the display when removing it. If you intend to re-use the display, take serious care when heating and inserting tools to separate the display from the rest of the device.

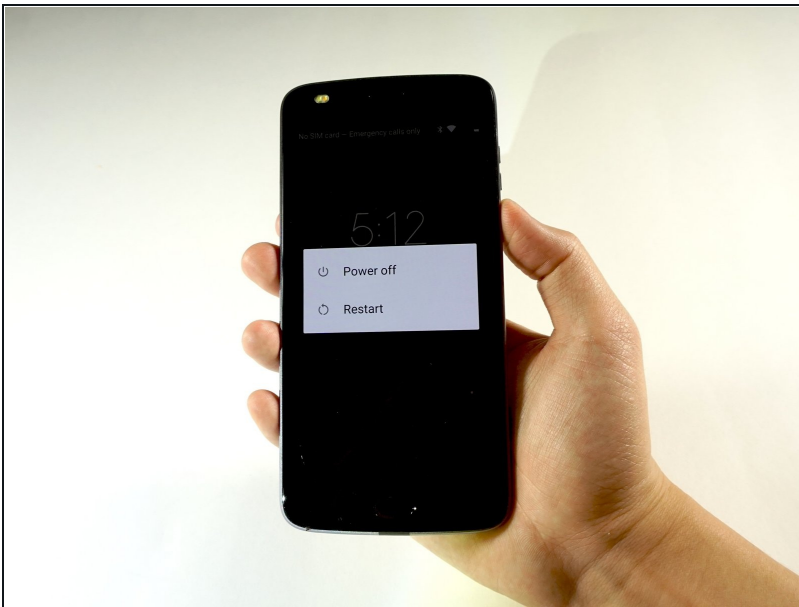
TOOLS:

[Tweezers](#) (1)
[Plastic Cards](#) (1)
[SIM Card Eject Tool](#) (1)
[Suction Handle](#) (1)
[iFixit Opening Tool](#) (1)
[iOpener](#) (1)

PARTS:

[Moto Z2 Play Battery - Genuine](#) (1)
[Moto Z2 Play Display Adhesive](#) (1)

Step 1 — Screen Removal



- Power off your phone before you complete any replacement steps.

Step 2



- Heat the edges of your Motorola Moto Z2 Play screen for two to three minutes with a heat gun. You adjust the heat gun to 85 degrees centigrade, and be careful not to hold the heat gun on one position for too long; to avoid damaging, or "hotspotting" the LCD. The screen should be very warm, but not painful, to the touch. Reheat as necessary.

⚠ If screen is cracked put strong adhesive tape across the screen in order to avoid breaking the screen further and receiving cuts.

ⓘ If you don't have access to a heat gun, a hair dryer can be used.

Step 3



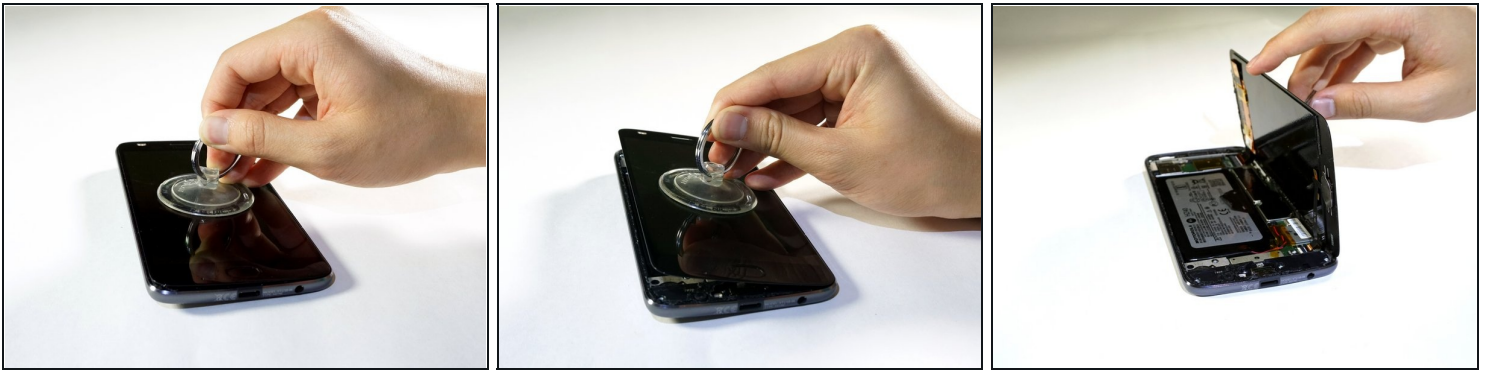
- Place suction cup in the middle of the screen and press down.

Step 4



- Pry the screen by wedging the plastic opening tool under the screen at the charging port.
- Work your way around the screen with the plastic opening tool.
 - ⚠ When you pry near the top-right and bottom-right corners, be careful not to pry too far, or you risk damaging [the display cable](#).
- ① Complete these steps carefully because the screen is delicate and can easily crack. If the screen begins to resist prying, reheat the adhesive with your heat gun.

Step 5



- Use a suction cup to lift up screen from left to right.
- ⓘ If you don't have a suction cup, wedge a spudger or a small [plastic card](#) under the screen and lift slowly.
- ⓘ Failure to lift screen from left to right can cause damage to interior wires of your phone.

Step 6



- Identify ribbon connector at the top right of the phone.
- Pry the black locking bar up gently with a plastic opening tool.
- Remove the ribbon wires by pulling them out of the connector with a tweezer.
- ⓘ The locking bar is the small black bar located on the digitizer's ZIF connector.
- ★ Be sure to push the locking bar back down using a spudger after you put the ribbon wire back in since the lock does not lock automatically.

Step 7



- Identify the ribbon cable, located at the bottom right of the phone.
 - If present, remove kapton (orange) tape covering the cable connector.
 - Flip up the small locking flap on the ZIF connector and use tweezers to slide the cable straight out of its socket.
- ⓘ Excessive force is not needed.

Step 8



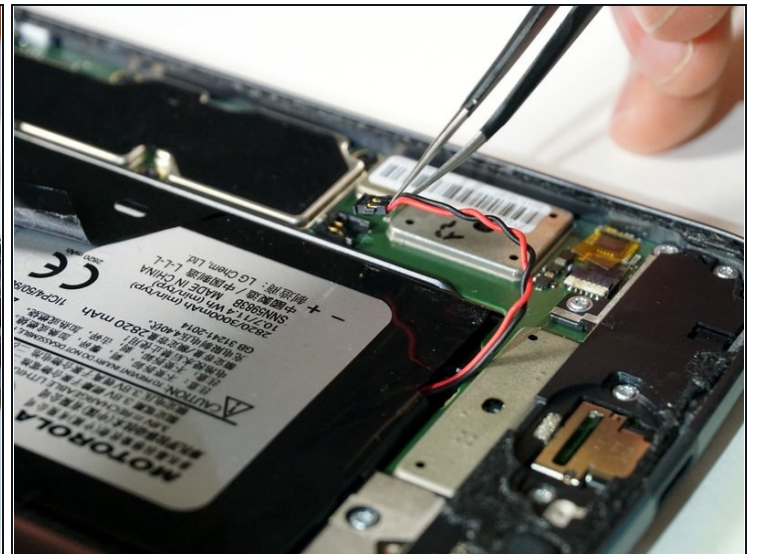
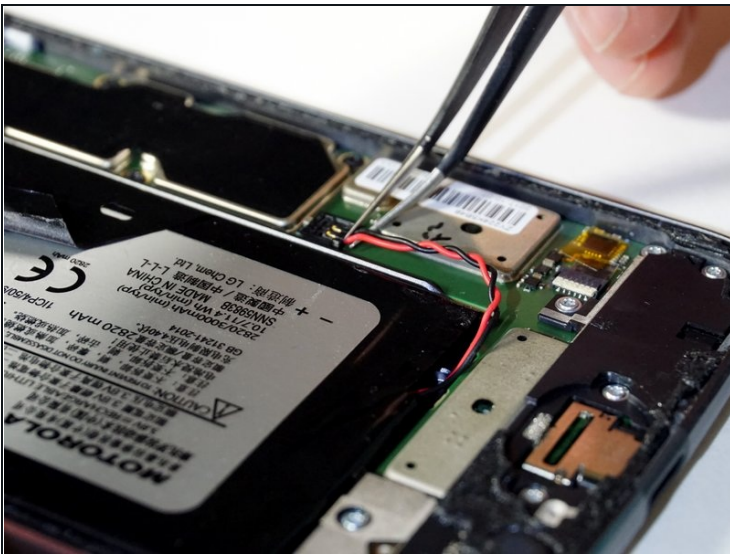
- Lift the screen from the phone to completely detach.
- ⓘ If screen doesn't detach, go back to step 7 and 8 to make sure the bar is unlocked and ribbon connector is fully detached.
- ☑ During reassembly, you may need to apply or replace the display adhesive on your display assembly. Use our [display adhesive application guide](#) to apply the adhesive and reseal your device.

Step 9 — Battery



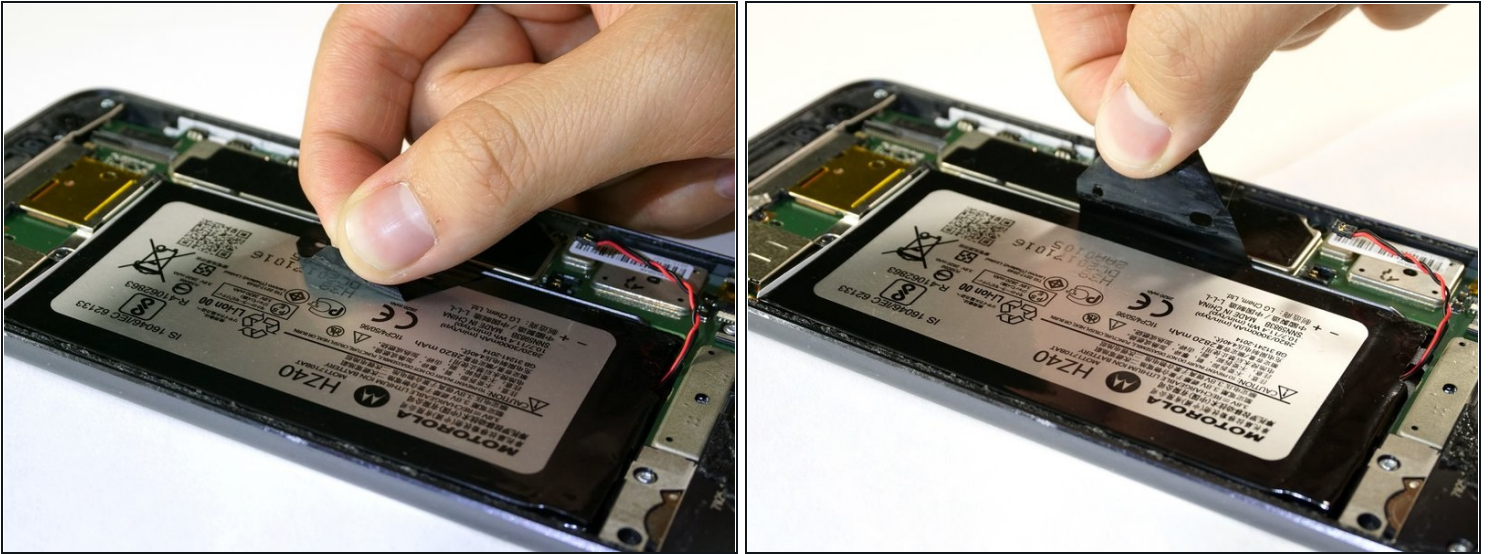
- Remove the orange tape, located at the bottom right of the phone, using tweezers.
- ❗ Do not discard tape.

Step 10



- Detach the red and black battery wire by lifting up with tweezers.

Step 11



- Peel back the black tape that is located on the battery.
- ① Make sure you pull back gently so you can reuse the tape with reassembly.

Step 12



- Lift the black tape and slide a card under the battery.
- Align the card parallel and under the battery.
- Wedge the card further under the battery.
- Lift the card up to assist in removing the battery from the adhesive.

Step 13



- Lift to remove the battery from the device completely.

To reassemble your device, follow these instructions in reverse order.

After completing this guide, [calibrate your newly-installed battery](#).