



iMac Intel 21.5" EMC 3068 Power Supply Replacement

Use this guide to replace the power supply in...

Written By: Adam O'Camb



INTRODUCTION

Use this guide to replace the power supply in your iMac Intel 21.5" EMC 3068.

Some images in this guide use a 2015 iMac, which has minor visual differences. These differences do not affect the repair procedure.

This guide is marked "potentially dangerous" because it requires you to handle a power supply that contains large capacitors. Unplug the iMac and hold the power button down for at least 10 seconds to help discharge the capacitors. Handle the board by the edges and do not touch surface components.



TOOLS:

[Plastic Cards](#) (1)
[iMac Opening Wheel](#) (1)
[Tweezers](#) (1)
[Phillips #00 Screwdriver](#) (1)
[TR10 Torx Security Screwdriver](#) (1)
[iMac Service Wedge](#) (1)
[Spudger](#) (1)



PARTS:

[iMac Intel 21.5" \(Late 2012-2019\) Power Supply](#) (1)
[iMac Intel 21.5" \(2012-2019\) Adhesive Strips](#) (1)

Step 1 — Display Assembly



- ① With the hinge free to move, the iMac will be unbalanced and hard to work on. Repairs are fast and easy with an iMac service wedge, but can be completed without one.
- ① If you are using the [iFixit cardboard service wedge](#), follow [these assembly directions](#) to put it together.
- **Before beginning any work on your iMac:** Unplug the computer and press and hold the power button for ten seconds to discharge the power supply's capacitors.
- ⚠ **Be very careful** not to touch the capacitor leads or any exposed solder joints on the back of the power supply. Only handle the board by the edges.

Step 2



- Starting on the left of the display, near the power button, insert the iMac Opening Tool into the gap between the glass panel and the rear enclosure.

⚠ The hub on the iMac Opening Tool will keep you from pushing the wheel in too far. If using a different tool, insert no more than 3/8" into the display. Otherwise, you risk severing antenna cables and causing serious damage.

Step 3



- Use the tool like a pizza cutter—roll it along through the gap, and it will cut the foam adhesive through the center.
- ⓘ Be sure to always push with the handle behind the cutting wheel. If you pull, the wheel might get pulled out of the handle.
- Run the tool up along the left side of the display.

Step 4



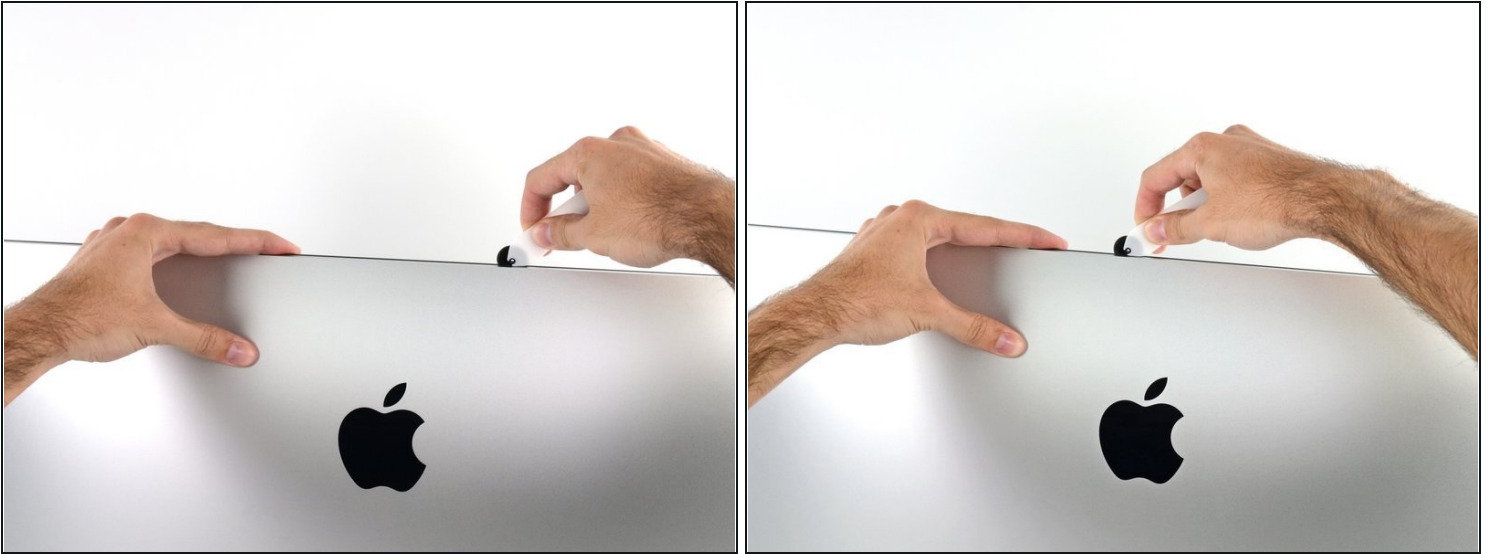
- Continue running the tool up around the top left corner.

Step 5



- Cut the adhesive along the top left of the display.

Step 6



- Continue along the top of the display.
- ① You may want to run the tool back and forth through what you've already cut a few times, to ensure you get as much of the adhesive separated as possible.

Step 7



- Push the tool around the top right corner of the display.

Step 8



- Wheel the tool down along the right side of the display.

Step 9



- Finish pushing the opening tool to the bottom of the right side of the display.
- ① At this point, you'll want to run the tool back around the entire display, to ensure you cut as much adhesive as possible.

Step 10



ⓘ While the opening tool cut most of the adhesive, the display will still be slightly adhered to the case. A plastic card will be necessary to free up the last of this adhesive.

☑ Set the iMac face-up on a table.

- Starting from the top right corner of the iMac, wedge a [plastic card](#) between the display and frame.

⚠ Be careful **not** to insert the plastic card more than 3/8", or you may damage internal components.

Step 11



- Gently twist the plastic card sideways to create a gap between the display and frame.
- Move slowly and be careful not to stress the display glass too much—you only need to make a gap of about 1/4".

Step 12



- Slide the card toward the center of the display to cut any of the remaining adhesive along the top right corner of the iMac.

⚠ Be sure to **stop** before the iSight camera, or you may damage it.

Step 13



- Wedge the plastic card into the top right corner once again, and leave it there to prevent the adhesive from resticking.

Step 14



- Insert a second plastic card into the gap between the display and frame near the top left corner of the iMac.

Step 15



- Gently twist the card upward, slightly increasing the space between the display and frame.
- ① As with the other side, twist slowly to allow the adhesive time to separate, and be careful not to over-stress the display glass.

Step 16



- Slide the plastic card toward the center, again stopping just before the iSight camera.

Step 17



- Wedge the plastic card back into the top left corner.

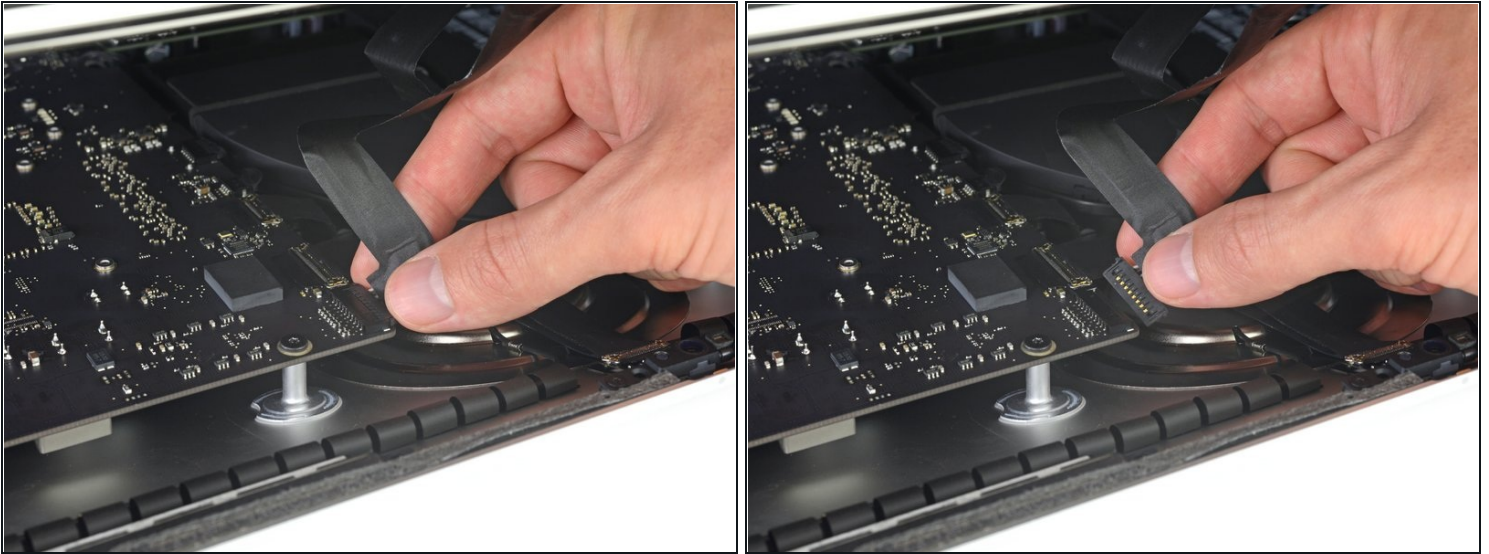
Step 18



- With both plastic cards inserted as shown near the corners, gently twist the cards sideways to increase the gap between display and case.
- ⓘ If there are any sections that seem to stick and won't separate, stop twisting and use one of the cards to cut the remaining adhesive.
- Begin to lift the top of the display up from the frame.

⚠ Only lift the display a few inches—the display data and power cables are still connected to the logic board.

Step 19 — Display Assembly Cables



- ① Lift the display up enough to have easy access to the connector, but not so much that you stretch the cables and stress their connections (about 8").
- Hold the display with one hand while using your other hand to unplug the display power cable.

Step 20



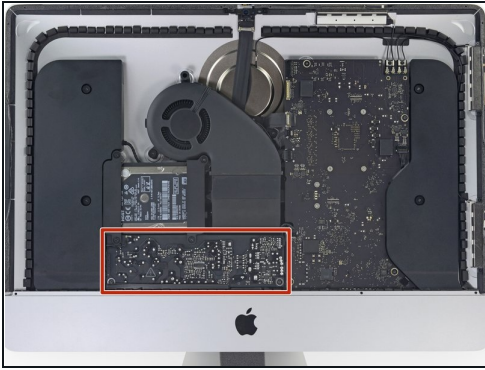
- Continuing to support the display with one hand, flip up the metal retaining bracket on the display data cable.
- Carefully pull the display data cable from its socket on the logic board.
 - ⚠ Be sure to pull the display data cable connector straight out of its socket, keeping it parallel to the motherboard, to avoid damaging it.

Step 21 — Display Assembly Separation



- Lift the display up to a near-vertical position.
- ① At this point there is still a strip of adhesive along the bottom of the display that will hold the display to the frame like a hinge. You can loosen this adhesive by working the display up and down a few times.

Step 22



⚠ Be very careful not to touch the capacitor leads or any exposed solder joints on the back of the power supply (boxed in red).

- Grasp the small tab at the end of one of the bottom edge display adhesive strips and pull the adhesive toward the top of the iMac to remove it.
 - Repeat this step with the other adhesive strip and remove it.
- ⓘ If either adhesive strip breaks before it's removed, use a [plastic card](#) to slice through the remaining adhesive.

Step 23

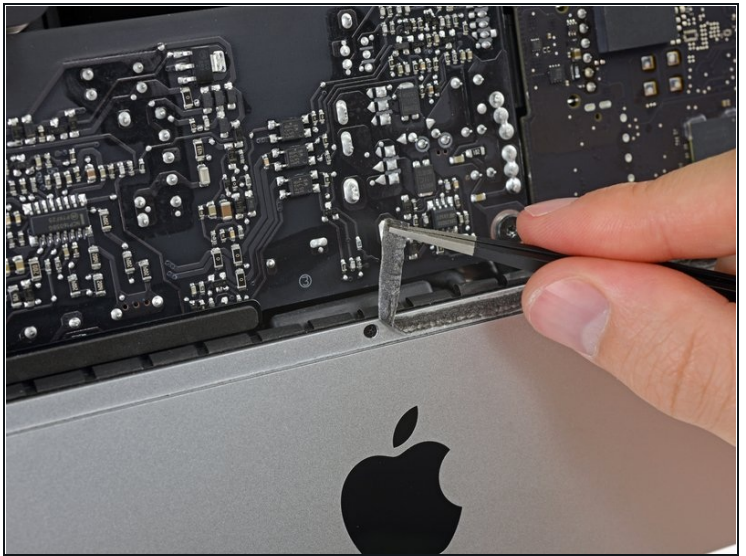
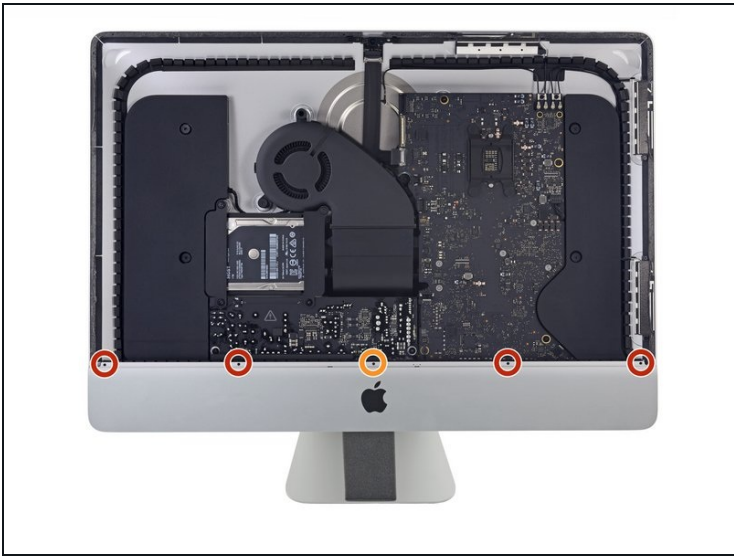


- Lift the display up from the frame and remove it from the iMac.
- It may be necessary to slowly lift from one side to peel against the remaining adhesive.

⚠ Be very careful handling the display—it's big, heavy, and made of glass.

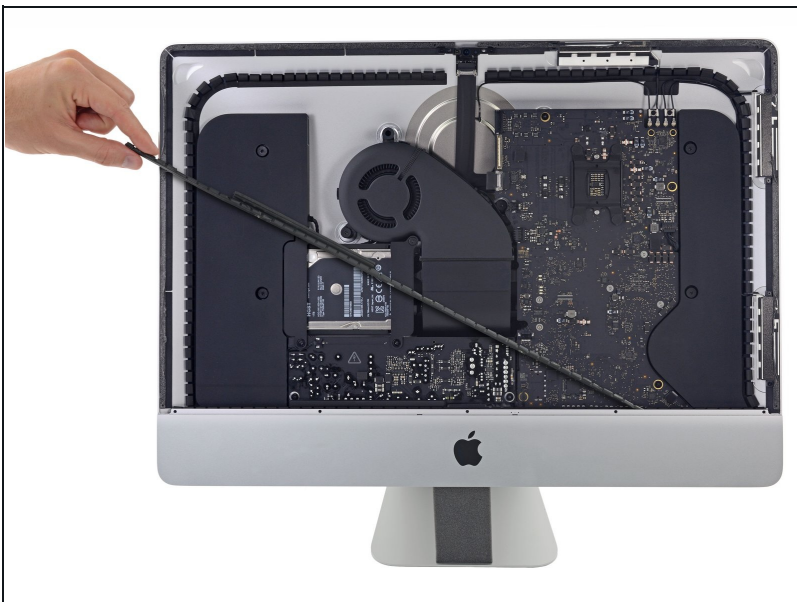
- ☑ After the adhesive is cut, it cannot be used to re-seal the display in place. Follow [this guide](#) to replace the adhesive strips that secure the display to the rear enclosure.

Step 24 — Lower Support Bracket



- Remove the following five Phillips screws holding the lower support bracket in place:
 - Four 3.2 mm screws
 - One 1.7 mm screw
- ① You may need to peel up the display adhesive lining the bottom edge of the iMac enclosure to access the screws.

Step 25



- Remove the lower support bracket (a.k.a. "chin strap") from the iMac enclosure.

Step 26 — Hard Drive Brackets



- Remove the following T10 Torx screws securing the hard drive brackets to the iMac:
 - Two 21 mm screws
 - One 9 mm screw
 - One 27 mm screw

Step 27



- Remove the left and right hard drive brackets from the iMac.

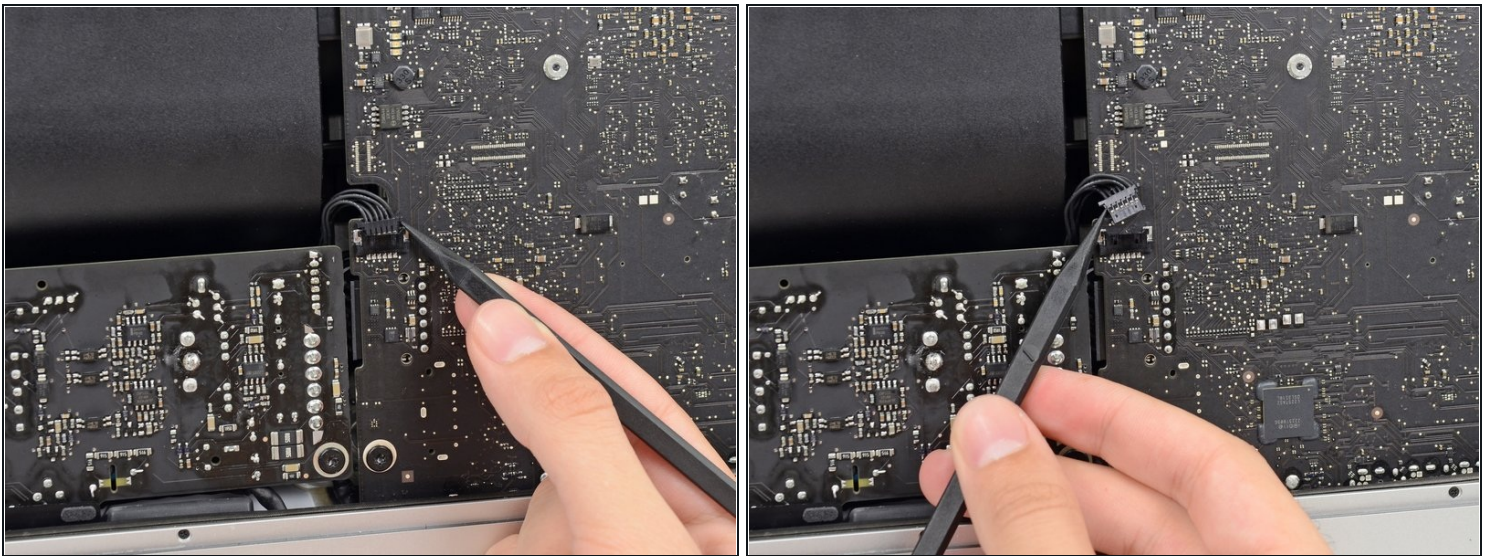
Step 28 — Power Supply



⚠ The next few steps bring your hands close to the exposed face of the power supply. **Do not** touch the face of the power supply or any of the exposed solder. Touching it risks a high voltage shock from the many large capacitors attached to the board.

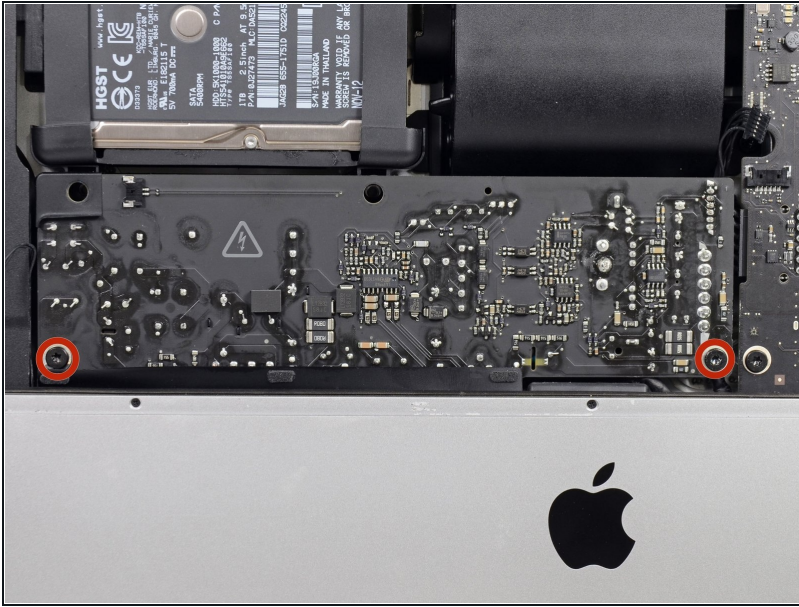
- Use the tip of a spudger to push each side of the power button cable connector and gently *walk* it out of its socket.

Step 29



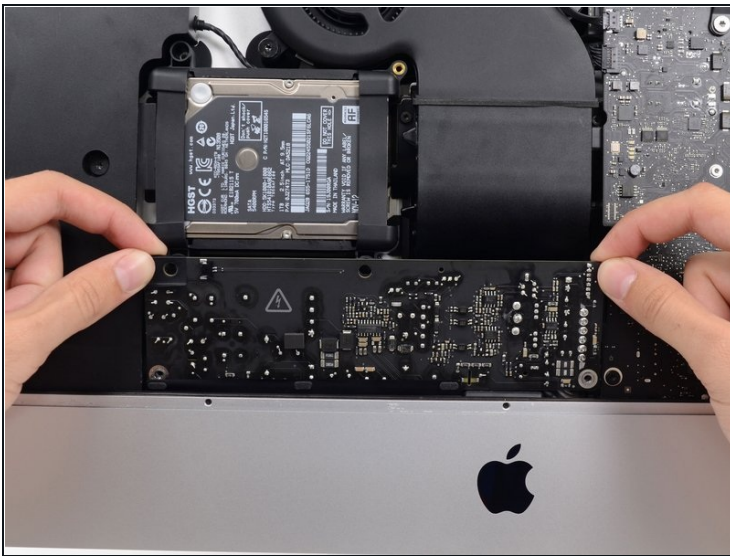
- Use the tip of a spudger to push each side of the power supply control cable connector and gently *walk* it out of its socket.

Step 30



- Remove the two 7.2 mm T8 Torx screws securing the power supply to the rear enclosure.

Step 31



⚠ When working on the power supply, **be very careful** not to touch the capacitor leads or any exposed solder joints on the back of the power supply. Only handle the board by the edges.

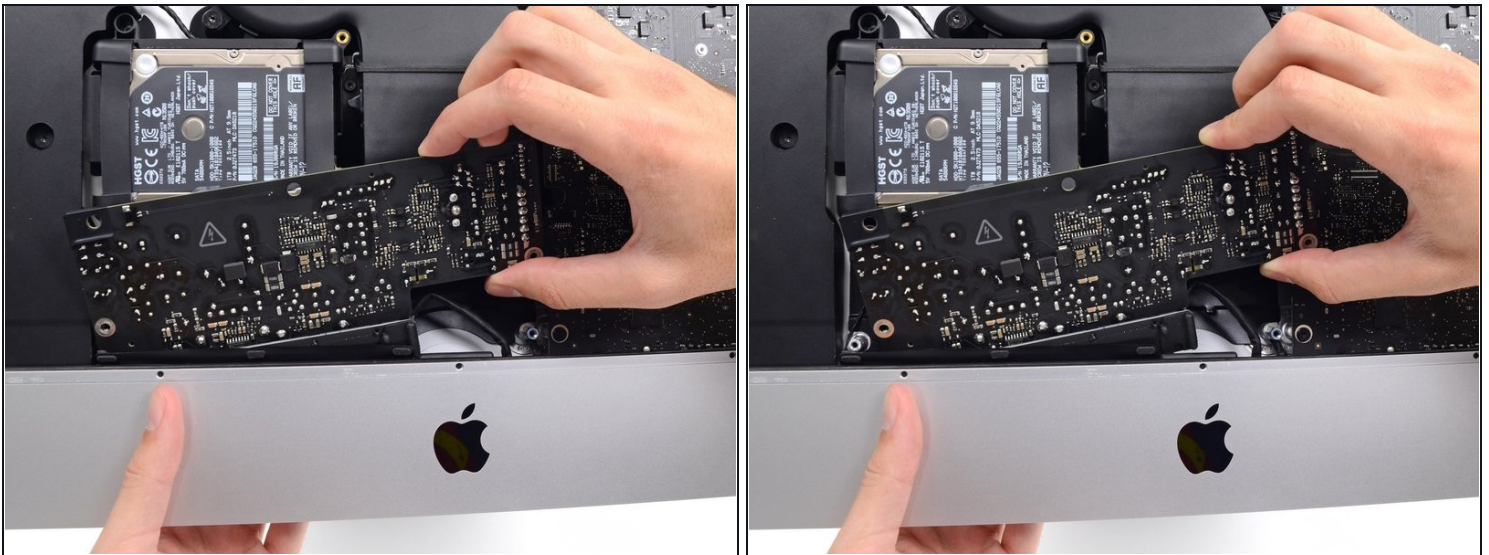
- Tilt the power supply forward.

Step 32



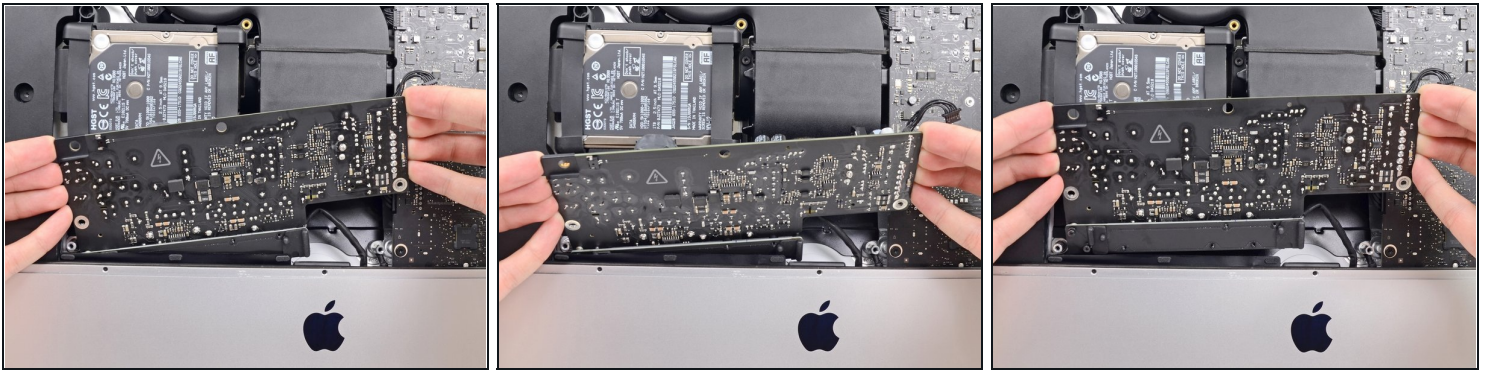
- Pull the power supply slightly up and out from the rear enclosure.
- Rotate the power supply counterclockwise, lifting the right side up about an inch higher than the left.

Step 33



- Slide the power supply to the right to clear the screw posts on the rear enclosure.

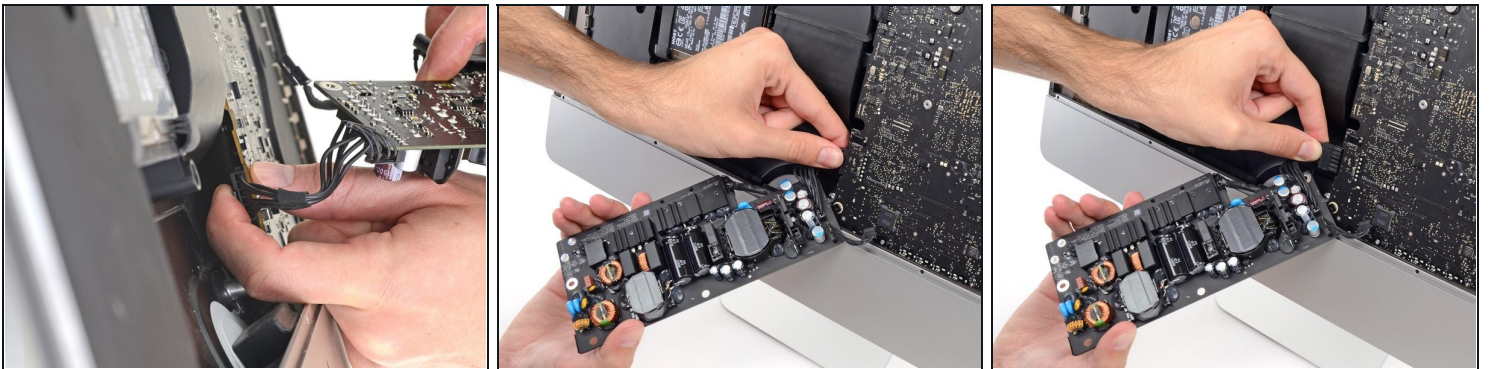
Step 34



- Rock the power supply forward and remove it from its recess in the rear enclosure.

⚠ **Do not** try to completely remove the power supply from the iMac yet—it is still connected to the logic board.

Step 35



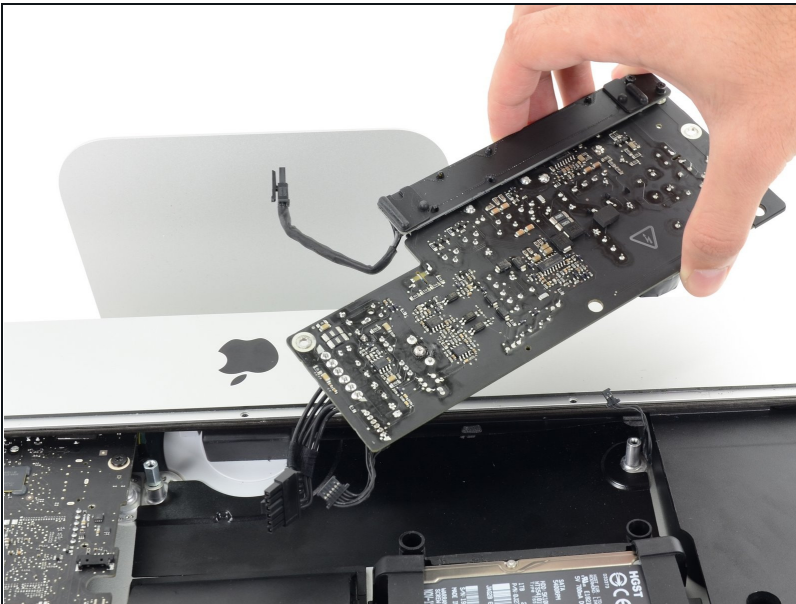
- ⚠ **Be very careful** not to touch the capacitor leads or any exposed solder joints on the back of the power supply. Only handle the board by the edges.
- ⚠ Do not let any of the exposed solder joints come in contact with a metal surface, as that can cause a short.
- ⓘ Flip the power supply over to access the DC power cable connection behind the logic board.
- To disconnect the cable, squeeze the [release clip](#) on the back side of the connector, behind the logic board, and pull the connector straight out.

Step 36



- ⓘ You may find it helpful to set the iMac down on its back for the next couple of steps.
- Use the flat end of a spudger to press the [release clip](#) on the side of the AC inlet cable connector inward.
 - While pressing on the release clip with the spudger, grasp the AC inlet cable, and pull the connector straight out of its socket.

Step 37



- Remove the power supply from the iMac.

To reassemble your device, follow these instructions in reverse order.