



UE BOOM 2 Battery Replacement

The battery is located under the top cover of...

Written By: Brandon Yowakim



INTRODUCTION

The battery is located under the top cover of the UE Boom 2. It is held in place by 4 screws and can be replaced with a single screwdriver and a spudger.

TOOLS:

Metal Spudger Set (1)

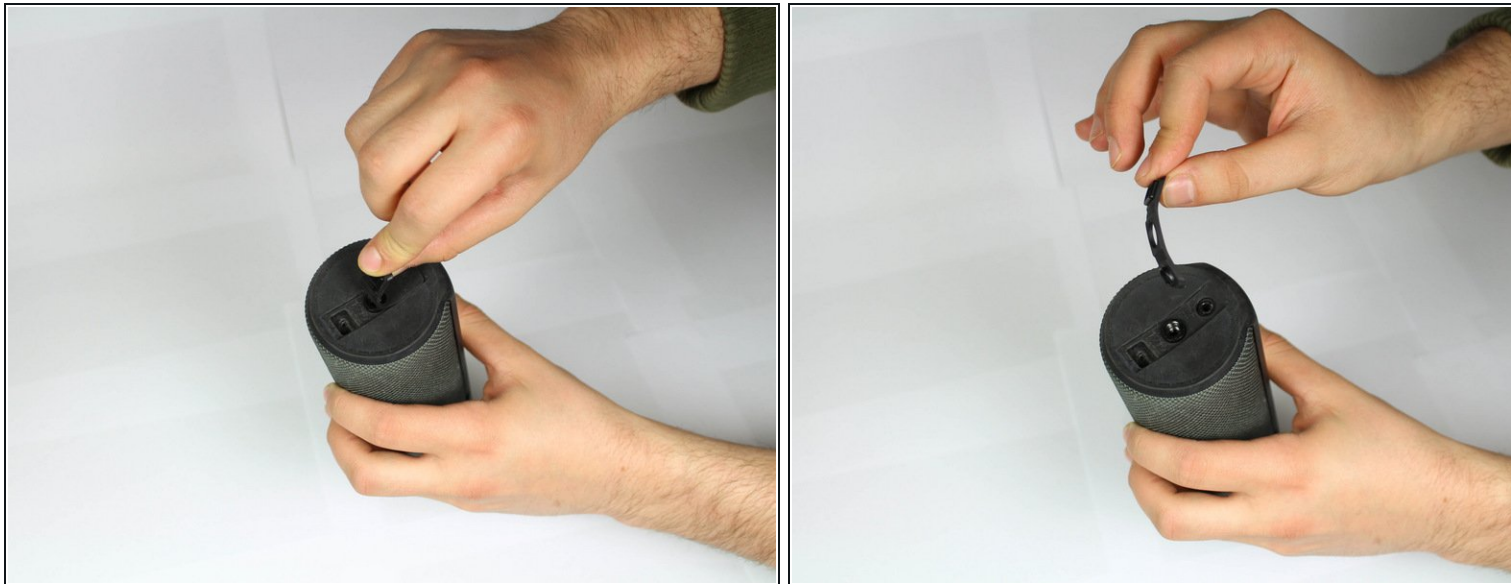
Phillips #2 Screwdriver (1)

Step 1 — Battery



- First, remove the D-ring located on the bottom of the UE Boom 2, the opposite end of the power button.
- Remove by twisting in a counter-clockwise motion.

Step 2



- After the D-ring has been removed, remove the rubber port cover.

Step 3



- Remove the rubber stripping using a metal spudger.
- Work around the edge of the rubber stripping slowly prying up the edge.

Step 4



- Continue removing the rubber stripping down the side.

Step 5



- Use a Phillips #2 screwdriver to unscrew the four 15mm screws on the bottom of the speaker. DO NOT OPEN SIDE WITH RED CAP (AS SHOWN IN SOME IMAGES), BATTERY IS ON OPPOSITE SIDE
- Use a metal spudger to pry up the plastic cap.

Step 6



- Carefully un-loop the cable with a plastic spudger and unplug from motherboard.
- Slowly pull out the battery, and handle with care.

To reassemble your device, follow these instructions in reverse order.