



Huawei P10 Main and display flex disconnect

prereq - disconnect main and display flex cable.

Written By: Dominik Schnabelrauch



INTRODUCTION

prereq - disconnect main and display flex cable.

TOOLS:

[Spudger](#) (1)

[iFixit Opening Tool](#) (1)

Step 1 — Back Cover



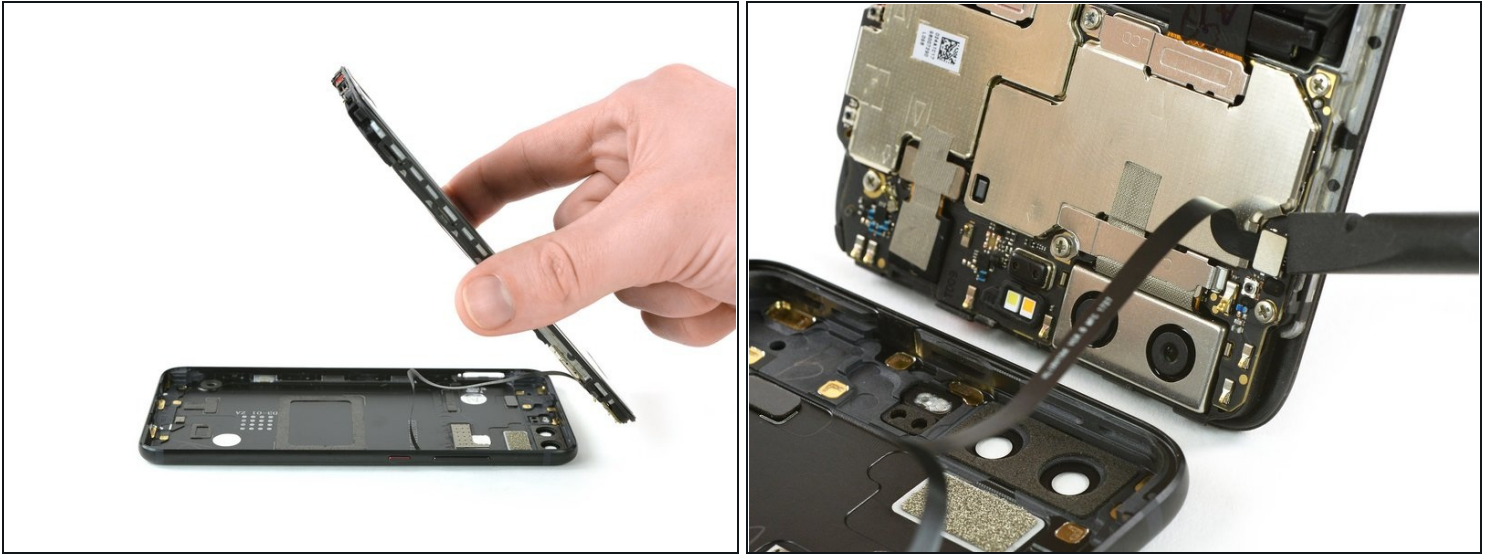
- Switch off your phone.
- Remove the two Pentalobe P2 screws at the bottom.
- Remove the SIM card tray.

Step 2



- Insert a plastic opening tool between the display and the case starting at the bottom area of your phone.
- Carefully pry the display with its parts out of the case.
 - ⓘ Getting the prying tool in will require some effort, be careful not to slide the tool too much or you might slightly damage the housing.
- After you pried out the bottom end, use the opening tool to open the clamps on both sides.

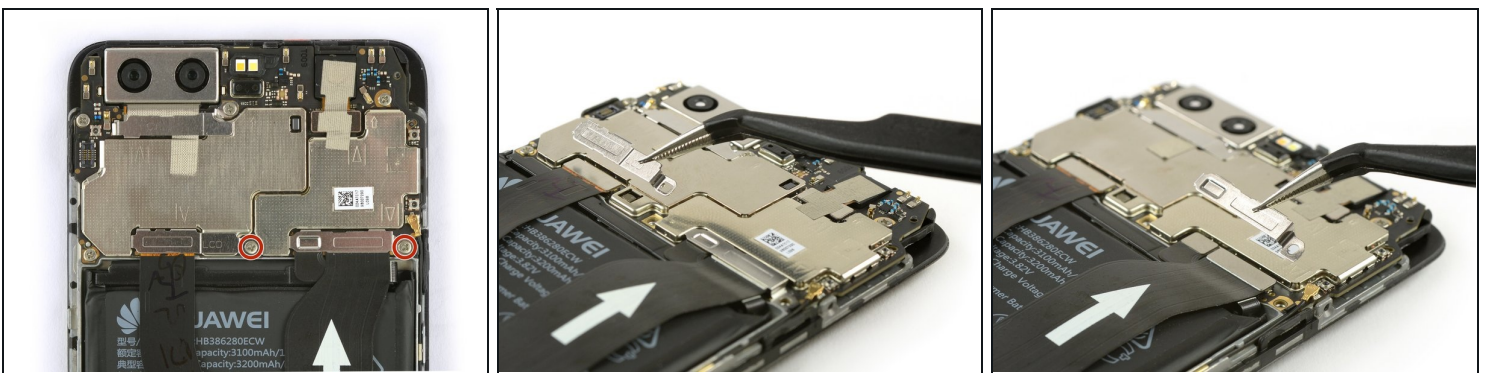
Step 3



⚠ Don't open the phone all the way, yet. The cable for the standby and volume buttons is still connected to the back cover.

- Swing open the phone backwards.
- Use a spudger to disconnect the power- and volume button flex cable.

Step 4 — Main and display flex disconnect



- Remove the two Phillips #00 screws.
- Use [tweezers](#) to remove both metal plates.

Step 5



- Use a spudger to disconnect the interconnect, the battery and the display flex cable.

To reassemble your device, follow these instructions in reverse order.