



Canon Pixma MP250 Disassembly

White and gray colored printer

Written By: Martine





TOOLS:

- [Philips Screwdrivers \(one normal, one small\)](#)
(1)
 - [Spudger](#) (1)
-

Step 1 — Canon Pixma MP250 Disassembly



- Canon Pixma MP250
 - All-in-one: printer, scanner and copy machine
 - Maximum paper size is A4
 - Build in WiFi
 - Weight: 5.8 kg

Step 2



- The first thing you do is take off the top cover of the printer. After opening the snap fits, the top cover can be slid off easily.
 - ⚠ Don't break the snap fits.

Step 3



- The first two screws you will find are on the backside of the printer. Take these out with a Phillips screwdriver. The other screw is on the other side in the same place.
- ⓘ Nothing yet happens when the screws are out.

Step 4



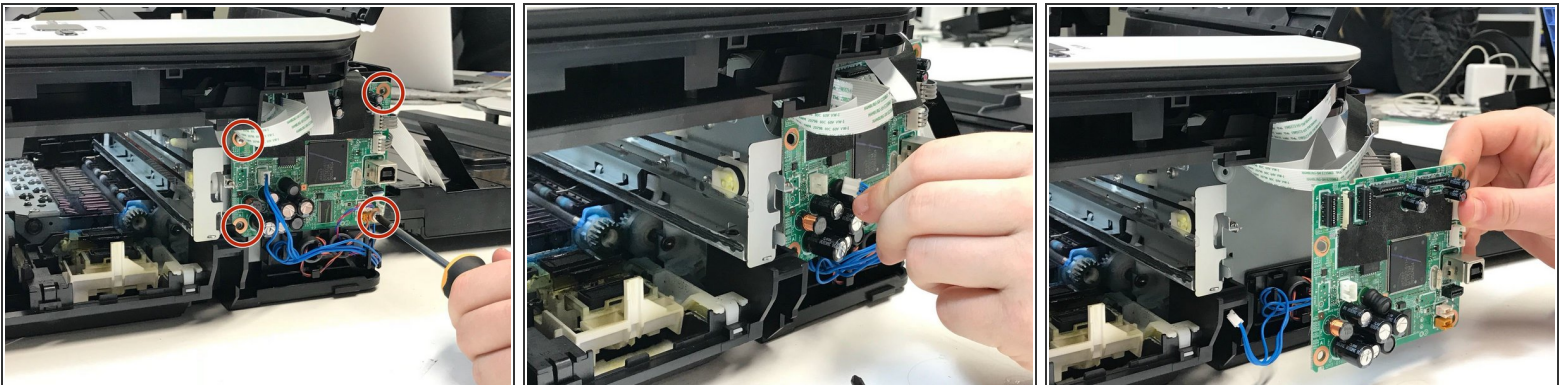
- To get to the inside of the printer, you have to take off the scan plate. It is connected to the body of the printer with hinges and screws.
- Open the scan plate and you will find the spot to replace the ink. Here you will see the inside of the printer. In the right front corner you can find the blue stick. Twist it to remove it from its gully.
 - Now, the scan plate can be opened completely.
 - Search for screws, one in both corners and unscrew them.
- After taking out the screws, the valve can be taken off by sliding the part to the right.

Step 5



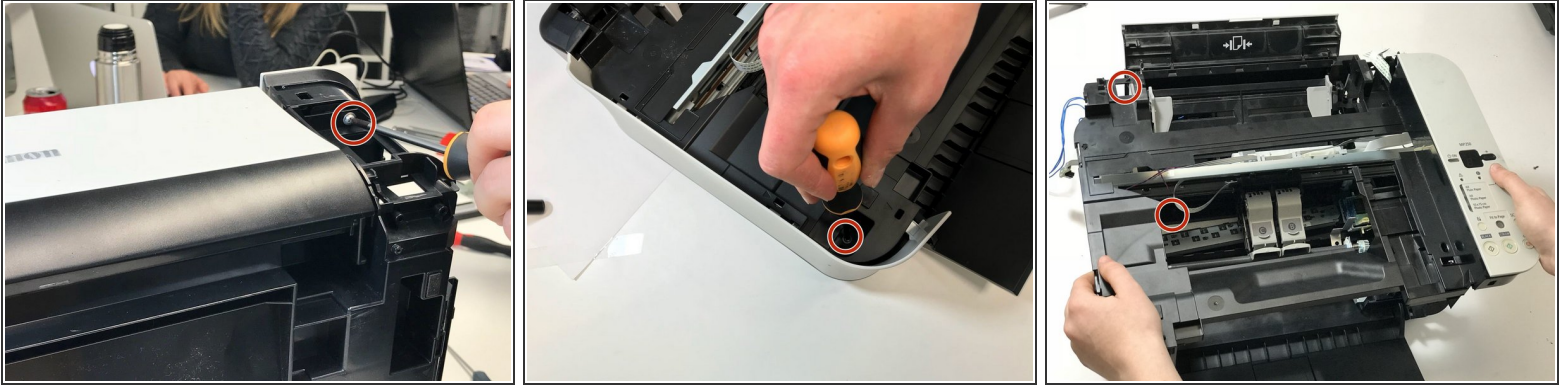
- The body around the printer needs to be taken off to get to the inside of the printer and to be able to reach the inner parts better.
- The left and right side of the body can be removed; they're connected with snapfits.
- ❗ The screws that are twirled out in step 3 are connected to this part of the body. That is why you can take the side off by hand and spudger.

Step 6



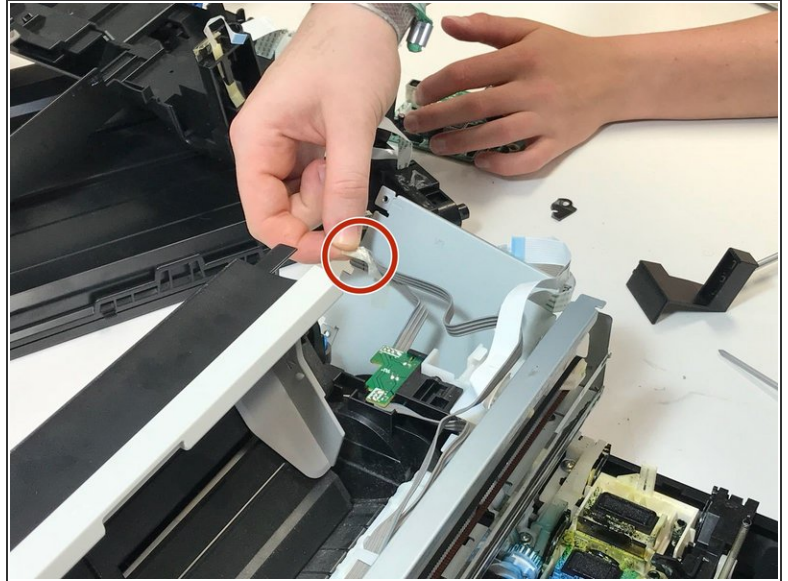
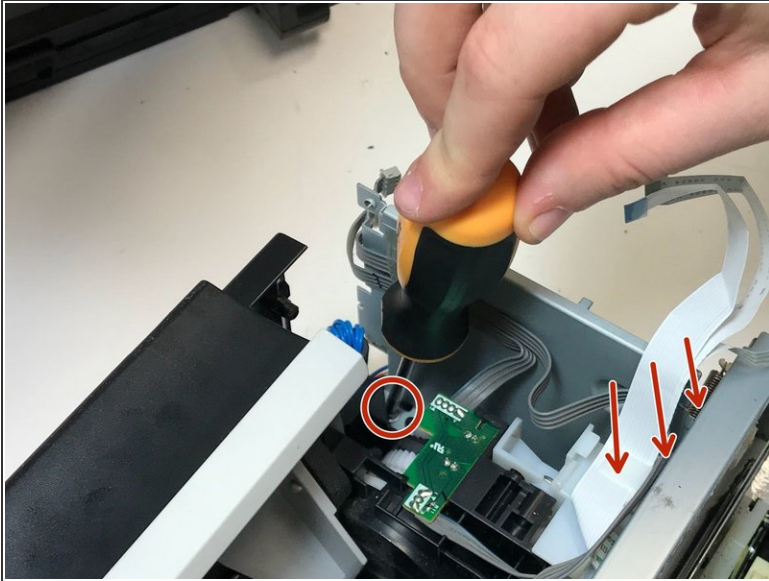
- After taking off the sides, you can see the motherboard on the right side of the printer.
- The motherboard is connected to the printer with 4 screws and 8 wires.
- Twirl the screws loose and take the wires out.

Step 7



- To remove the last cover on the top that is left, unscrew right bottom corner of the middle cover. Unscrew left top corner of the middle cover and lift bottom corner as shown in the second picture. Also in the inner part are two screws hidden. One is assigned with the circle and can be seen. The other one is hidden.
- ⓘ When we wanted to take off the cover, there was one screw that we did not see. It was impossible to reach it. We broke off a part of the plastic.

Step 8



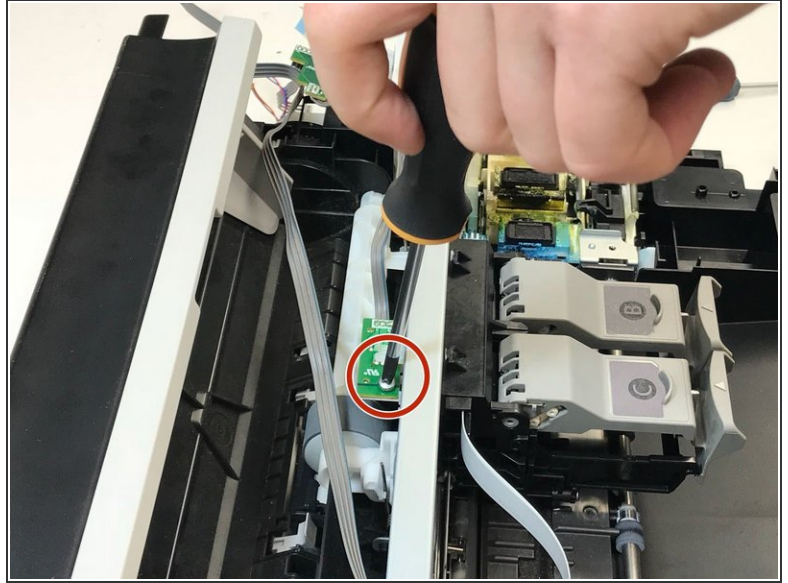
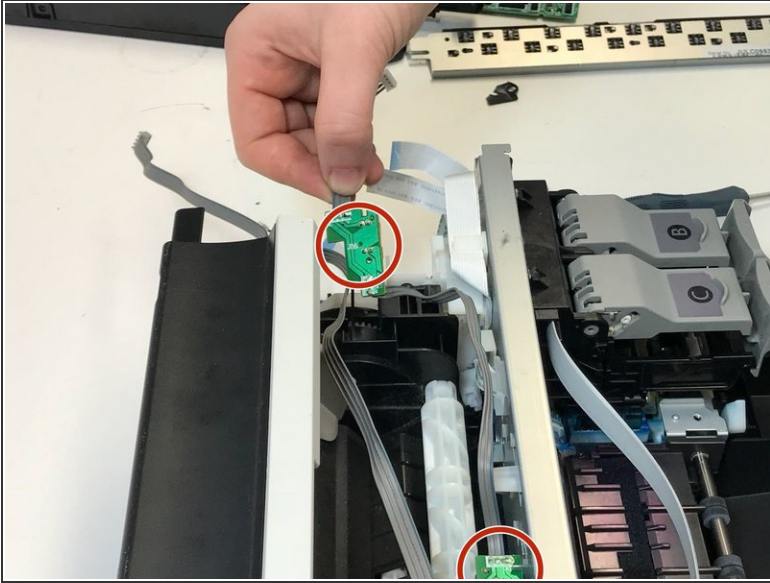
- The body of the motherboard can be removed after the middle top is removed.
- The body of the motherboard is connected to the body with 4 screws. One assigned with the circle in the picture. The other three can be found on the right side of the body (assigned with the arrows).
- After removing the body you can take the little tape off which serves to keep the threads together.

Step 9



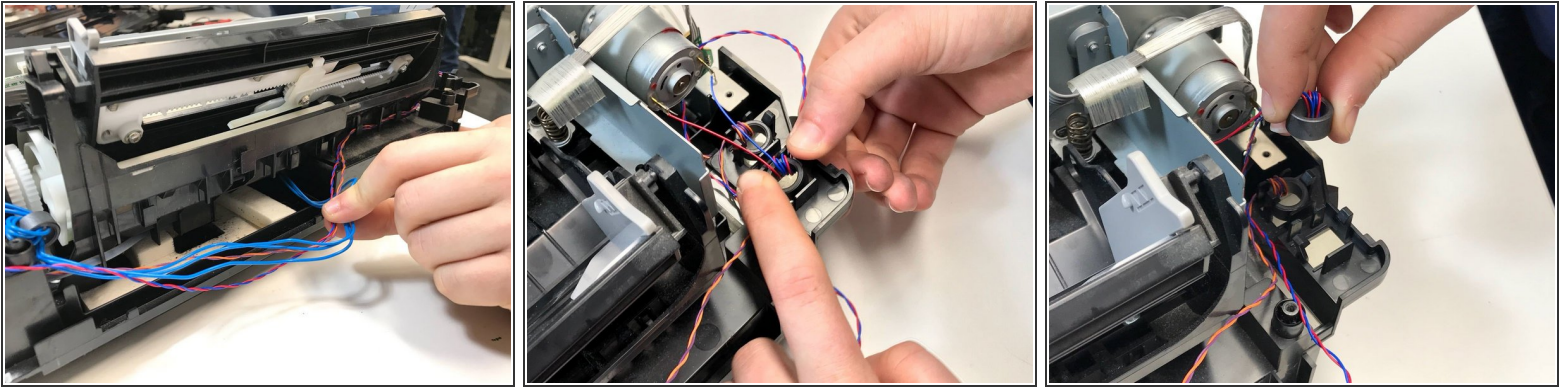
- A big part that is left is the backside of the printer and can easily be removed.
- It is connected with a snap fit and can be taken off by hand.

Step 10



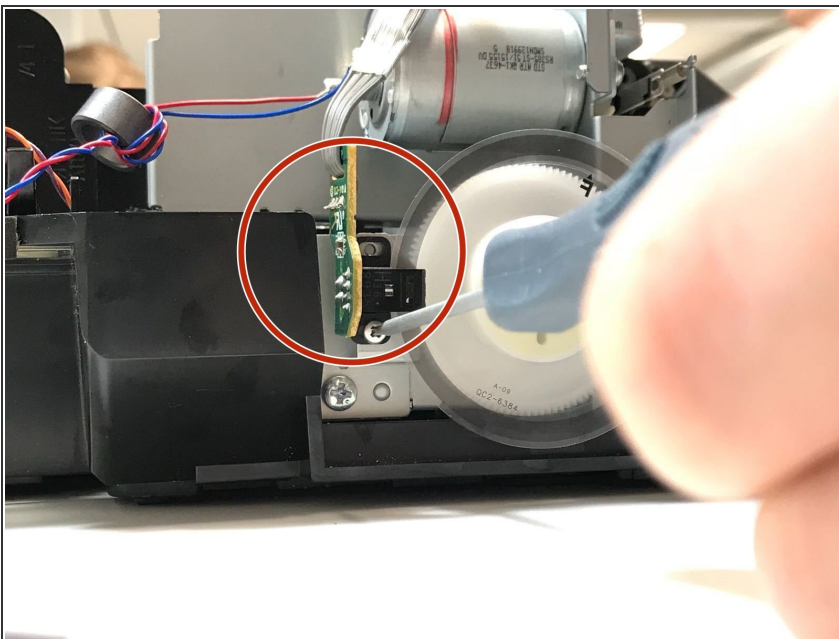
- The print board is connected with 7 screws and 3 wires. These screws are situated on the right side of the gray board in the middle.
- The flat gray wire is connected to two small motherboards. One of the motherboards is connected with one screw and the other is clicked in.
- Slide the first motherboard out of its case and unscrew the one that is connected to the print board.

Step 11



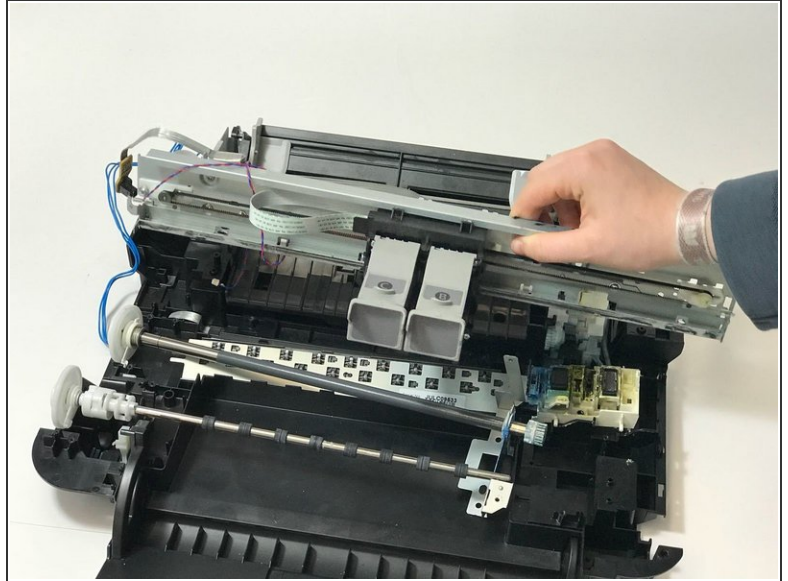
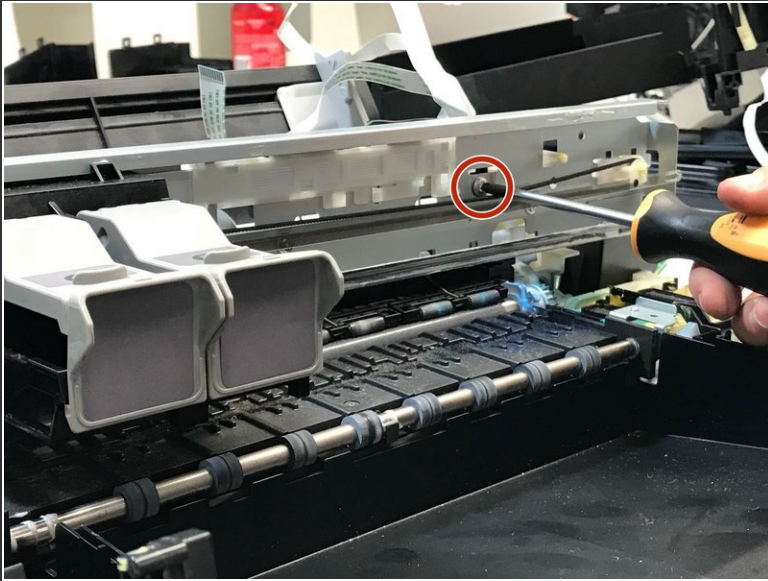
- The blue and red wires are connected to an electro motor and the backside of the printer. The wires are also wrapped around a cylinder. (Can be seen in pictures 2 and 3.)
- Follow the wires along the backside of the printer and loosen them everywhere where they are wrapped around the backside.
- The cylinder is connected by snap fit systems. After disconnecting the cylinder, the wires are loose.

Step 12



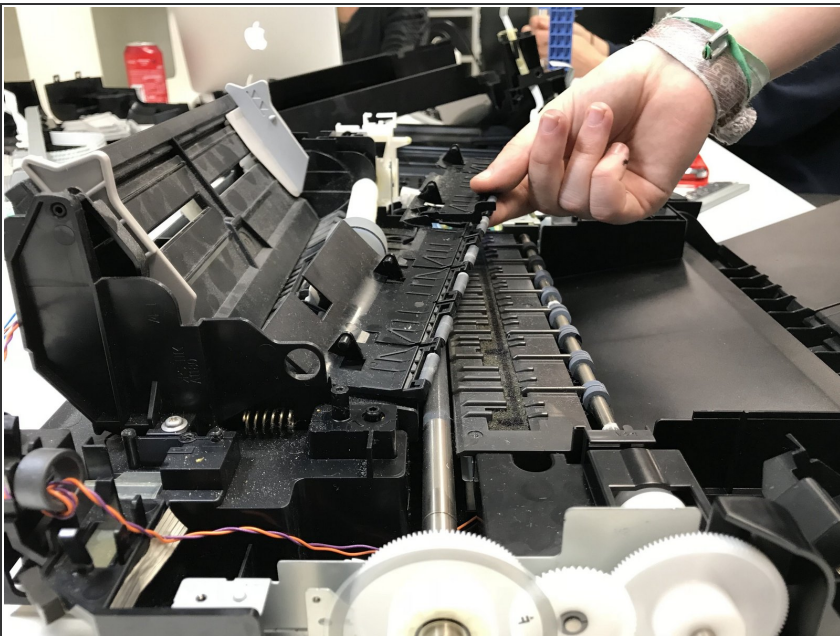
- The last wire to loosen is the one next to the electro motor.
- The wire is connected to a small motherboard which can be disconnected by taking out one screw.
- ⚠ The screw is very small. You will need a smaller Phillips screwdriver size for this one.

Step 13



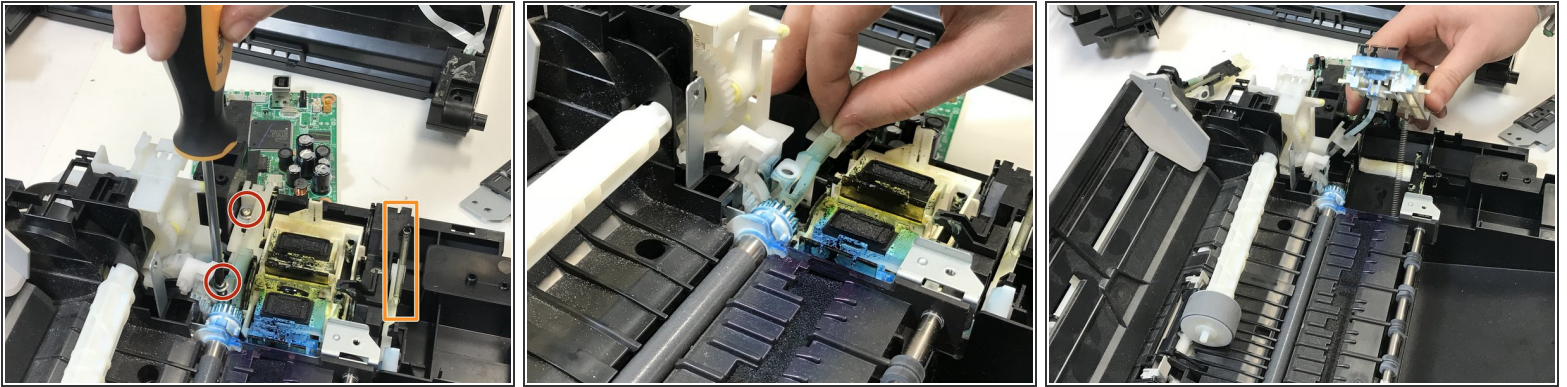
- The wires are loose and the print board is almost ready to take out.
- Unscrew the last screws in the print board.
- The print board can be taken out.

Step 14



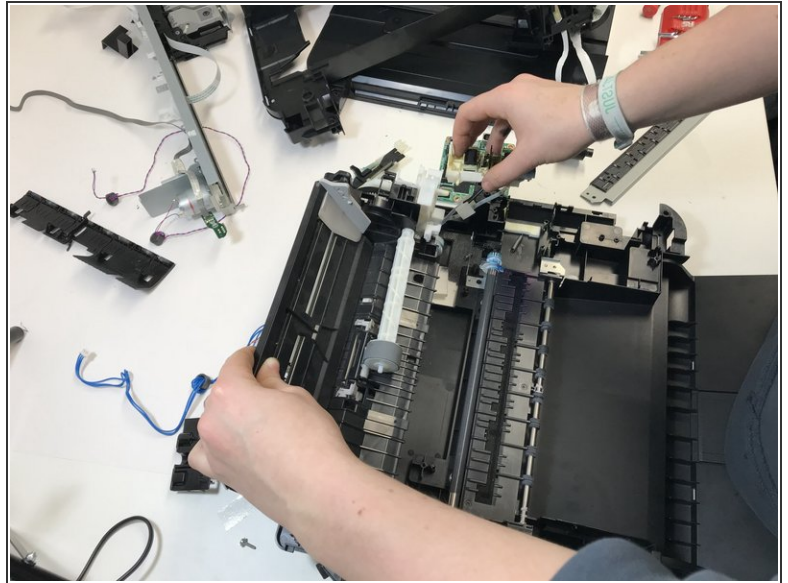
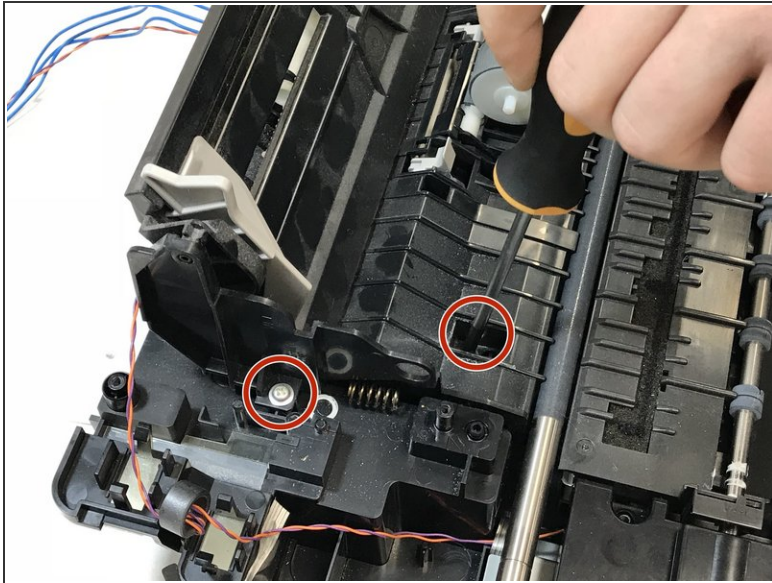
- Now that the print board is off, you can slide off the black paper roller.
- The left side of the paper roller can be slid to the right.

Step 15



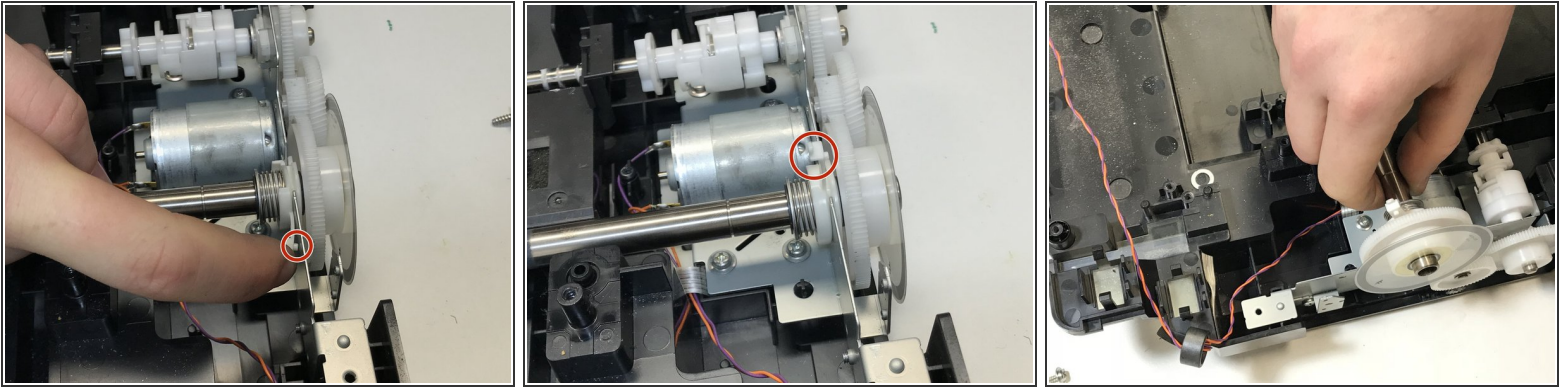
- The ink compartment is connected to the base of the printer with two screws and one spring.
 - After taking out the screws, there are two loose parts you can easily lift out.
 - After taking out the two smaller parts, take out the ink compartment.
- ⚠ The ink compartment is connected with a spring.

Step 16



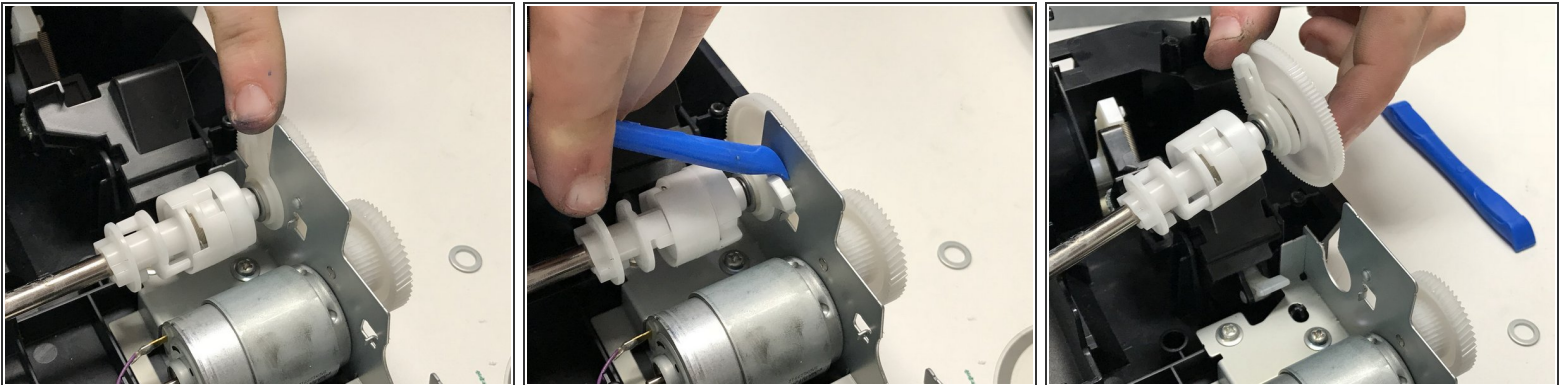
- The paper tray is fastened with four screws.
 - In the first picture, it is shown where the first two screws are located. The remaining two screws are on the other side on the same places as the screws in the pictures.
- ⚠ When taking out the paper tray, make sure you also take a part of the ink tank with it (as shown in the last picture).

Step 17



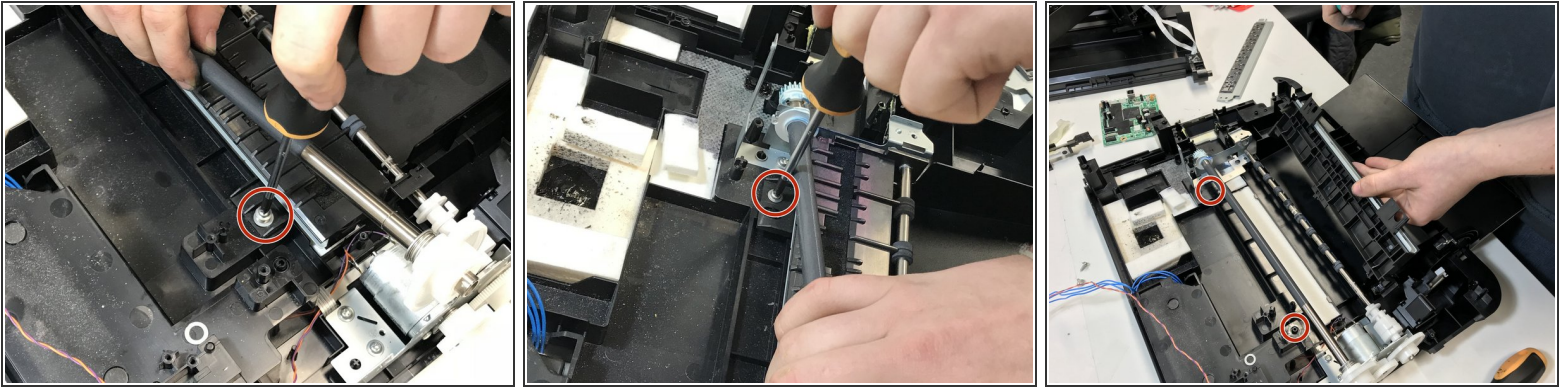
- The rods with gears are the next parts to be removed. How to do this will be explained in the final steps.
- The first to be removed is the biggest gear. This one is laid in and fastened with a white snap fit system.
- Lift the snap fit a little and turn it to the top.
- Lift the rod.

Step 18



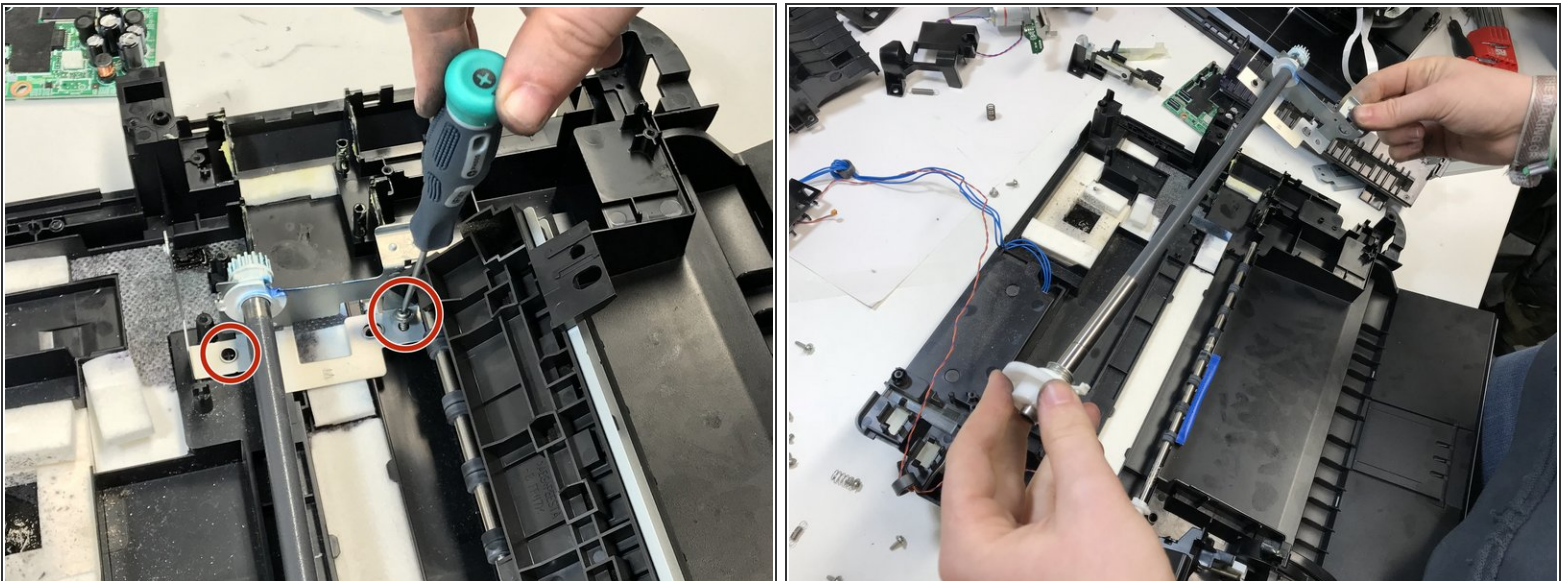
- Taking out the next gear is roughly the same as in the previous step.
- ❗ Mind that this snapfit is tighter than the other one. A plastic opening tool is needed to lift the snapfit.

Step 19



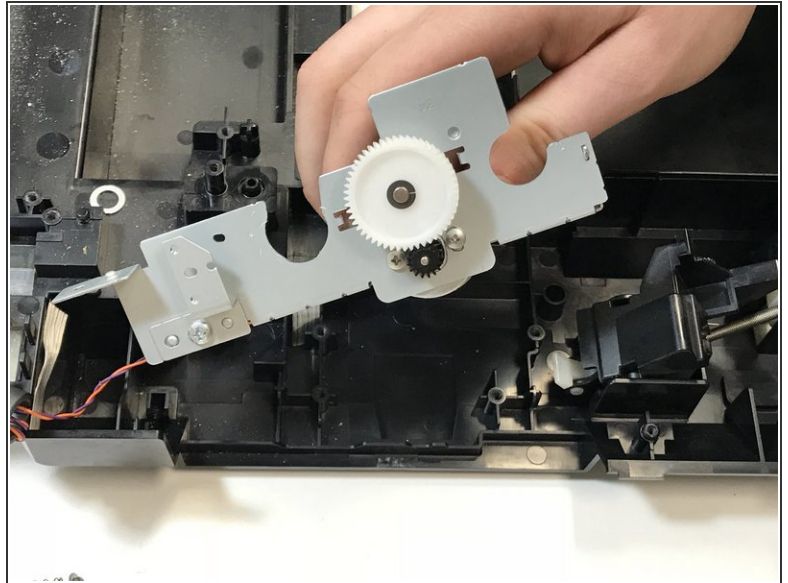
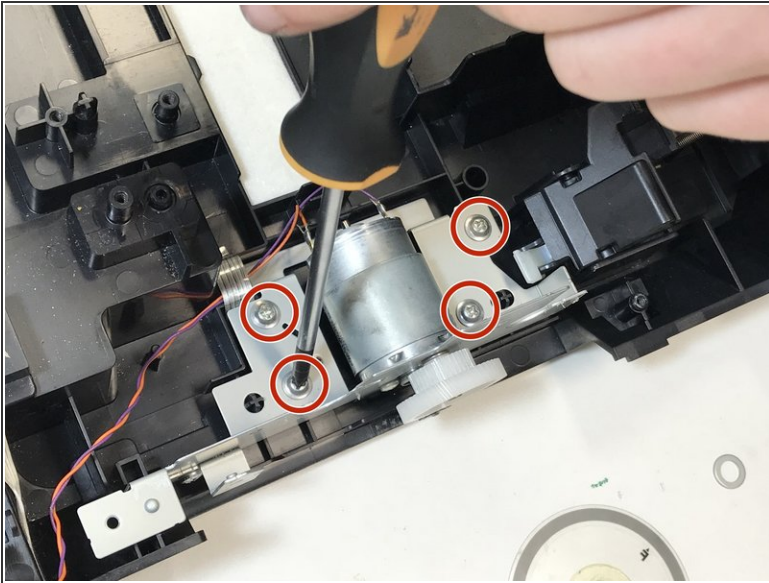
- Under the rod is the last loose part of the paper roller system. In this step we describe how to take this one out.
- There are two screws (overview in third picture) under the rod of the gear, unscrew these in order to take out the piece under the rod.
- ❗ The right part of the rod is still fixed to the body.

Step 20



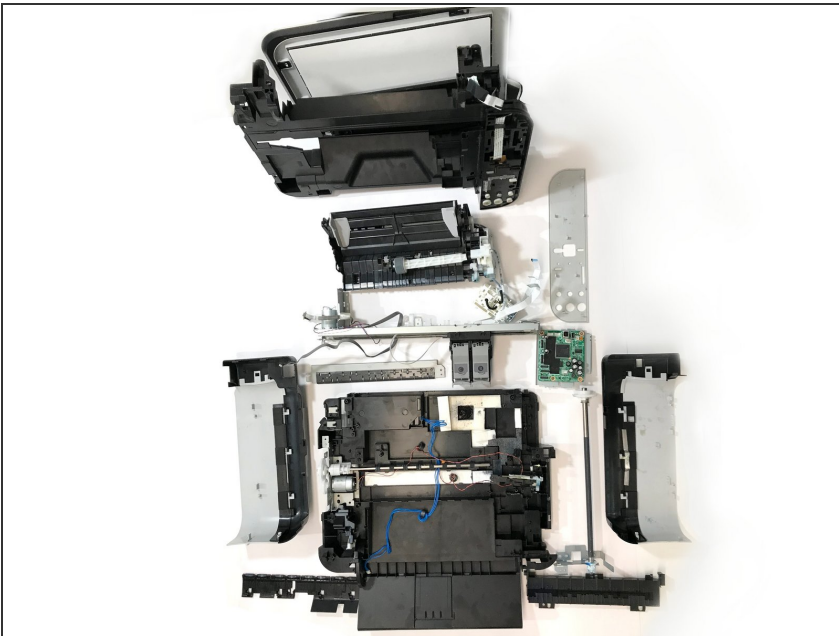
- Now, we will take out the rod completely.
- Unscrew the housing of the rod which is connected with two screws and the gear and take the rod out.

Step 21



- Lastly, we will take out the electric motor of the paper roller.
- The electric motor is connected to the body of the printer with four screws. Unscrew these screws and take out the motor.

Step 22



- In 21 steps the Canon Pixma MP250 is taken apart.

To reassemble your device, follow these instructions in reverse order.