



Samsung Galaxy J3 Luna Pro Motherboard Change Replacement

This guide will allow users to switch out the motherboard of the Samsung Galaxy J3 Luna Pro.

Written By: shima1h



INTRODUCTION

If you ever find yourself in a scenario where you have a completely normal phone and then out of nowhere it ceases to operate. It may be time for a motherboard change. This guide will provide the step by step process of switching the processing component of the Samsung Galaxy J3 Luna Pro.



TOOLS:

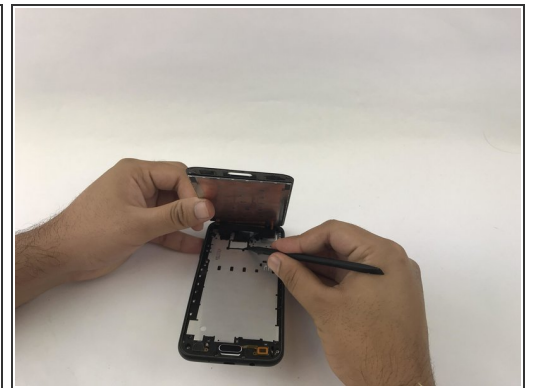
- [Spudger](#) (1)
 - [iFixit Opening Tools](#) (1)
 - [Suction Handle](#) (1)
 - [JIS #00 Screwdriver](#) (1)
-

Step 1 — Motherboard Change



- Turn off the phone.
- Remove the back cover and battery

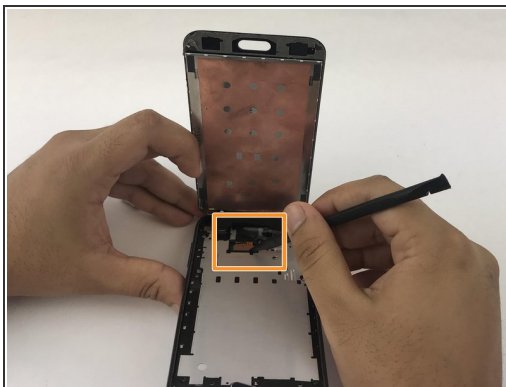
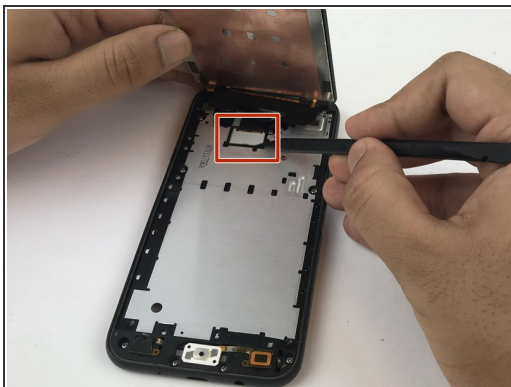
Step 2



- Attach a suction cup to the screen and pry upwards.
- Insert the plastic opening tool into the gap under the screen and work your way around the perimeter.

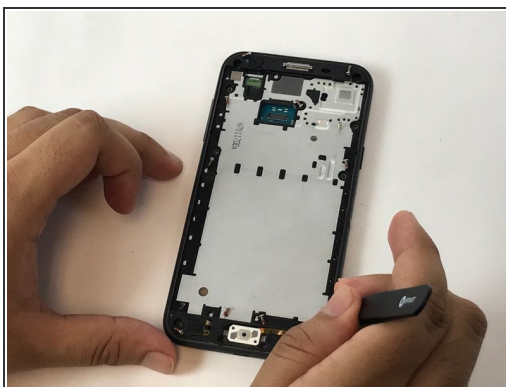
⚠ Don't remove the screen completely as there are cables still connection the two pieces.

Step 3



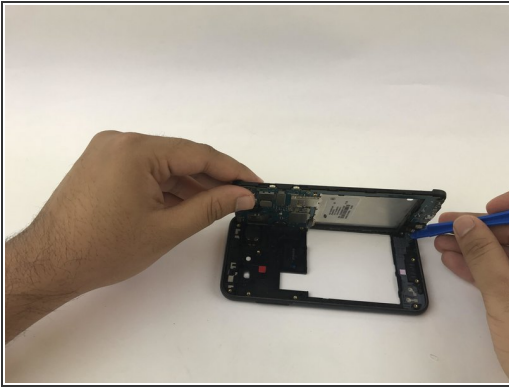
- Use the pointy end of a spudger to remove the white plastic cover from the display cover.
- Use the spudger to pry up the display cable from the motherboard.
- Remove the screen.

Step 4



- Remove the eleven JIS 00 screws from the mid-frame.
- Using a spudger, pry the mid-frame from the screen.

Step 5



- Remove the motherboard from the mid-frame.

To reassemble your device, follow these instructions in reverse order.