



# Washing Machine Disassembly to Access Water Drain Pump

Disassemble Siemens washing machine to get access to the water drain pump, to remove debris or to replace it.

Written By: Tom Verhoeff



---

## INTRODUCTION

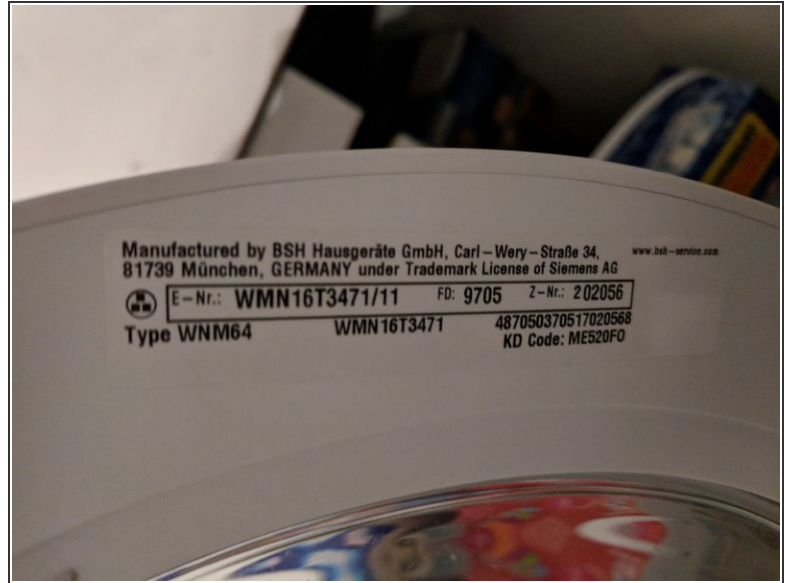
This guide provides the steps needed to disassemble the washing machine so that you can open the water drain pump.

---

### TOOLS:

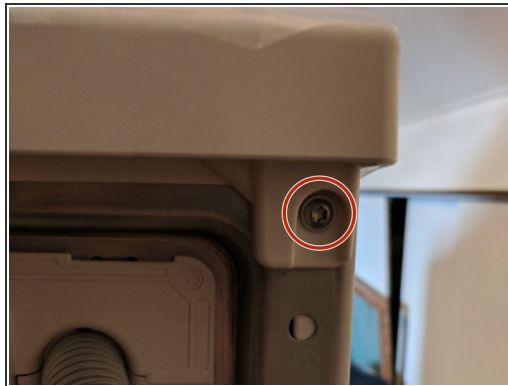
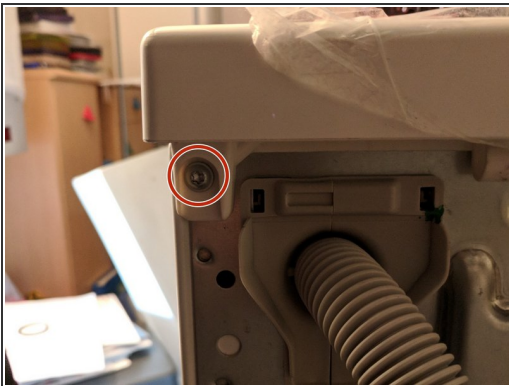
- [T20 Torx Screwdriver](#) (1)
  - [6mm \(socket\) wrench](#) (1)
  - [Plastic Opening Tools flat blade screwdriver](#) (1)
  - [Channellock Groove Joint Pliers](#) (1)
  - [Towel](#) (2)
  - [Bowl](#) (1)
-

## Step 1 — Safety precautions



- **UNPLUG POWER CORD; TURN OFF WATER SUPPLY.**
- Check machine details on the inside of the main door.

## Step 2 — Remove top cover



- Move washing machine away from wall to make rear and front accessible.
- Using Torx T20, unscrew two screws (top left and top right on rear side) .
- Slide top backwards, lift it off, and put it aside.

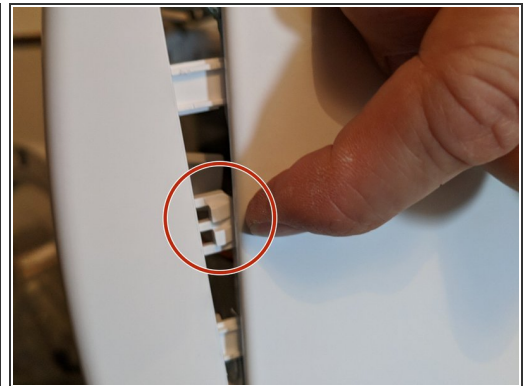
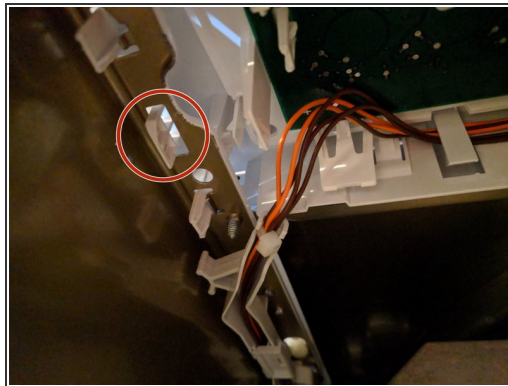
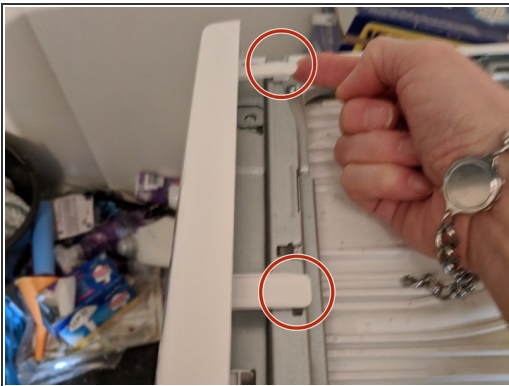


### Step 3 — Remove detergent dispensing tray, and 3 screws



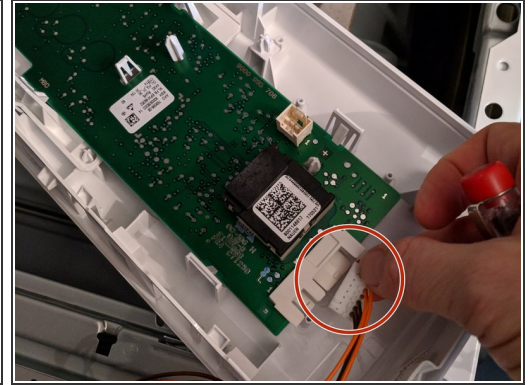
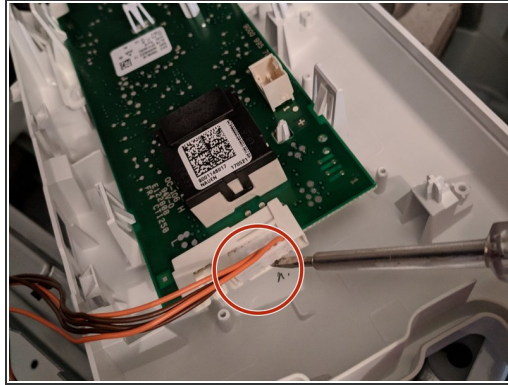
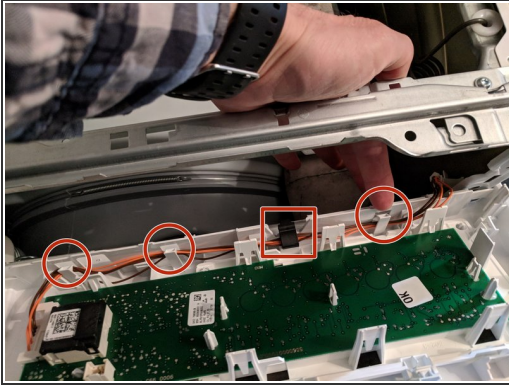
- Push down blue part in the middle to release the tray, and pull it out completely.
- Unscrew three T20 screws; the one on the lower right is shorter.

### Step 4 — Remove control panel



- Unhook three hooks at the top (two shown).
- On the inside, on the right, there is another hook (marked), sitting between two guiding notches without hooks.

## Step 5 — Disconnect control panel



- Release the cables by gently pressing the hooked guides. Note that the black part (marked by a rectangle) must be unlocked.
- Finally, unlock the connector (e.g. with your nails or a flat-blade screwdriver) and pull it out.
- Put the control panel aside.

## Step 6 — Immobilize the tumbler unit



- The tumbler unit is freely suspended. Wedge a towel on the rear side behind the tumbler unit to immobilize it. This will prevent damage when tilting the washing machine later on.
- **DO NOT FORGET TO REMOVE THIS** when reassembling!

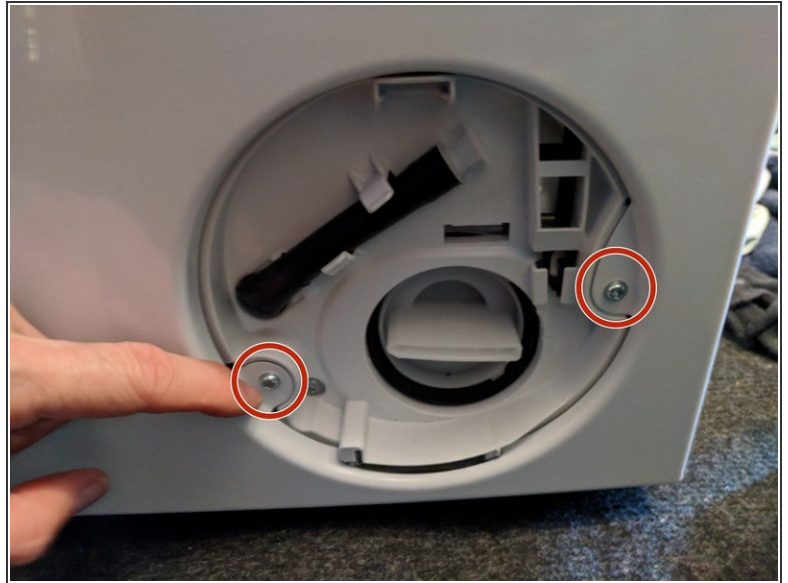
## Step 7 — Detach door seal from front cover



- The rubber door seal is attached to the front cover by a metal wire and a spring.
- Pry out the spring and pull away the wire.
- Unpeel the seal all the way round, and tuck it inside.



## Step 8 — Remove drain/filter door, drain water, and unscrew



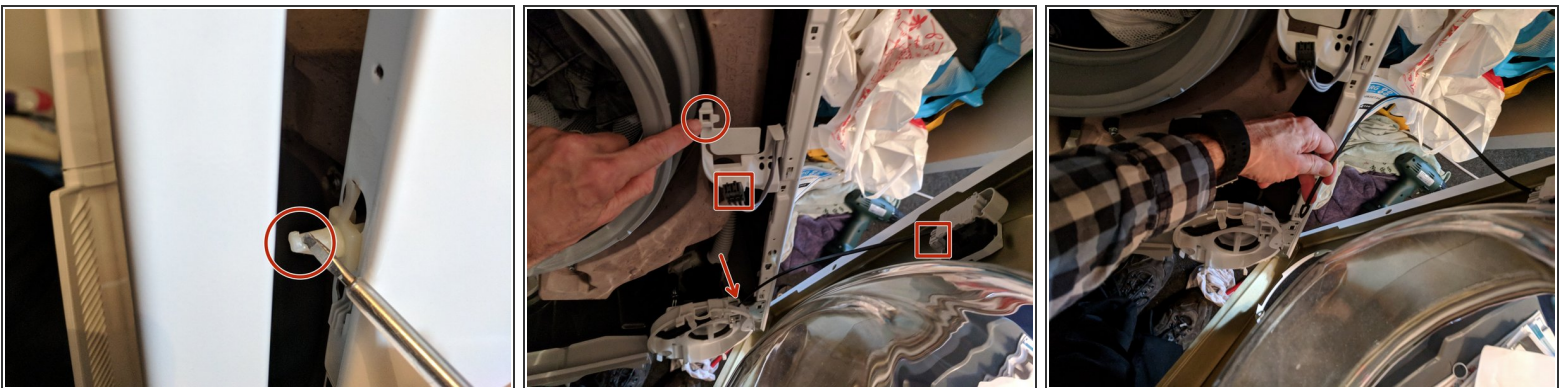
- The round door (front bottom right) for the drain tube and filter can be removed, by opening it completely, and gently pulling out the left side of the hinge.
- **DRAIN ANY REMAINING WATER.**
- Unscrew two T20 screws.

## Step 9 — Unscrew front cover



- Unscrew two (T20) screws at the top.
- Tilt the whole washing machine towards its rear side to expose the front bottom. Lean it against a wall.
- Unscrew two (6mm hex-head) screws on the bottom.

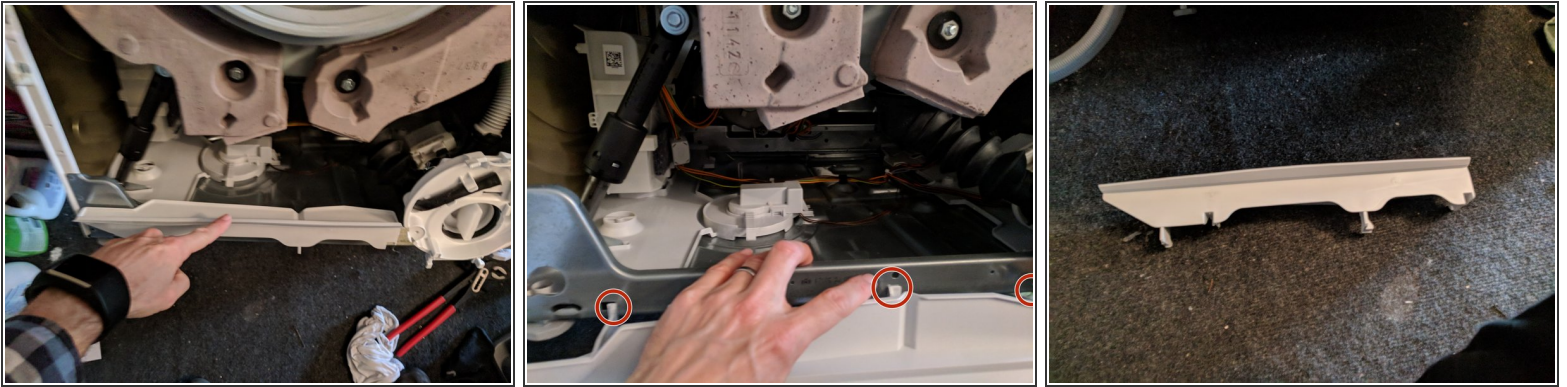
## Step 10 — Remove front cover



- The front cover is held in place by plastic hooked pins. Slightly lift the front cover to unhook it.
- On the inside, unclip something, and pull out a connector (for the door lock). The plastic emergency door release comes out easily. The image shows this when clip and connector are already disconnected.
- **DO NOT FORGET TO PUT ALL THIS BACK on reassembly!**

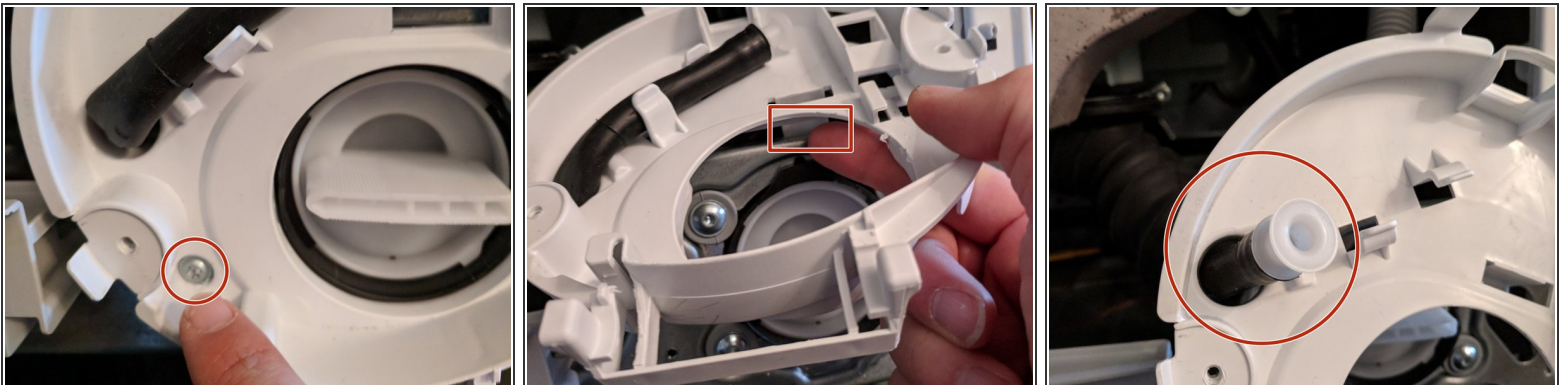


## Step 11 — Remove plastic strip



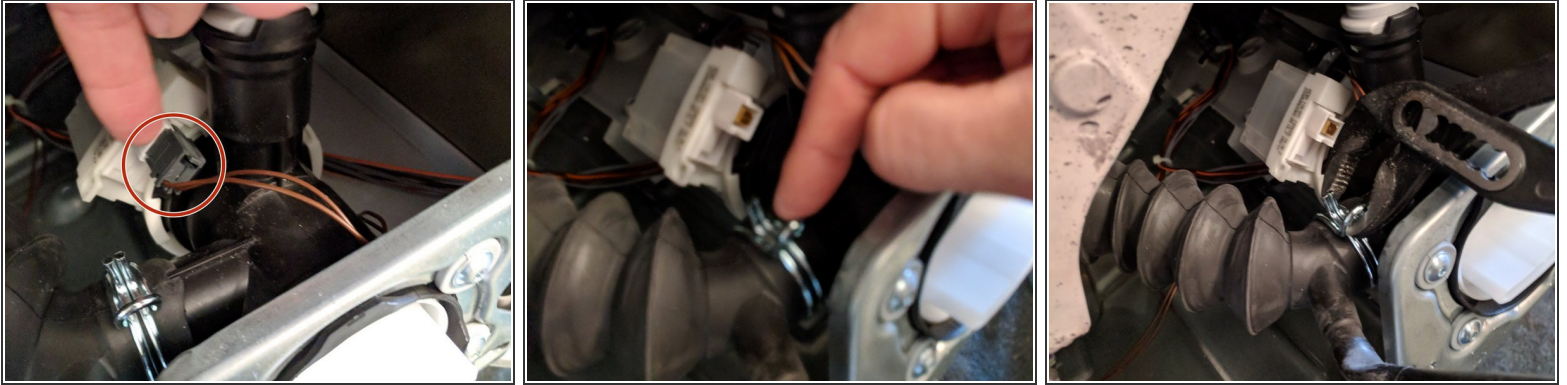
- Remove the plastic strip that protects the bottom edge.
- Unhook on the back, and tilt it forwards.
- Note the guiding notches to help you put it back.

## Step 12 — Remove drain/filter cover plate



- Unscrew one (T20) screw.
- Tilt the plate back, and lift it. There is a hooked tab, and a guiding pin to help you reassemble the plate.
- Pull out the drain tube.
- Put the cover plate aside.

## Step 13 — Disconnect pump



- Pull the power connector from the pump.
- Using pliers, loosen the clamp on the hose from the tumbler and slide it back.
- Remove the hose.
- BE PREPARED FOR SOME WATER (use a towel or bowl).

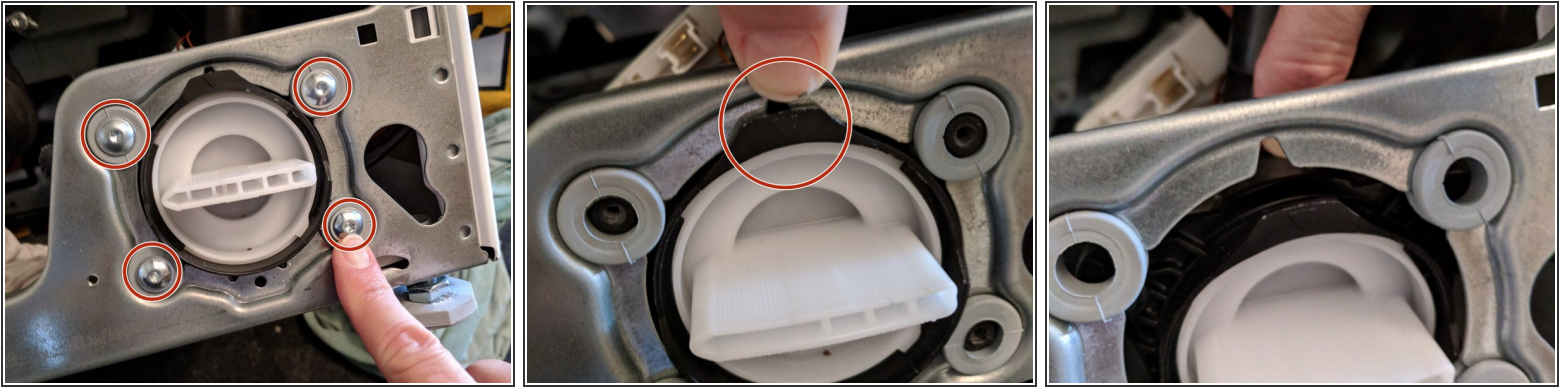
## Step 14 — Remove debris



- In my case, the pump inlet (where we just removed the hose coming from the tumbler) was clogged with debris and some cloth.
- This prevented draining, and even prevented removal of the filter. Thus, requiring disassembly. But we are not done yet.



## Step 15 — Detach filter/pump unit



- Unscrew four T2 screws.
- Tilt the filter/pump unit (note the tab at the top), and pull it out from the back.

## Step 16 — Clean inlet, filter, and pump



- At this point you can clean the water inlet, the filter, and the pump. The propeller should move freely. The pump itself can also be removed to replace it (but I did not do that).
- In my case, a significant amount of cloth got stuck in the water inlet, including a necklace. In the filter, there were some hairpins, and inside the pump itself, a coin and a pendant. **LESSON: CLEAN THE FILTER MORE OFTEN**, while you can still remove it without disassembling the machine.

To reassemble your device, follow these instructions in reverse order.