



# Sony Cyber-Shot DSC-W50 SIM Card Replacement

Use this guide to replace the SIM card in your Sony Cyber-shot DSC-W50.

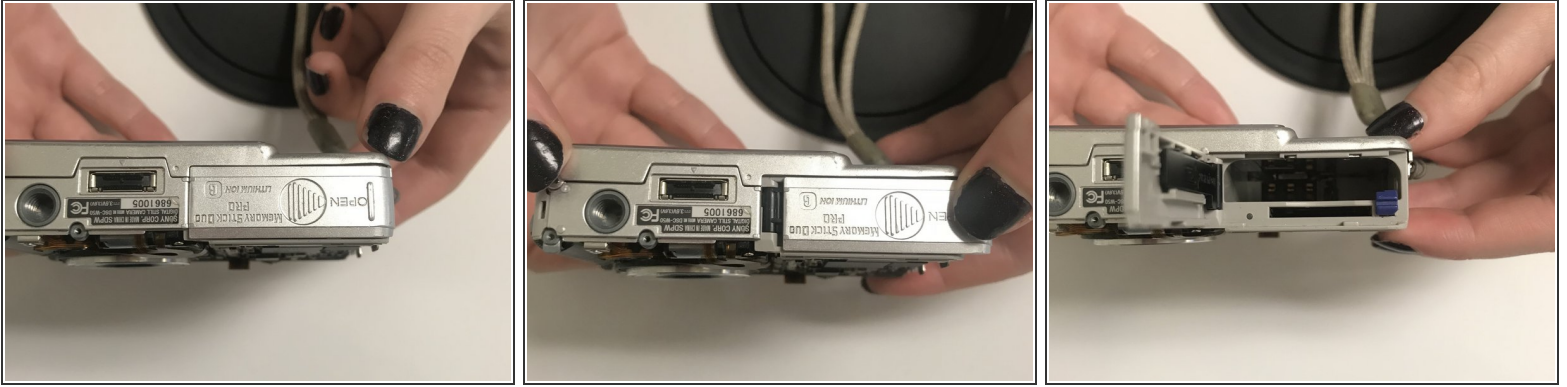
Written By: travis fraser



## INTRODUCTION

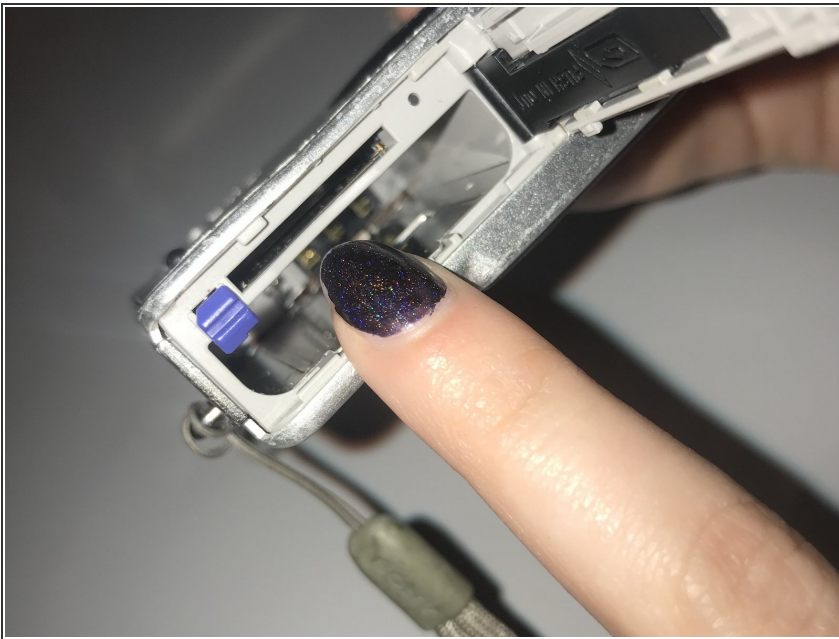
This guide will walk you the process of changing a SIM card in your Sony Cyber-shot DSC-W50.

## Step 1 — SIM card



- Using your finger, slide the cover door in the direction of the arrow.
- Flip the door up to expose the opening for the battery slot.

## Step 2



- Push down on the old SIM card to pop it up out of the slot.
- Replace the old SIM card with the new SIM card by pushing it into the slot.

To reassemble your device, follow these instructions in reverse order.