



# IBM ThinkPad T43 CD Drive Replacement

In this guide, we will remove and replace the CD drive on the IBM ThinkPad T43

Written By: aLiX pleRRe



---

## INTRODUCTION

CD Drives can wear down and stop functioning correctly or stop entirely. This guide will show the user how to remove and replace the CD Drive



### TOOLS:

- [Phillips #0 Screwdriver](#) (1)
-

## Step 1 — CD Drive



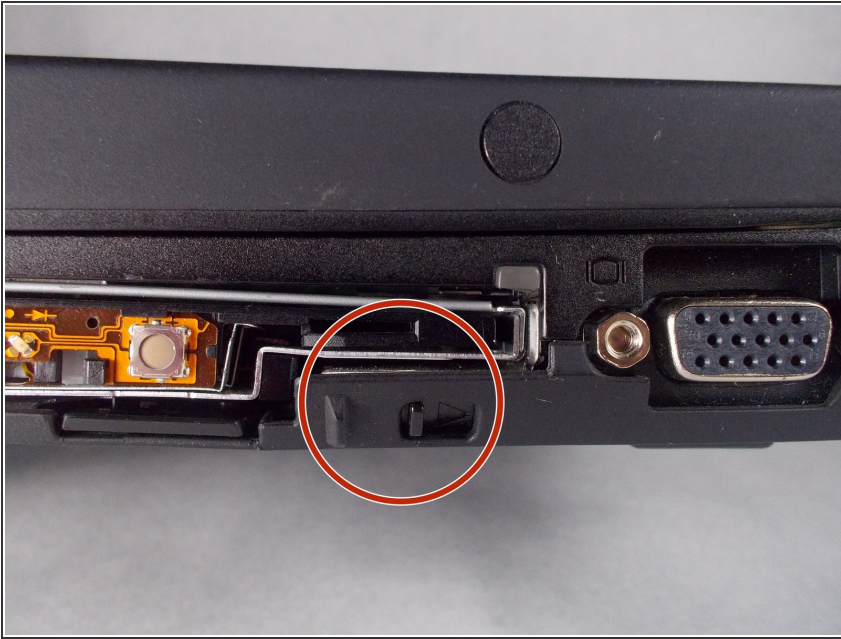
- Start by having the right side of the laptop facing you.
- ⓘ The laptop can be open if you would like, but it can be done easier if it is closed.

## Step 2



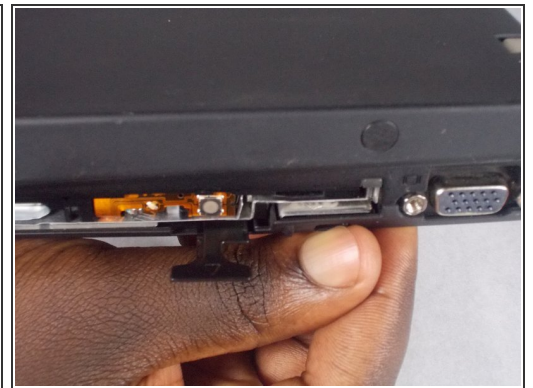
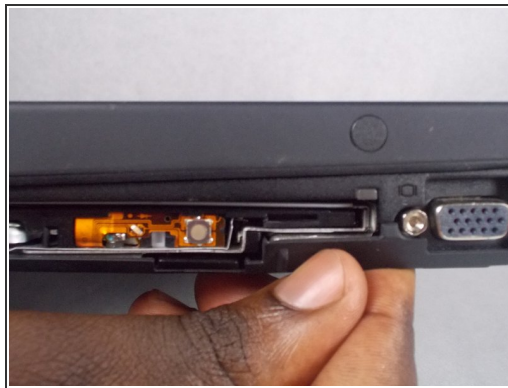
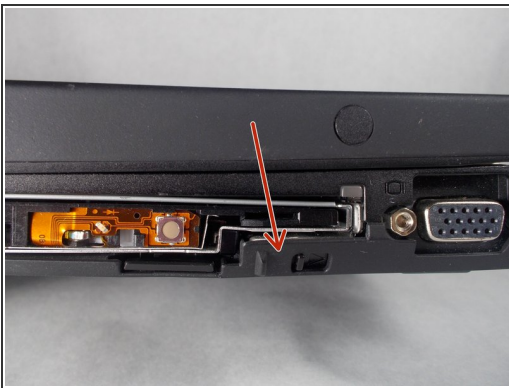
- Remove the screw to be able to use the CD drive unlock switch

### Step 3



- Locate the switch on the right side of the CD Drive.

### Step 4



- Place finger in between the switch and the bumper
- Slide the switch to the right until the plastic tab ejects.

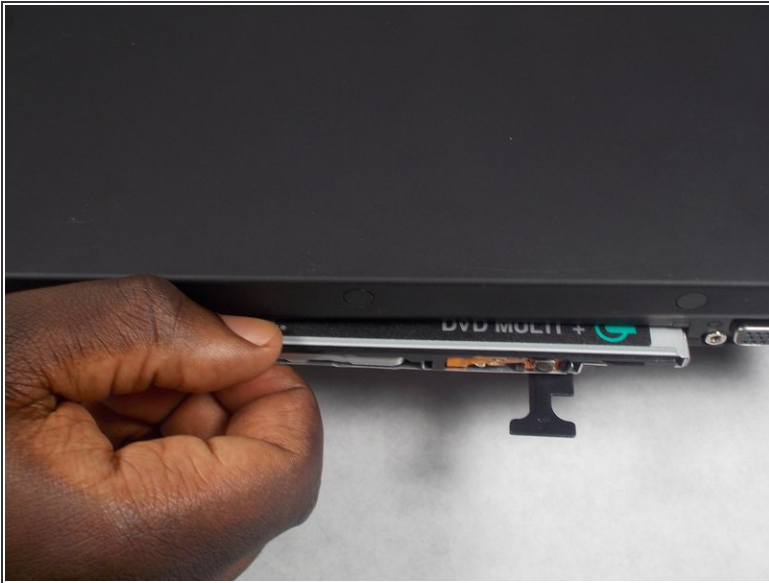


## Step 5



- Place fingers on the plastic tab.
- Pull on the tab until the CD Drive ejects.
- ⓘ The tab only comes out about an inch to inch and a half.
- ⚠ Do not try to pull the tab all the way out.
- ⓘ If after you have removed the CD Drive and the tab goes back in, it is alright. It does not affect the later process.

## Step 6



- Grab the end of the CD Drive and pulls straight out towards your body.

**i** Be careful not to pull it out at an angle to not risk damage.

## Step 7



- Now that you have successfully removed the CD Drive you can put in the new one.
- Place the end of the new CD Drive in and slide in until it clicks.

**!** If you are using slight force and it doesn't go in, it could be jammed. Just take it out and try again.

**i** If you had not already, you can push back in the tab.

To reassemble your device, follow these instructions in reverse order.