



# Xbox One Wifi Card Replacement

Wifi card replacement. Sync button is broken needs wifi card replaced.

Written By: Logan





## TOOLS:

- [Essential Electronics Toolkit](#) (1)
-

## Step 1 — Wifi Card



- Are you having trouble connecting your controllers to your xbox one? In this guide I will be showing you how to replace the wifi card on your console.

## Step 2 — Pulling the side panel



- First start by locating the side of the console with the sync button or USB slot. Then carefully pry the side

panel from the Xbox until it is completely separated.

### Step 3 — Removing sync button brace



- After removing the panel behind the silver sync button remove its brace by using a screw driver to slide it out toward the backside of the Xbox.

### Step 4 — Disconnecting plastic cover



- To disconnect the top it has a series of clips to unhook the first is tricky, you want to start by pushing the piece with the red square back toward the device while simultaneously pulling the part with the circle toward you, lifting it in an upward direction to separate them.

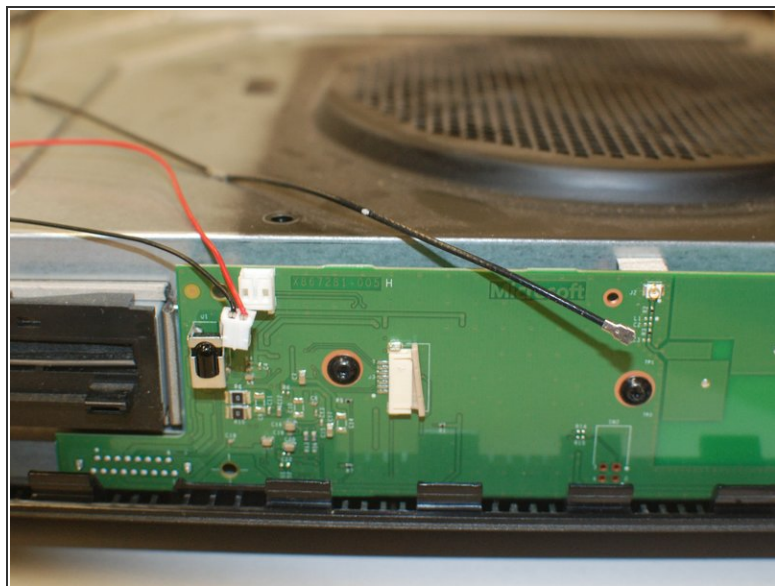
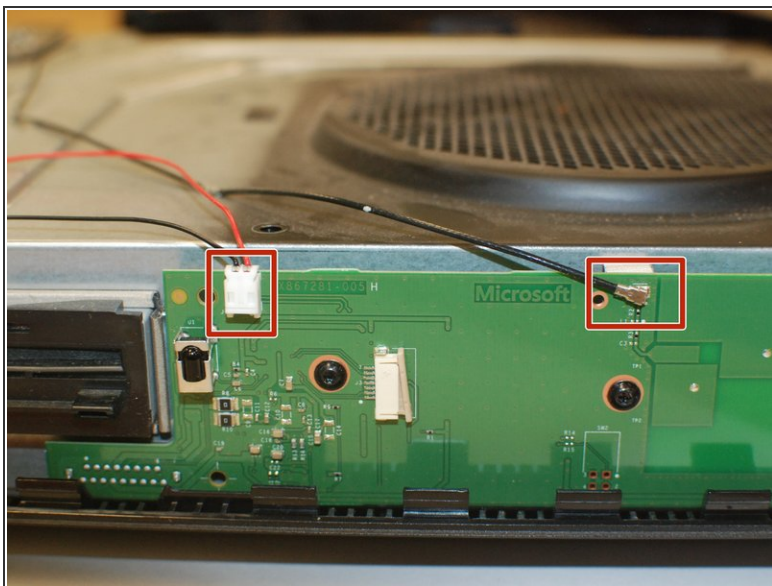


## Step 5 — Plastic cover disassembly



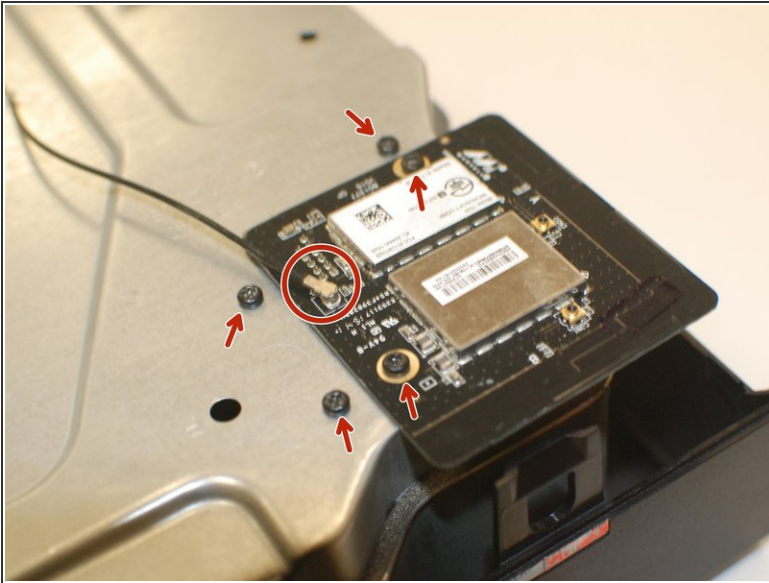
- Now on the backside use a flat screwdriver to pry the back clips straight off to separate the lid. It helps to center the screwdriver in the middle of each clip.
- Now carefully lift the backside of the Xbox without removing the front, disconnect the blue ribbon on the front of the Xbox then remove the lid fully.

## Step 6 — Wire assembly/disassembly



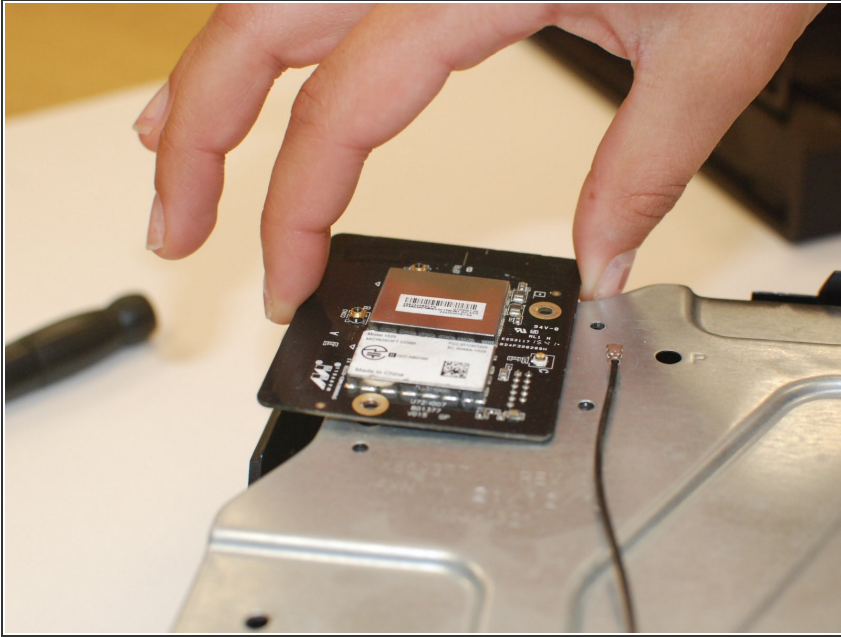
- Now looking at the front of your console lift the white connector straight out of place in an upward motion.
- The black one is a little more different carefully pull outward as if it were a button clip.

## Step 7 — Wifi card wire disassembly



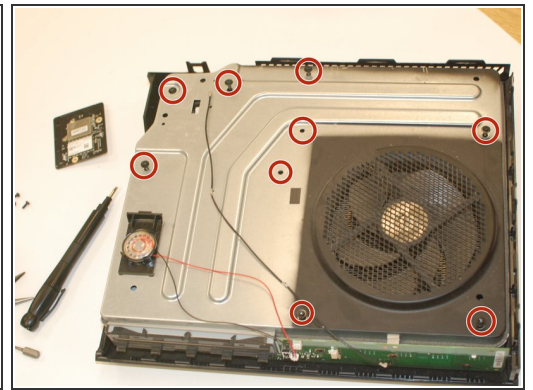
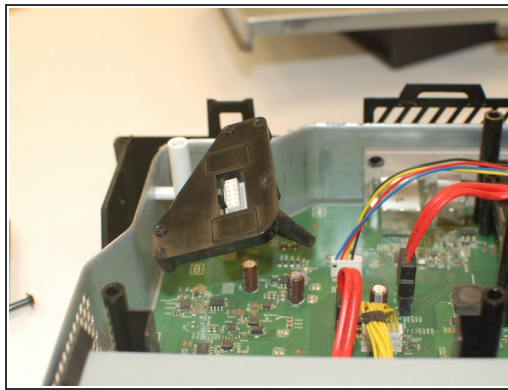
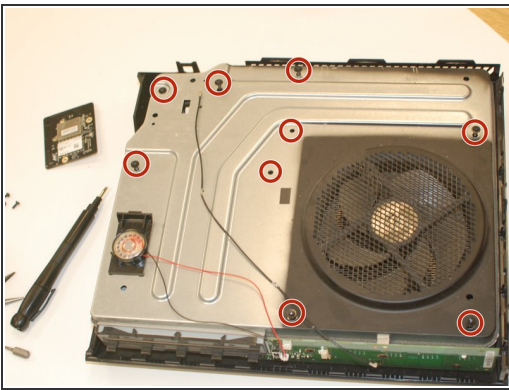
- Just like the last step you're going to want to disconnect the blackwire pulling it in an upward motion.
- Once you've done that unscrew the surrounding screws that are located with arrows pointing at them in the image.
- Great! Once you've done that it should look like the second image.

## Step 8 — Removing wifi card



- Now everything is disconnected from holding the card down you want to carefully pull the card straight up from the console until separated.

## Step 9 — Wifi card reassembly



- Once you've done that you want to go around and unscrew the following bolts to remove the main lid on the console.
- After you've removed the lid right under where the card is placed should be the connector for the card.
- Now hold the black wifi board connector in place with the lid and screw it into the metal lid holding it into place.
- After that go through and screw down the metal lid and tighten all the bolts snug.



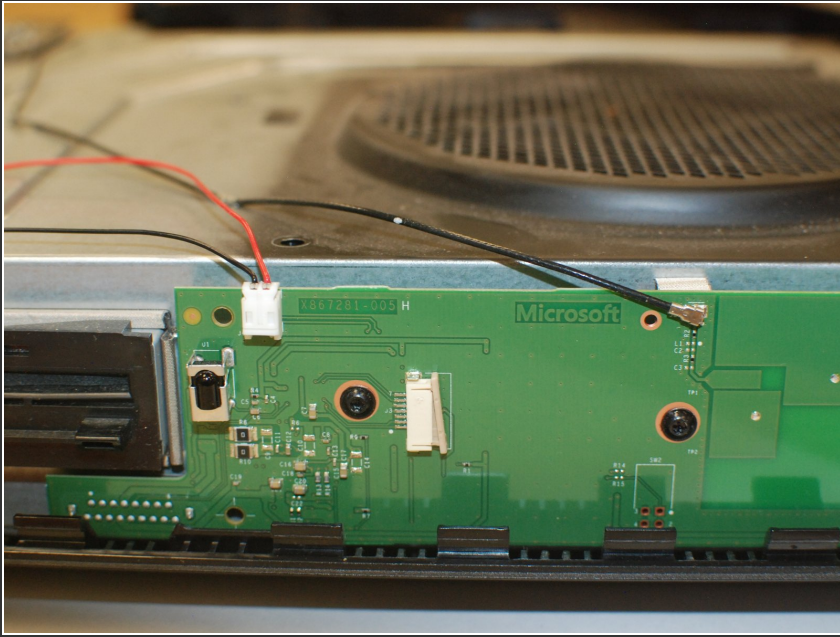
## Step 10 — Continued...



- After you screw in the connector carefully put the new wifi card back into place then screw the wifi card down to secure it.
- Once you've screwed it all into place hook the black wire back up to the new wifi card by snapping it back onto the board, just push it down until it clicks.

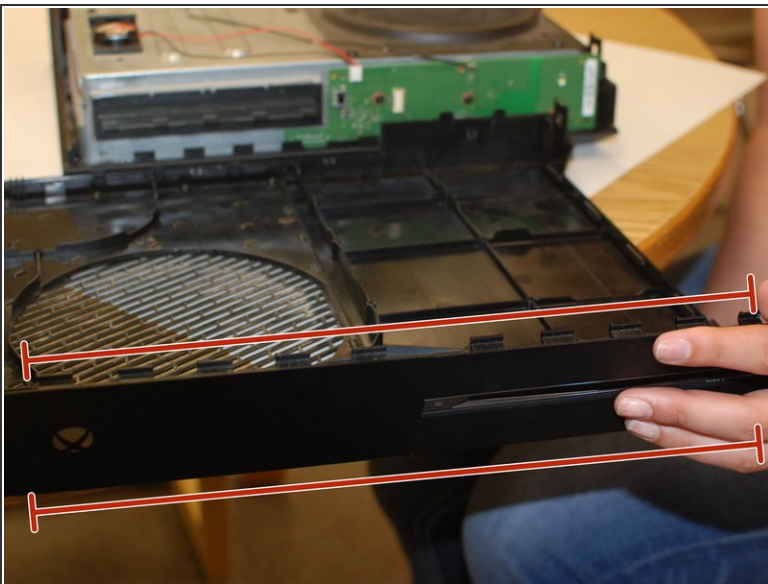


## Step 11



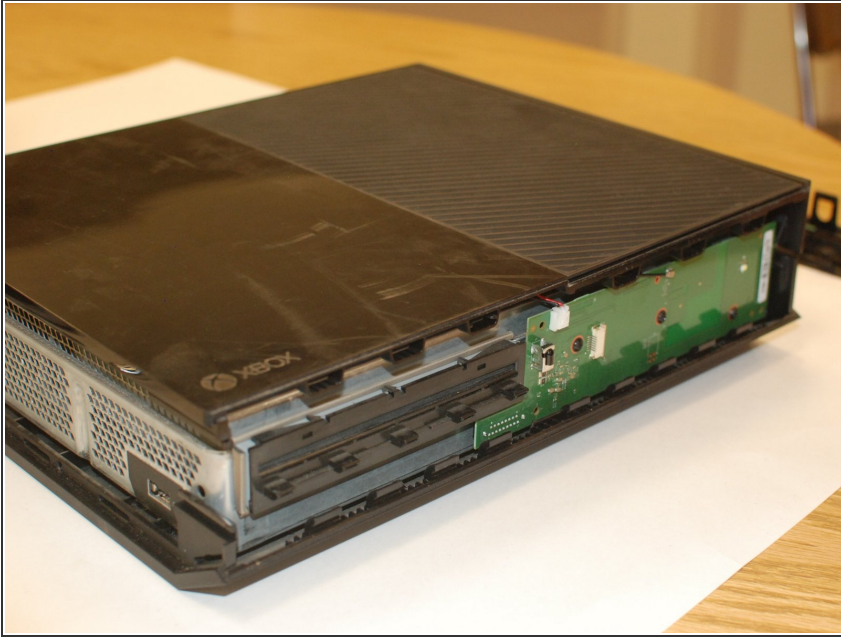
- Now make your way back to the front and connect the front wires the white one should slide down and clip into place and the black will snap down.

## Step 12 — Plastic lid Assembly



- Now for reassembly.
- First things we are going to take the front off the top plastic panel.
- To disconnect this piece you must simultaneously lift all the following clips then tilt the piece outward and away and it should come free; this ones tricky and may take a helping had.

## Step 13 — Continued...



- Now take the top panel and clip it back into place it should all snap down.
- When reassembling the front make sure you hook the blue ribbon back into place first then slide the bottom in first on the panel; after that push the clips until they snap and it is slipped in tight.

## Step 14 — Sync button brace assembly



- Now take the brace for the sync button and slide it back in on the track once you've done that your sync button should click repeatedly, if not try it again.
- Just about there, for your last step shown in picture two, take the side panel and clip into place until all clips are snug and snapped in; once you've completed that you have finished replacing your wifi card and reassembling your console.

To reassemble your device, follow these instructions in reverse order.