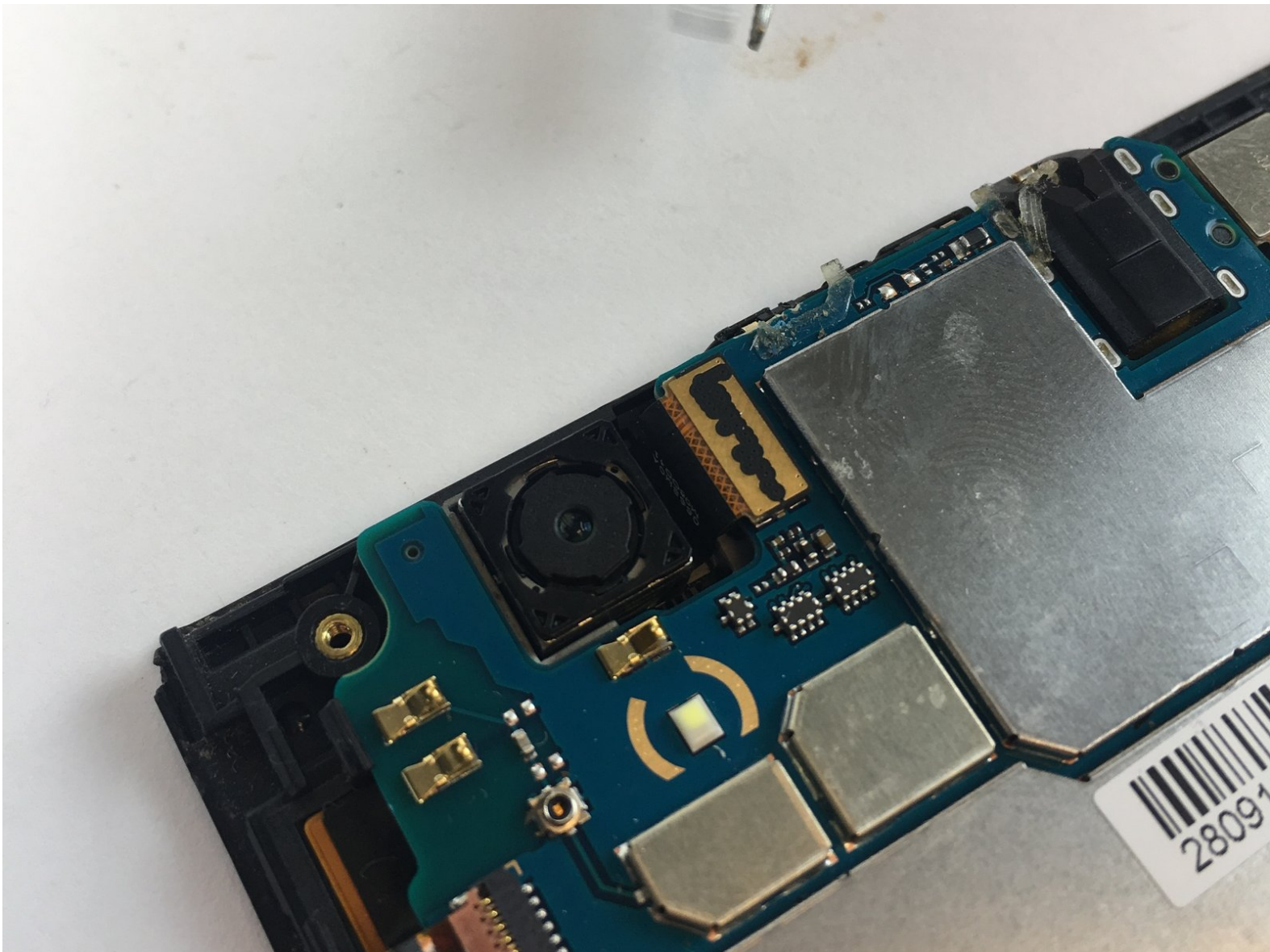




ZTE ZMAX Z970 Rear Camera Replacement

Disconnecting and removing the rear camera of the ZTE ZMAX Z970 for replacement.

Written By: Burak Cengiz



INTRODUCTION

This guide will show you how to replace the rear camera on your ZTE ZMAX Z970 smartphone.



TOOLS:

- [Tweezers](#) (1)
 - [Spudger](#) (1)
 - [Phillips PH000 Screwdriver](#) (1)
 - [iFixit Opening Tools](#) (1)
-

Step 1 — Battery



- Insert a fine point tool into the hole on the top left side of the phone to remove the SIM and SD card trays.
- Pull out the trays.

Step 2



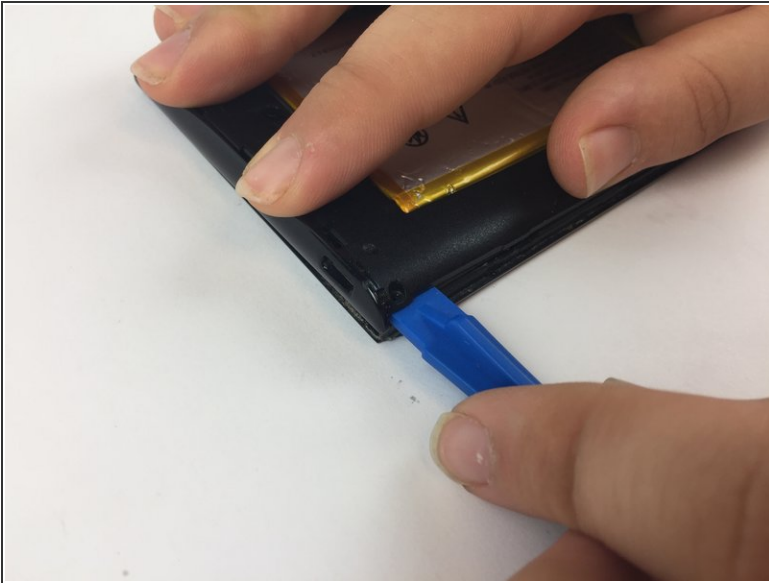
- Insert a plastic opening tool into the groove between the phone's back cover and casing.
- Move the plastic opening tool along the edges of the phone to unclip the two pieces.

Step 3



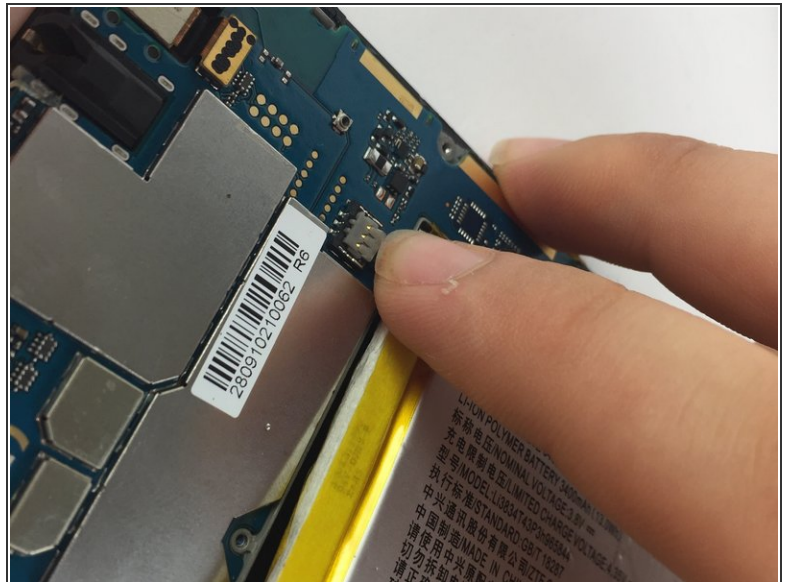
- Remove the ten 1.2mm screws with a Phillips #000 screwdriver.

Step 4



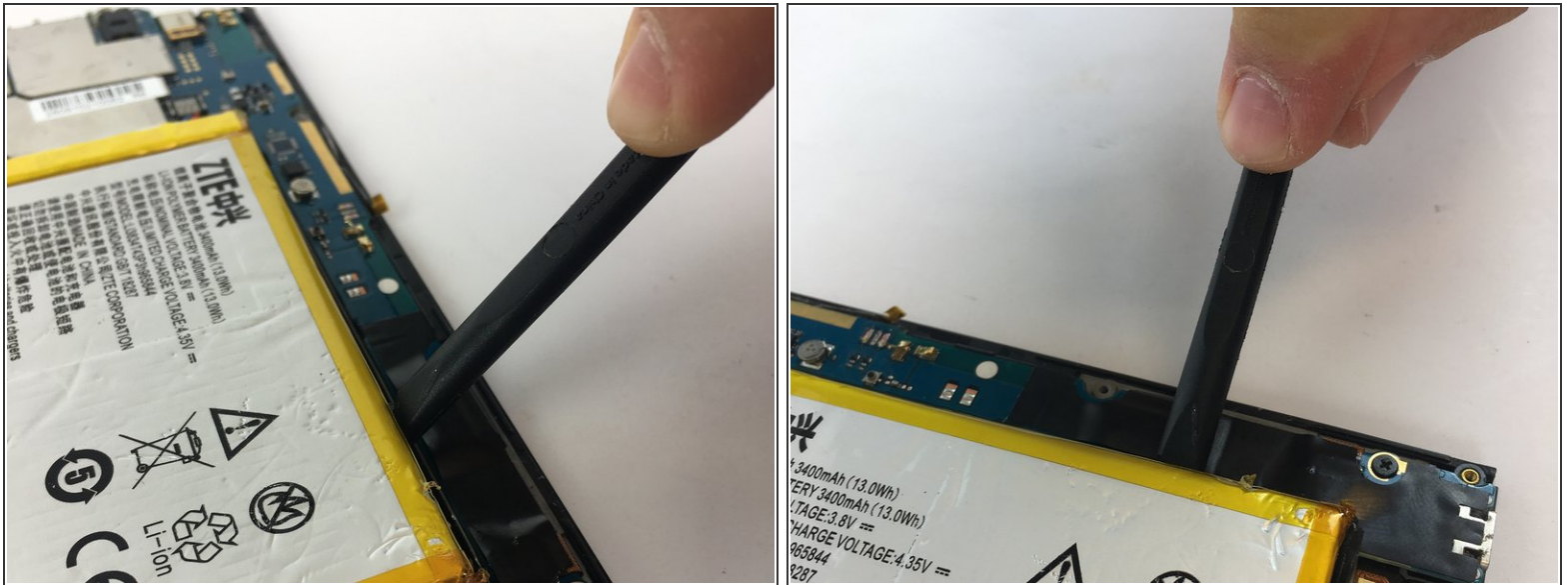
- Remove the mid frame with the plastic opening tool.

Step 5



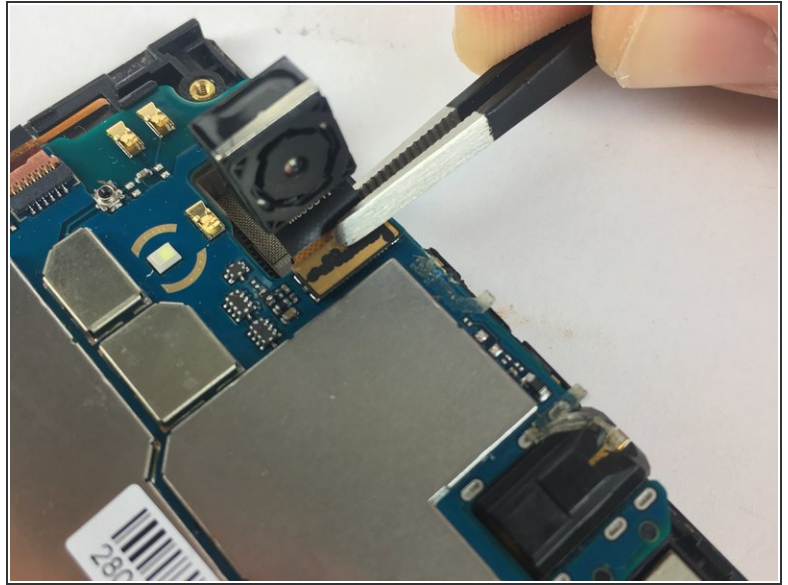
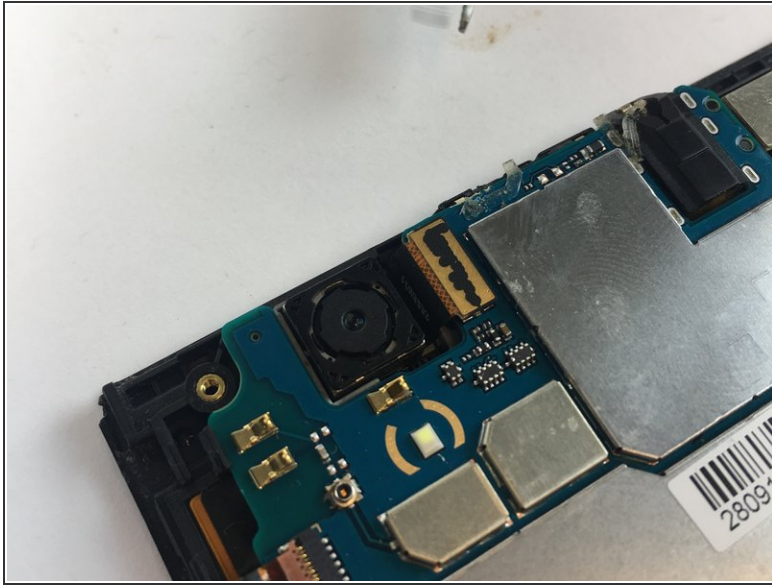
- Disconnect the battery from the motherboard.

Step 6



- Wedge a spudger underneath the battery and gently pry upwards to remove the battery.
 - Once free from the glue, remove from device.
- ⚠ The glue holding down the battery is strong so work slow and cautiously to avoid starting a fire.

Step 7 — Rear Camera



- Disconnect the camera from the motherboard with the flat end of a spudger.
- Remove carefully with tweezers.

To reassemble your device, follow these instructions in reverse order.