



# Nikon Coolpix S4000 Lense Casing Replacement

Replace your cracked or broken lense casing.

Written By: Matina Newsom



---

## INTRODUCTION

This casing not only protects the lense, but acts as the decorative silver plastic running around the side of the camera, and holds the buttons on top.

It may need replacement in the event a button is broken, or any of the casing is cracked while using the camera.



### TOOLS:

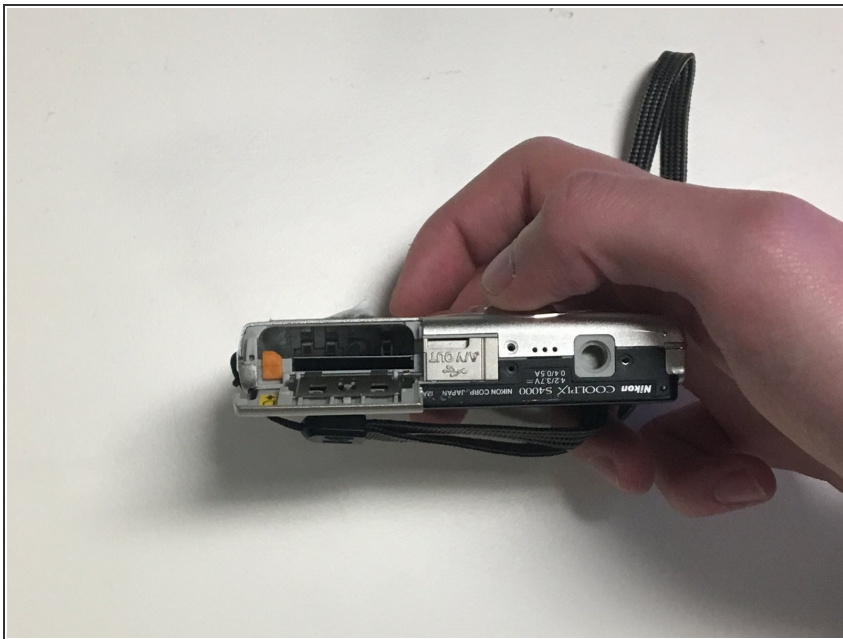
- [Phillips #000 Screwdriver](#) (1)
  - [Spudger](#) (1)
-

## Step 1 — Battery



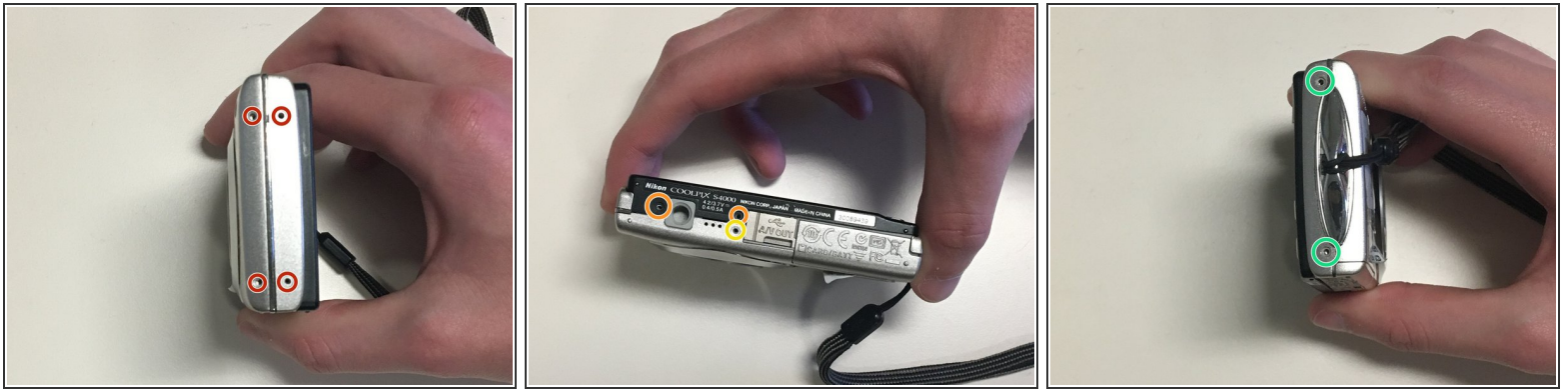
- Slide the battery door open with a finger or thumb and release it so the door opens.

## Step 2



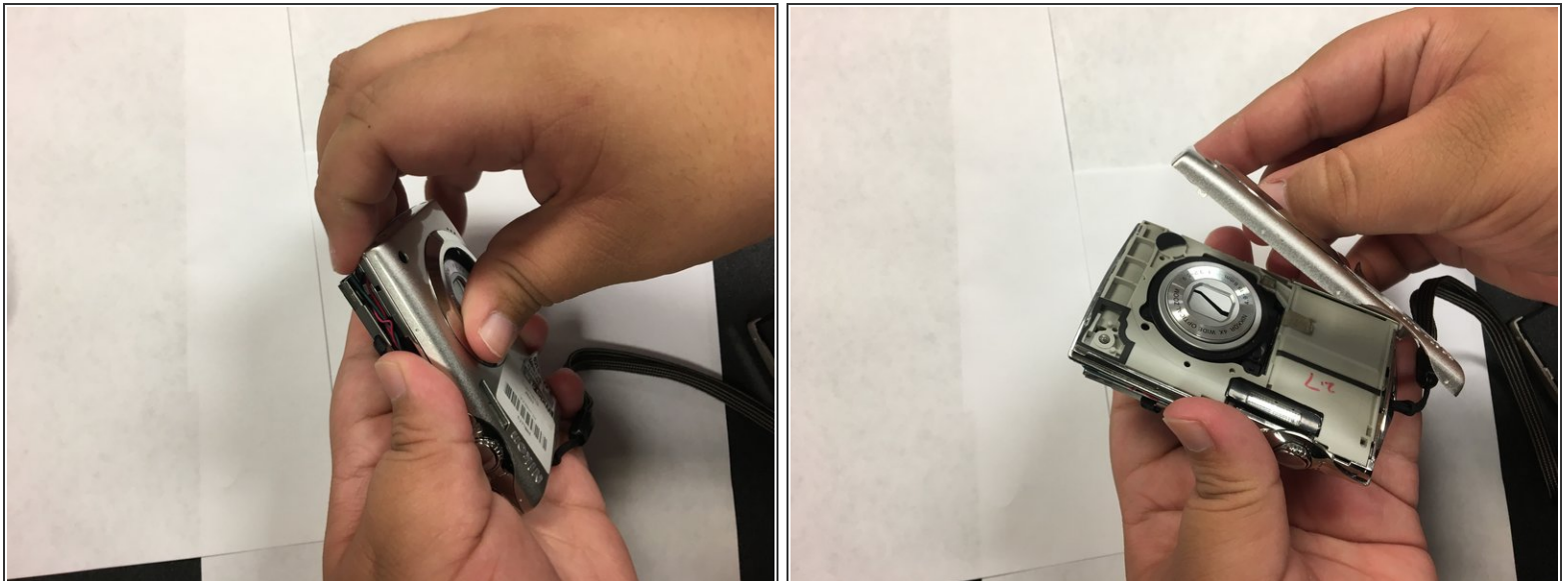
- Push the orange tab back and the battery will pop out.

## Step 3 — Casing



- Remove four 2mm Phillips #000 screws.
- Remove two black 3mm Phillips #000 screws.
- Remove one 4mm Phillips #000 screws.
- Remove two silver 3mm Phillips #000 screws.

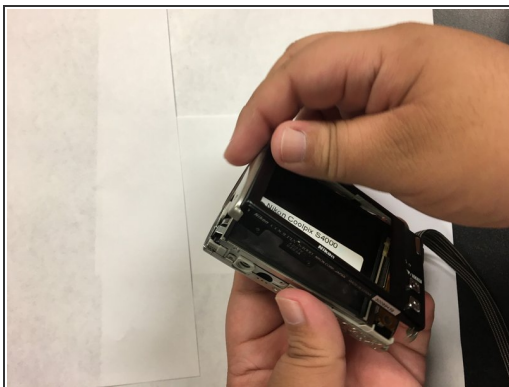
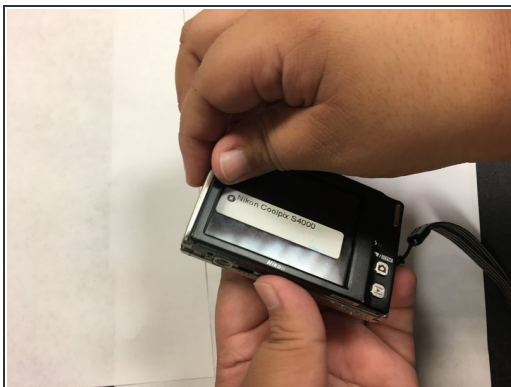
## Step 4



- Use your fingers, or a spudger, to lift up one end of the casing and then pry the two pieces apart.



## Step 5



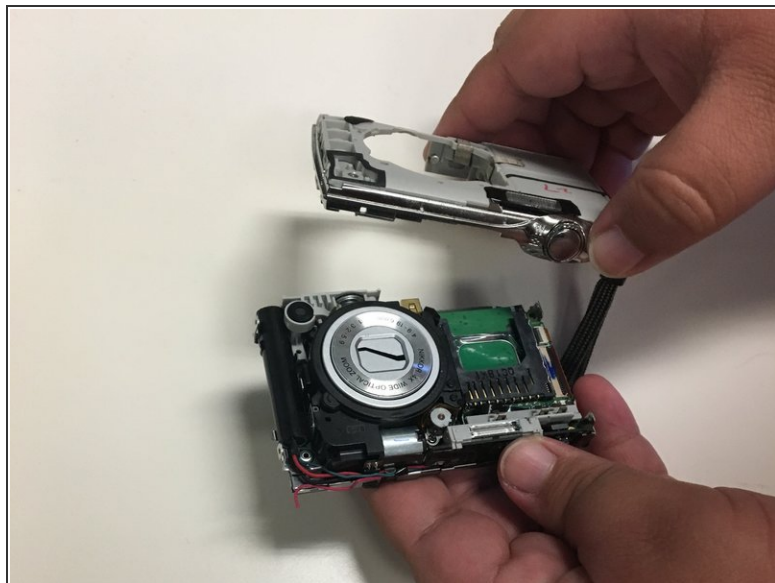
- Turn the camera over.
- Use your fingers, or spudger, to lift one end of the back casing and pry it apart from back of the camera.

## Step 6 — Lens Casing



- Remove the single 3mm Phillips #000 screw from the back of the camera.

## Step 7



- Turn the camera over and pry the lens casing off by slipping your fingers, or spudger, under the lip of the casing.
- Desolder the two wires connecting the casing to the motherboard.

⚠ Work carefully so that you do not break the soldered wires.

To reassemble your device, follow these instructions in reverse order.