



# HP 15-R263DX USB Port Replacement

This guide will show the simple process of replacing the USB ports should they become faulty.

Written By: Drake Hort



## INTRODUCTION

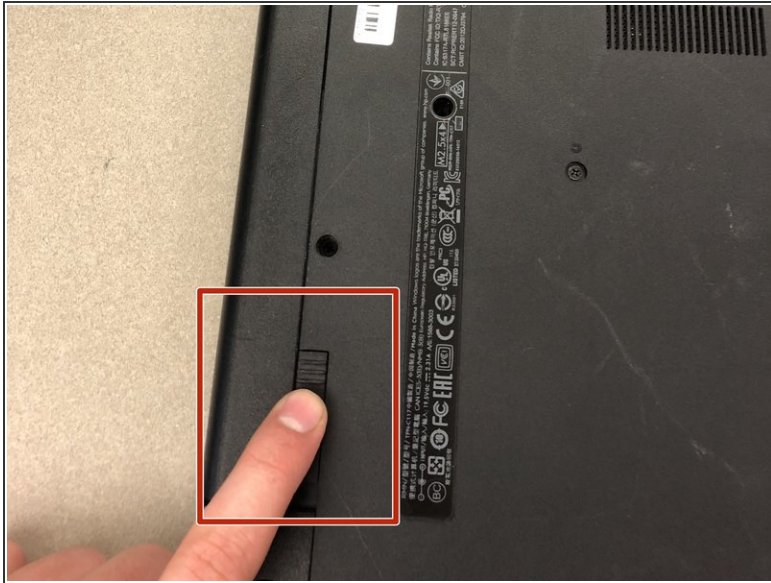
A USB port can be diagnosed as faulty when the computer no longer detects when a device is connected via USB. Ensure the USB connections are free of debris before declaring the port as faulty.

---

### TOOLS:

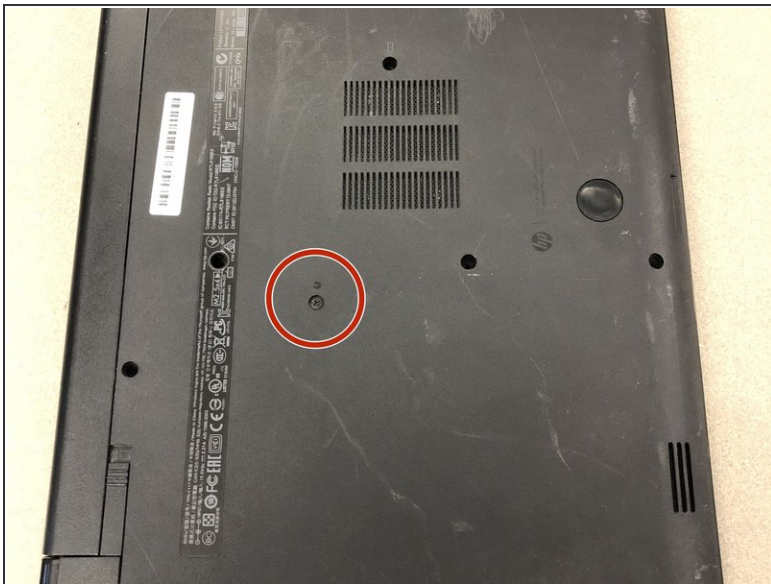
- [Phillips #1 Screwdriver](#) (1)
  - [Metal Spudger](#) (1)
  - [Spudger](#) (1)
-

## Step 1 — Battery



- Eject the battery from the computer by sliding the two clips on the bottom of the computer toward the center of the computer.
- Slide the battery out as shown in the picture.

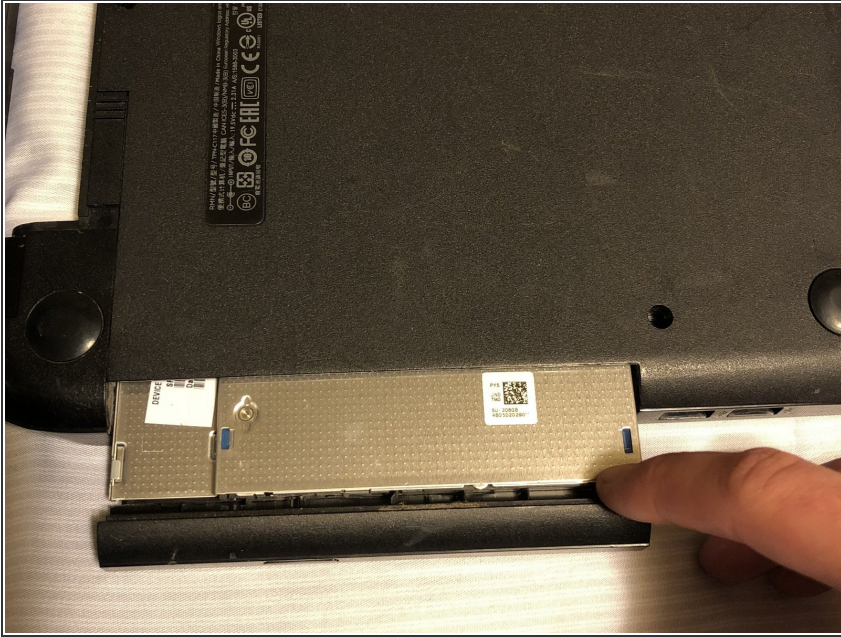
## Step 2 — Optical Drive



- Using a Phillips #1 screwdriver, remove the small screw next to the disc engraving shown in the picture.



### Step 3



- Gently slide the optical drive out of the side of the computer.

### Step 4 — HP 15-R263DX Disassembly



- Locate the two corner grips on the hinge side of the computer.
- Using a metal spudger, remove the two corner grips to reveal the screws.

## Step 5



- Remove the 11 small screws on the bottom of the computer that are shown in the picture.

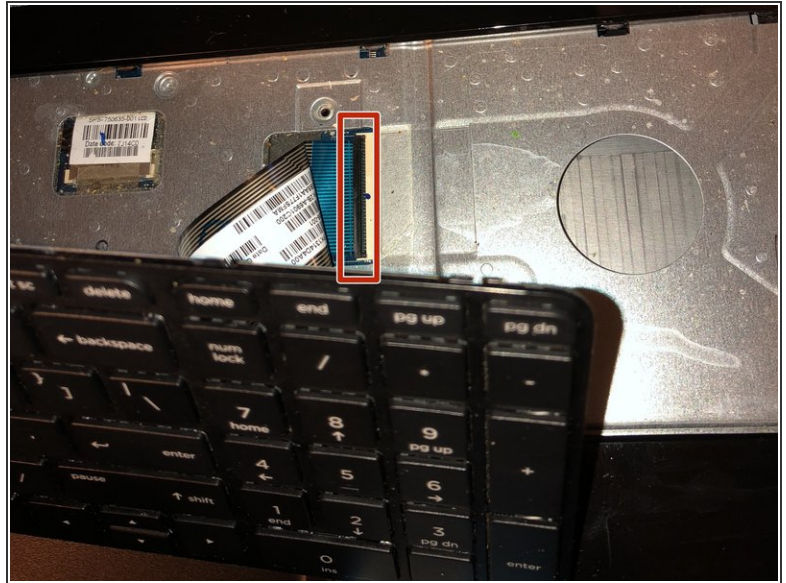
## Step 6




- Remove the 2 small screws that are on the bottom side of the disc tray slot.
- ⓘ These screws are shorter and wider than the others.



## Step 7



 Once the keyboard is loose, do not immediately pull away from computer. It is attached by the ribbon connector.

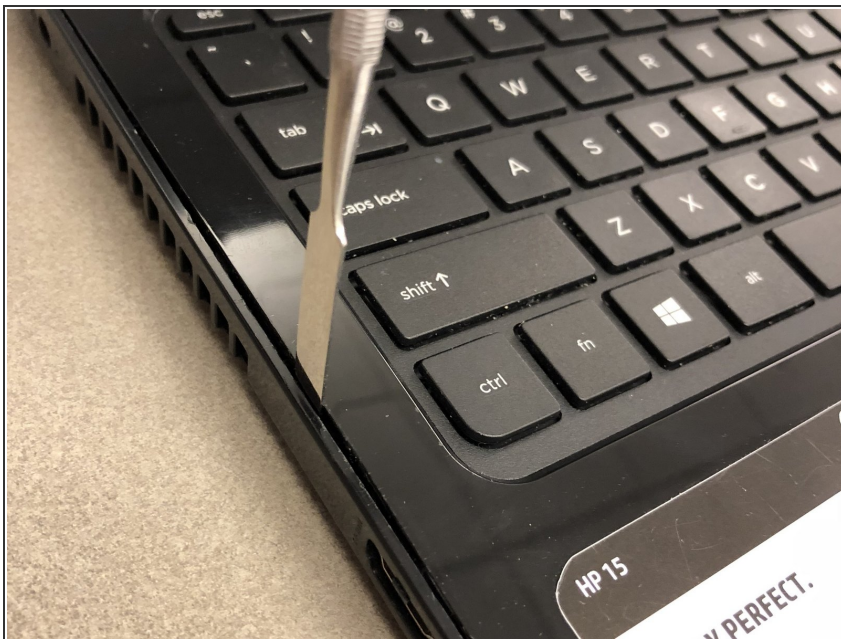
- Using a spudger, pry around the edges of the keyboard until all clips are disengaged and the keyboard is loose from the computer.
- To disconnect the ribbon connector, flip up the black clip shown in the picture.
- Gently pull the ribbon until disconnected.

## Step 8



- Disconnect the other two ribbon connectors underneath the keyboard by flipping up the black clips.
- Remove the 4 small screws shown in the picture.

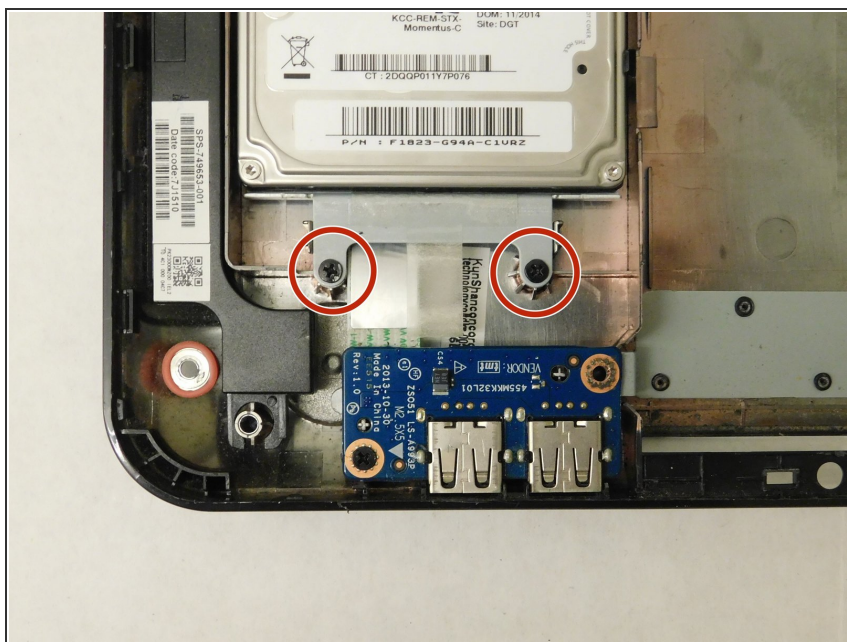
## Step 9



- Disengage the face plate clips by prying the case away from around the outer edge of the face plate with a metal wedge.
- The face plate can then be lifted away from the computer.

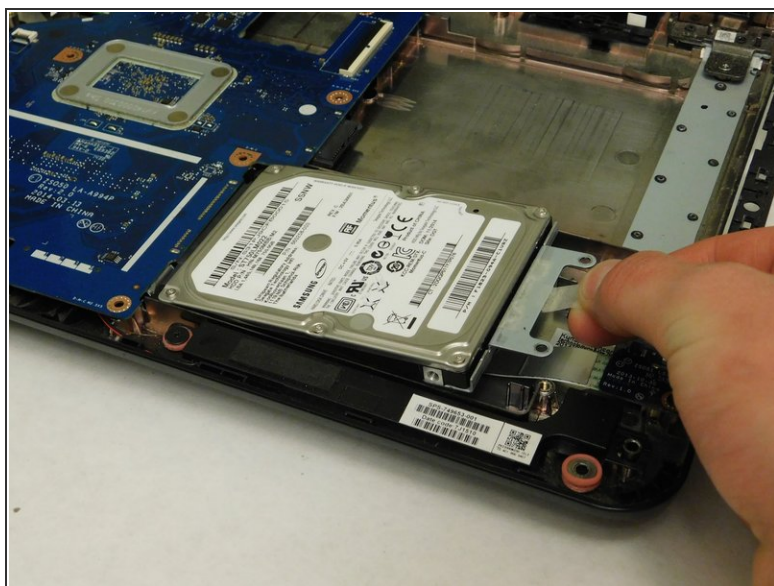


## Step 10 — Hard Drive



- Remove the 2 black screws holding the hard drive to the computer frame.

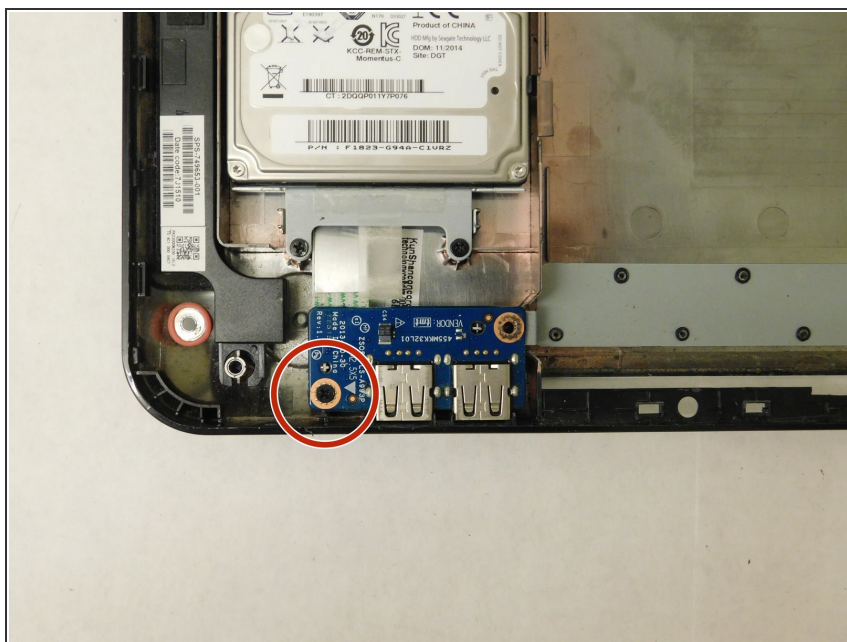
## Step 11



- Gently slide the hard drive away from the motherboard to disconnect it.
- After it's disconnected, lift the hard drive up to remove it from the computer.



## Step 12 — USB Port



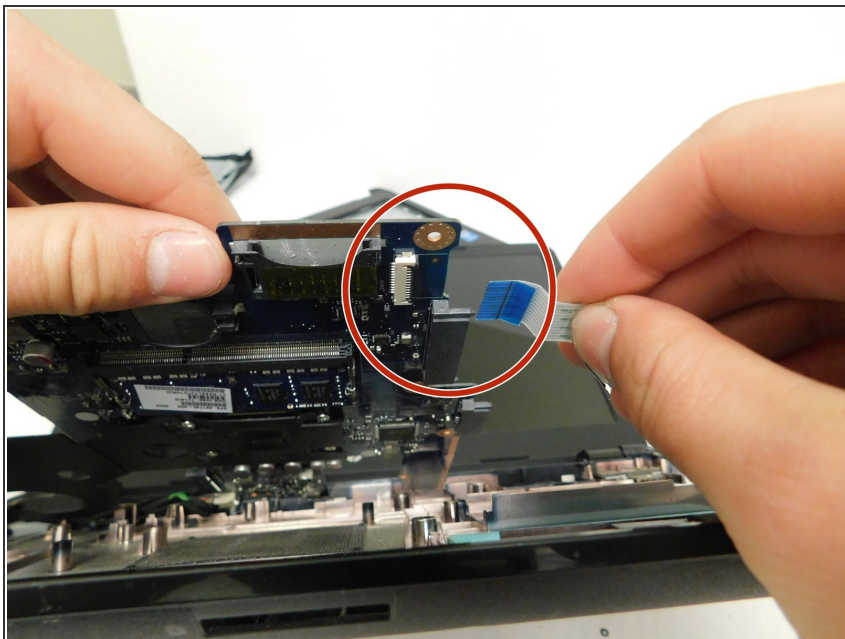
- Remove the single screw holding the USB ports and chip into the computer.

## Step 13



- Remove the chip by gently pulling it up and then away from the edge of the case.

## Step 14



- Under the motherboard, disconnect the wire that runs to the USB chip.
- You may need to pull or wedge the wire up from the case as a section of it is glued down.

To reassemble your device, follow these instructions in reverse order.