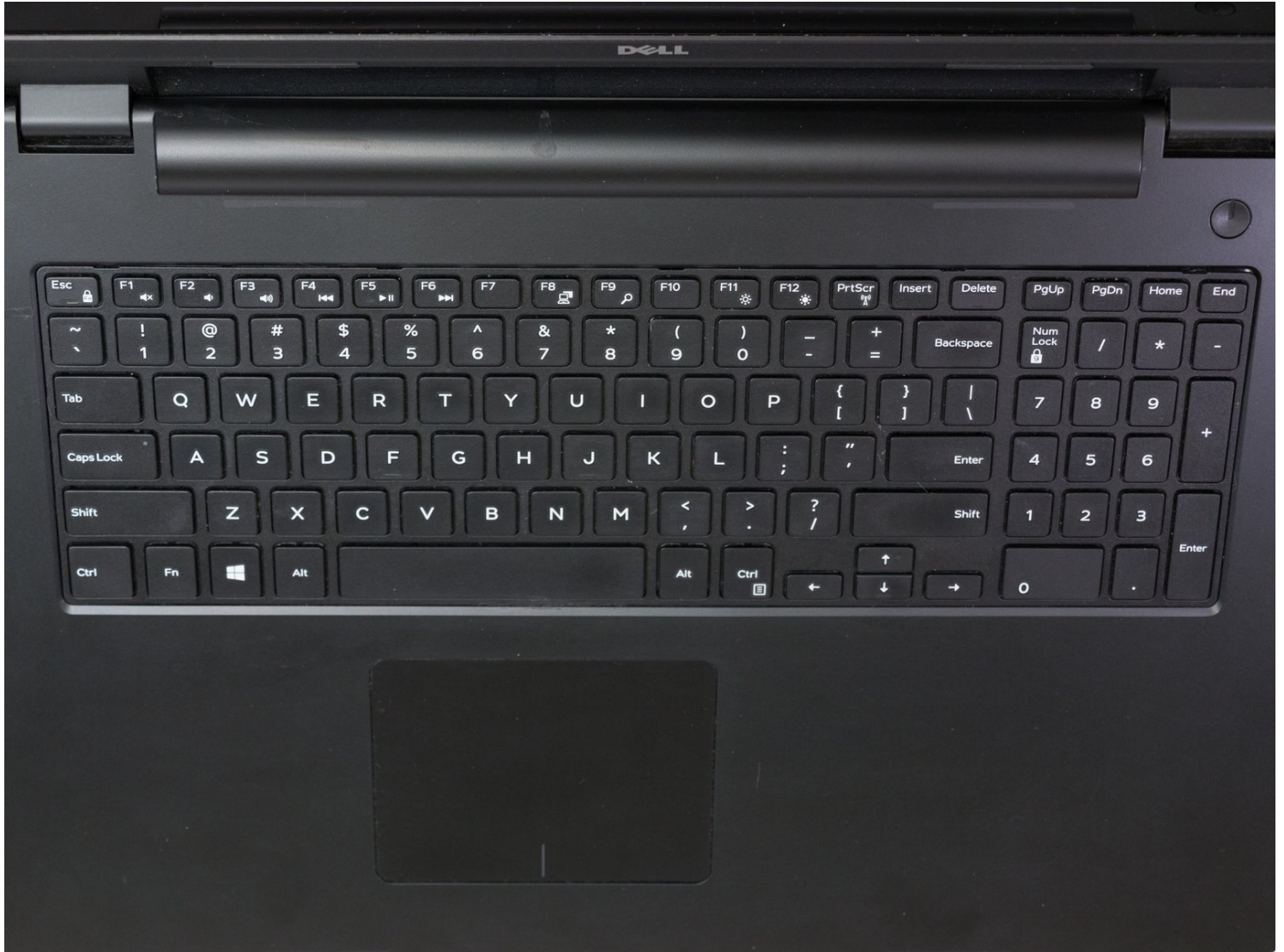




# Dell Inspiron 17-5749 Keyboard Replacement

If your Dell Inspiron 17-5749 keyboard is...

Written By: Christopher Tran



# INTRODUCTION

If your Dell Inspiron 17-5749 keyboard is experiencing issues such as unresponsive keys, sticky buttons, or complete failure, this guide is designed to help you replace the keyboard with ease. Understanding these issues will guide you through the troubleshooting process and confirm that replacing the keyboard is the appropriate solution.

The keyboard is responsible for inputting commands and text into your laptop. A malfunctioning keyboard can disrupt your workflow and hinder the overall usability of your device.

For tips and precautions, follow proper procedures for disconnecting the power source and handling electronic components with ESD-safe tools. Wear an anti-static wrist strap or work in an uncarpeted area to prevent static shocks. The following link will direct you to a guide that provides the skills needed for use of an anti-static wrist strap: [How to set up your Anti-static mat and wristband - iFixit Repair Guide](#).



## TOOLS:

[Phillips #0 Screwdriver](#) (1)  
[iFixit Opening Tool](#) (1)

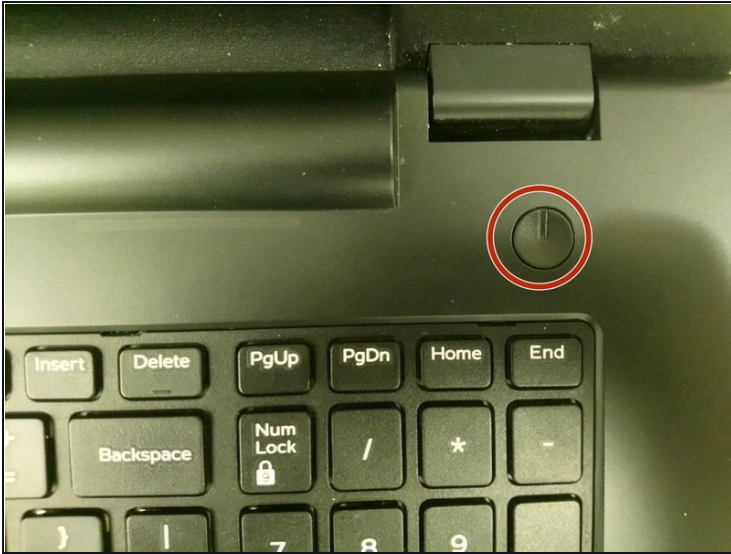


## PARTS:

[Dell Inspiron Keyboard - V9F14](#) (1)  
[Dell Inspiron Keyboard - K8X85](#) (1)

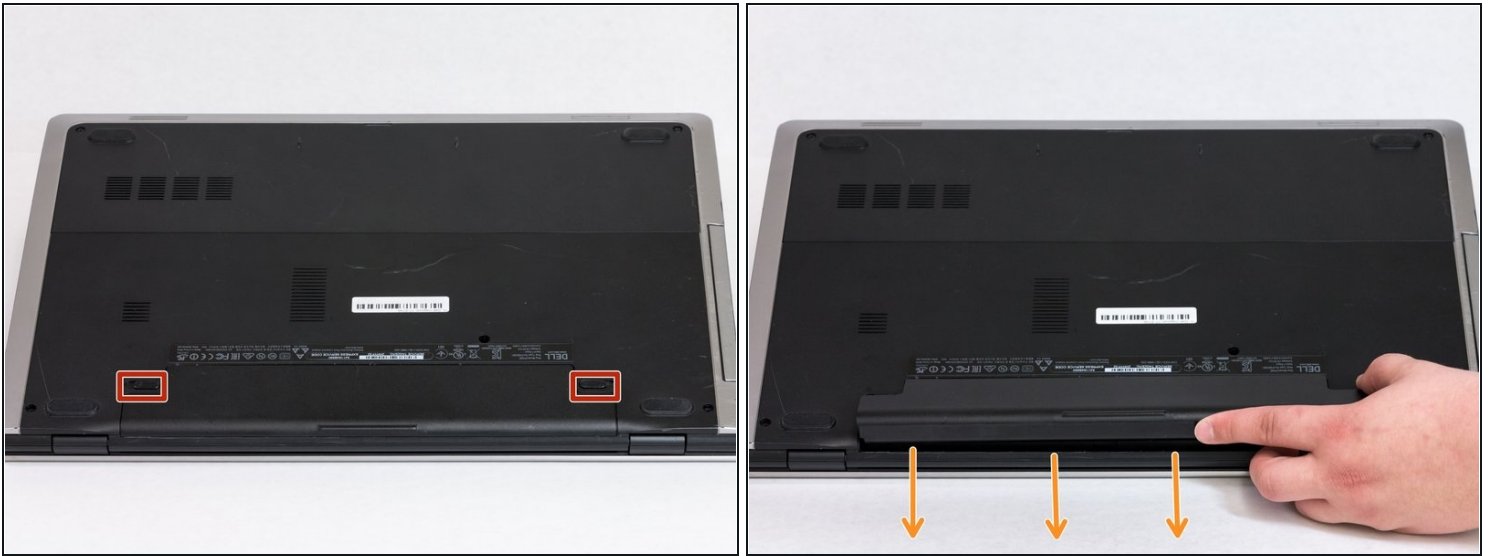
---

## Step 1 — Battery



- Turn off power to the laptop.
- Unplug the charging cable from the laptop.
  - ⚠ Failure to unplug the charging cable could result in damaging the computer or seriously injuring yourself.
- ① Wear the [anti-static wrist strap](#) or work in an uncarpeted area to prevent static shocks. Shocks may damage the components.

## Step 2



① First carefully turn the laptop over so you can access the battery.

- Switch each of the battery latches to the "unlocked" position.
- Pull battery upwards by the tab to remove from the laptop.

## Step 3 — Keyboard

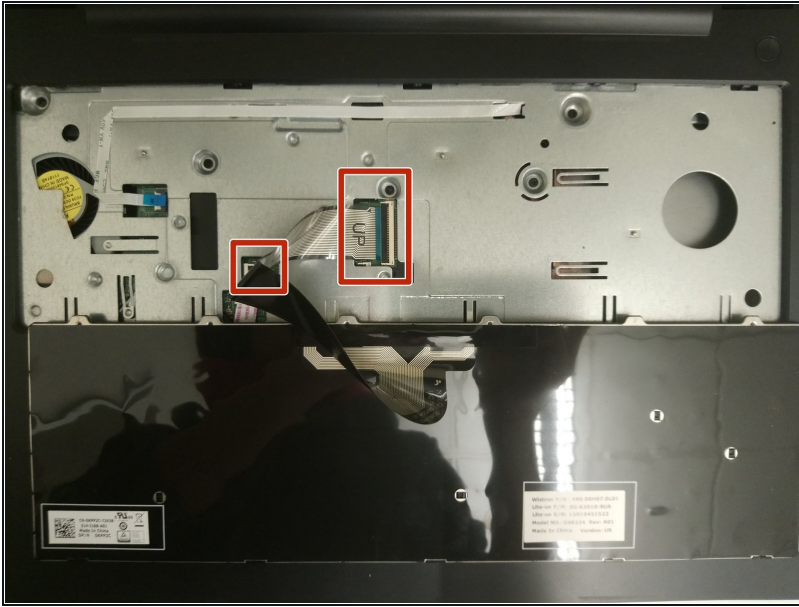


- Turn the computer over and open the display as far as possible
- Using a plastic opening tool, release the tabs that secure the keyboard to the palm-rest assembly.

⚠ Before turning over the keyboard, be careful not to pull the keyboard too far away as it could damage the connected ribbon cables.



## Step 4



- Carefully turn the keyboard over and place it on the palm rest assembly.
- Lift the latches and disconnect the keyboard cable and keyboard back-light cable from the system board.
- Lift the keyboard along with the cables, off the palm-rest assembly and set it aside.

---

To reassemble your device, follow these instructions in reverse order.