



Toshiba Satellite 2430-S255 Hard Drive Replacement

Toshiba Satellite 2430-S255 Hard Drive...

Written By: Stefan Bruendl



INTRODUCTION

Toshiba Satellite 2430-S255 Hard Drive Replacement. Uses Toshiba Satellite 2430-S255 Optical Disc Drive Replacement as a prerequisite guide.

To make sure the hard drive is not properly working and is in need of replacement, refer to be [this troubleshooting guide](#)



TOOLS:

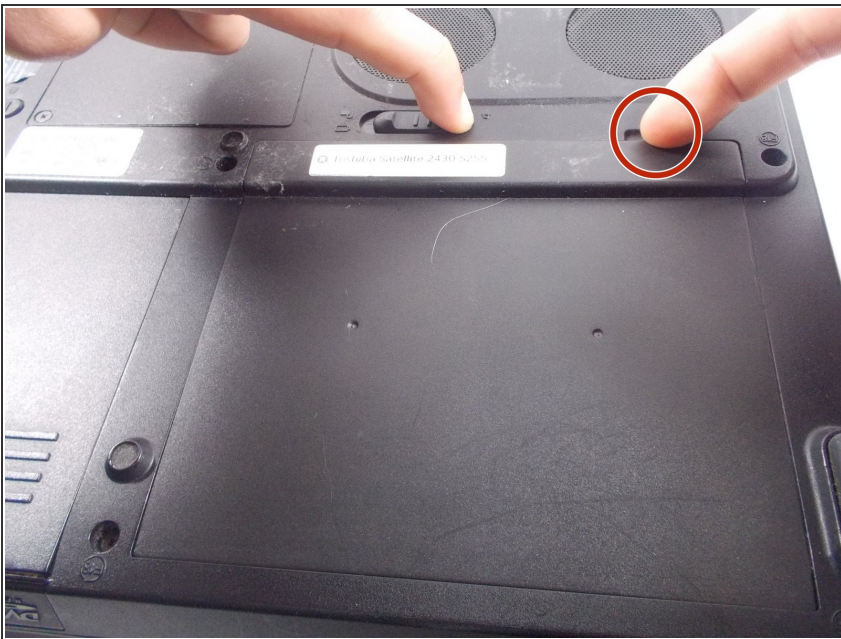
- [Phillips #1 Screwdriver](#) (1)
-

Step 1 — Battery



- Locate the battery locking mechanism on the back side of the laptop. It is labeled with a lock and unlock symbol to indicate its function. The mechanism also has a serrated texture to increase grip.

Step 2



- Place your left hand on the locking mechanism and slide it all the way to the left. This will move it into the unlocked position. While holding the mechanism in the unlocked position place another finger in the cavity to the right of the locking mechanism.

Step 3



- Pulling up with your right hand while the locking mechanism is in the unlocked position will release the battery from its socket.

Step 4 — Optical Disc Drive



- Flip your device on its backside.
- Slide the latch on the bottom left of the backside all the way to the left
- Keep holding the latch in that position and move to the next step.

Step 5



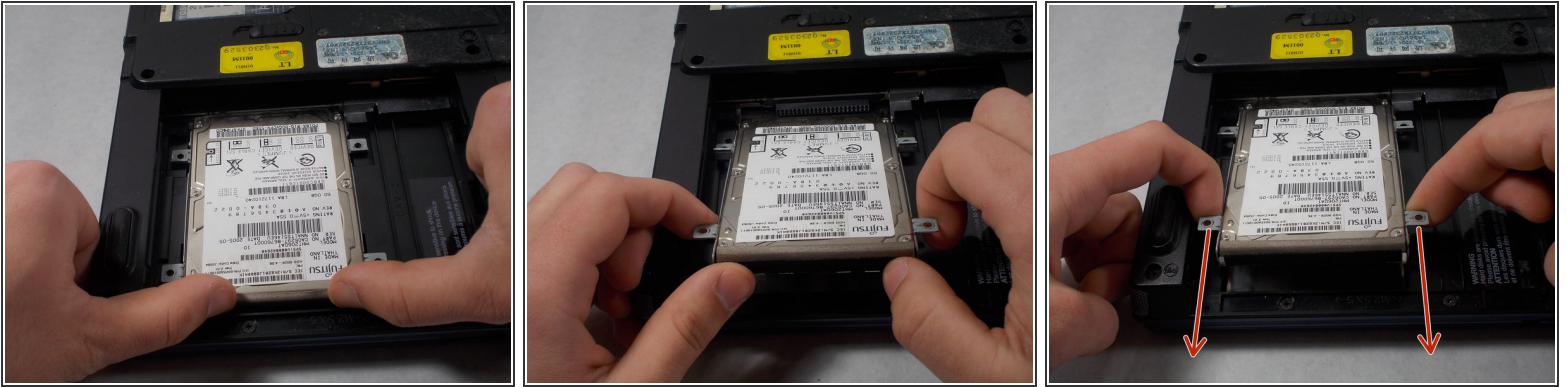
- While holding the latch in place, pull out the Optical Disc Drive towards your body, away from the latch with another hand.
- ⓘ The Drive should move smoothly. If it is not movable, the latch may not be pushed all the way to the left.
- ⓘ The Drive has friction grids to make pulling it away from the latch easier.

Step 6 — Hard Drive



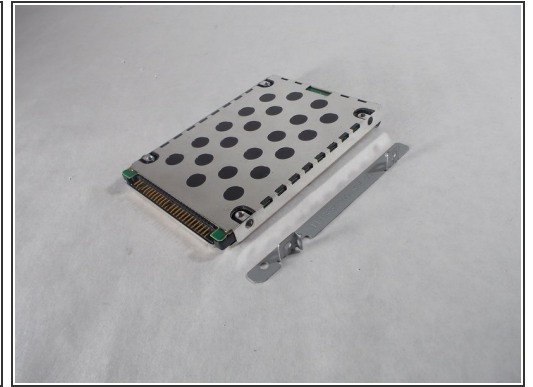
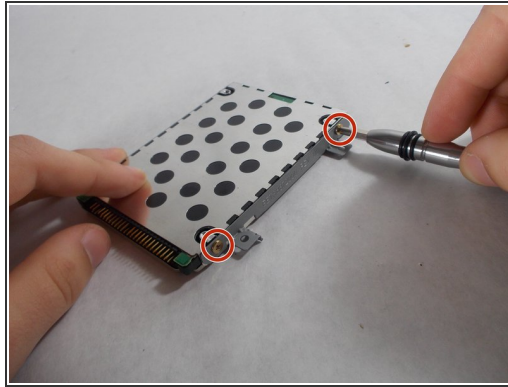
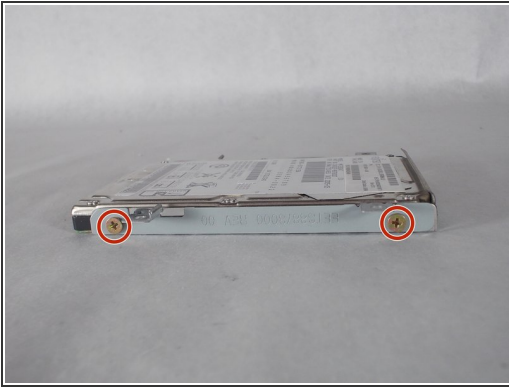
- Locate and unscrew the 4 6mm Phillips Head Screws using a PH 0 Screwdriver bit.
- ⓘ This leaves the Hard drive free to move around. Keep the screws in a safe place so you can easily reassemble this part once this guide is finished.

Step 7



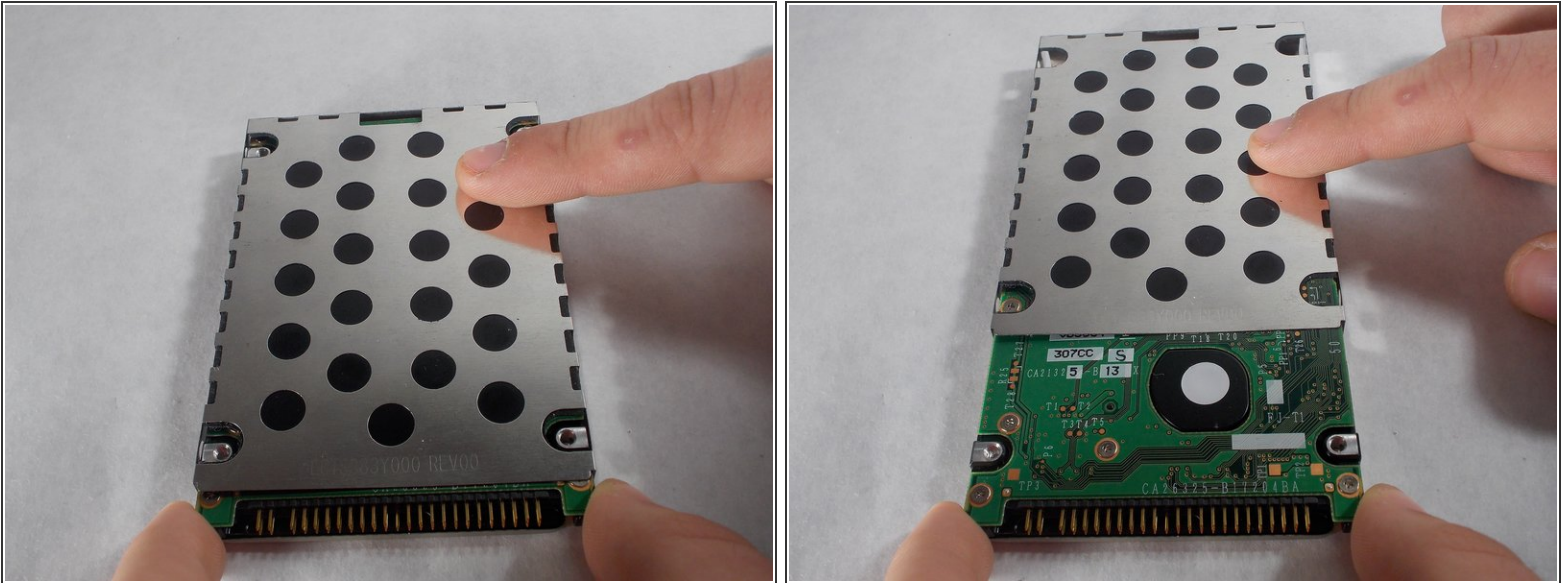
- Place both thumbs on the bottom end of the hard drive and push it up.
 - Then use both index fingers to grasp the two metal side prongs that were held in place by the screws.
 - Pull out the drive towards your body using your index fingers.
- ⚠ Don't lift the hard drive up too high or you might damage the connection between the hard drive and the motherboard.**
- i** There may be some resistance while pulling the hard drive out of its socket. You may need to apply a small amount of force to move it.

Step 8



- After removing the hard drive from the laptop, locate and unscrew the 4 5mm screws (2 on each side) from the rails using a PH 0 screwdriver bit.
- ⓘ Remember the orientation of the rails when removing them for easy assembly.
- ☑ Store these screws somewhere safe so that reassembly can be done more quickly and completely.

Step 9



- Holding the hard drive in place with the connection facing towards your body, put a finger on the cover and slide it away from your body to reveal the hard drive.

⚠ Do not spill liquids on or in any way puncture the circuit board or really any part of the hard drive. This could lead to failure in the part and make it hard to repair or even unusable.

To reassemble your device, follow these instructions in reverse order.