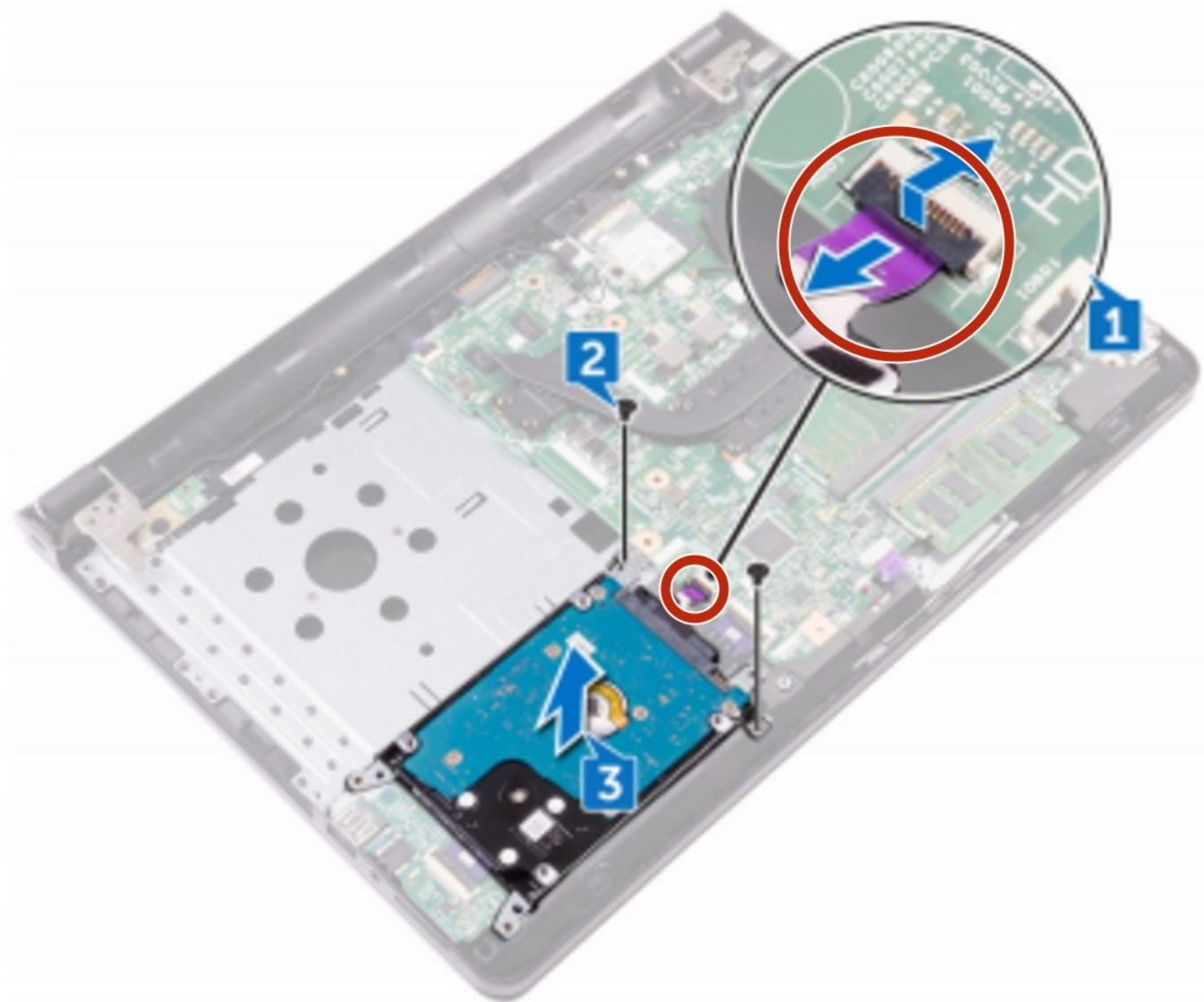




Dell Inspiron 14 3467 Hard-Drive Replacement

How To Remove And Replace The Hard-Drive

Written By: darrius



INTRODUCTION

How To Remove And Replace The Hard-Drive



TOOLS:

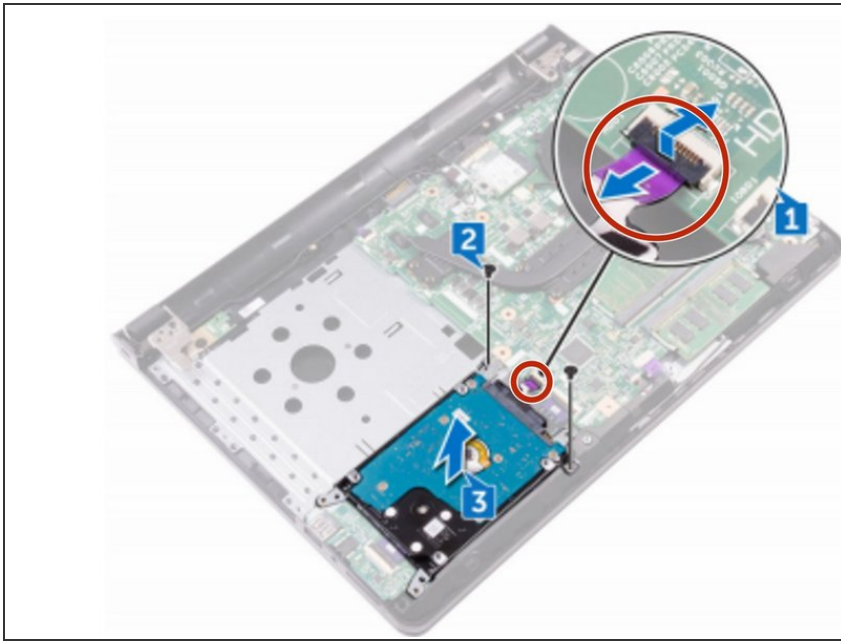
- [Phillips #0 Screwdriver](#) (1)



PARTS:

- [Crucial MX500 1 TB SSD](#) (1)
- [Crucial MX500 250 GB SSD](#) (1)
- [Crucial MX500 500 GB SSD](#) (1)
- [Crucial MX500 2 TB SSD](#) (1)

Step 1 — Disconnecting The Hard-Drive

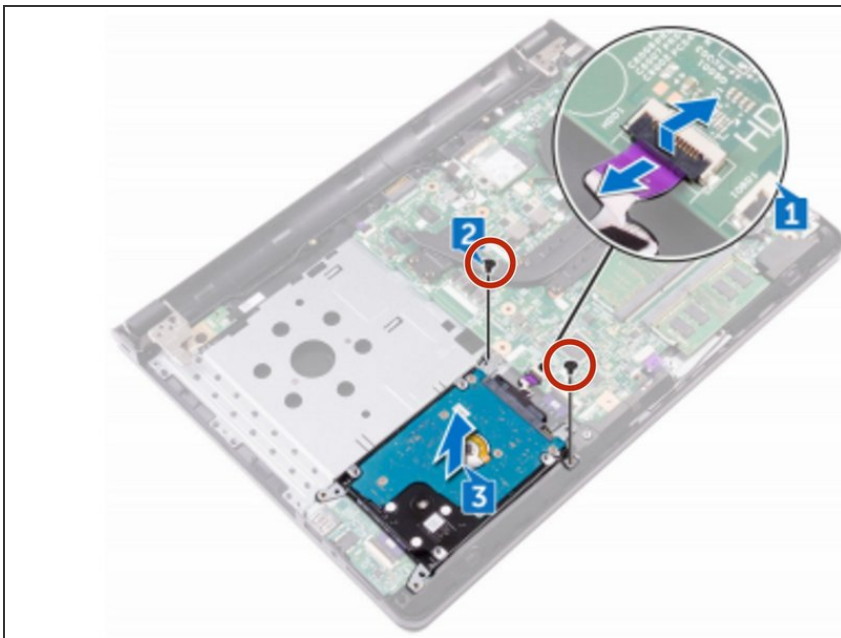


⚠ WARNING: Before working inside your computer, read the safety information that shipped with your computer and follow the steps in [http://n Before working inside your computer.]

⚠ CAUTION: Hard drives are fragile. Exercise care when handling the hard drive.

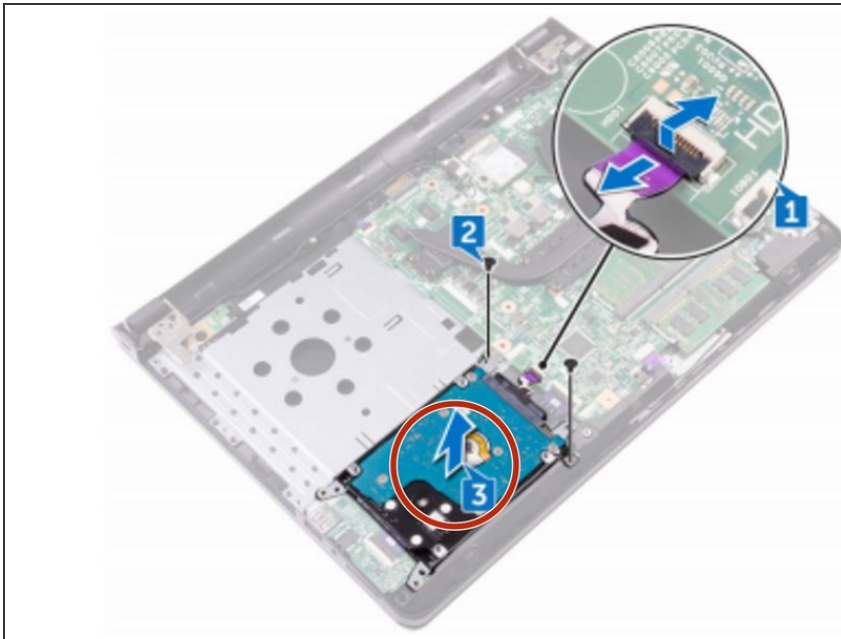
- Open the latch, and disconnect the hard-drive cable from the connector on the system board.

Step 2 — Removing The Two Screws



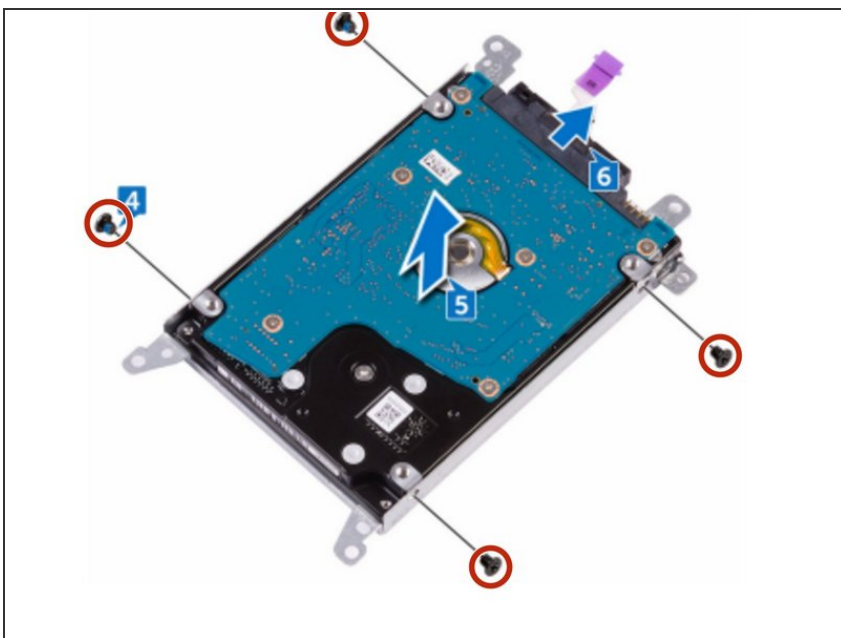
- Remove the two screws (M2x3) that secure the hard-drive assembly to the palm-rest assembly.

Step 3 — Lifting The Hard-Drive



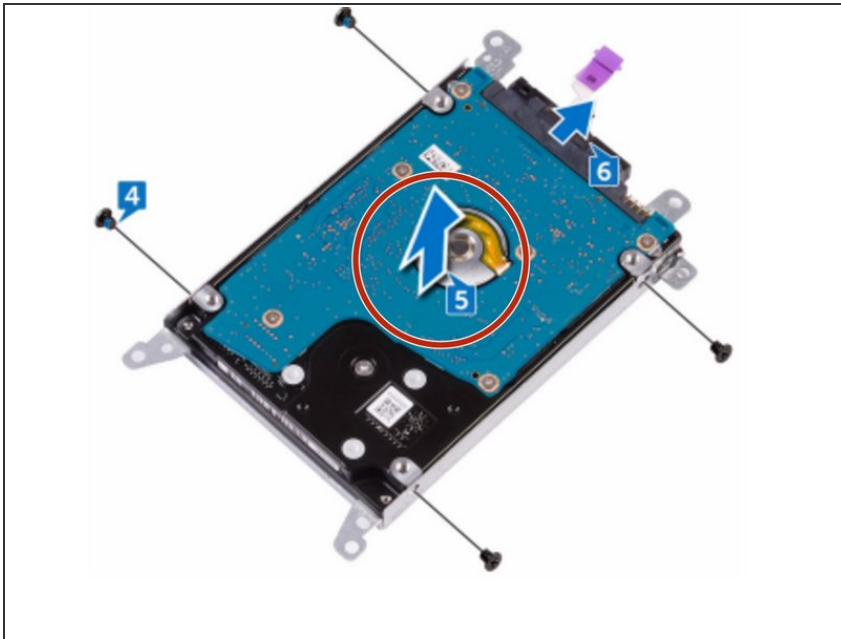
- Lift the hard-drive assembly along with its cable off the palm-rest assembly.

Step 4 — Removing The Four Screws



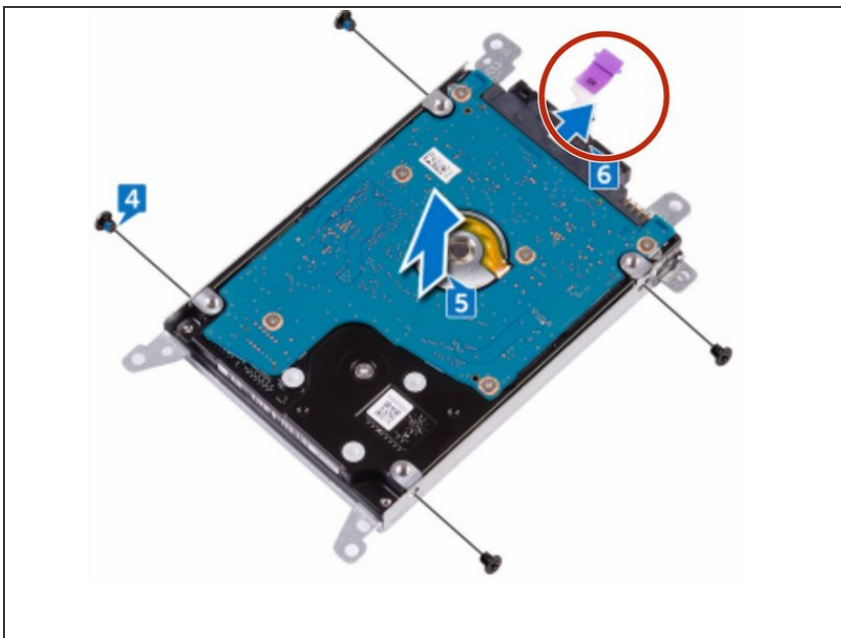
- Remove the four screws (M3x3) that secure the hard-drive bracket to the harddrive assembly.

Step 5 — Removing The Hard-Drive Bracket



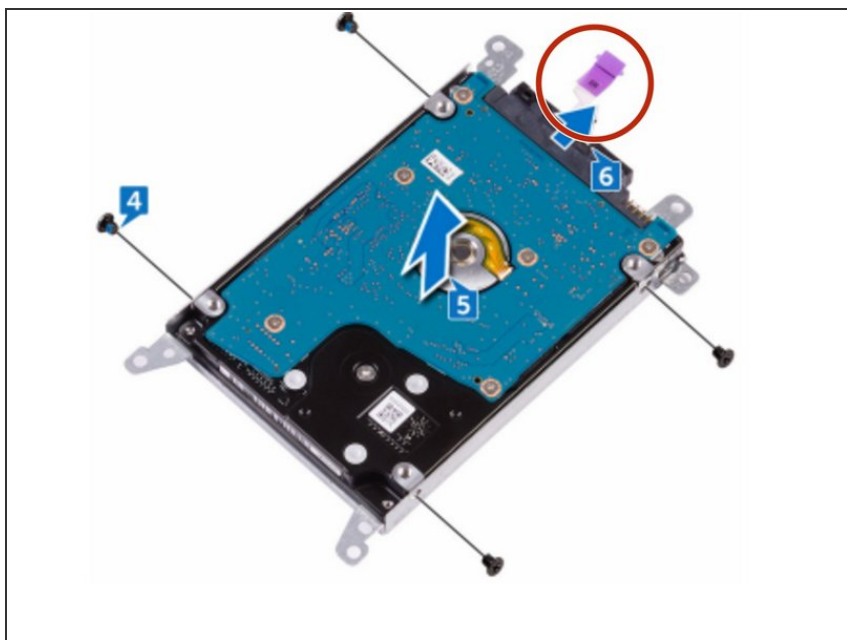
- Lift the hard-drive assembly off the hard-drive bracket.

Step 6 — Disconnecting The Interposer



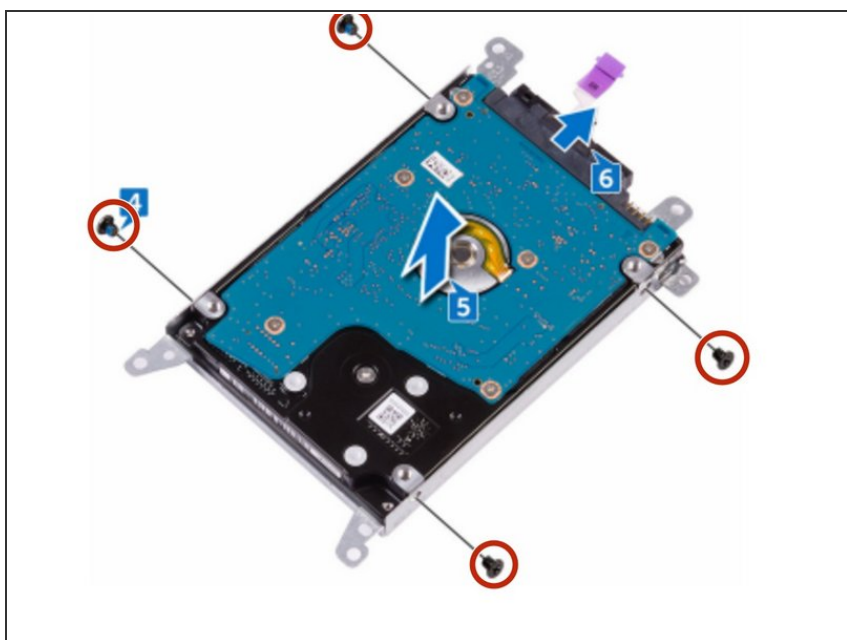
- Disconnect the interposer from the hard drive.

Step 7 — Connecting The Interposer



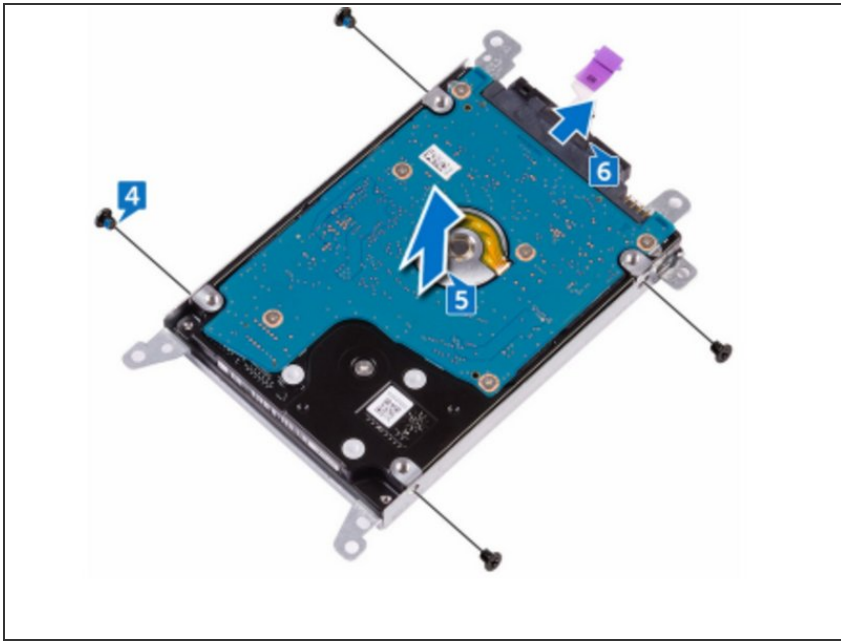
- Connect the interposer to the **NEW** hard drive

Step 8 — Aligning The Screws



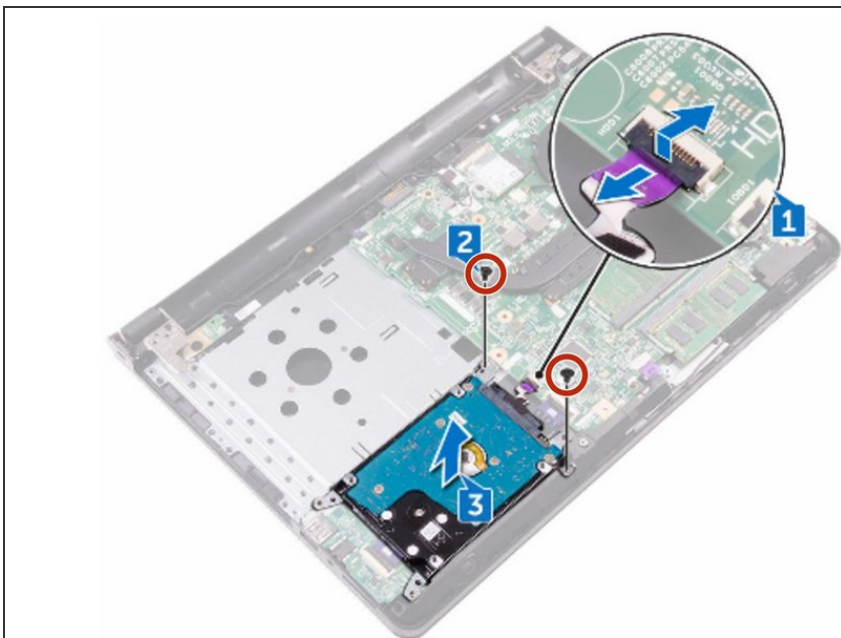
- Align the screw holes on the hard-drive bracket with the screw holes on the hard-drive assembly.

Step 9 — Screwing The Bracket To Hard-Drive



- Replace the four screws (M3x3) that secure the hard-drive bracket to the harddrive assembly.

Step 10 — Securing To Hard-Drive Assembly



- Replace the two screws (M2x3) that secure the hard-drive assembly to the palm-rest assembly.

To reassemble your device, follow these instructions in reverse order.