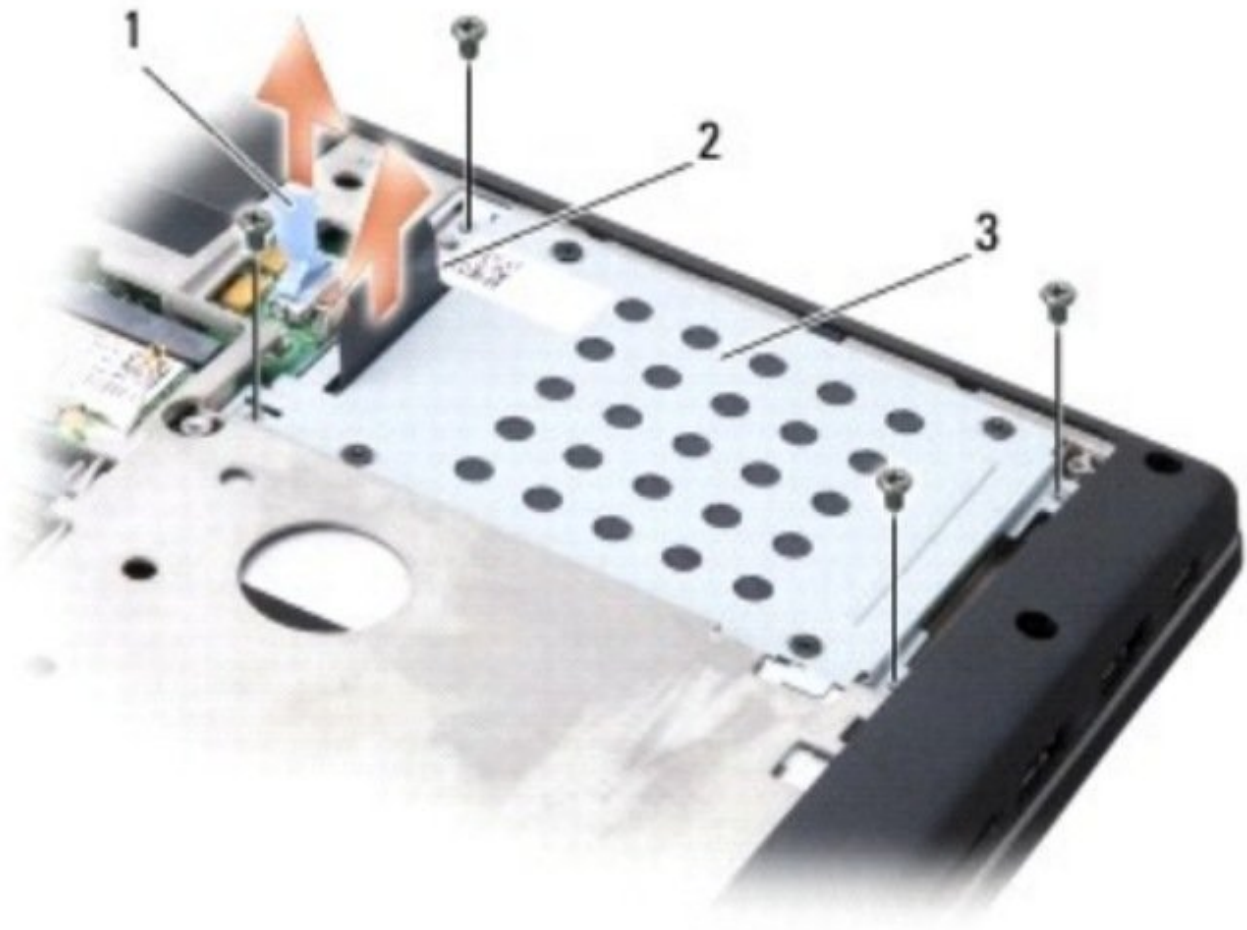




# Dell Studio 1535 Hard Drive Replacement

Written By: Johnathan Hammond

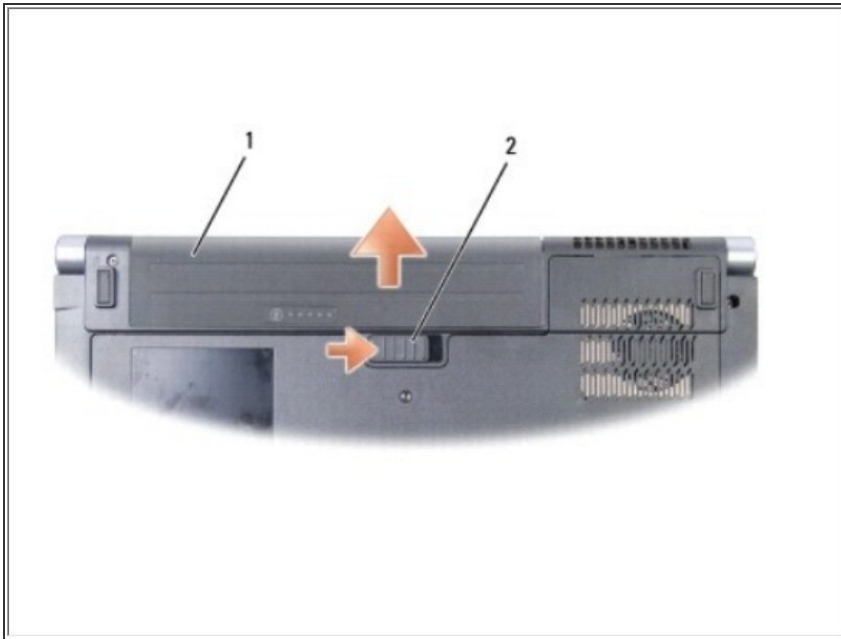




## TOOLS:

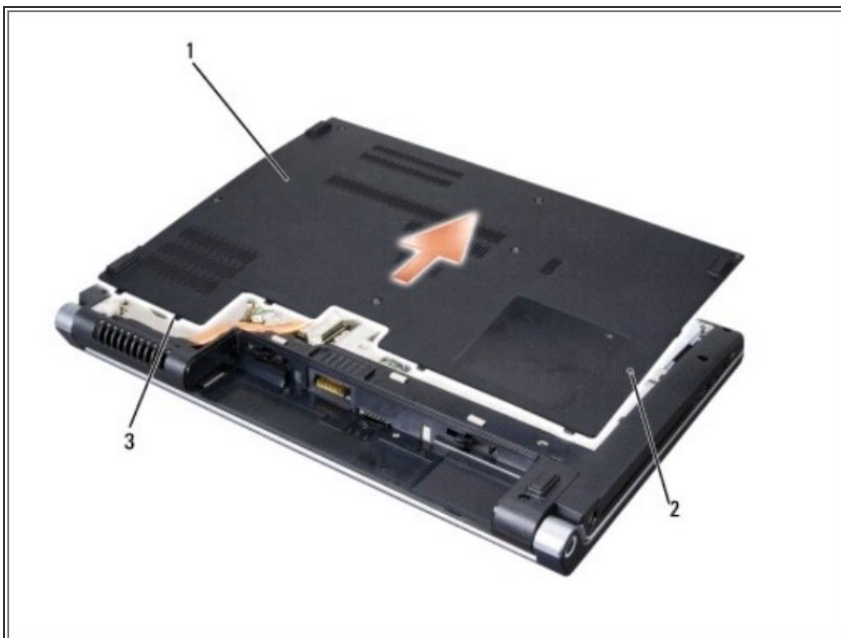
- [Phillips #0 Screwdriver](#) (1)
-

## Step 1 — Battery



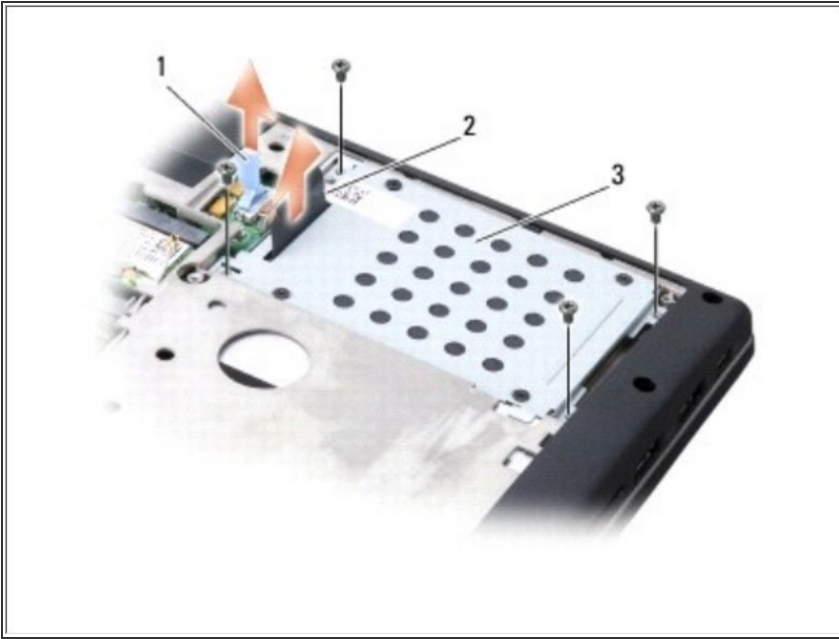
- Slide the battery release latch until it clicks into place.
- Turn the computer top side up, open the display, and press the power button to ground the system board.

## Step 2 — Base Cover



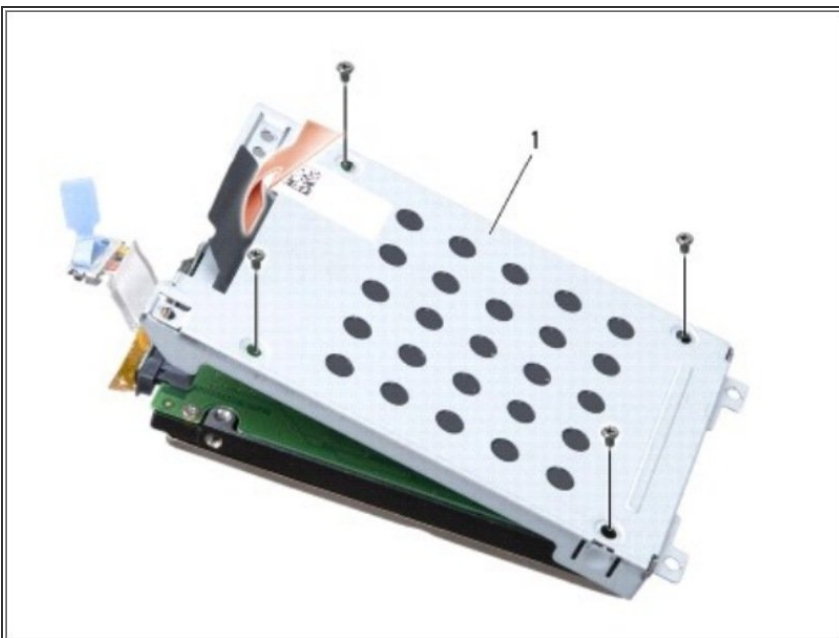
- Turn the computer top side up, open the display, and press the power button to ground the system board.

## Step 3 — Hard Drive



- Remove the four screws securing the hard drive assembly to the computer.
- Pull the hard drive cable pull-tab to disconnect the cable from the system board connector.
- Pull on the hard drive pull-tab to lift the hard drive assembly from the bay.

## Step 4



- Remove the four M3 x 3-mm screws securing the hard drive cage to the hard drive.
- Lift the hard drive cage off the hard drive.

## Step 5



- Disconnect the hard drive cable from the connector on the hard drive..

To reassemble your device, follow these instructions in reverse order.