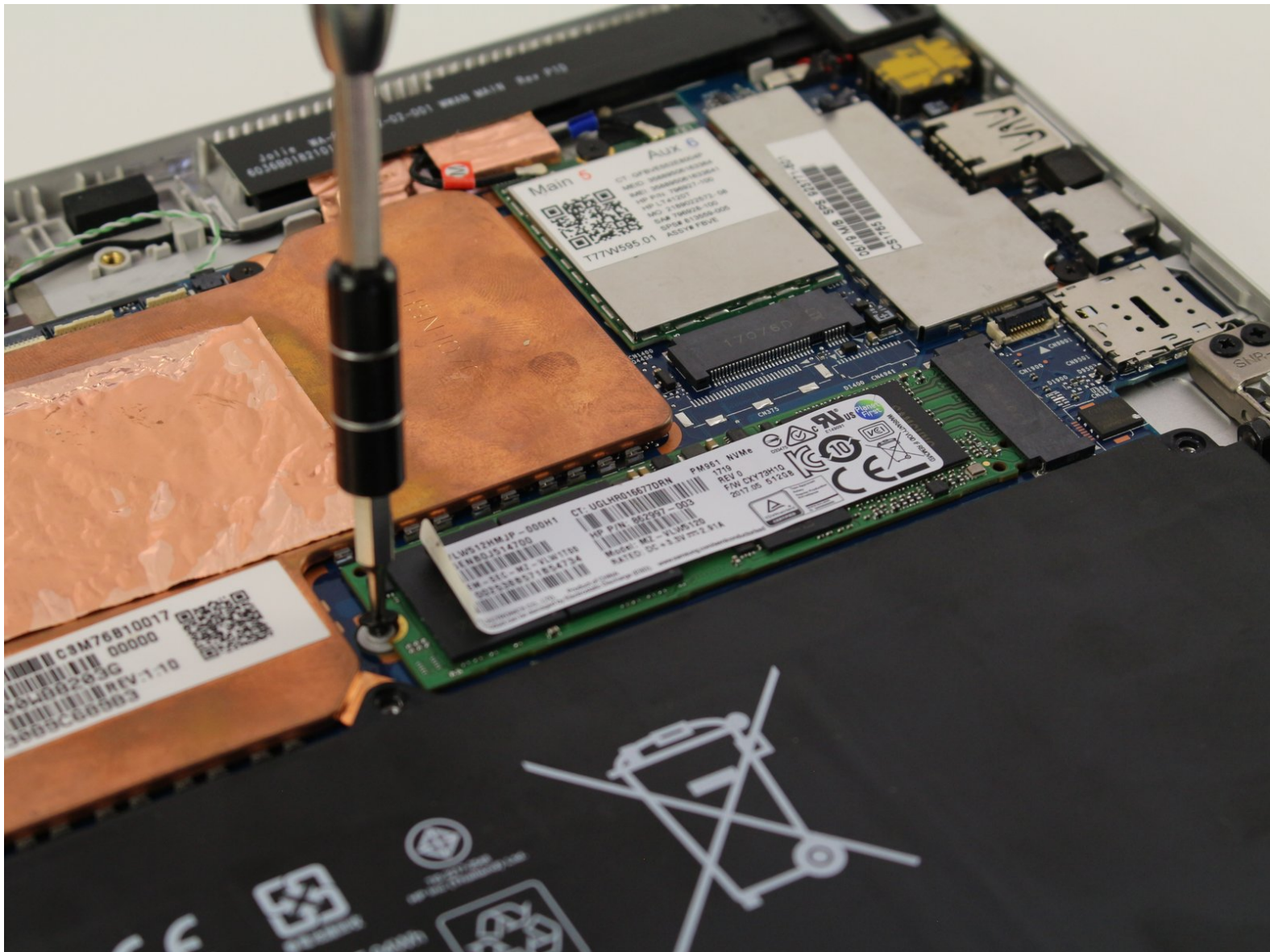




HP Elite x2 1012 G2 SSD Replacement

How to replace the SSD solid state drive in the HP Elite x2 1012 G2.

Written By: Hunter Lane



INTRODUCTION

The SSD can become worn out due to the constant reading and writing of data. As a result, it's important to know how to upgrade or replace it. This guide will explain how to replace the SSD card for the HP Elite x2 1012 G2.

TOOLS:

- [Suction Handle](#) (1)
 - [T5 Torx Screwdriver](#) (1)
 - [iFixit Opening Tool](#) (1)
 - [Phillips #0 Screwdriver](#) (1)
-

Step 1 — Screen



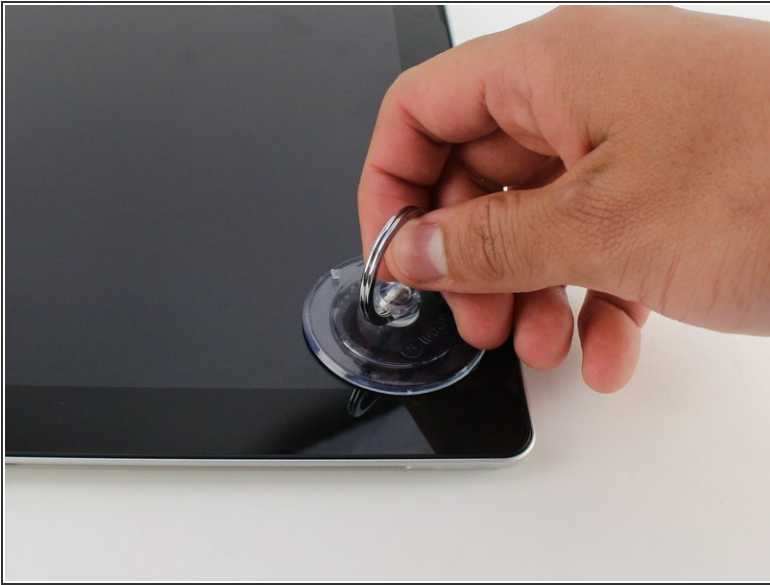
- ❗ Make sure the device is turned off before starting.
- Orient the device so the back is facing you, with the kickstand up.

Step 2



- Remove the six 3mm Torx T5 screws underneath the kickstand.

Step 3



- Turn the device over so the screen is facing you.
- Place a suction cup firmly onto a corner of the screen.
- Lift up gently until you see the screen separate from the casing.
- Repeat this process for all four corners.

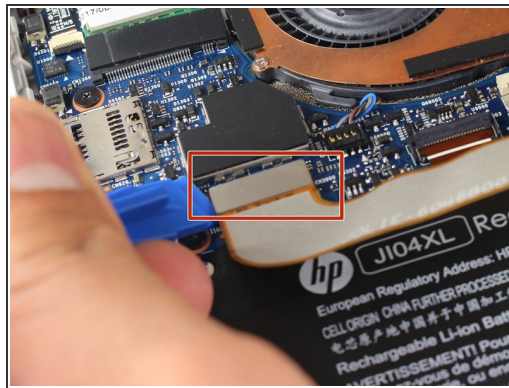
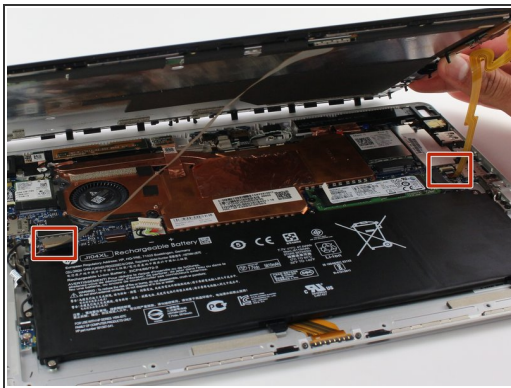
Step 4



- Lift the screen up and off of the device.

⚠ Pry each corner up first, otherwise you may damage or crack the screen.

Step 5



- Remove the two connectors on the back of the screen by lifting the connector tabs on the motherboard with a plastic opening tool and pulling gently.

Step 6



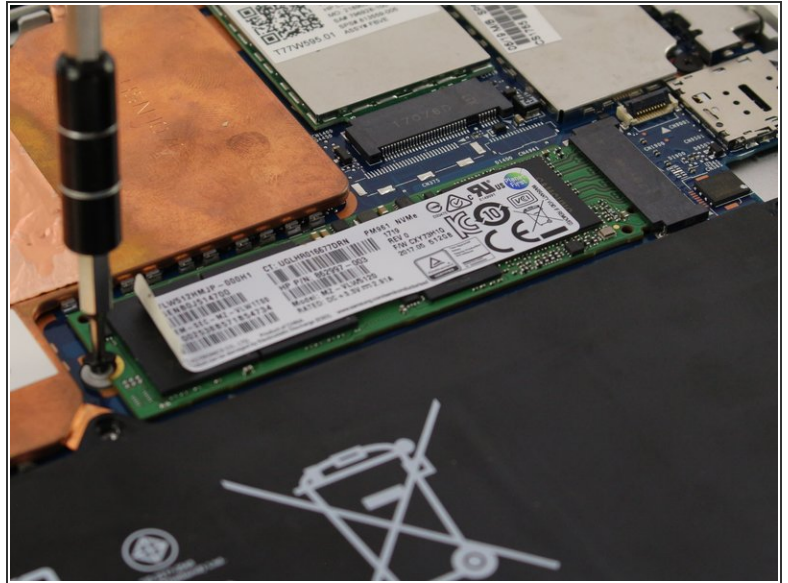
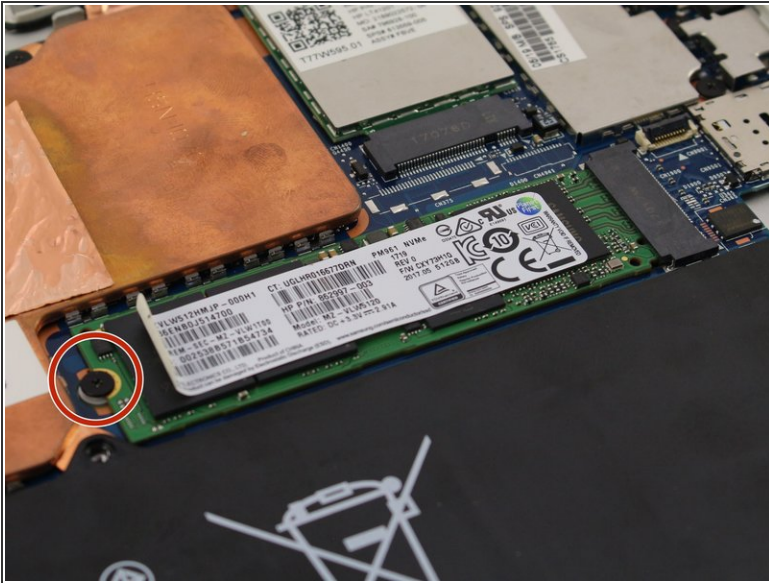
- Remove the screen by gently lifting it off of the device.

Step 7 — SSD



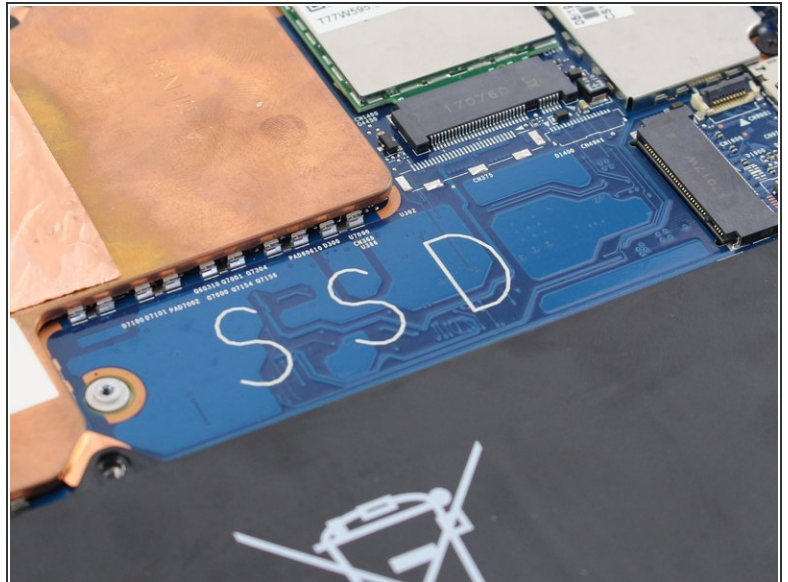
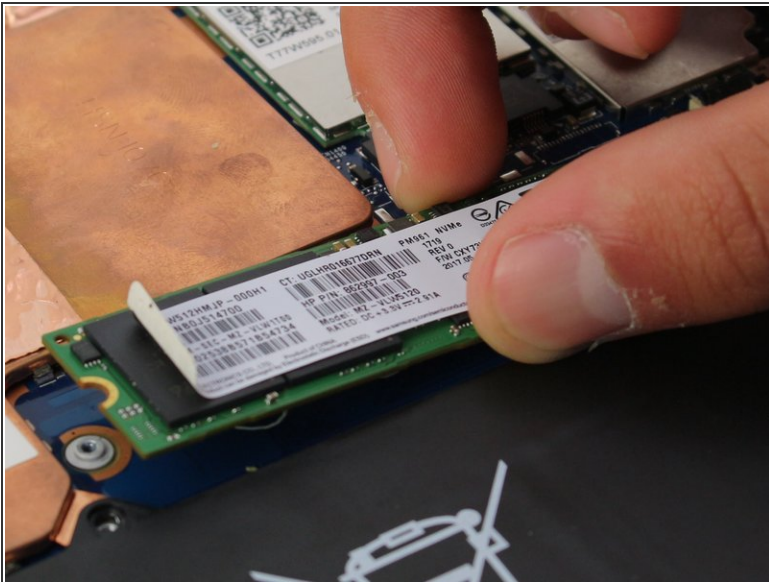
- Orient the device so that the battery is closest to you.
- ⓘ The battery is the large, black rectangle at the bottom of the device.

Step 8



- Remove the single Phillips M2.0x2.0 screw on the SSD using a Phillips screwdriver. Turn the screwdriver counterclockwise to remove the screw.

Step 9



- Gently pull the SSD to the left and up to remove it from the device.

To reassemble your device, follow these instructions in reverse order.