



# Samsung Galaxy S7 Active Battery Replacement

This guide will show you how to replace the...

Written By: Alexander Yazdani



# INTRODUCTION

This guide will show you how to replace the battery of your Samsung Galaxy S7 Active SM-G891AZAAATT. This guide will be helpful for when the battery is damaged or if it no longer holds a charge. Batteries may need replaced after being dropped, water damage, and after so many charging cycles. You will need to take the battery out to replace most other parts of the phone. No special skills required for this operation.

**WARNING:** Ensure your phone is powered off and unplugged from the charger prior to beginning this repair.



## TOOLS:

[Tweezers](#) (1)  
[Heat Gun](#) (1)  
[Metal Spudger](#) (1)  
[Phillips #000 Screwdriver](#) (1)



## PARTS:

[Samsung Galaxy S7 Active Screen](#) (1)

## Step 1 — Samsung Galaxy S7 Active Disassembly



- Melt the adhesive on the screen by applying a blow dryer directly on the screen.

⚠ Your phone is hot, please do not touch it with your bare hand.

## Step 2



- Wedge the metal spudger in between the screen and the frame to begin separating them.
- ① It would be easier to separate the screen from the sealing adhesive on the frame if you with more than one metal spudger.
- ① Your phone might no longer be watertight after you reassemble it.

## Step 3



- Slide the metal spudger around the phone at least once.
- ① It would be easier to slide your metal spudger if you apply the blow dryer to where you are currently sliding.

## Step 4



- Lift the screen up with your hands.

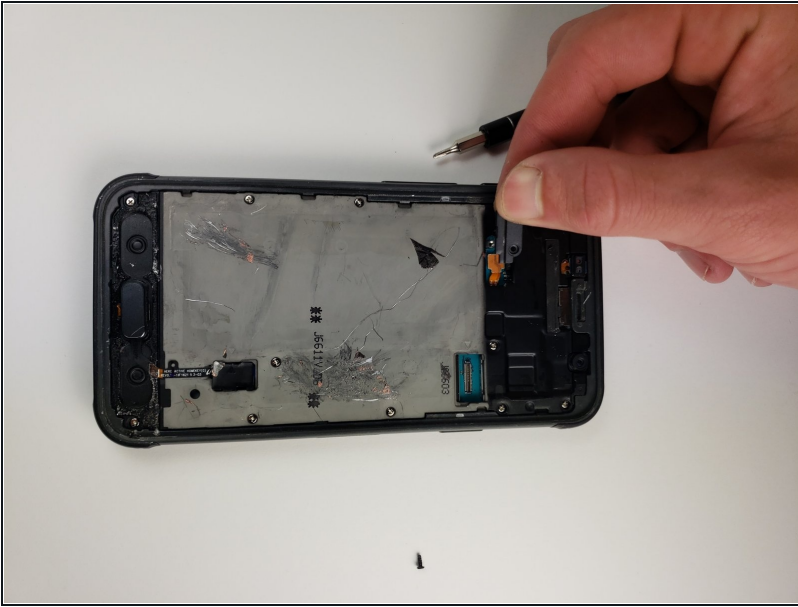
⚠ Please wash your hands thoroughly with hot water and soap after you finish.

## Step 5 — Battery



- Use a Phillips #000 screwdriver to remove a single screw.

## Step 6



- Use [tweezers](#) to remove the small plastic cover you just unscrewed.

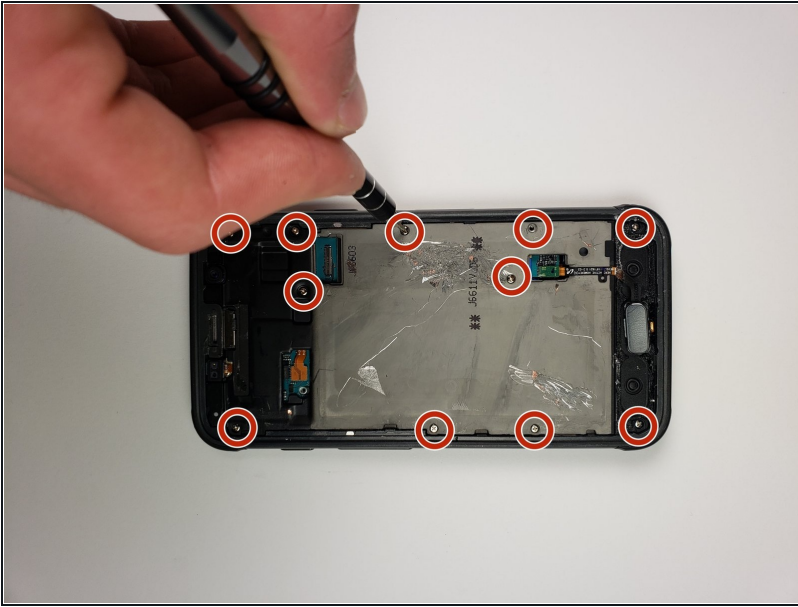
## Step 7



- Use tweezers to remove the other small plastic cover.



## Step 8



- Use a Phillips head #000 to take out the eleven screws marked in the photo.

## Step 9



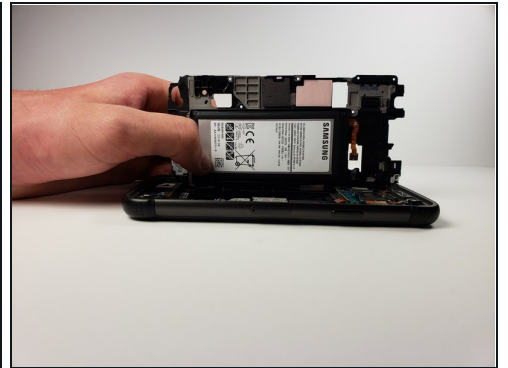
- Use tweezers to disconnect the marked pieces from the motherboard.

## Step 10



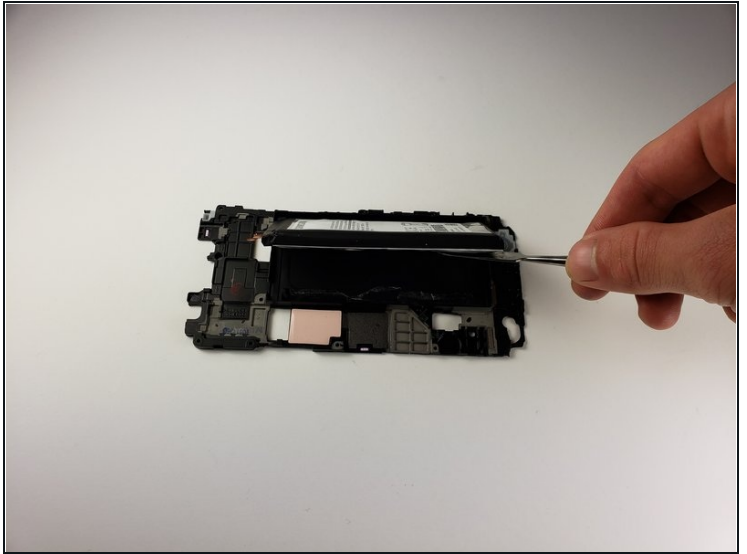
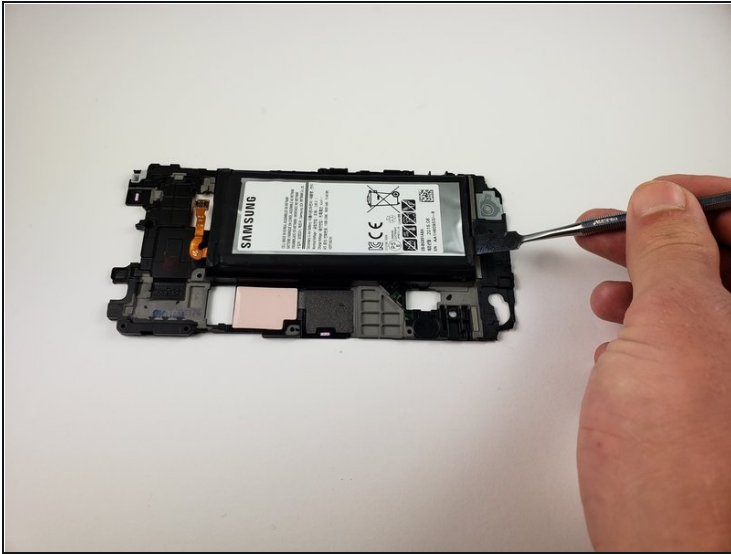
- Use tweezers to take out the middle button and its connection to the motherboard.

## Step 11



- Use a metal spudger to pull the mid frame and battery off of the motherboard.

## Step 12



- Use a spudger to remove the battery from the midframe.
  - ☑ To install a new battery and adhesive, [follow this guide](#).
- 

To reassemble your device, follow these instructions in reverse order.