



Samsung Galaxy S7 Active Rear Camera Replacement

How to replace the Samsung Galaxy S7 Active rear camera.

Written By: Joe De Leone



INTRODUCTION

This guide will teach you how to replace the rear camera on the Samsung Galaxy S7 Active.



TOOLS:

- [Phillips #000 Screwdriver](#) (1)
- [Heat Gun](#) (1)
- [Metal Spudger](#) (1)
- [Hair Dryer](#) (1)
- [Tweezers](#) (1)



PARTS:

- [Samsung Galaxy S7 Active Screen](#) (1)

Step 1 — Samsung Galaxy S7 Active Disassembly



- Melt the adhesive on the screen by applying a blow dryer directly on the screen.

⚠ Your phone is hot, please do not touch it with your bare hand.

Step 2



- Wedge the metal spudger in between the screen and the frame to begin separating them.
- ⓘ It would be easier to separate the screen from the sealing adhesive on the frame if you with more than one metal spudger.
- ⓘ Your phone might no longer be watertight after you reassemble it.

Step 3



- Slide the metal spudger around the phone at least once.

i It would be easier to slide your metal spudger if you apply the blow dryer to where you are currently sliding.

Step 4



- Lift the screen up with your hands.

⚠ Please wash your hands thoroughly with hot water and soap after you finish.

Step 5 — Battery



- Use a Phillips #000 screwdriver to remove a single screw.

Step 6



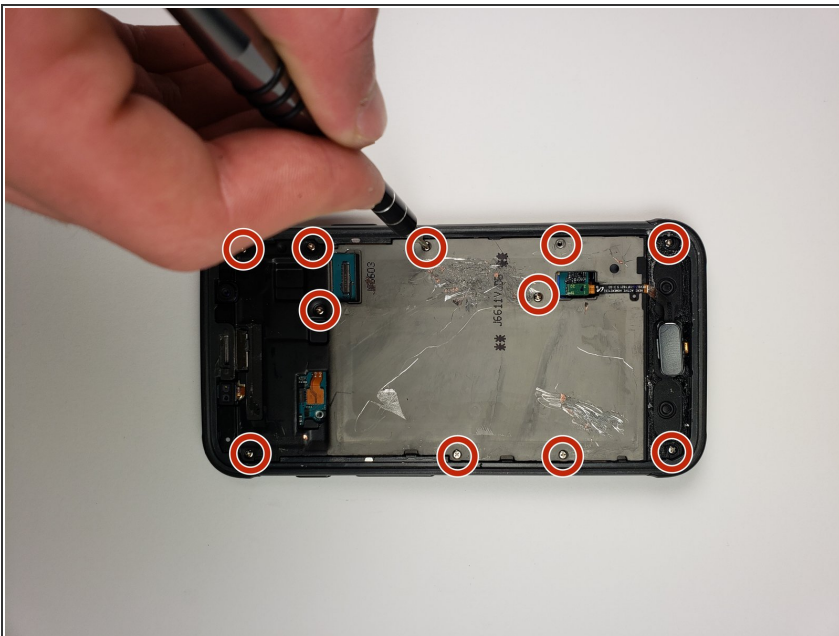
- Use tweezers to remove the small plastic cover you just unscrewed.

Step 7



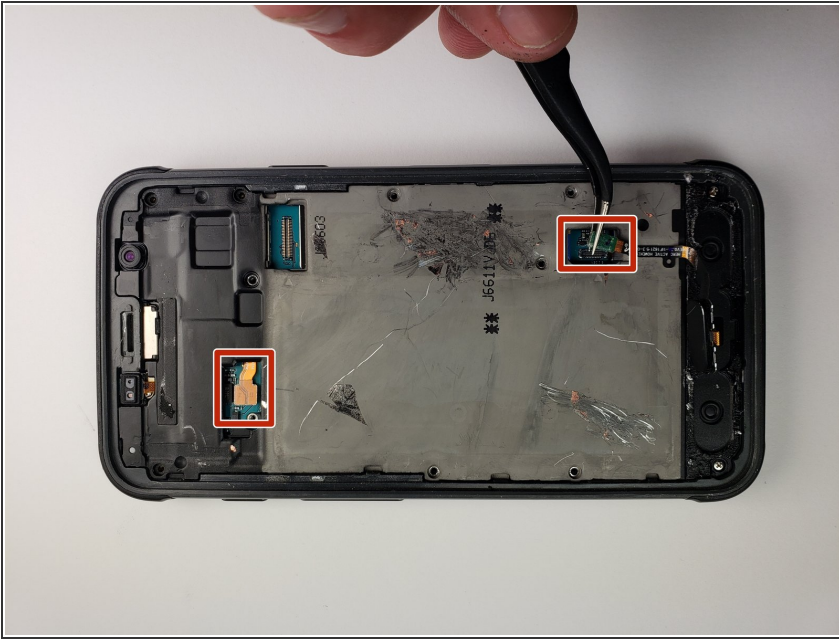
- Use tweezers to remove the other small plastic cover.

Step 8



- Use a Phillips head #000 to take out the eleven screws marked in the photo.

Step 9



- Use tweezers to disconnect the marked pieces from the motherboard.

Step 10



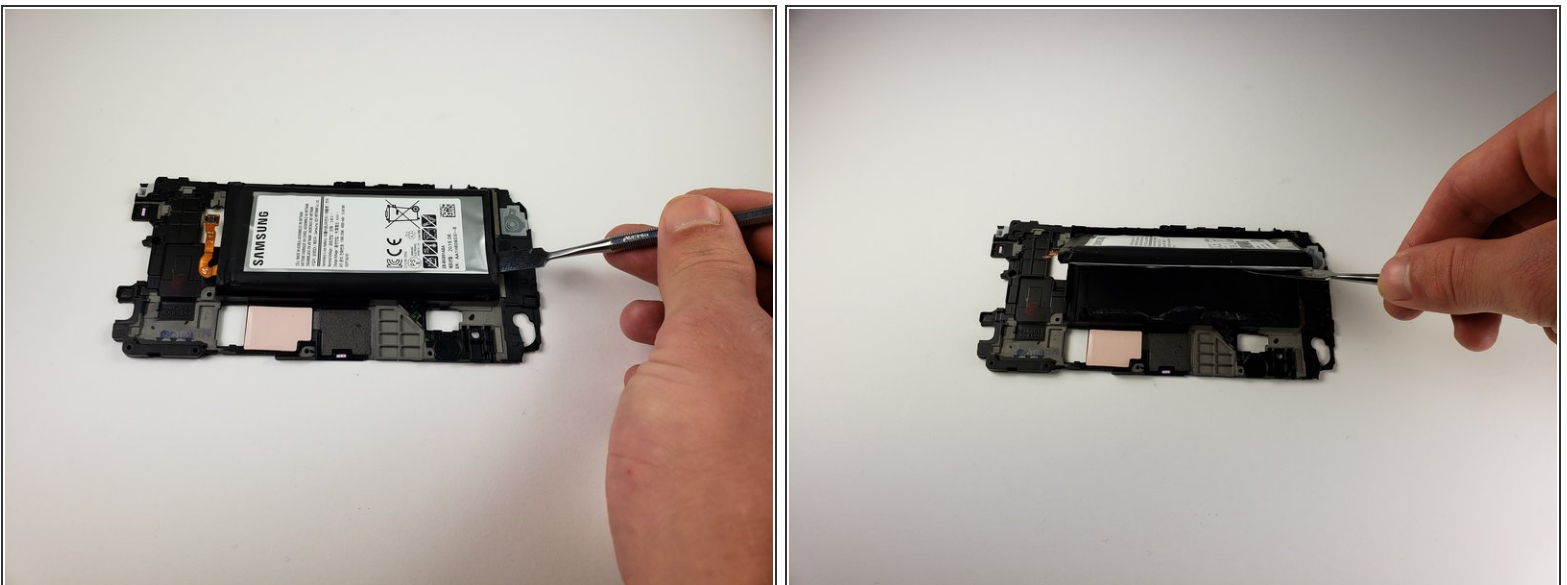
- Use tweezers to take out the middle button and its connection to the motherboard.

Step 11



- Use a metal spudger to pull the mid frame and battery off of the motherboard.

Step 12



- Use a spudger to remove the battery from the midframe.

✦ To install a new battery and adhesive, [follow this guide](#).

Step 13 — Rear Camera



- Use tweezers to disconnect the front camera from the battery.
- ⓘ The connector should unsnap similar to a lego piece.

To reassemble your device, follow these instructions in reverse order.