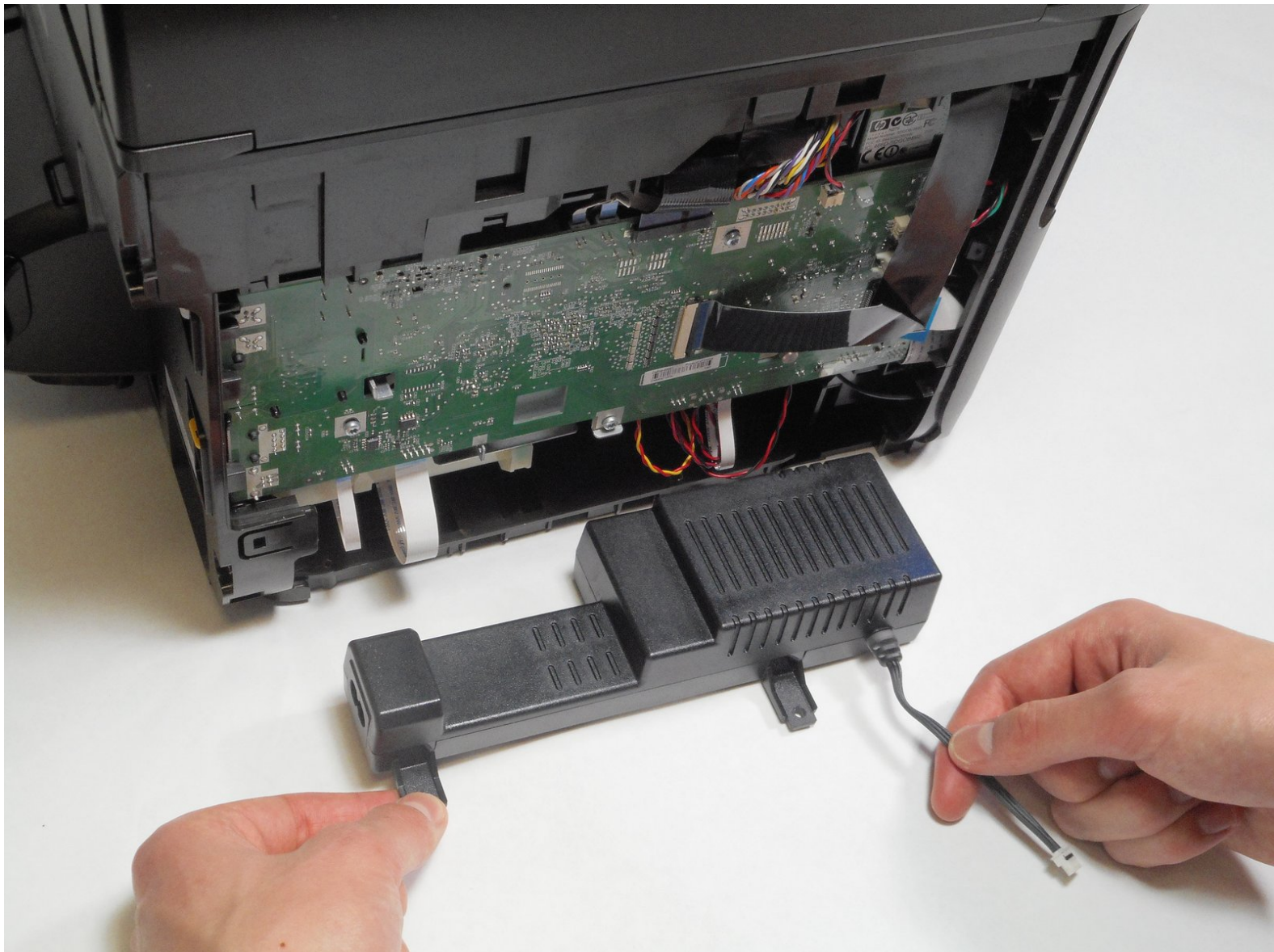




# HP Officejet Pro 8600 Plus Power Source Adapter Replacement

This guide will show how to replace an HP Officejet Pro 8600 Plus power source adapter.

Written By: Karissa Roof



---

## INTRODUCTION

The Power Source Adapter on the HP Officejet Pro 8600 plus may have connection issues after wear and repeated use. This guide describes how to replace the Power Source Adapter.

---

### **TOOLS:**

- [iFixit Opening Tools](#) (2)
  - [T10 Torx Screwdriver](#) (1)
-

## Step 1 — Power Source Adapter



- Turn the printer so the back is facing you.
- Put the printer in a vertical position by lifting its right side.

## Step 2



- Remove the two 12mm-T10 Torx screws on the top edge of the printer.

## Step 3



- Rotate the printer clockwise so the bottom of the printer is facing you.



## Step 4



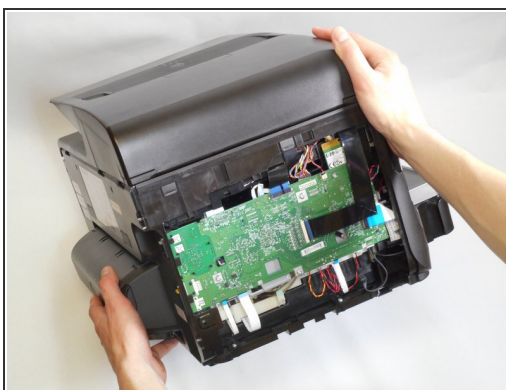
- Insert the plastic opening tool underneath the slot on the right that aligns with the edge of the back panel.
- Insert a second plastic opening tool in the notch lining up with the crease in the back panel.
- ⓘ This step requires applying a significant amount of force on the left notch. Don't be alarmed if you hear popping noises.

## Step 5



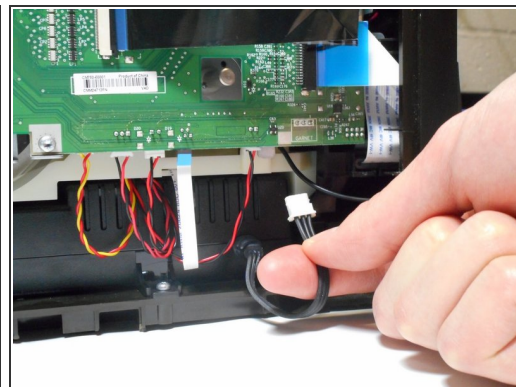
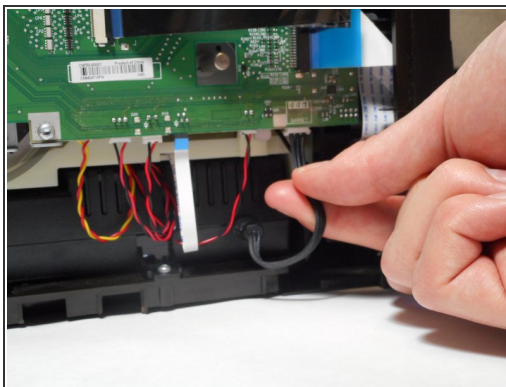
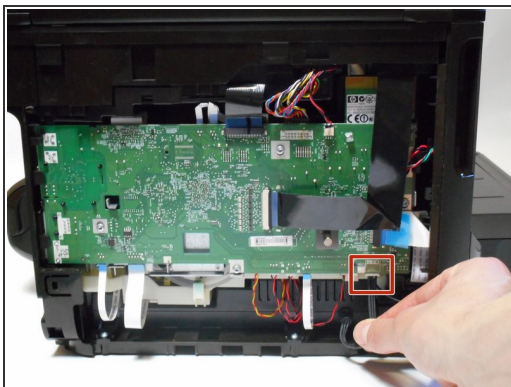
- Remove the side panel from the printer by lifting upwards toward you.
- ★ For reassembly, slide the side panel from left to right into place.

## Step 6



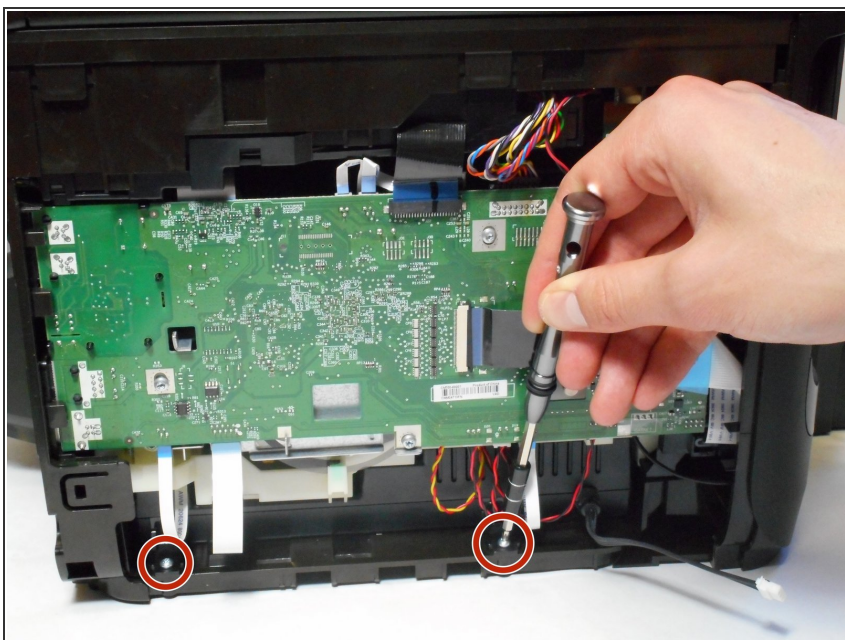
- Rotate the printer to its standard position.

## Step 7



- Unplug the black wire with the white cap connecting the power supply to the motherboard.

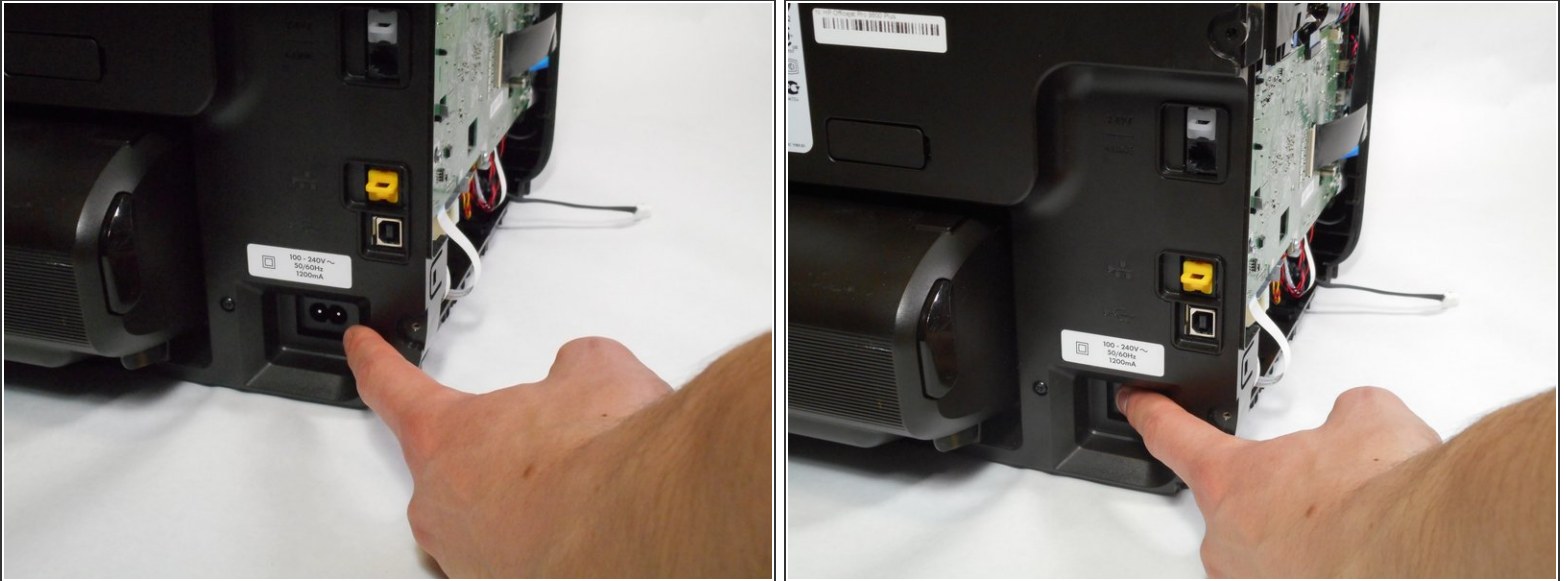
## Step 8



- Remove the two 12mm-T10 Torx screws from the base of the power supply mount.

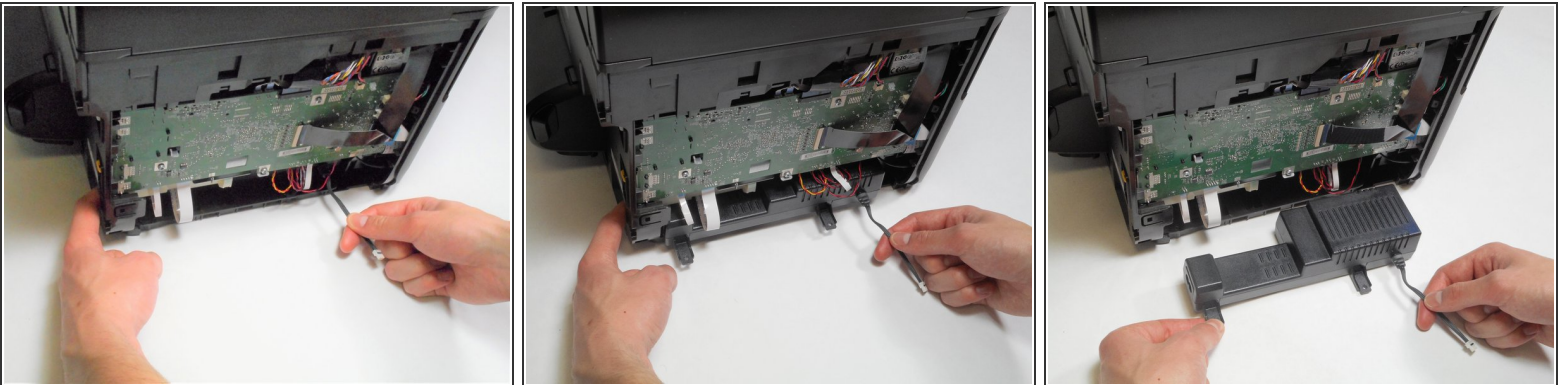


## Step 9



- Place your left hand on the left side of the power supply through the opening in the side of the printer.

## Step 10



- Grab the base of the cable on the right side of the power supply with your right hand.
- Remove the power supply by pulling your right hand toward you and pushing your left fingers toward you.

To reassemble your device, follow these instructions in reverse order.