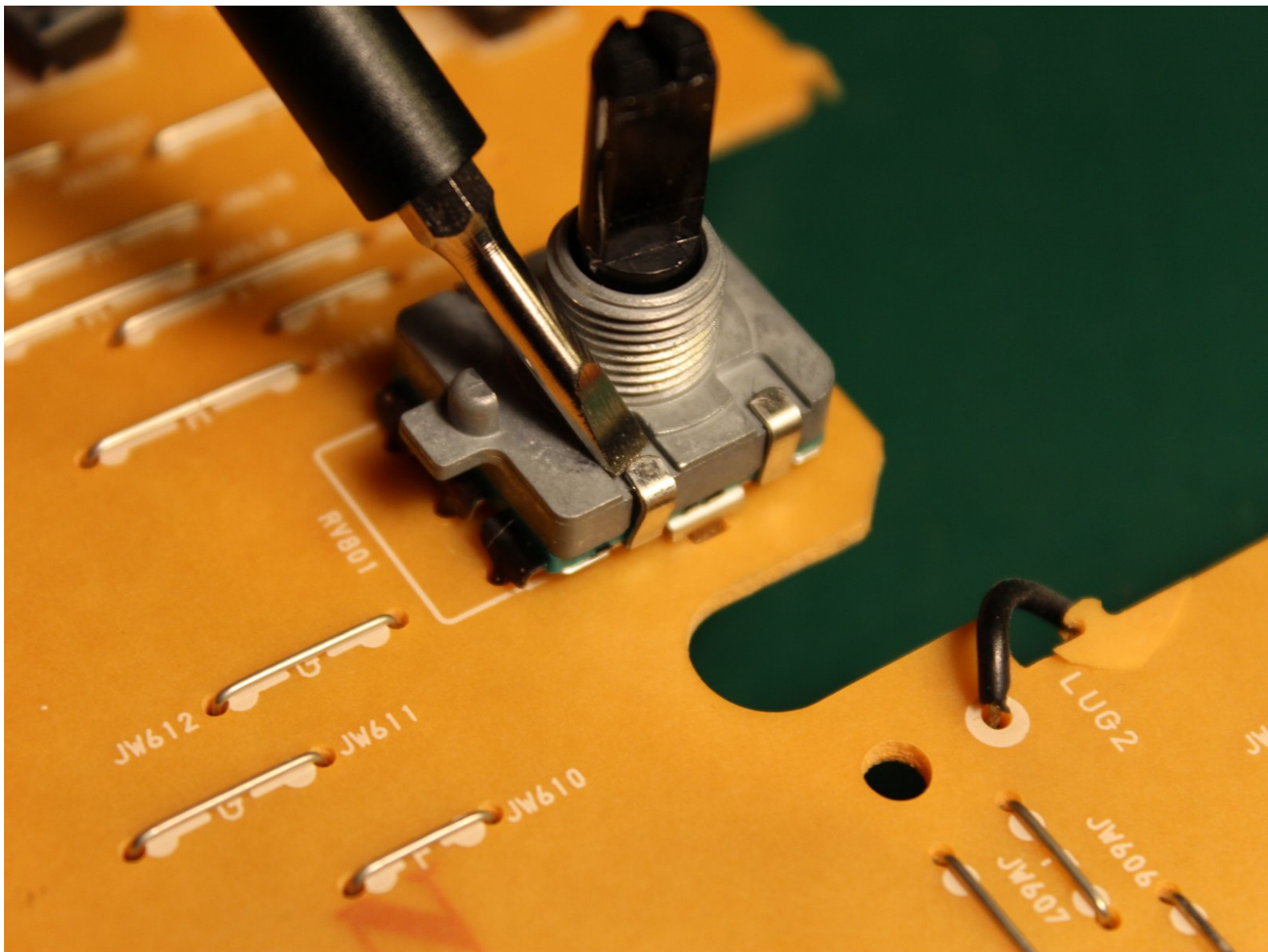




CMT-CP1 Rotary encoder cleaning/replacing

Here I fix the rotary encoder volume control. This is a common problem they get dirty and become erratic.

Written By: Jacco Hogen Esch



INTRODUCTION

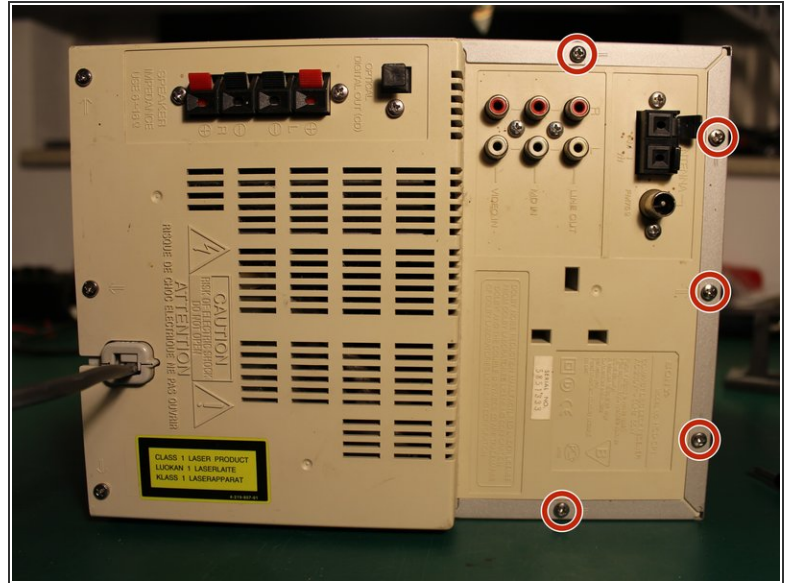
Here I fix the rotary encoder volume control. This is a common problem they get dirty and become erratic.



TOOLS:

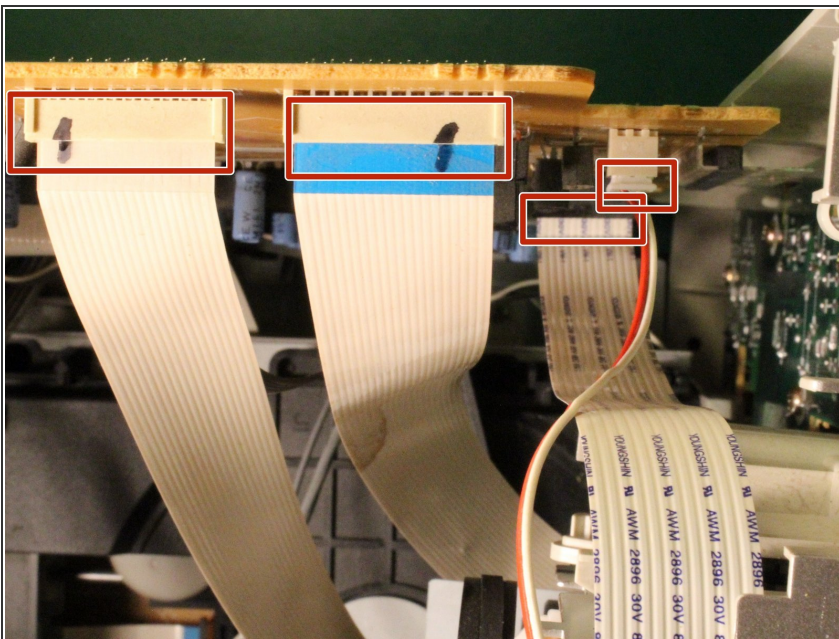
- [Phillips #1 Screwdriver](#) (1)
 - [Flathead Screwdriver](#) (1)
-

Step 1 — remove cover



- Remove the screws

Step 2 — remove flex cables



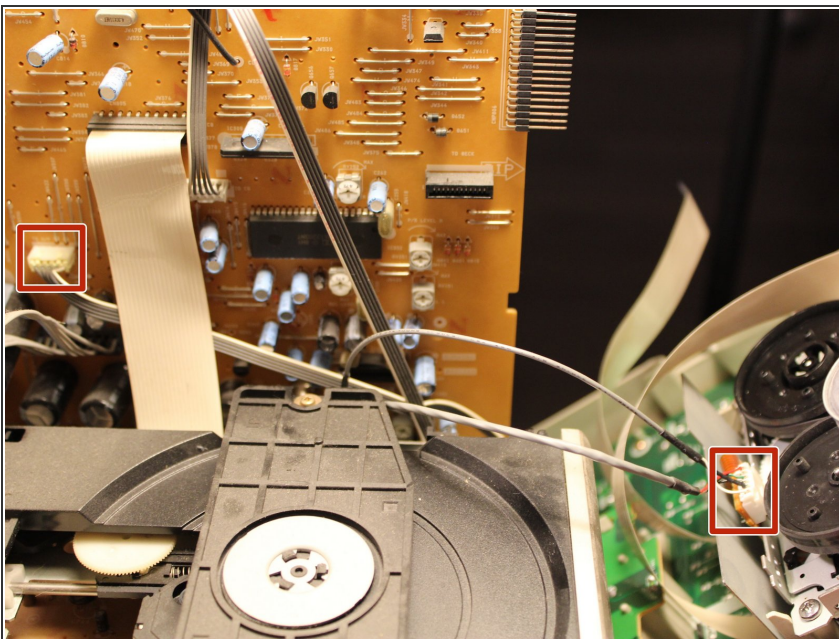
- Remove the flex cables with easy access

Step 3 — remove screws



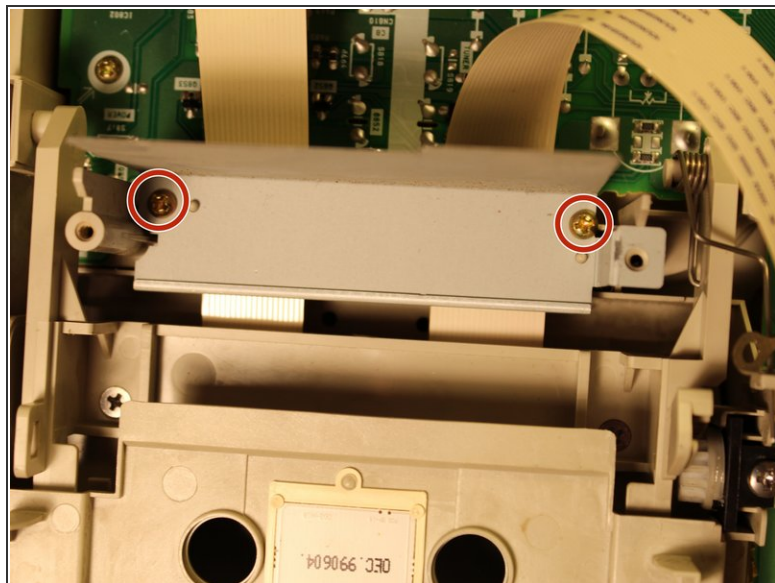
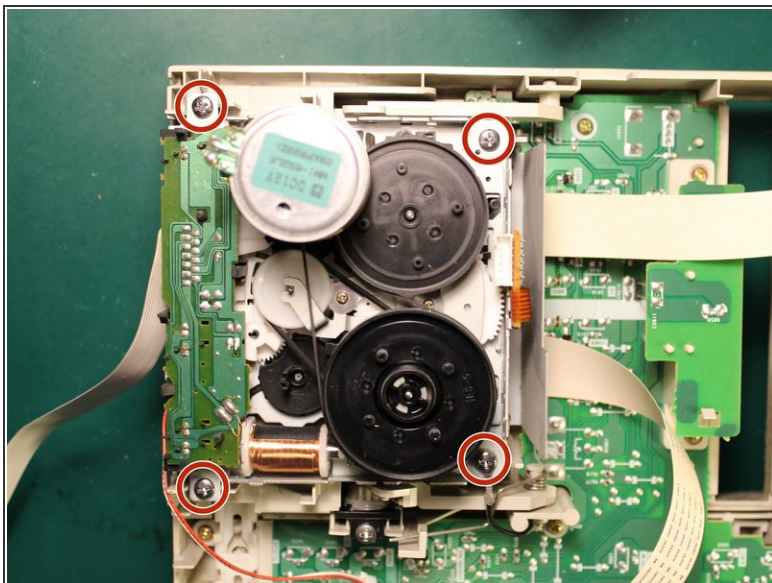
- Remove the screws on both sides and on the bottom

Step 4 — remove more cables



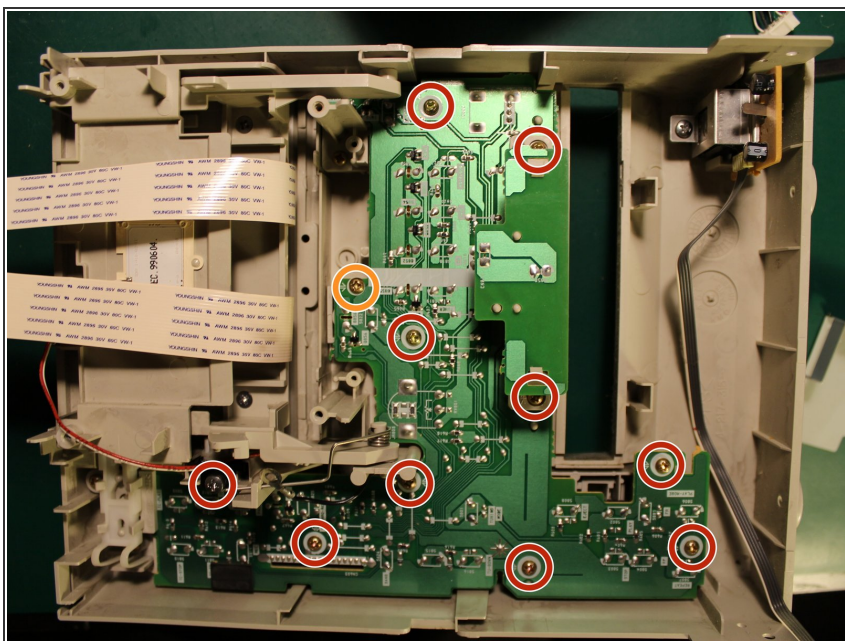
- Remove the front and the rest of the cables

Step 5 — remove cassette deck



- Remove the cassette deck (this is to access the screw beneath it)

Step 6 — remove pcb



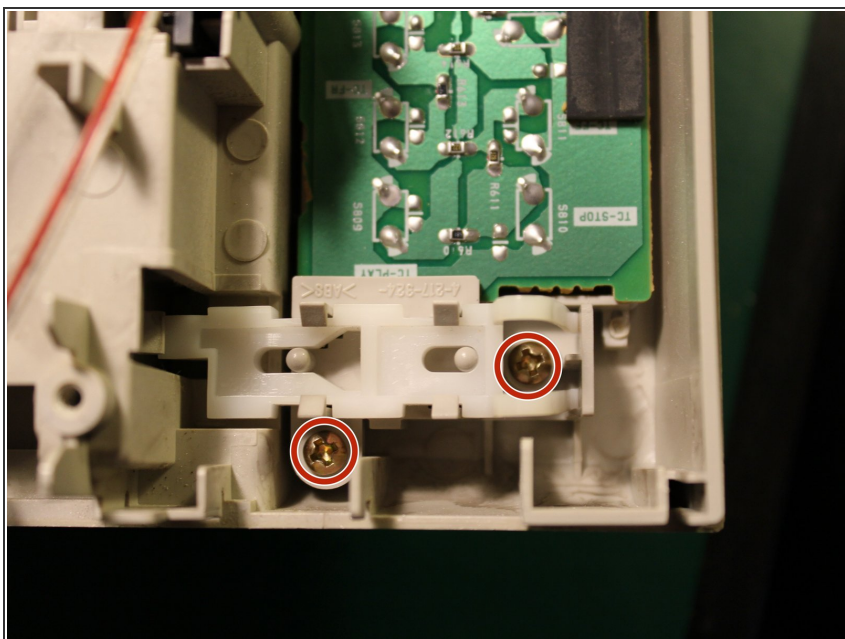
- Remove the screws (you have to remove the casetdeck to access the orange screw)

Step 7 — remove knob



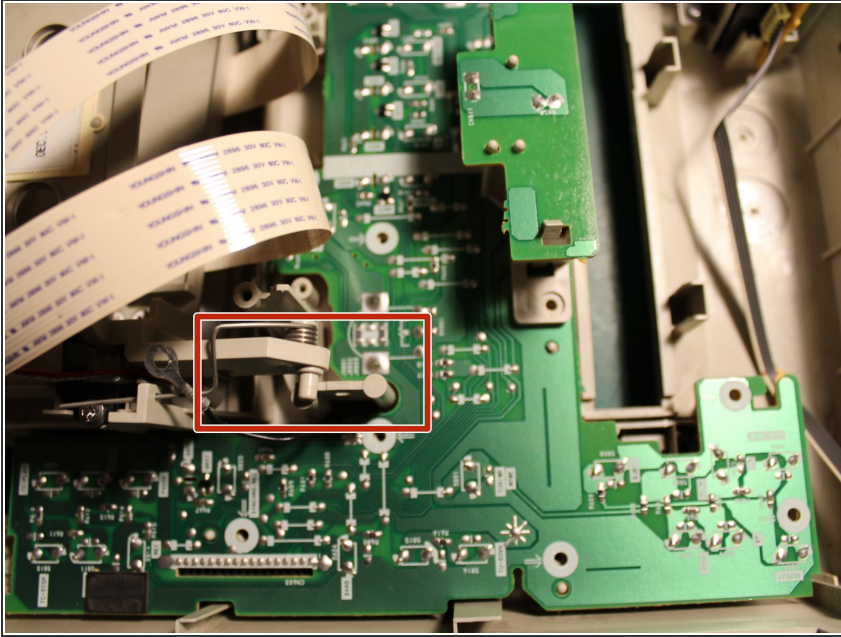
- Remove the volume knob and the screw behind it

Step 8 — remove more screws



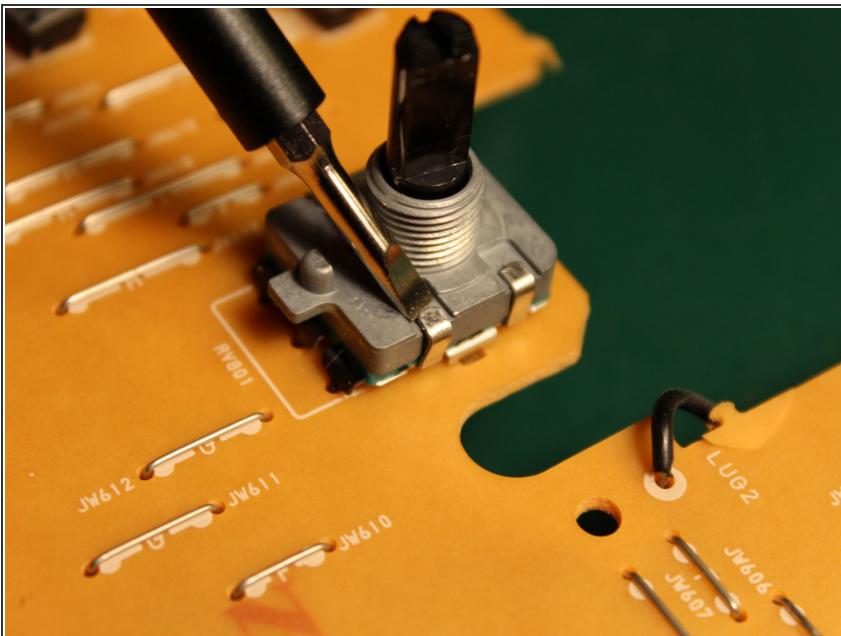
- Remove the screws

Step 9 — lift up one side



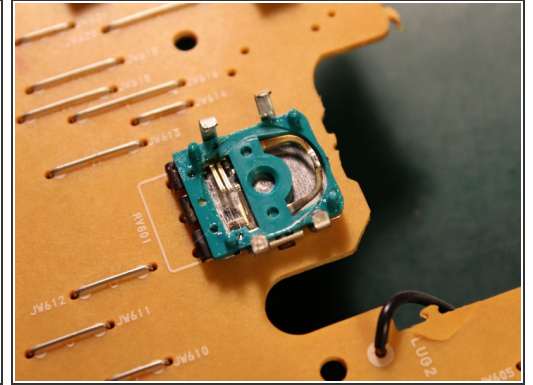
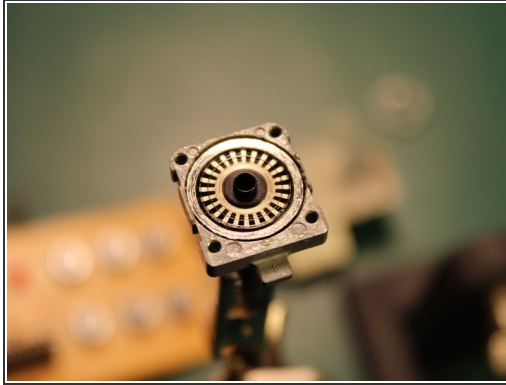
- carefully lift up one side of the cassette deck and remove the pcb

Step 10 — open the rotary encoder



- Remove the taps to the side carefully

Step 11 — clean the rotary encoder



- clean up your rotary encoder with a screwdriver, also the inside!

To reassemble your device, follow these instructions in reverse order.