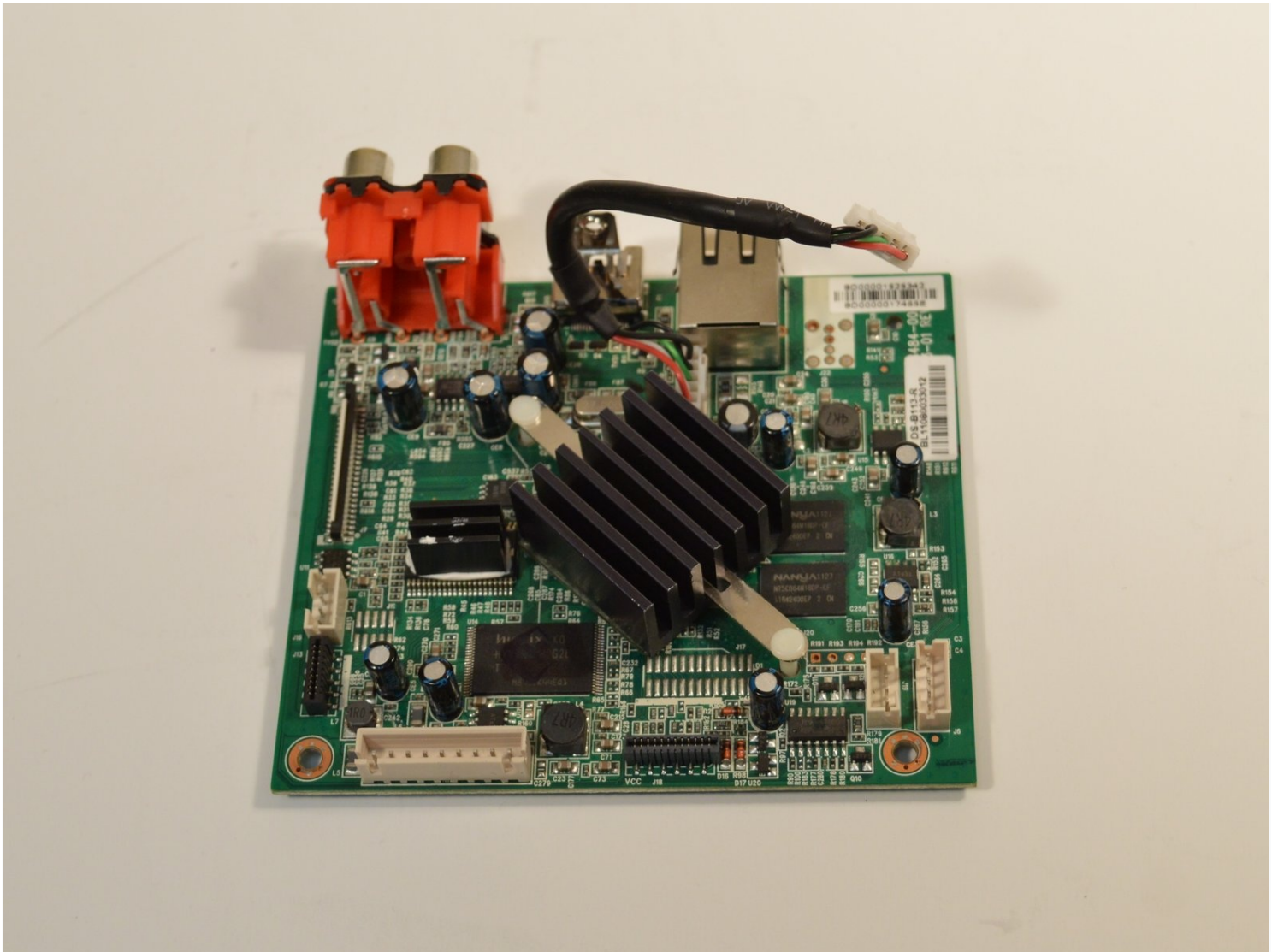




Dynex DX-WBRDVD1 Motherboard Replacement

The motherboard is found below the WiFi antenna...

Written By: Harrison Williams



INTRODUCTION

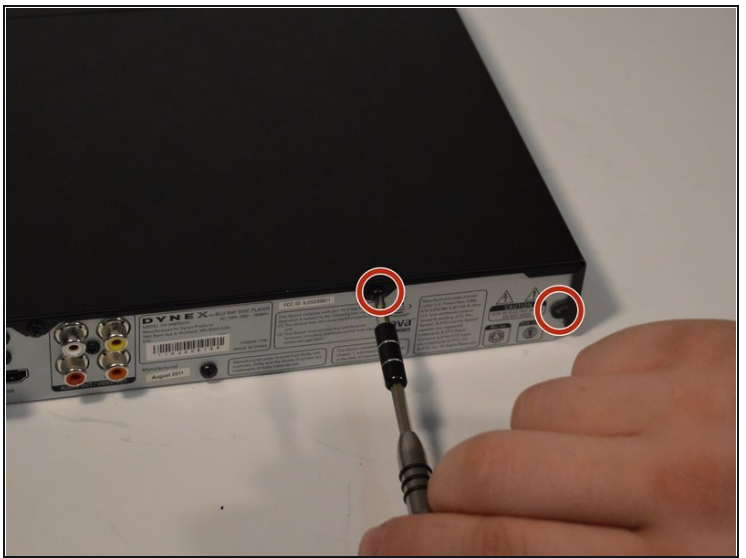
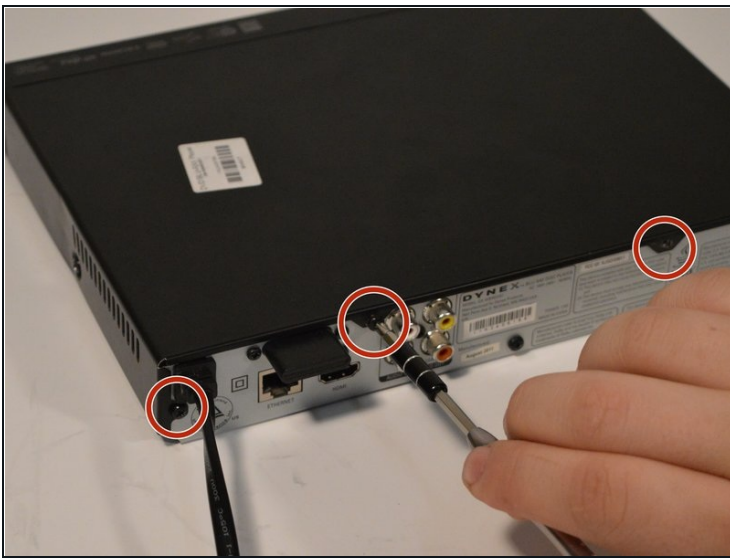
The motherboard is found below the WiFi antenna inside the device. This guide will take you through the steps of removing the motherboard for replacement.

TOOLS:

Phillips #1 Screwdriver (1)

Spudger (1)

Step 1 — Top Cover



- Remove the four 5mm Phillips #1 screws that connect the black outer shell to the silver back of the device.

Step 2



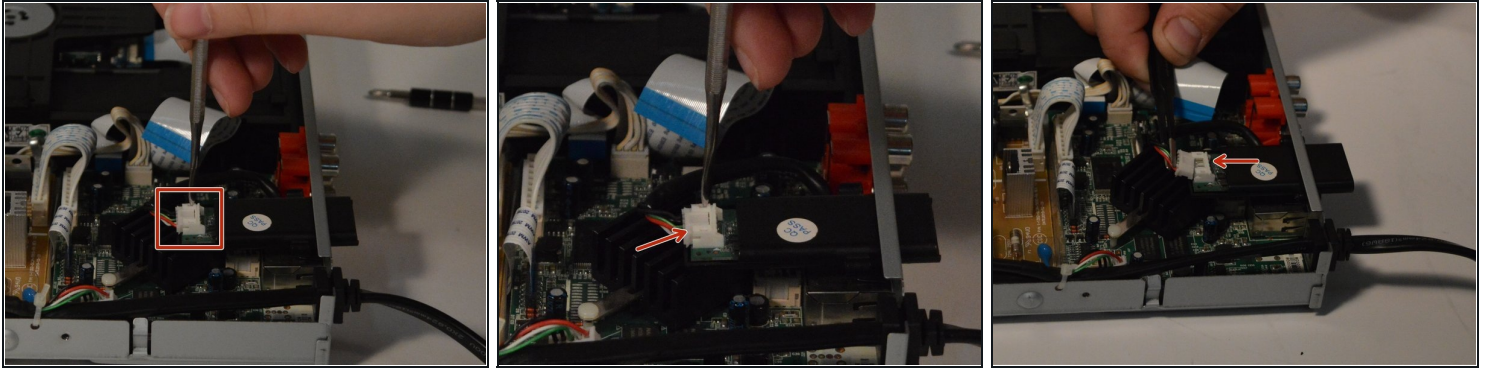
- Remove the two 5mm screws on the left and right side panels.
- ① There is one screw on each side that secures the cover to the body of the device.

Step 3



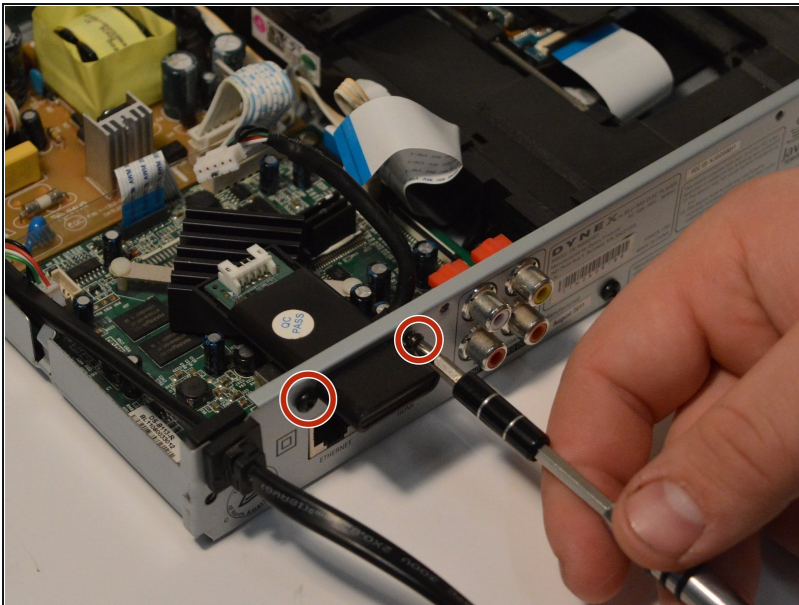
- Lift the black cover to a 45 degree angle from the rear of the device and pull the cover away entirely.
- ⚠ Check that the power cord is not preventing the device from opening or closing.

Step 4 — WiFi Antenna



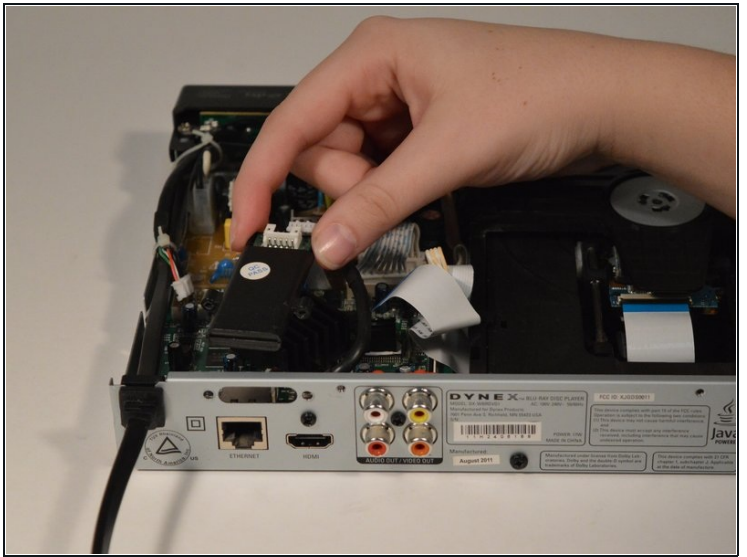
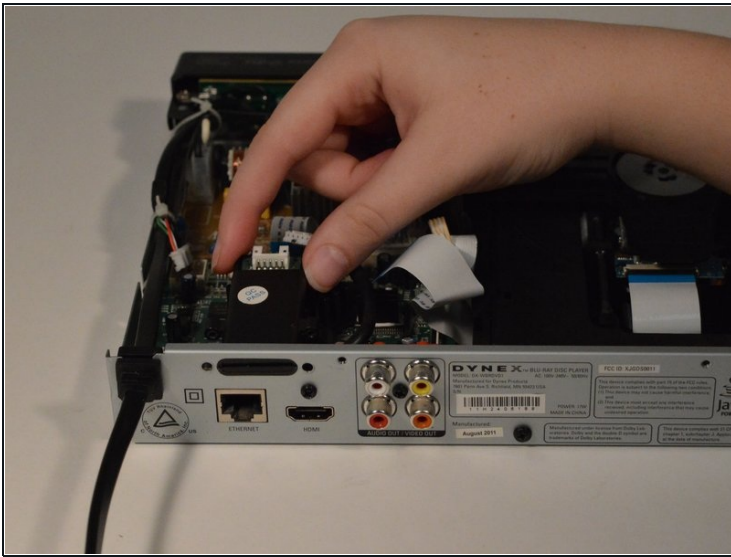
- Use the metal spudger to remove the white clip from the antenna by prying the clip away from the antenna.
- ① Use a pointed tool and press down on the indents on both sides of the clip to loosen.

Step 5



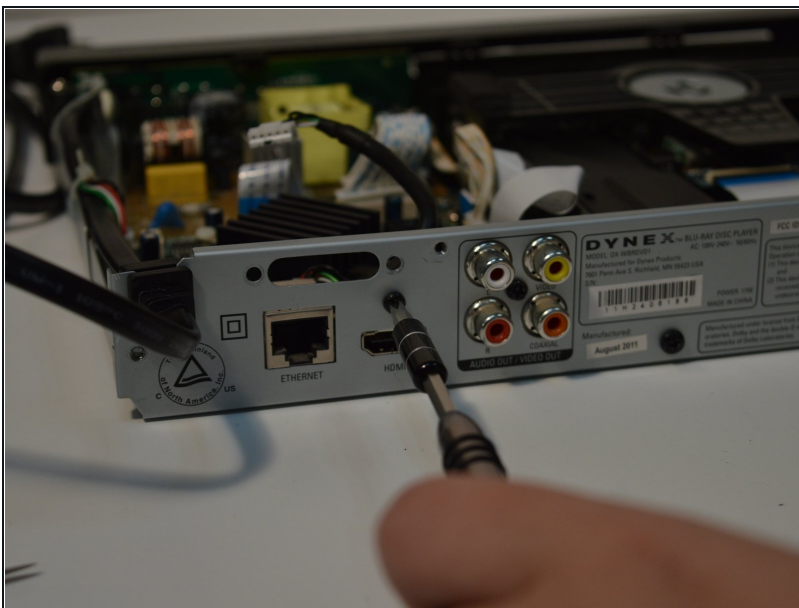
- Remove the two 7mm screws from both sides of the antenna.

Step 6



- Slide the antenna inwards and gently remove.

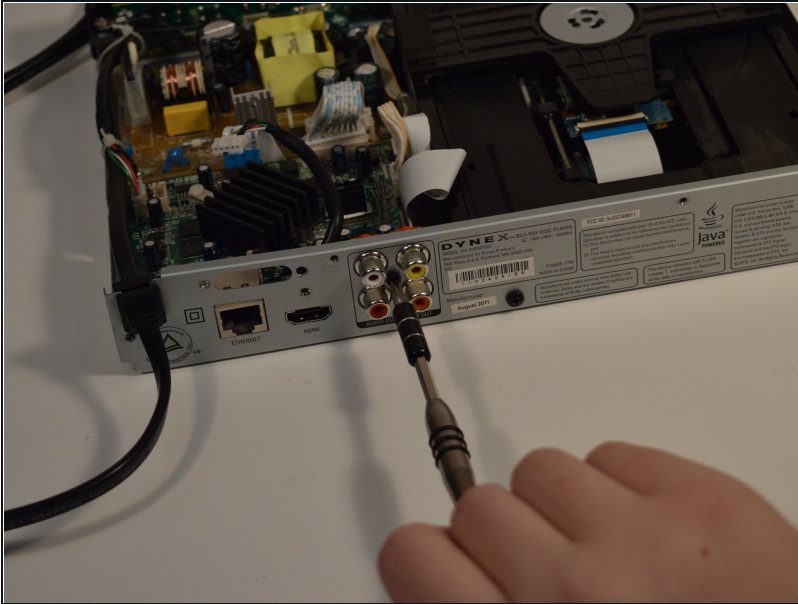
Step 7 — Motherboard



- After removing the antenna, remove the hdmi screw (5mm)

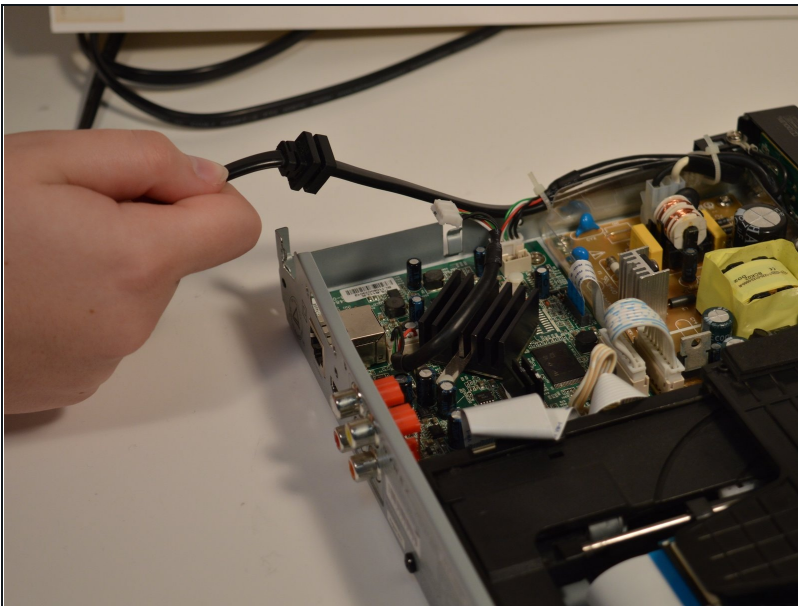
ⓘ Fine threaded

Step 8



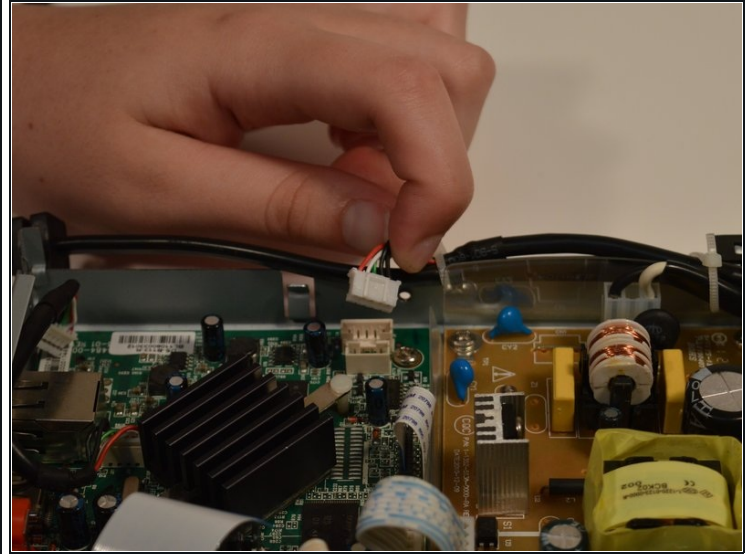
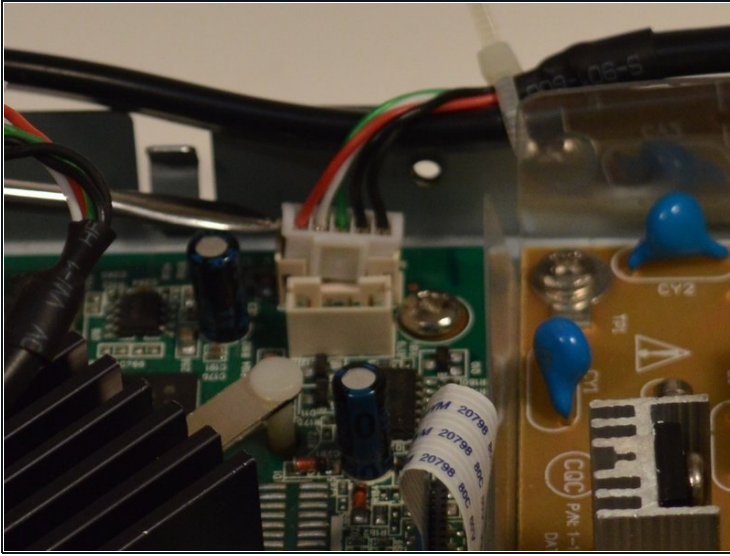
- Remove component screw (7mm)
- ① Corse thread

Step 9



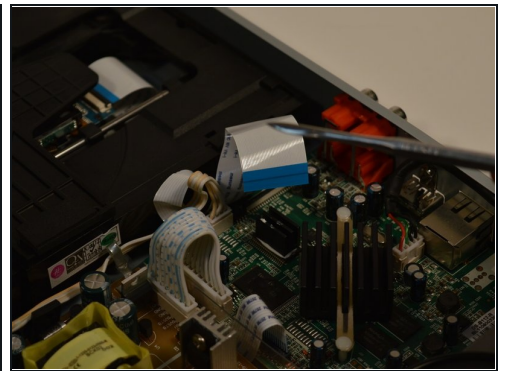
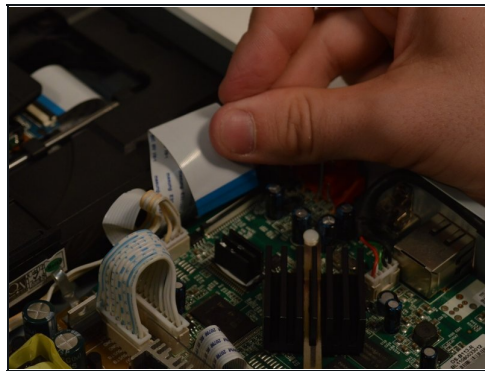
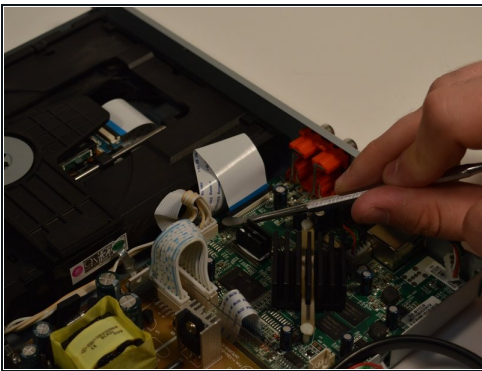
- Lift power cord and move to the side

Step 10



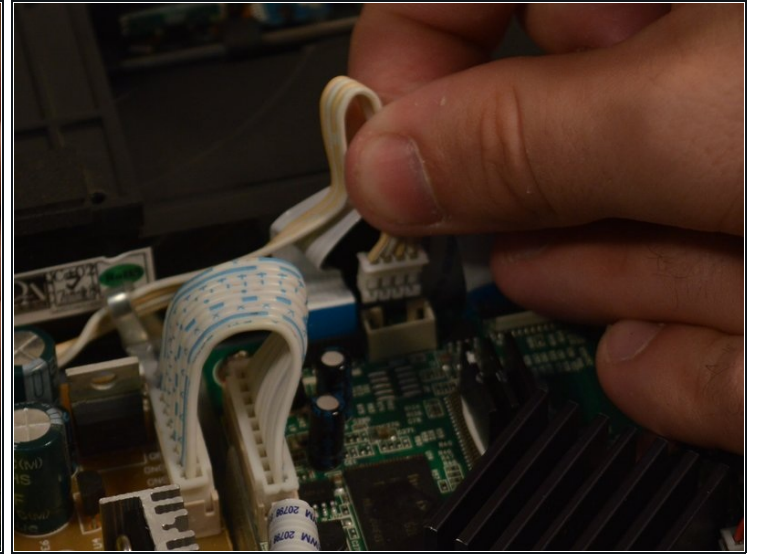
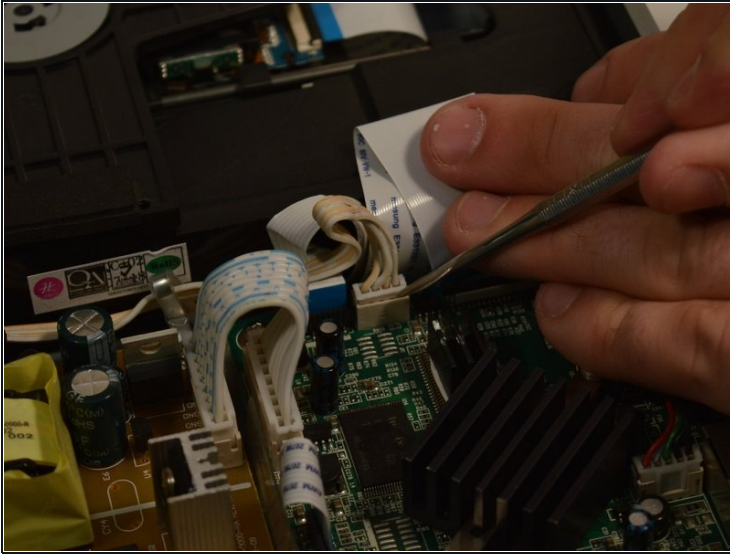
- Remove the white clip with colored wires from mother board.
- ① Use a pointed tool and press in on the sides of the clip to release.

Step 11



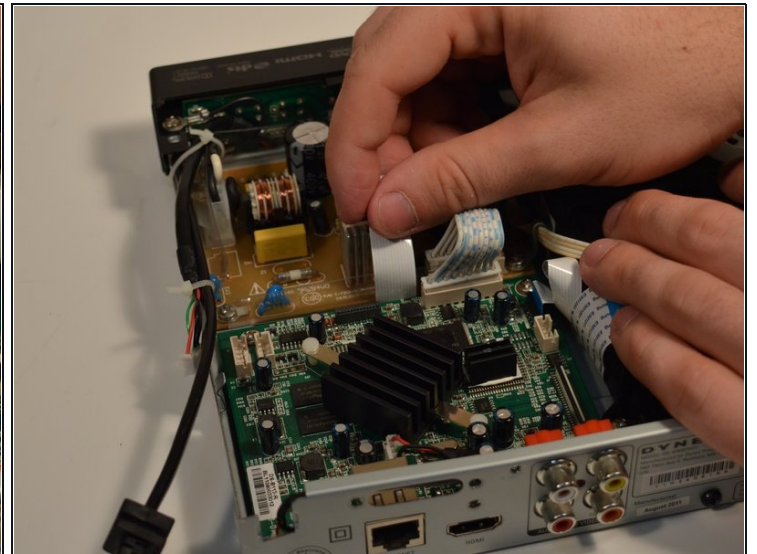
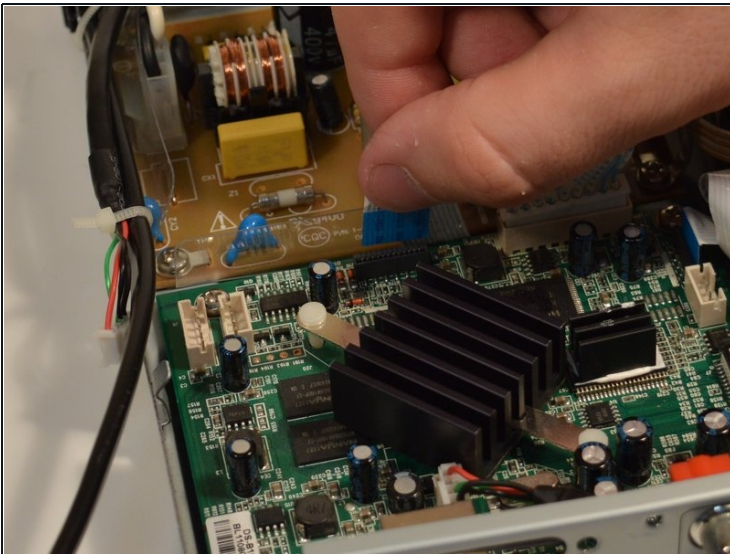
- Lift up and out to remove the large white plastic wiring strip. Lift lightly on the back clip holding it to loosen.

Step 12



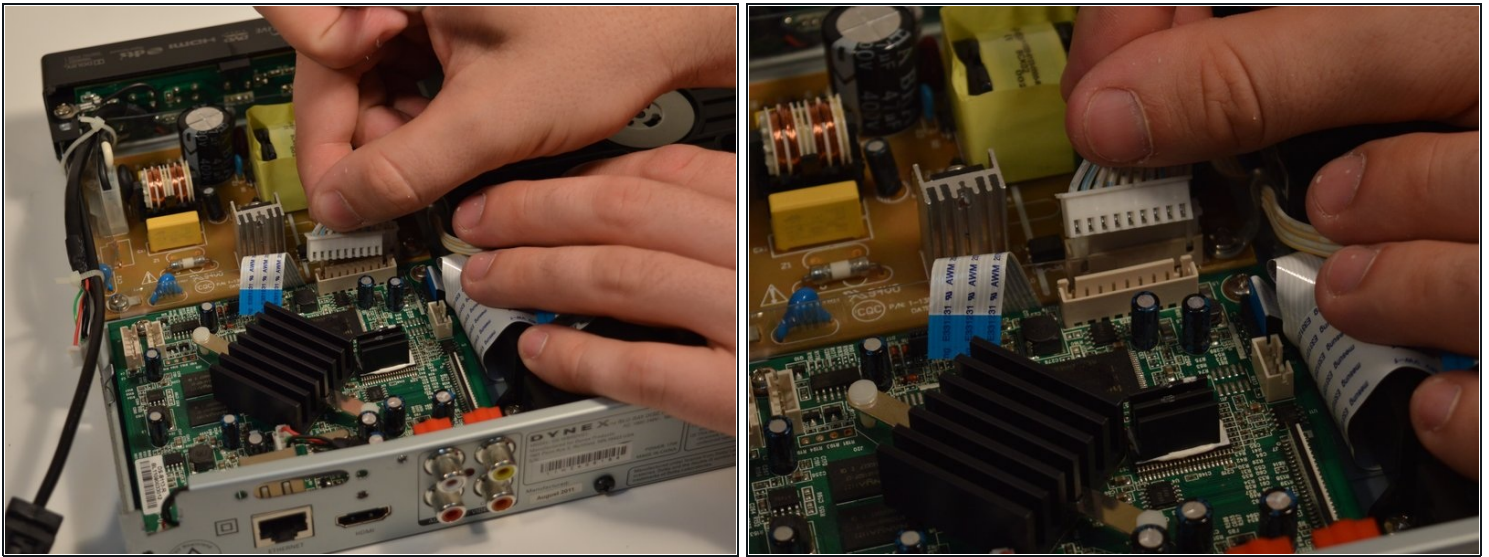
- Remove the power connection to the motherboard small white clip with 4 white wires coming out.
- ① Press sides and pull up the edges with sharp tool

Step 13



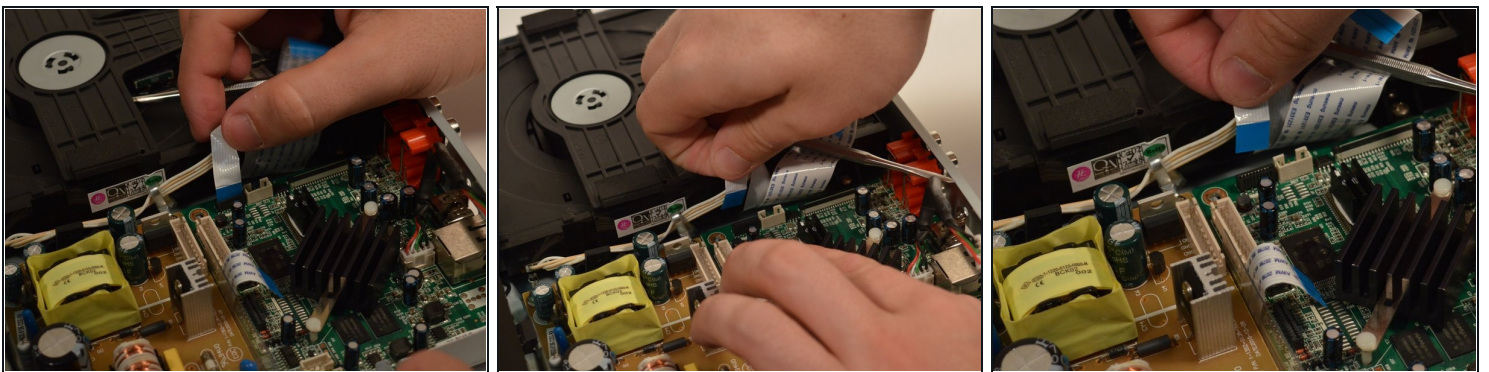
- Pull the 1cm white tab straight up and out.
- ① The side with exposed wires points towards the face plate.

Step 14



- Pull the larger white 9 pin power cord that connects the power board to the motherboard.

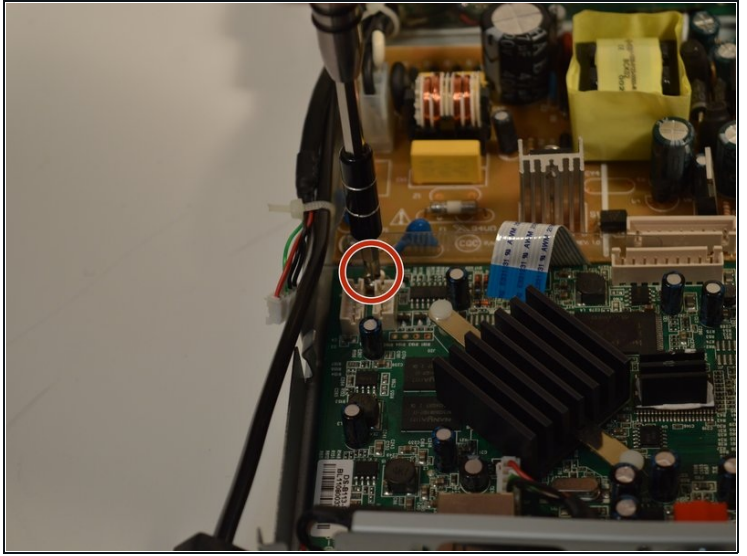
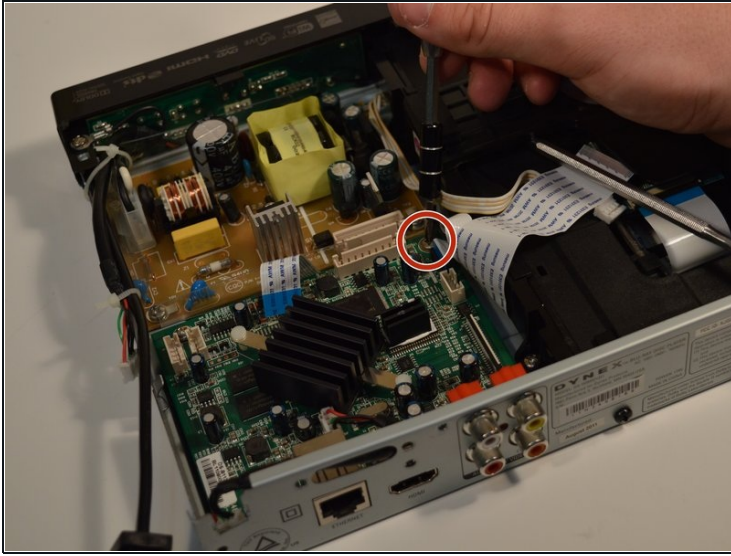
Step 15



- Pull the second white 1cm wide tab between the motherboard and power supply board.

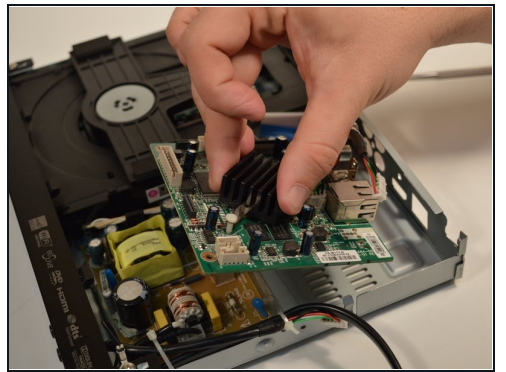
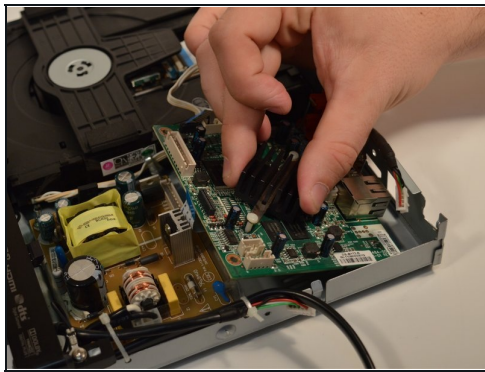
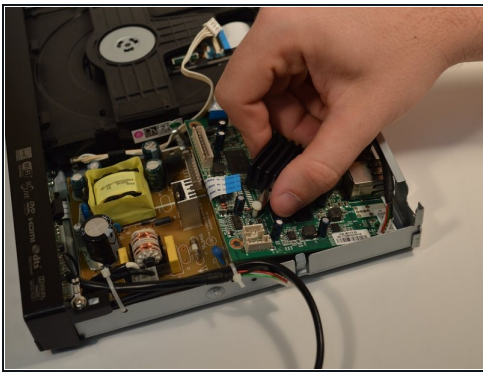
① The side with exposed wires points towards the disc drive.

Step 16



- Remove the two 5mm screws that connect the mother board to the device.

Step 17



- Slide board up and out at a slight angle

To reassemble your device, follow these instructions in reverse order.