



Garmin GPSmap 60CSx Screen Replacement

If the screen remains blank while the device is...

Written By: Thomas Humphrey



INTRODUCTION

If the screen remains blank while the device is turned on, is cracked and unable to be used, or remains unresponsive, the screen may be broken and need to be replaced. The following are steps on how to replace the screen of the Garmin GPSmap 60CSx.

TOOLS:

[Spudger](#) (1)

[Tweezers](#) (1)

[Phillips #0 Screwdriver](#) (1)

Step 1 — Back Cover and AA Batteries



- Lift and twist the battery cover release 90 degrees counterclockwise on the back of the device.

Step 2



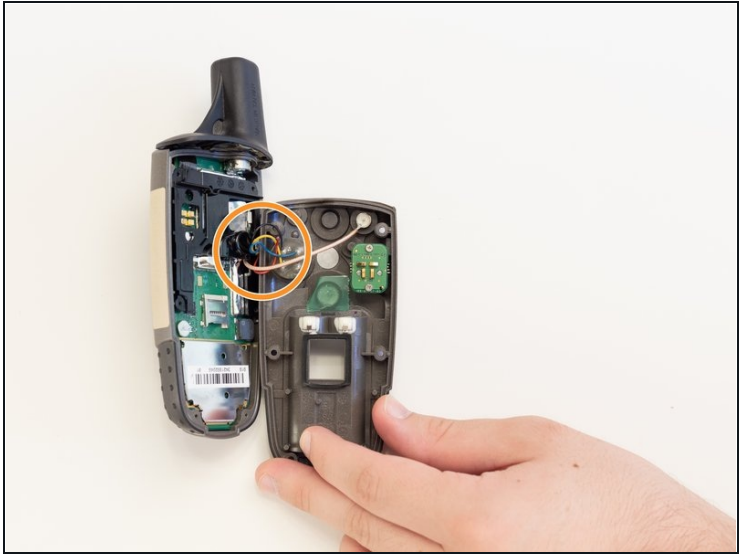
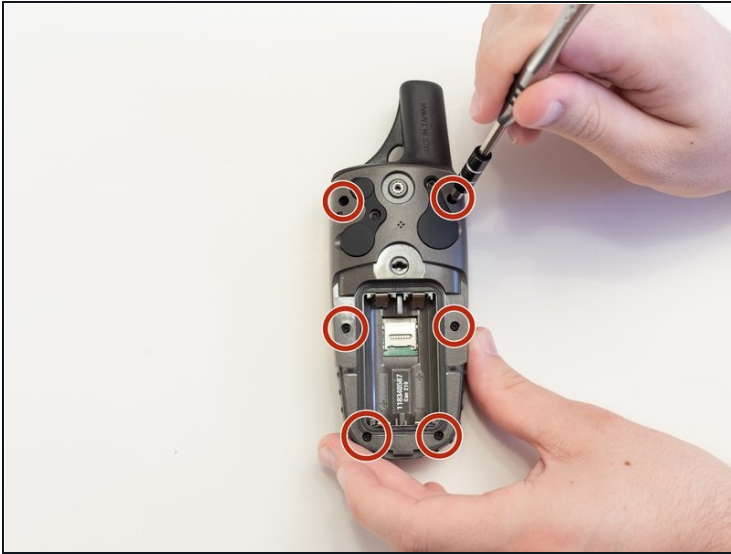
- Lift battery release up to remove battery cover.

Step 3



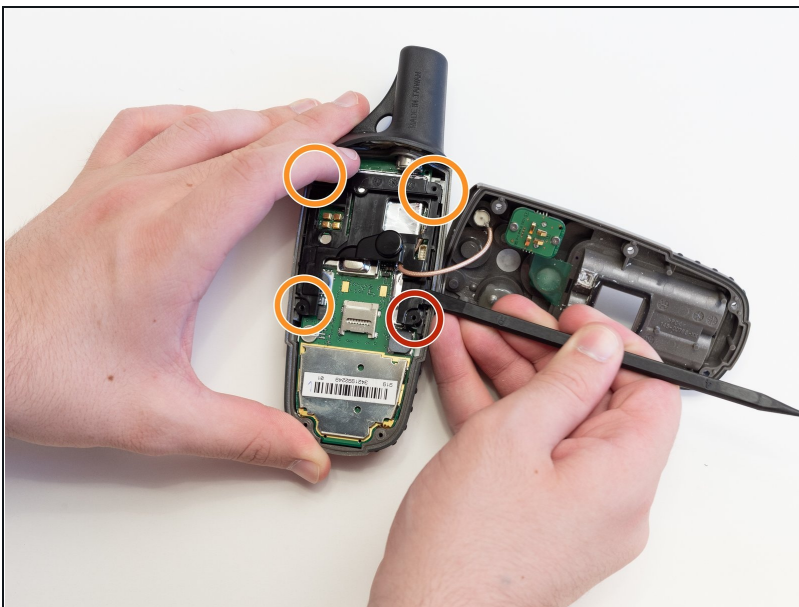
- Pull AA batteries out.

Step 4 — Screen



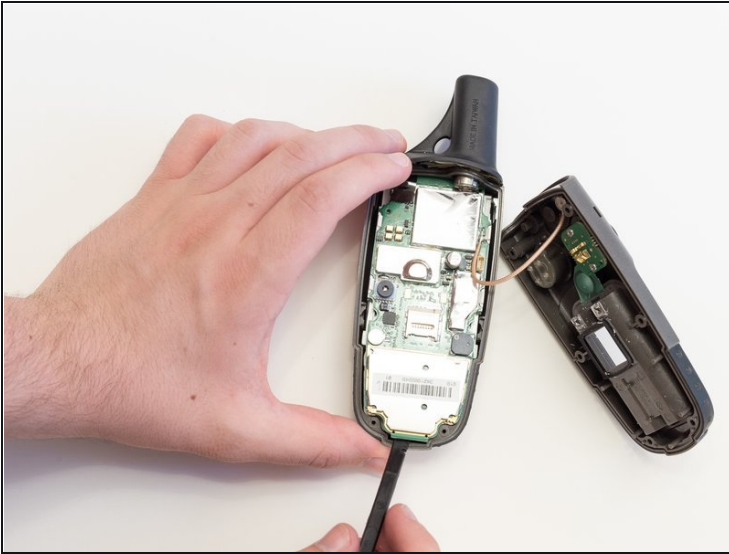
- Remove the six 10 mm screws on the back of the device with a Phillips #0 Screwdriver.
- Flip the back panel over to view the green electronics board (the PCB) and the PCB cover.
- Remove the black, yellow, blue, and red wires connected to the PCB with light force.

Step 5



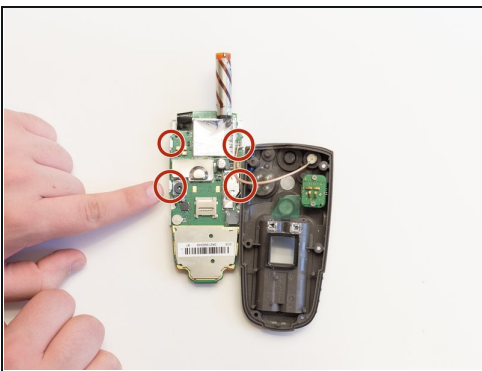
- Take the spudger and place it in the bottom right corner of the black PCB cover.
- Use the spudger to pry the corner out. This will need to be done to all four corners of the PCB cover.
- ⓘ It is best to do remove the bottom corners first.
- Pull the PCB cover out of the GPSMap 60CSx.

Step 6



- Carefully use the spudger to lift the PCB a few centimeters.
 - Pull the PCB towards the bottom of the GPSMap 60CSx.
- ⓘ This will pull the other components out of the GPSMap 60CSx like the antenna and the screen.

Step 7



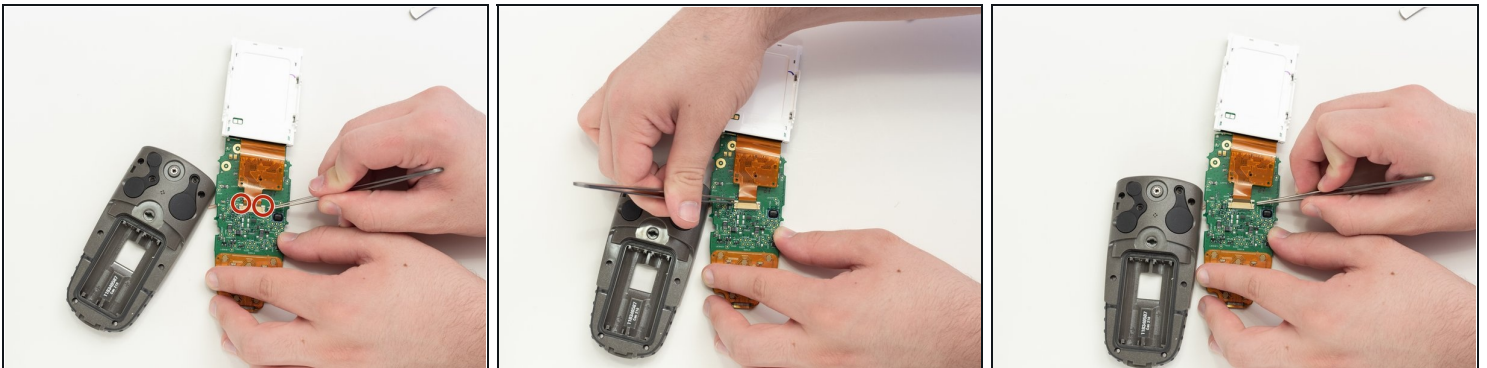
- Apply light pressure to the four white tabs that are holding the screen in place.
- The screen will now come off the PCB.

Step 8



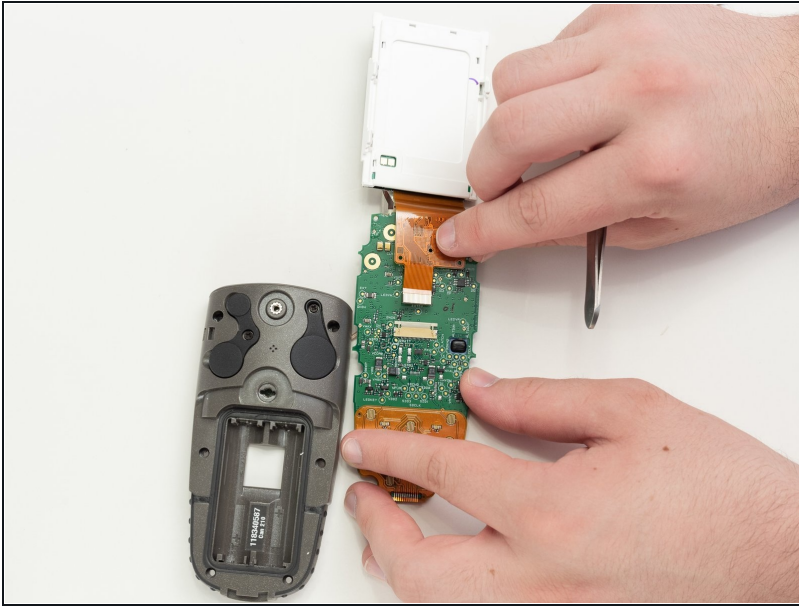
- Turn the PCB over so the screen connector is facing you.
- Move the screen out of the way for access to the screen connector.

Step 9



- Use [tweezers](#) to pull the two white pins on the connector forward.

Step 10



- Remove the screen ribbon connector and screen.

To reassemble your device, follow these instructions in reverse order.