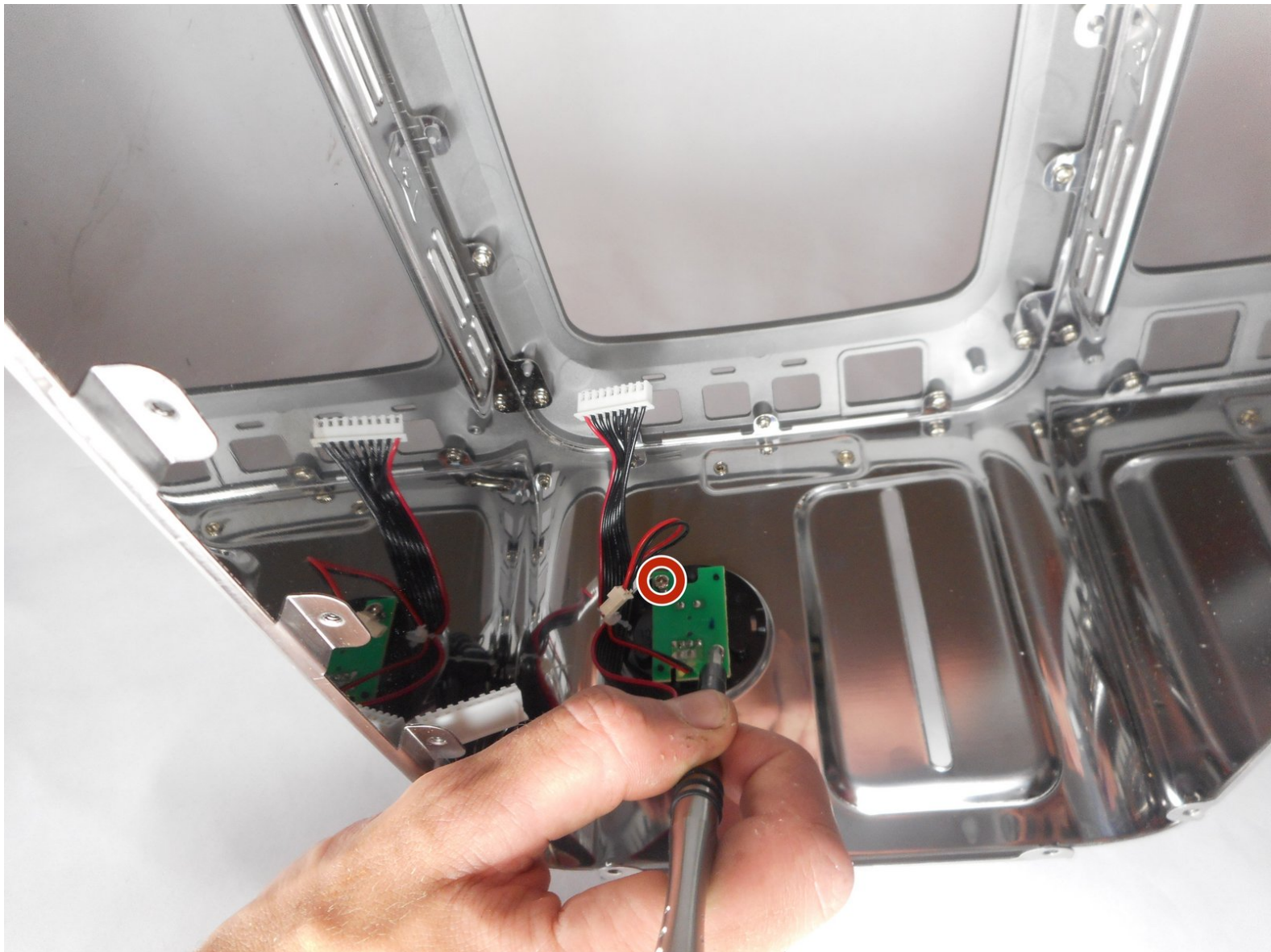




Wolf Gourmet WGTR102S Heat Dial Replacement

Guides users through replacement of the heat dial on the Wolf Gourmet WGTR102S toaster.

Written By: Ryan Funchess



INTRODUCTION

If the toaster is not responding to the heat dial, try replacing the circuit board with this guide.



TOOLS:

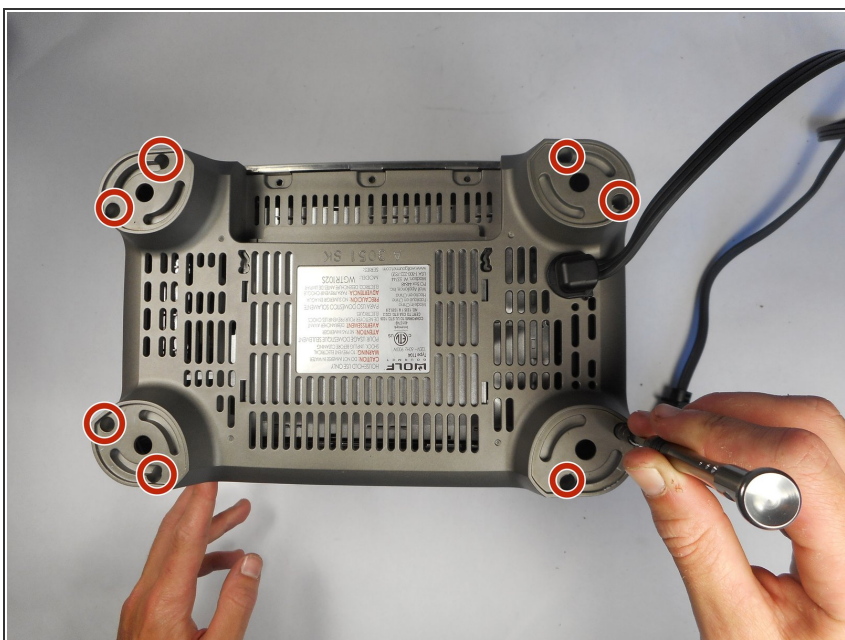
- [Y1 Tri-point Screwdriver](#) (1)
 - [Metal Spudger Set](#) (1)
-

Step 1 — Outer Shell



- Using a wedge, pry off the rubber pieces on the bottom of each foot of the toaster.

Step 2



- Remove the eight 8mm screws on each toaster foot using a Tri-point Y1 screwdriver.

Step 3



- Remove the crumb collector located on the bottom of the toaster.

Step 4



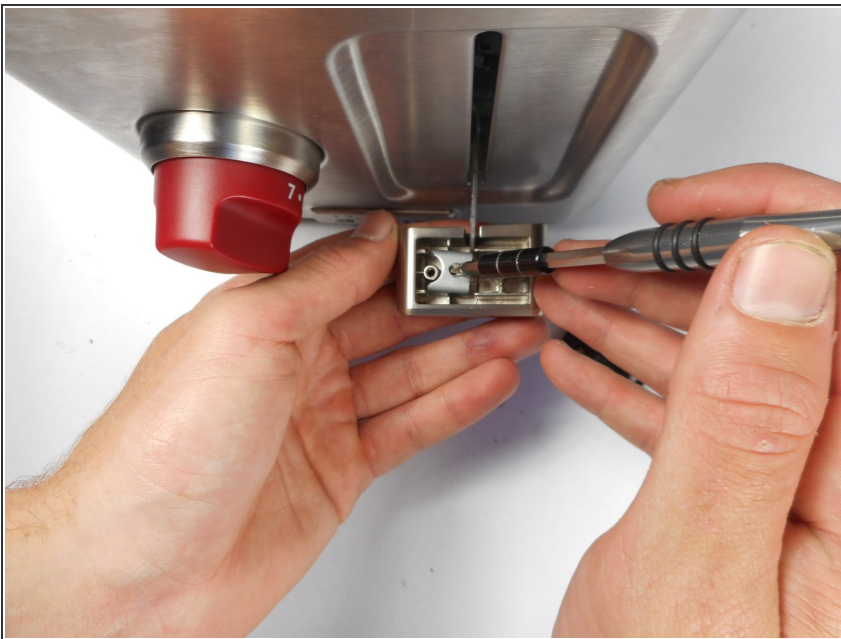
- Remove the three 8mm screws using the Tri-point Y1 screwdriver.

Step 5



- Remove the two 8mm screws on the bottom of the slide lever using a Tri-point Y1 screwdriver.
- Once the screws are removed, detach the black plastic cover on the bottom of the slide lever.

Step 6




- Remove the final 8mm screw in the slide lever.
- The lever can now pull away from the entire unit.

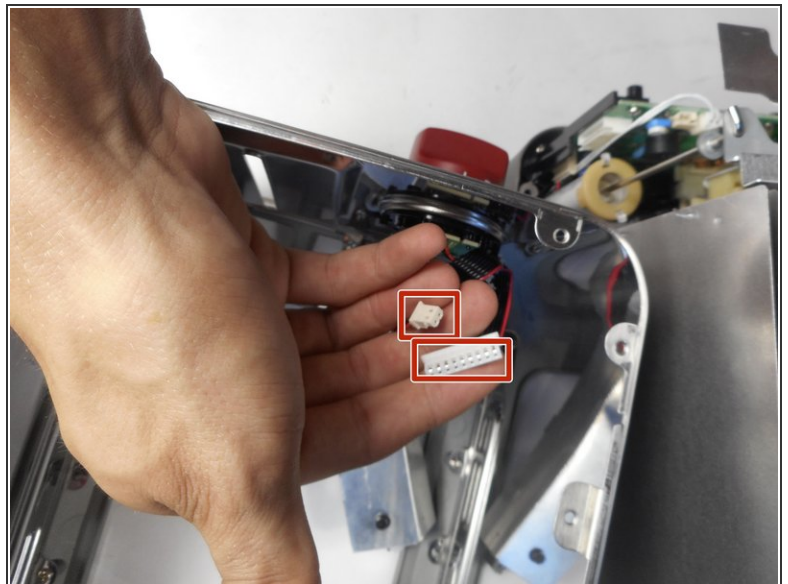
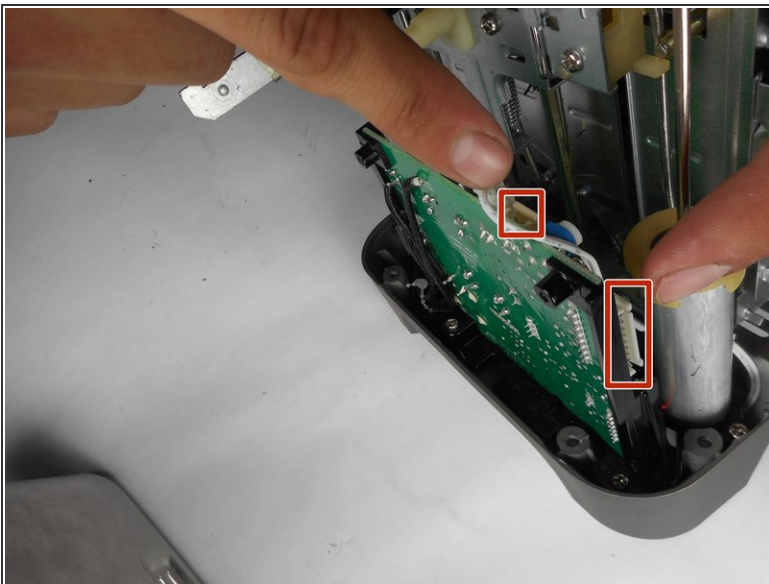
Step 7



- Remove toaster's outer shell by lifting straight up.

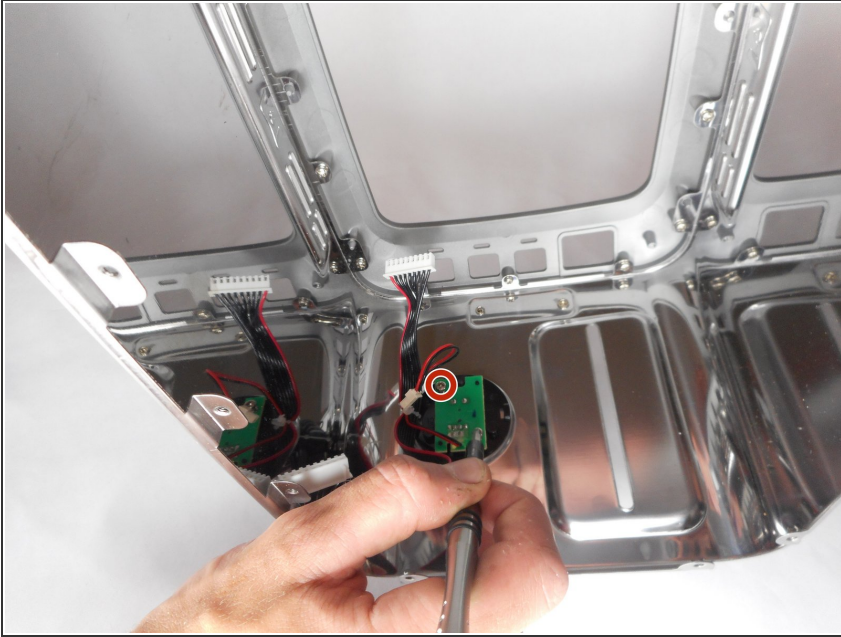
 Slowly remove the outer shell. Disconnect ground wire before fully separating the shell and inner components.

Step 8



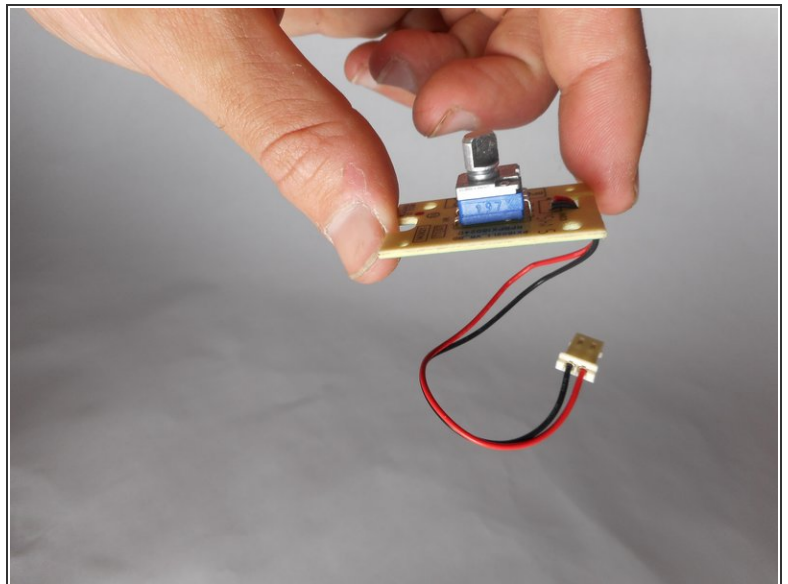
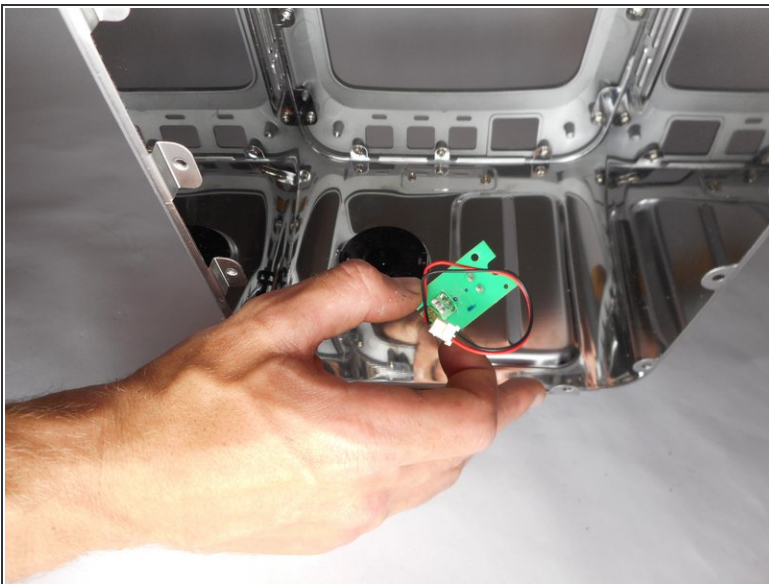
- Disconnect the wire cluster that connects the lights and circuit board by pulling apart the two plastic connectors.
- Remove the outer shell from the device.

Step 9 — Heat Dial



- Remove the two 4mm screws found on each side of the circuit board using a Tri-point Y1 screwdriver.

Step 10



- Remove the circuit board from the device.

To reassemble your device, follow these instructions in reverse order.