



# Presidential Recline Cylinder Replacement

This guide will show you how to remove and install a new recline cylinder.

Written By: Nick





## TOOLS:

- [Cordless Drill](#) (1)
- [Slip Joint Pliers](#) (1)
- [Vice Grips](#) (1)
- [Zip Ties](#) (1)
- [Small hammer](#) (1)
- [Flush Wire Cutters](#) (1)
- [Phillips #2 Screwdriver](#) (1)

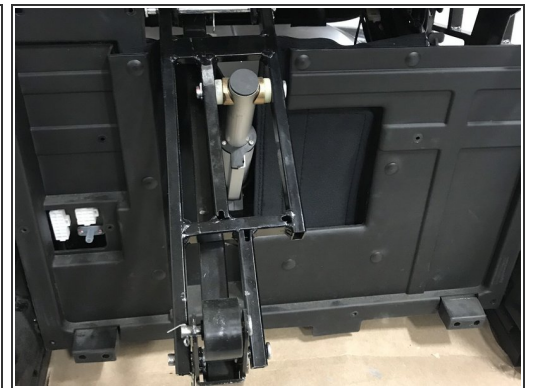
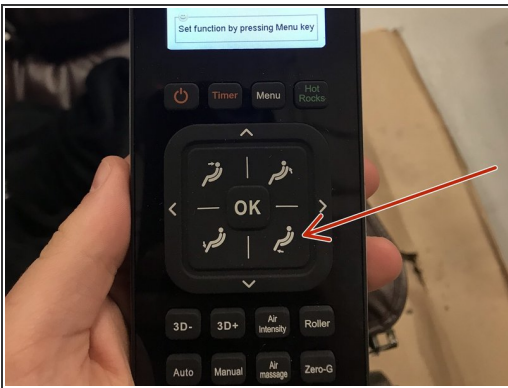
## Step 1 — Recline Cylinder



- Remove the 2 bolts from the back cover and back cover should come off .

**⚠ THIS BACK PANEL HAS PLASTIC CLIPS THAT RIDE DOWN THE EDGES AND THESE SLIDE INTO METAL HOLDERS. PLEASE USE CAUTION WHEN REMOVING.**

## Step 2



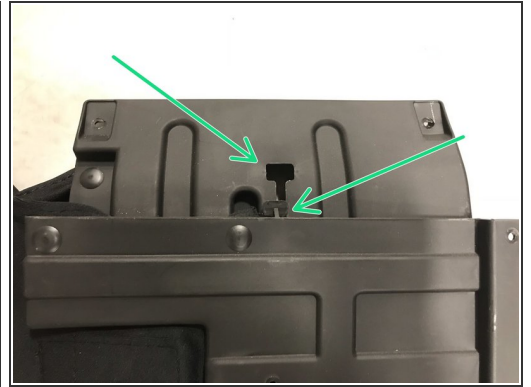
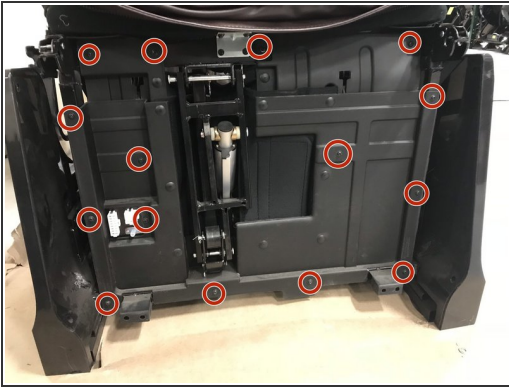
**i** Before continuing please raise footrest cylinder using the remote control.

- Press & hold this button to raise the actuator .
- If using the Older style remote press & hold this button to raise the actuator .

**i** the actuator doesn't need to be fully raised only a quarter of the way or enough to slide the panels out.

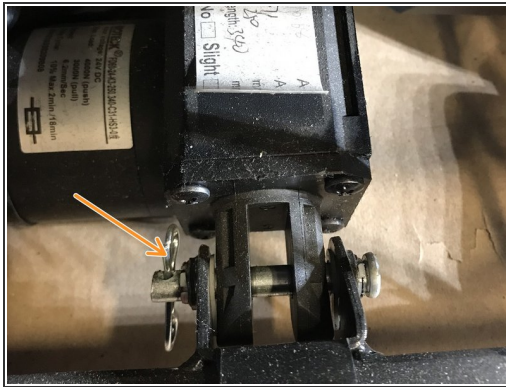
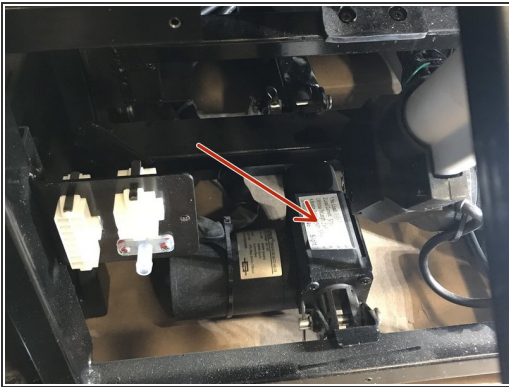


### Step 3



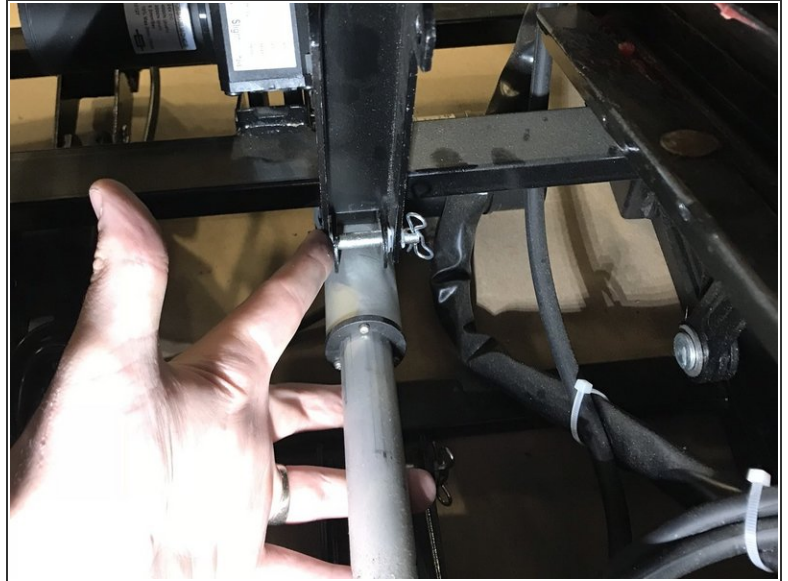
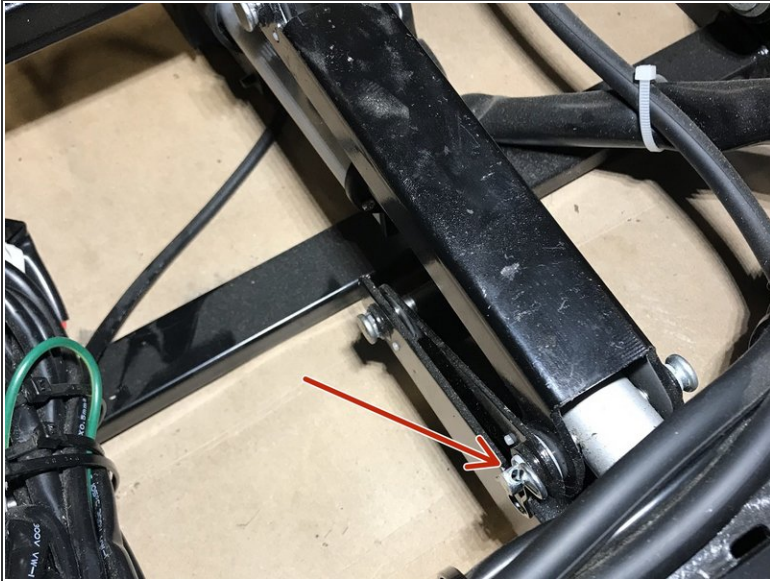
- Remove all 15 screws .
- This cover comes off the frame as one piece , but it is actually two separate pieces. Here is where the plastic tabs line up.
- plastic tab and entry point.

### Step 4



- This is the recline cylinder . It is located on the lower left hand side of the chair from the front.
- Remove cotter pin. Set this aside as this will be reused for reassembly.
- Using a Small hammer LIGHTLY tap the bolt out of the cylinder mount point. Once its at the point shown in the photo you can use pliers or vice grips to pull it out.

## Step 5



**i** Please move to the rear of the chair to access the other mount point. The mount point is the closest one to the rear of the chair. IGNORE THE MIDDLE MOUNT POINT .

● Remove the cotter pin from the bolt.

**!** this rear bolt should come out using hand strength. if tools are needed use pliers or vice grips .



## Step 6



- Follow cylinder wire to bundle of wires.
- ⓘ Cut all zip ties needed in order to access wires.
- Follow wire until you find main connector.
- Next find and disconnect the secondary cable going to the cylinder , it is in the same bundle of wires.

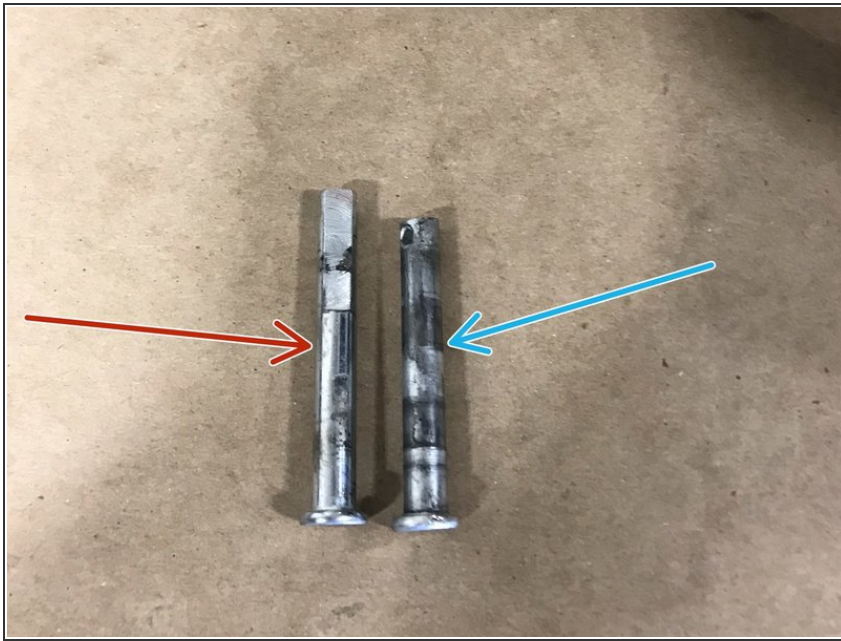
## Step 7



ⓘ ALL DONE ! . SEE NEXT STEPS FOR REASSEMBLY TIPS.

⚠ Once the cylinder is free of wires and mount points you need to remove it from the rear of the chair . it will NOT come out the front side.

## Step 8 — Reassembly

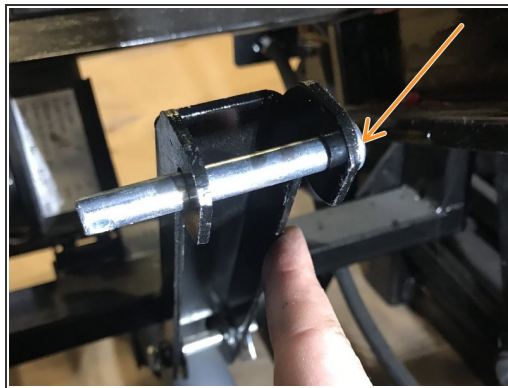
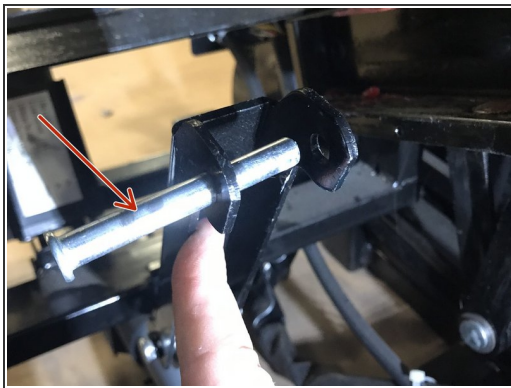


- This is the bolt for the Rear mount , notice how it is grooved on one side.

- This is the bolt for Front mount.

⚠ THIS REAR PIN NEEDS TO BE INSTALLED BEFORE THE FRONT PIN. IF YOU DO THE FRONT FIRST THE REAR WILL NOT ATTACH AT ALL.

## Step 9

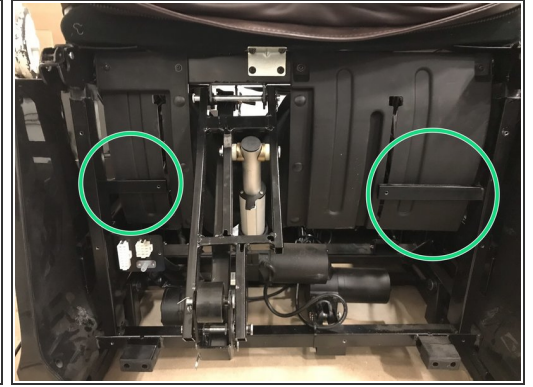
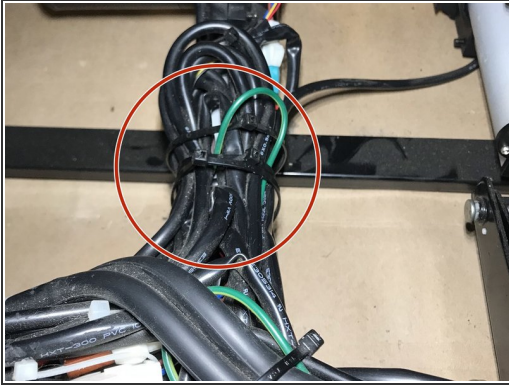


- This is an example of the **incorrect** side to insert the rear bolt.

- This is an example of the correct side to insert the rear bolt

ⓘ Note the left side of the bracket is cut a certain way keep this in mind when installing new cylinder.

## Step 10



- These zip ties cannot be installed tightly as they are mounted to a moving cylinder . If they are over tightened it will damage the slide cylinder and wires. Keep the zip ties loose, but not too loose. Test the recline with all covers are off and watch these wires as the chair slides forward.
- Remember this zip tie that holds the footrest data cables to the cylinder . This shouldn't have to be cut you can most likely slip it off of the cylinder. If not not cut and replace.
- When installing the front cover be sure the top portion is done first . Additionally it needs to be behind the brackets marked here. SEE STEP 3

To reassemble your device, follow these instructions in reverse order.