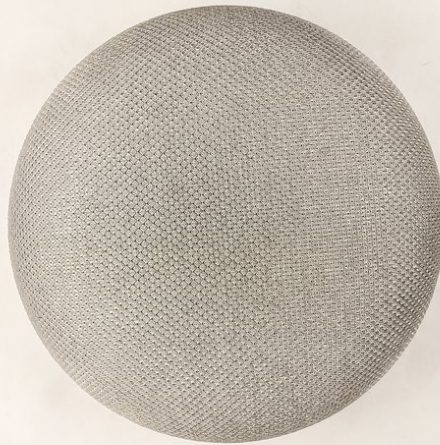




Google Home Mini Speaker Replacement

Replace faulty speaker in Google Home Mini.

Written By: Mia Sulaiman



INTRODUCTION

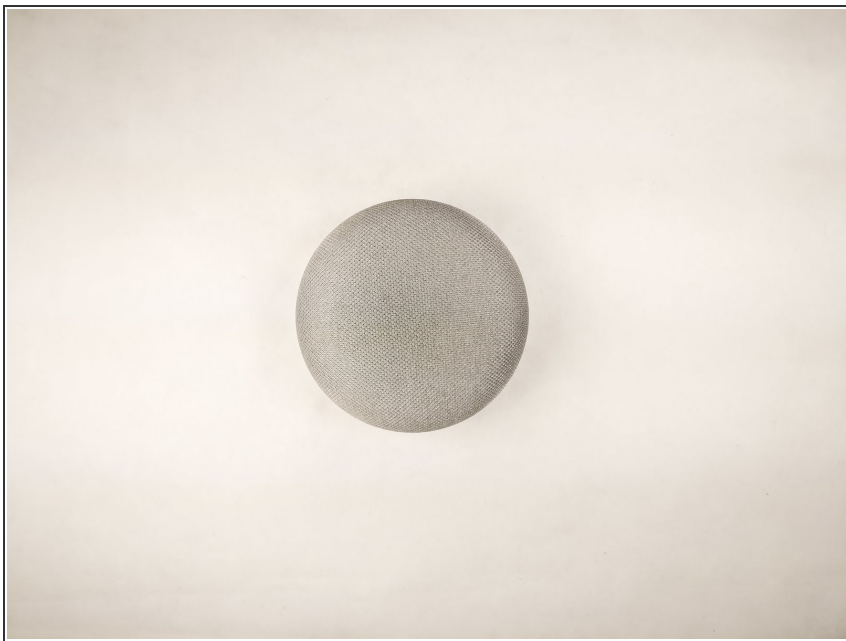
A guide to replace the speaker for Google Home Mini.



TOOLS:

- [Tweezers](#) (1)
 - [T6 Torx Screwdriver](#) (1)
 - [T8 Torx Screwdriver](#) (1)
-

Step 1 — Google Home Mini Disassembly



- Place device on a flat surface.

Step 2



- Remove the rubber bottom as per the [Google Home Mini teardown guide](#).
- Remove the four 7mm T6 Torx screws from the bottom.

Step 3



- Remove the lower half of the device.

⚠ Be careful as a black ribbon cable connects the two halves together.

Step 4



- Using a pair of tweezers, unlatch the Zero Insertion Force (ZIF) fastener that connects the ribbon cable to the board.

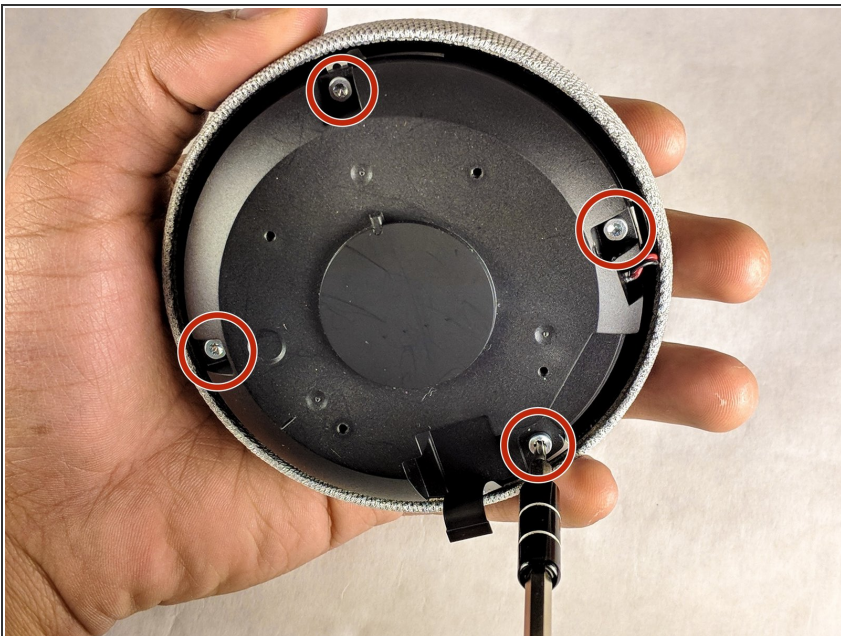
ⓘ Flip up and push the ZIF fastener towards outside of the lower case to loosen it.

Step 5



- Pull the ribbon cable off.


Step 6 — Speaker



- Remove the four 7.8mm T8 Torx screws.

Step 7



 The speaker will still be connected to the device.

- Using your fingers, disconnect the wires.

To reassemble your device, follow these instructions in reverse order.