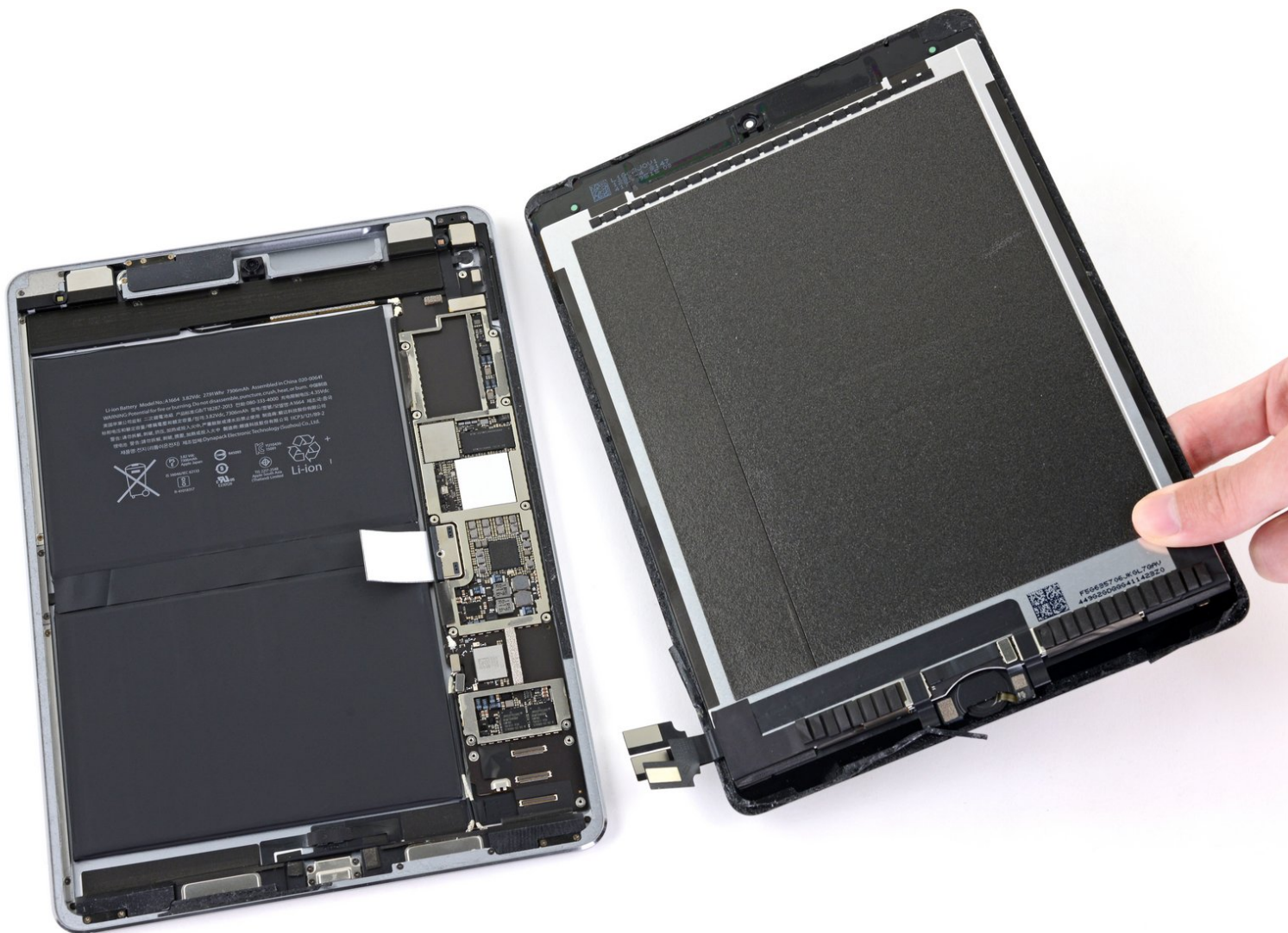




iPad Pro 9.7" Display Assembly Disconnect

Prerequisite only. This guide shows how to disconnect the iPad Pro's display assembly.

Written By: Arthur Shi



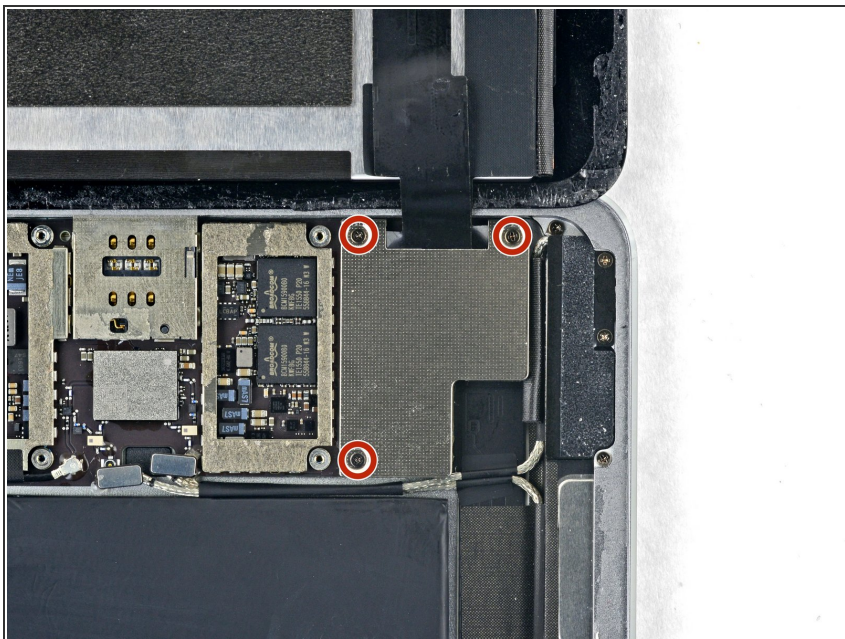
INTRODUCTION

Prerequisite only. This guide shows how to disconnect the iPad Pro's display assembly.

TOOLS:

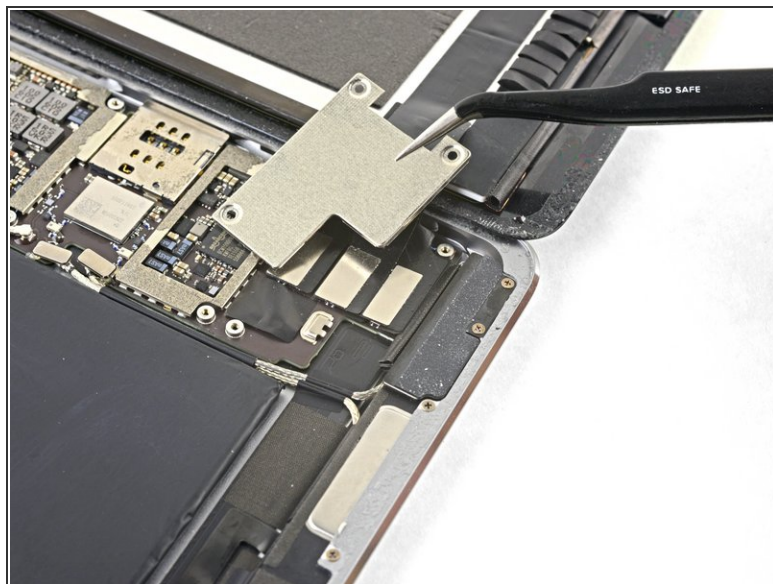
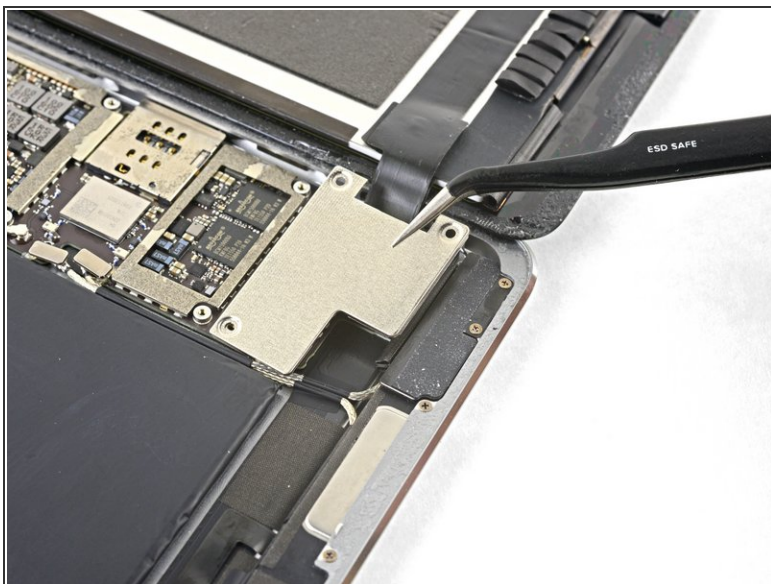
- [Tweezers](#) (1)
 - [Spudger](#) (1)
 - [Phillips #00 Screwdriver](#) (1)
-

Step 1 — Remove the display bracket screws



- Use a Phillips screwdriver to remove the three 1.3 mm Phillips screws securing the display cable bracket.

Step 2 — Remove the bracket



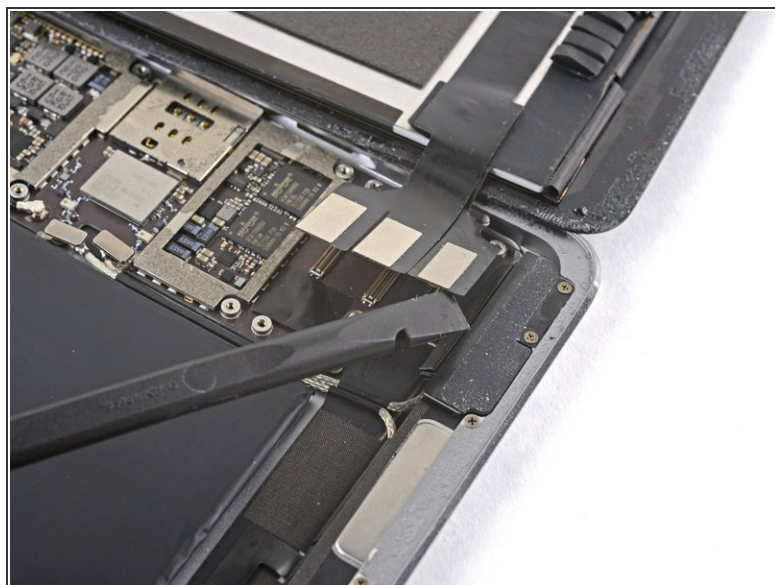
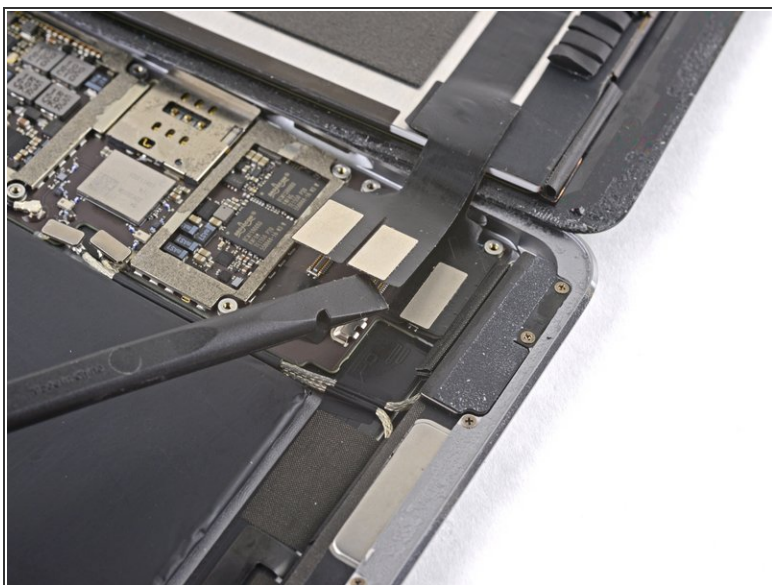
- Remove the display cable bracket.

Step 3 — Disconnect the display assembly



- Use the flat end of the spudger to disconnect the display assembly connector from the motherboard socket.

Step 4



- Repeat the previous step for the two remaining connectors.

Step 5 — Remove the display assembly



- Remove the display assembly from the frame.
- ☑ If you are reusing the original display assembly, [follow this display adhesive application guide](#) to apply replacement display adhesive during reassembly.

To reassemble your device, follow these instructions in reverse order.