



Dell Inspiron 1521 Display Assembly Replacement

The display assembly houses the LCD. This guide requires removal of the battery and keyboard, and the detaching some wires. Care must be taken not to damage any wires or connecting plugs.

Written By: Christopher McCormack



This document was generated on 2020-11-28 02:42:08 AM (MST).

INTRODUCTION

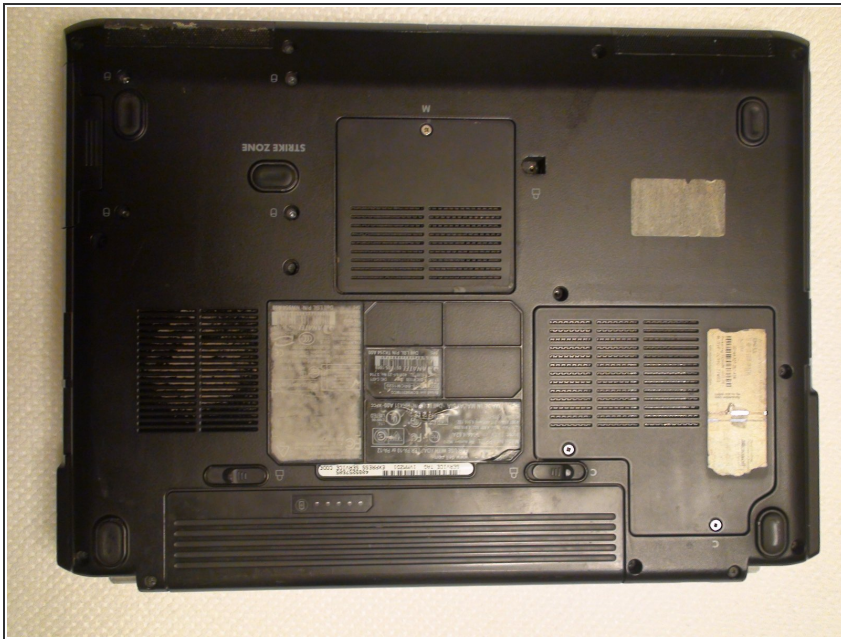
This guide will explain to you how to remove and replace the "lid" of the laptop, which contains the liquid crystal display (LCD screen).



TOOLS:

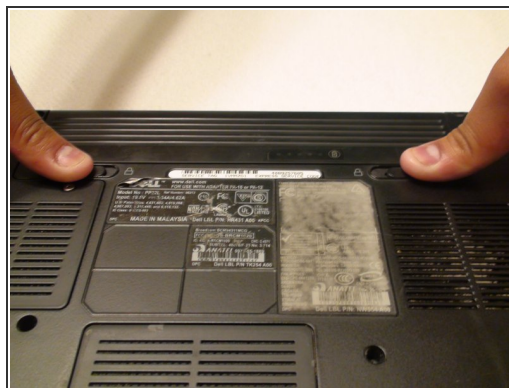
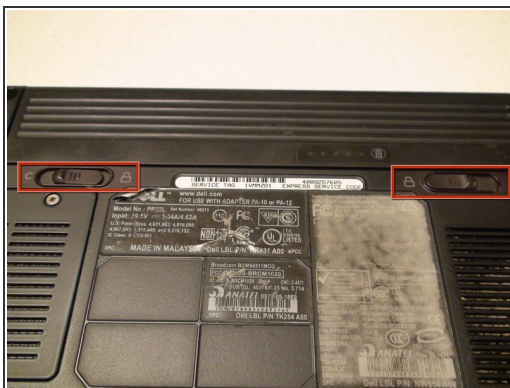
- [Phillips #1 Screwdriver](#) (1)
 - [iFixit Opening Tools](#) (1)
-

Step 1 — Battery



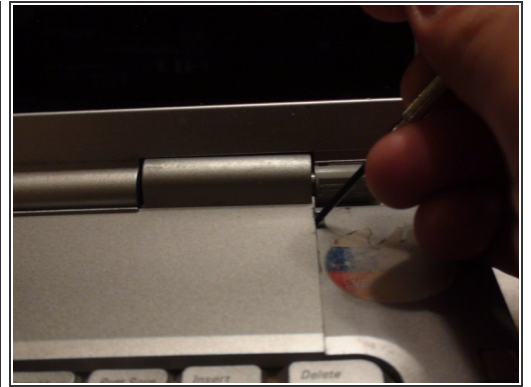
- Rotate the laptop so its bottom is facing up.

Step 2



- Identify the lock mechanisms holding the battery in place.
- Slide each button outward with your fingers to disengage the battery.
- Pull the battery off with your hand to separate it from the laptop.

Step 3 — Keyboard



- Find the two small indentations of the sides of the panel covering the power button.
- Pry up both sides of the panel by sticking the plastic opener tool in each indentation and prying up.

Step 4



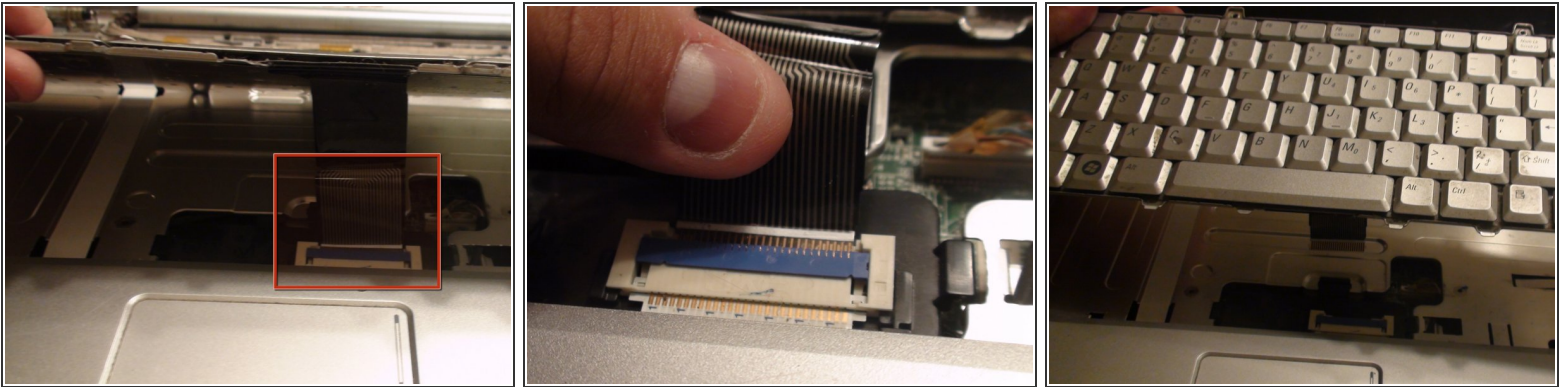
- Now that the panel is loose simply pull the panel off with your hand.

Step 5



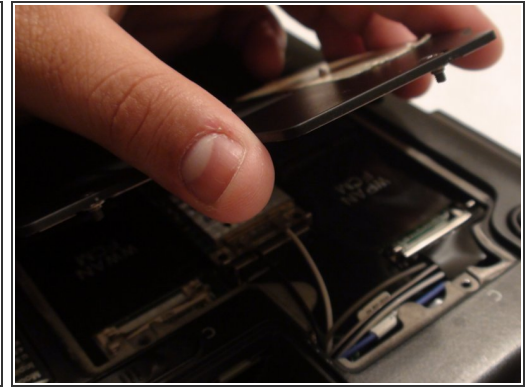
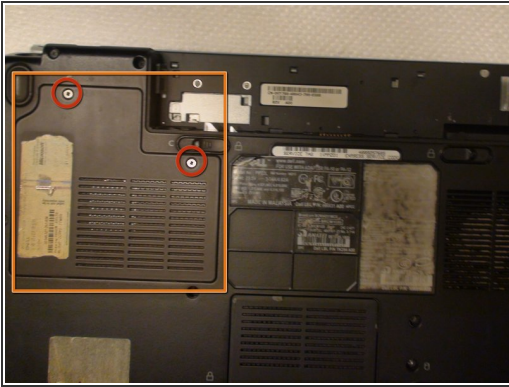
- Locate the two 5 mm Phillips #1 screws holding down the keyboard that were underneath the panel.
- Remove these screws with a Phillips #1 screwdriver.
- With the screws removed pull the keyboard up with your hand.

Step 6



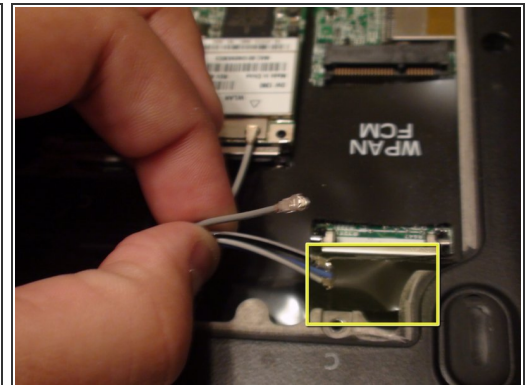
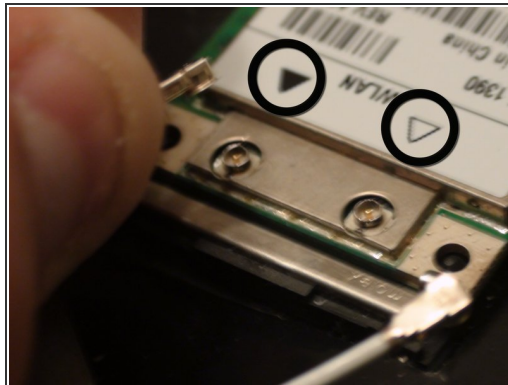
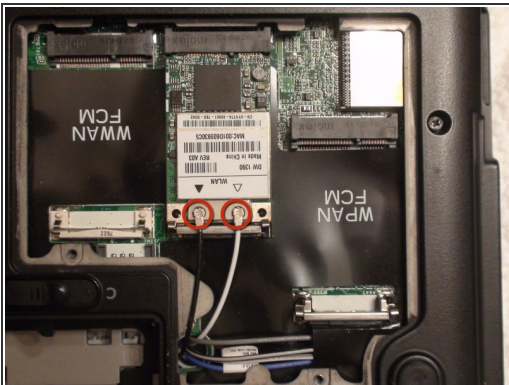
- Locate the connector that links the keyboard to the laptop.
- Gently pull the connector toward the screen of the laptop with your fingers to disconnect it.

Step 7 — Display Assembly



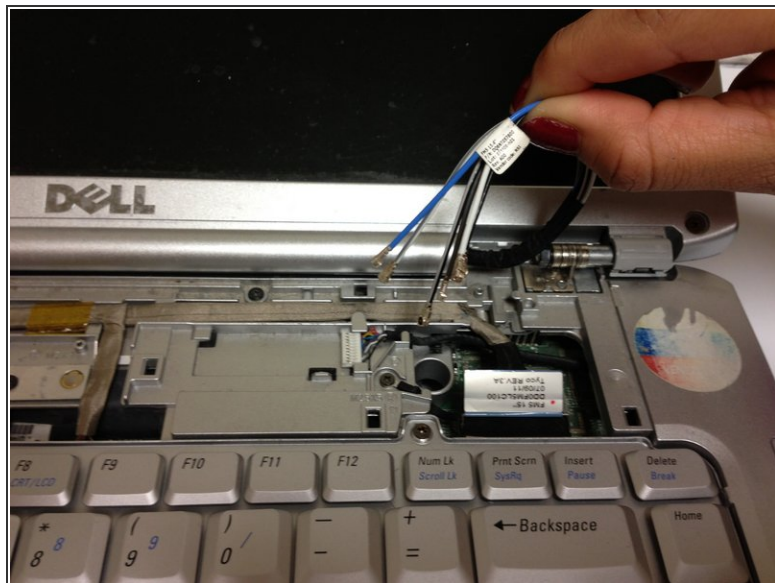
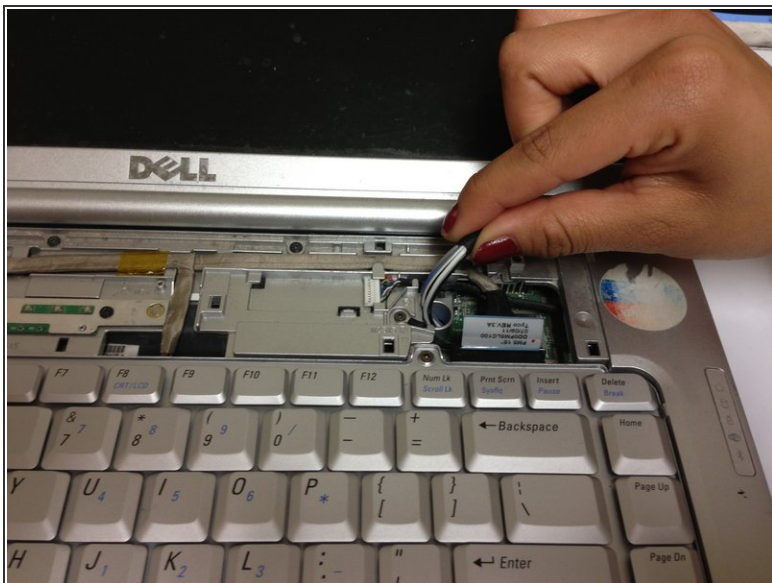
- Locate the two Phillips #1 screws holding the Wireless Local Area Network (WLAN) panel in place.
- Remove these two screws with a Phillips #1 screwdriver.
- Remove the WLAN panel by pulling it up with your hand.

Step 8



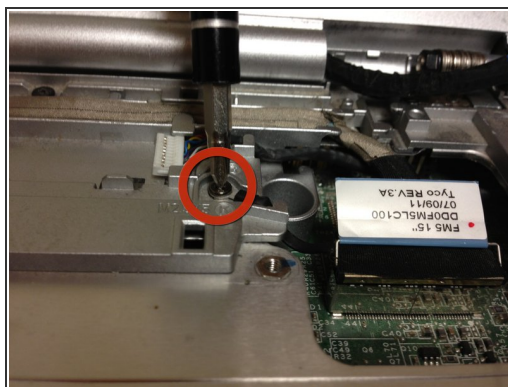
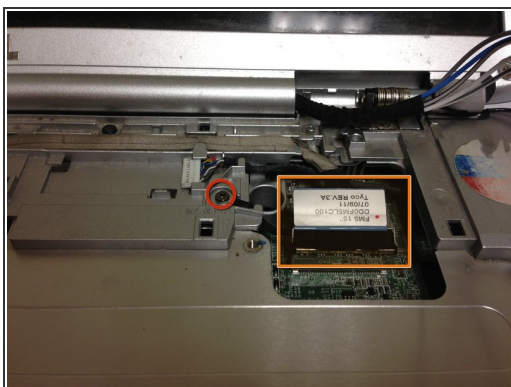
- Disconnect the black and white wires attached to the WLAN card by pulling up on the connectors with your fingers.
- ☑ During reassembly, the black and white wires reconnect to the WLAN card near the black and white triangles, respectively.
- Remove the remaining wires from their protective sleeve by hand.
- ☑ The wires in the sleeve are only used in other Dell laptop models. During reassembly they do not connect to anything so just place them back into the sleeve.

Step 9



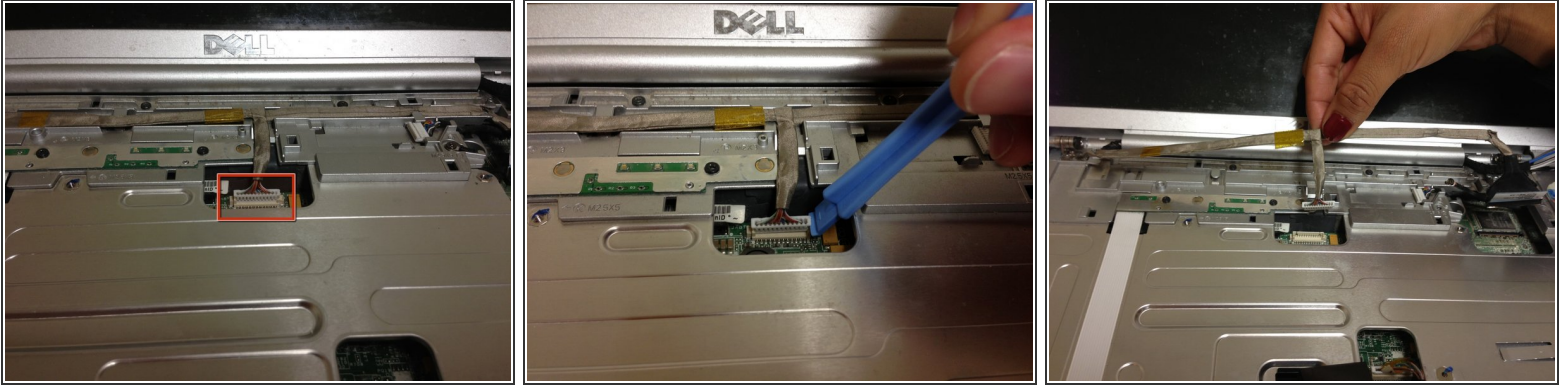
- Pull the wires that you disconnected in the previous step through the hole in the top of the laptop.


Step 10



- Detach the Phillips #1 grounding screw with a Phillips #1 screwdriver.
- Disconnect the display cable by pulling up on the rectangular tab with your fingers.

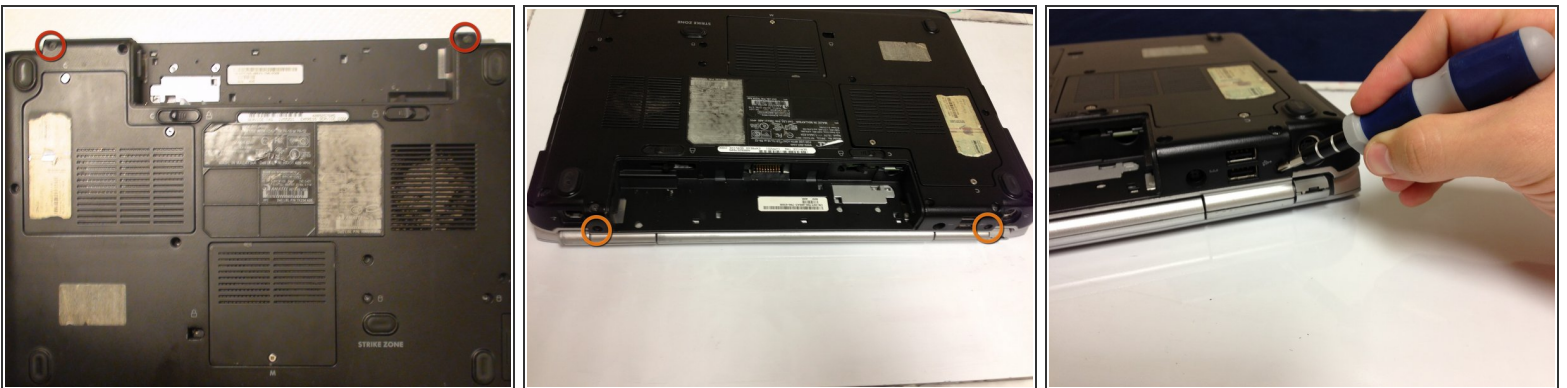
Step 11



 When disconnecting the camera/microphone cable, pull up by the white plug. Pulling on the cable itself can damage it.

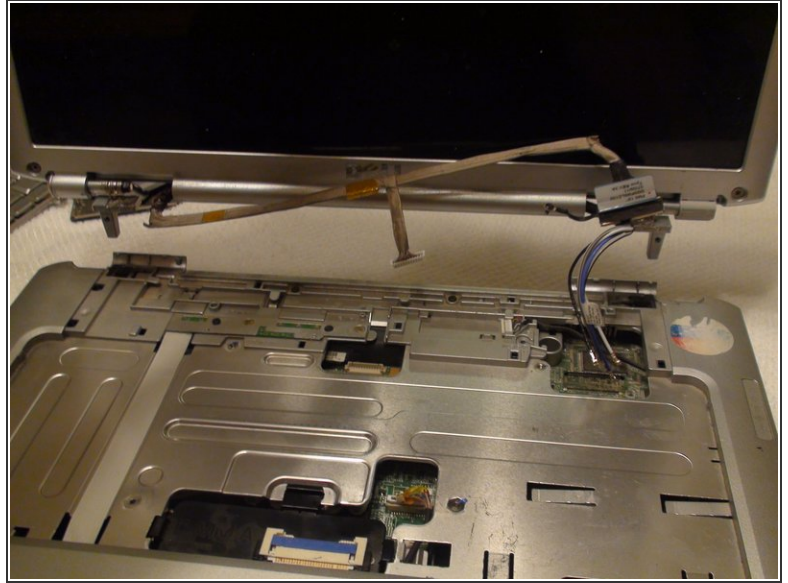
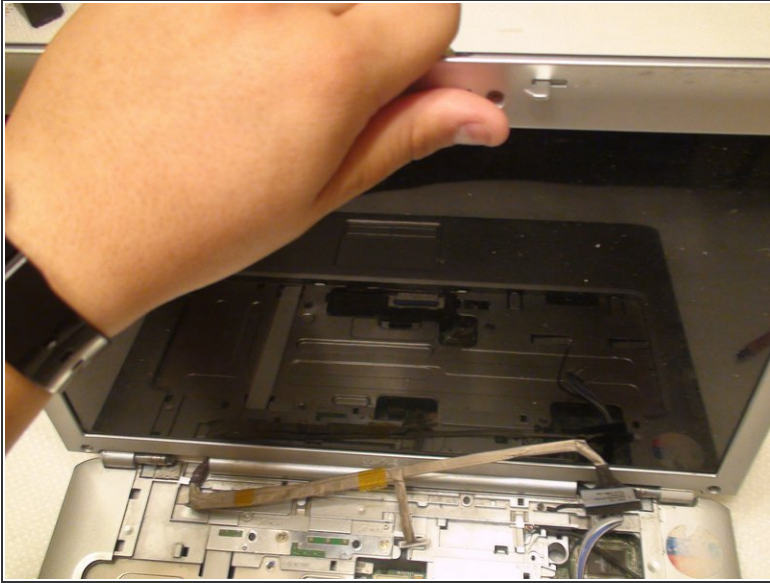
- Disconnect the camera/microphone cable by prying it upward with the plastic opener tool.
- Separate the camera/microphone cable from the case by pulling it up with your fingers.


Step 12



- Remove the two 10 mm Phillips #1 screws from the bottom of the laptop that attach the lid assembly to the laptop with a Phillips #1 screwdriver.
- Remove the two 10 mm Phillips #1 screws from the back of the laptop that also attach the lid assembly to the laptop with a Phillips #1 screwdriver.

Step 13



 There is a risk of dropping the lid or base of the laptop, or damaging cables. Make sure no cables are still attached.

- Remove the lid by pulling it up from the base of the laptop with both hands.

To reassemble your device, follow these instructions in reverse order.