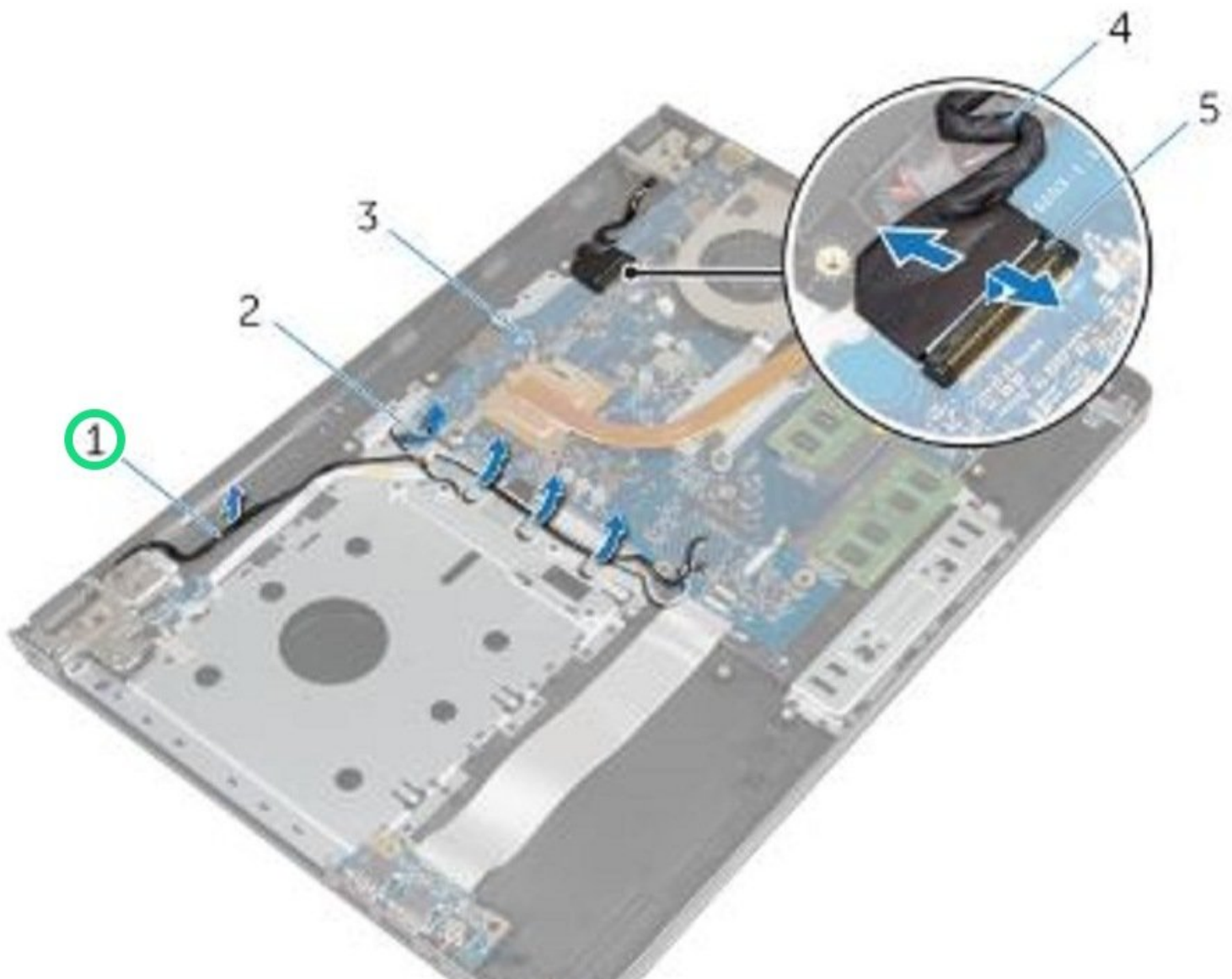




# Dell Inspiron 15-5558 Display Assembly Replacement

How to remove a broken display assembly on the Dell Inspiron 15-5558.

Written By: Terrence15



---

# INTRODUCTION

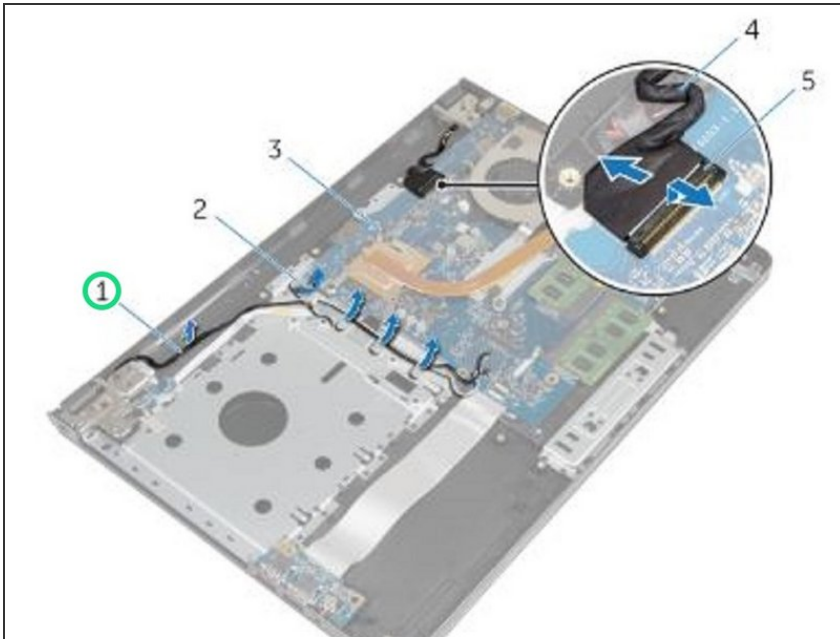
In this guide, we will be showing you how to remove and replace the Display Assembly.

---

## TOOLS:

- [Essential Electronics Toolkit](#) (1)
-

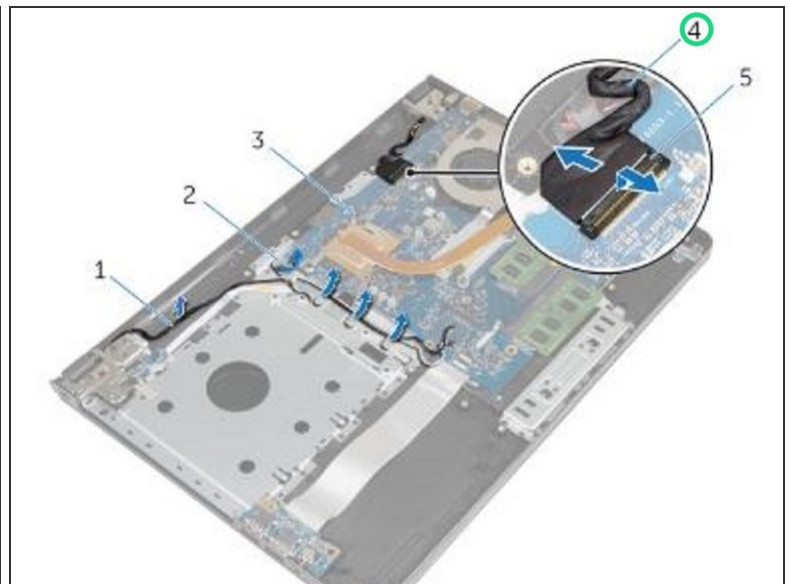
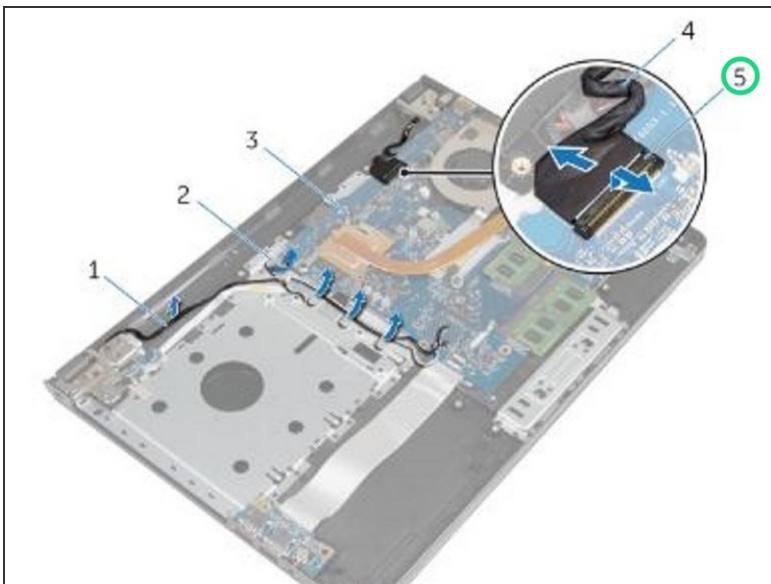
## Step 1 — Note the Antenna Cable



**⚠ WARNING:** Before working inside your computer, read the safety information that shipped with your computer and follow the steps in [Before Working Inside Your Computer](#). After working inside your computer, follow the instructions in [After Working Inside Your Computer](#).

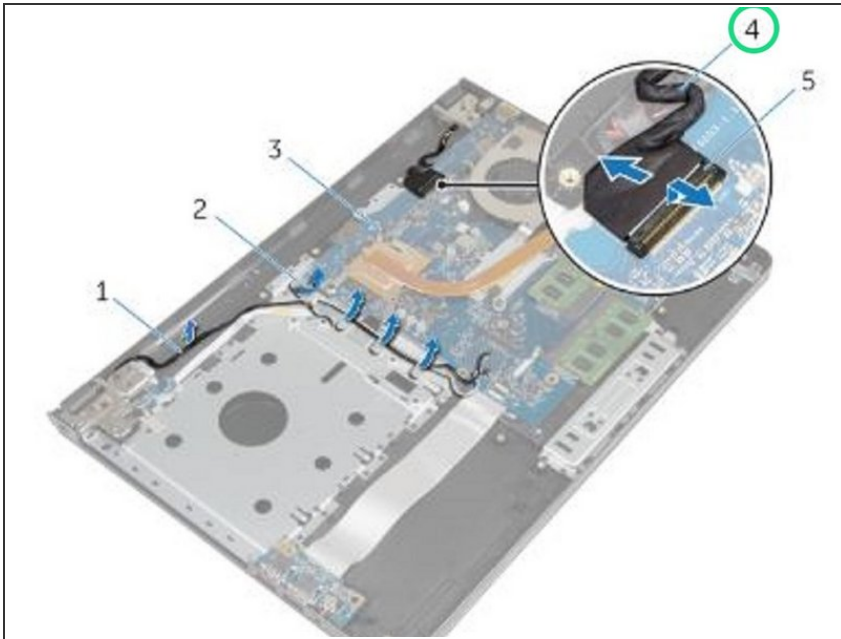
- Note the antenna cable routing and remove the cable from its routing guides.

## Step 2 — Disconnecting the Display Cable



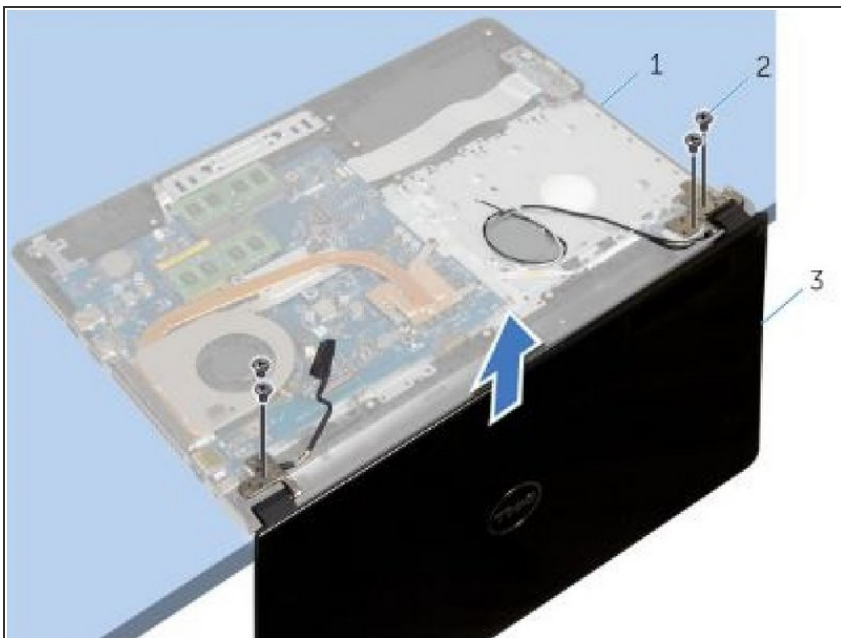
- Lift the latch and disconnect the display cable from the system board.

### Step 3 — Note the Display Cable



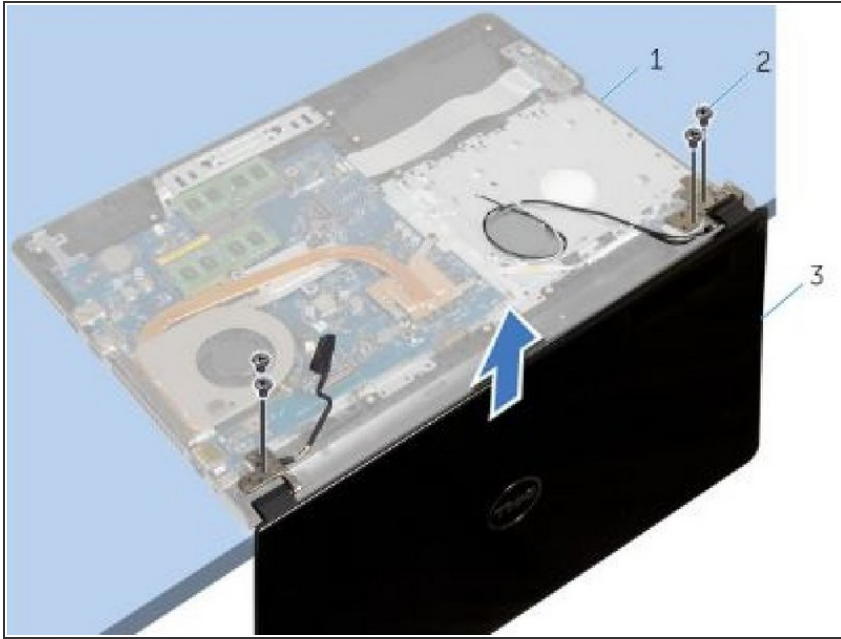
- Note the display cable routing and remove the cable from its routing guides.

### Step 4 — Turn the Computer Over



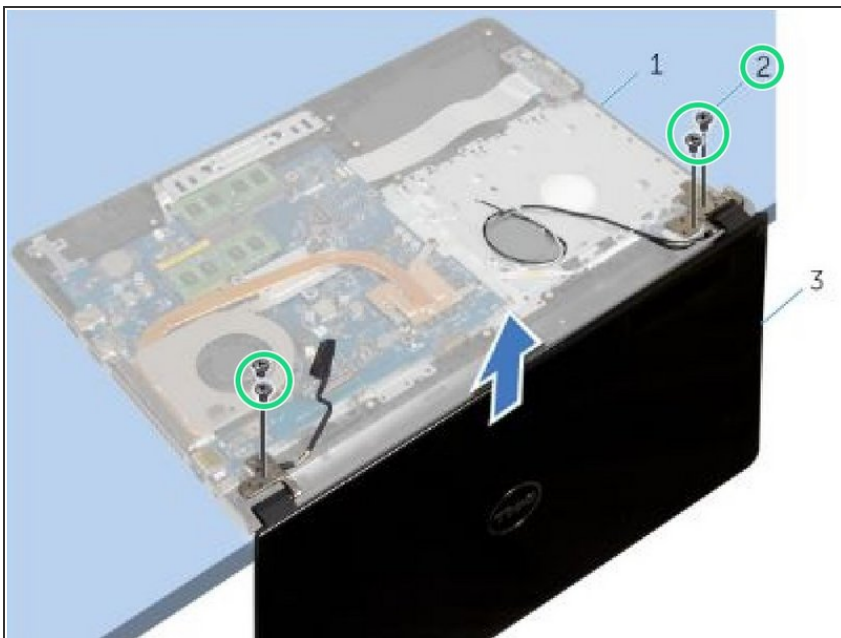
- Turn the computer over.
- Open the display at an angle of 90 degrees.

## Step 5 — Placing the Computer



- Place the computer on the edge of the table so that the palm-rest assembly is on the table and the display assembly extends past the table edge with the display hinges facing up.

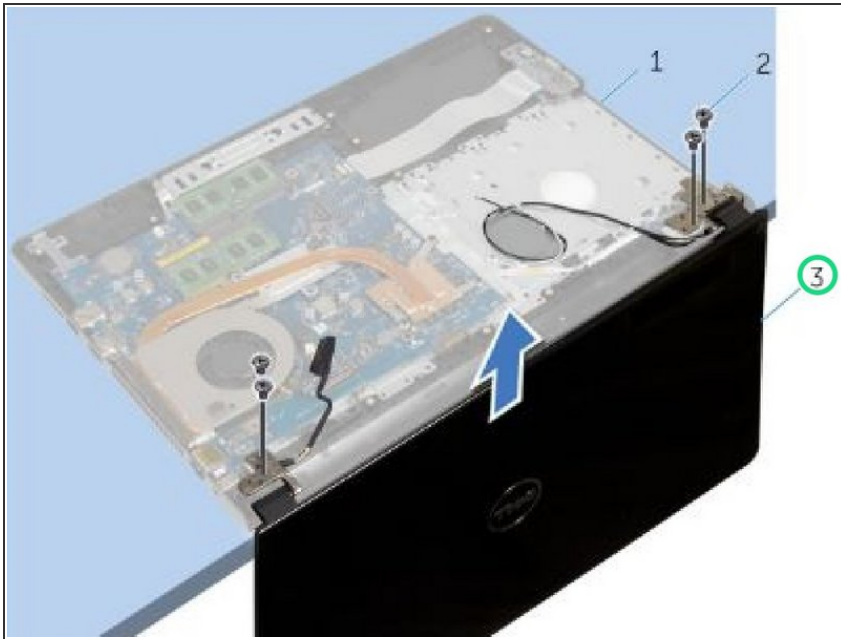
## Step 6 — Remove the Screws



- Remove the screws that secure the display hinges to the palm-rest assembly.

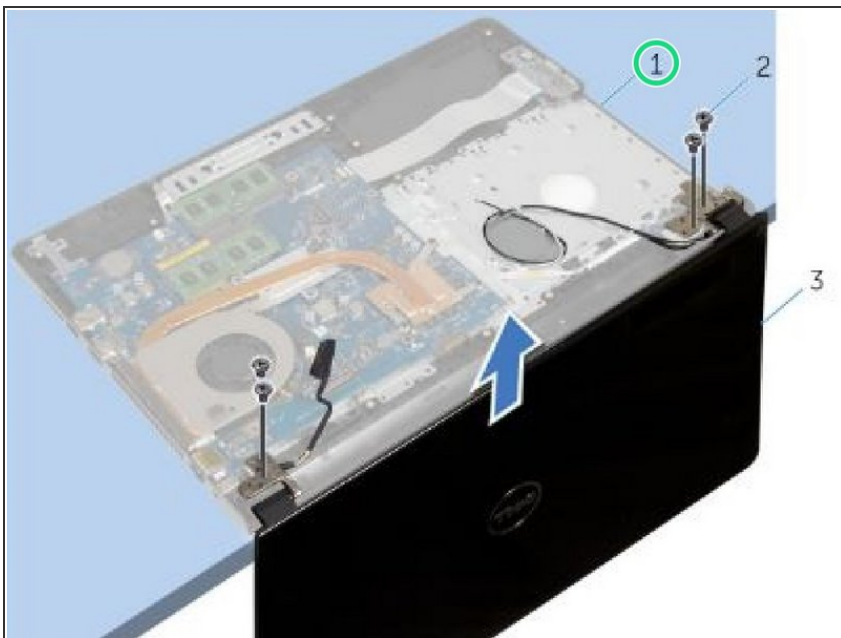


## Step 7 — Lifting the Display Assembly



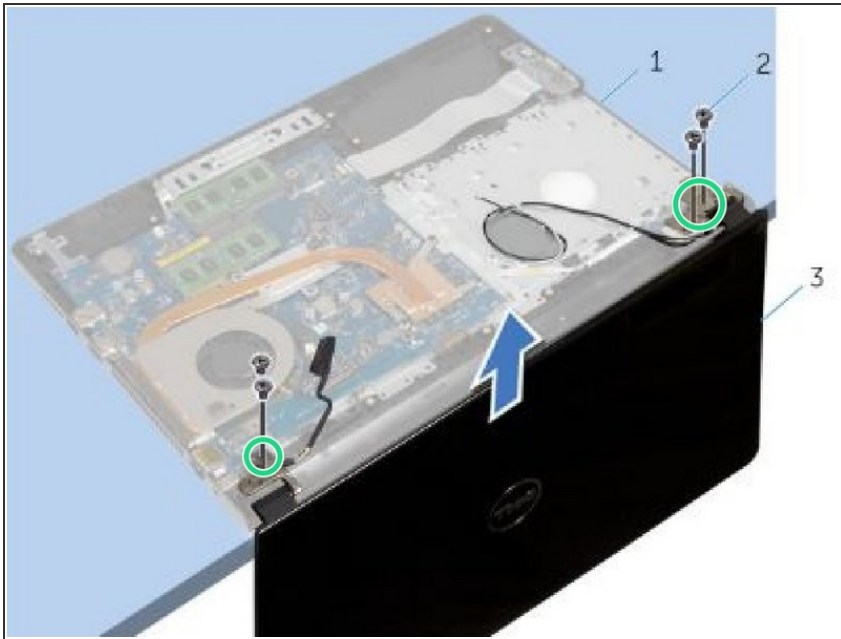
- Lift the display assembly off the palm-rest assembly.

## Step 8 — Placing the Palm Rest Assembly



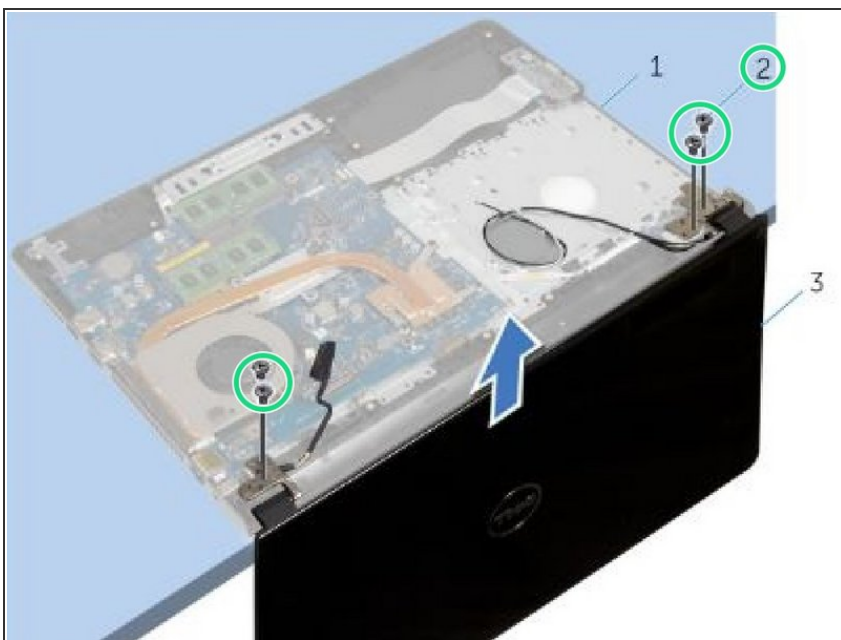
- Place the palm-rest assembly at the edge of the table with the coin-cell battery facing away from the edge.

## Step 9 — Align the Screw Holes



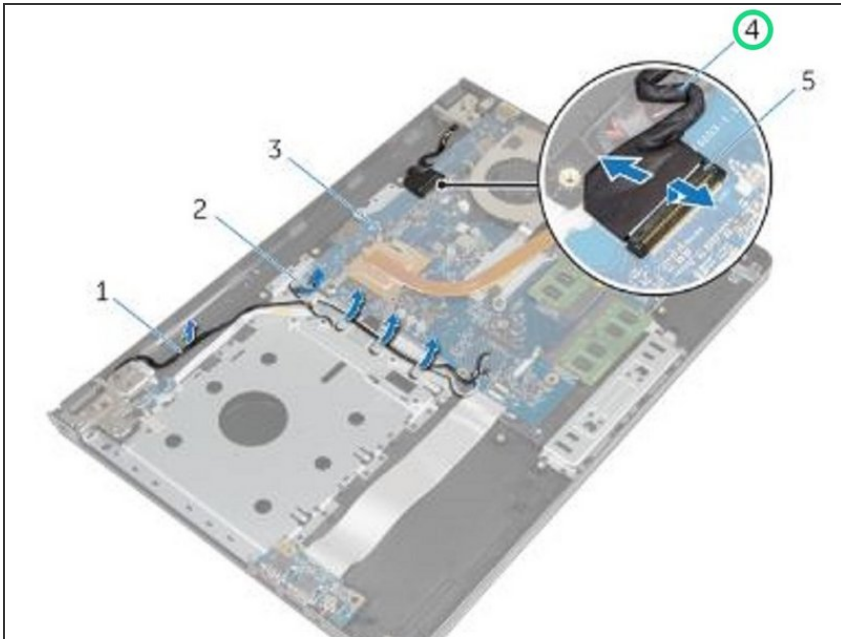
- Align the screw holes on the display hinges with the screw holes on the palm-rest assembly.

## Step 10 — Replace the Screws



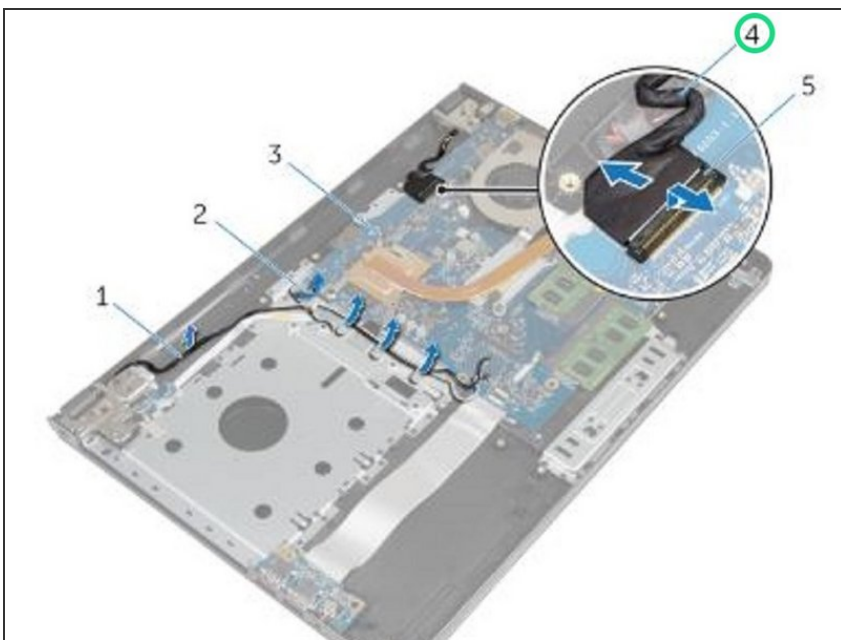
- Replace the screws that secure the display hinges to the palm-rest assembly.

## Step 11 — Route the Display Cable



- Close the display and turn the computer over.
- Route the display cable through the routing guides on the palm-rest assembly.

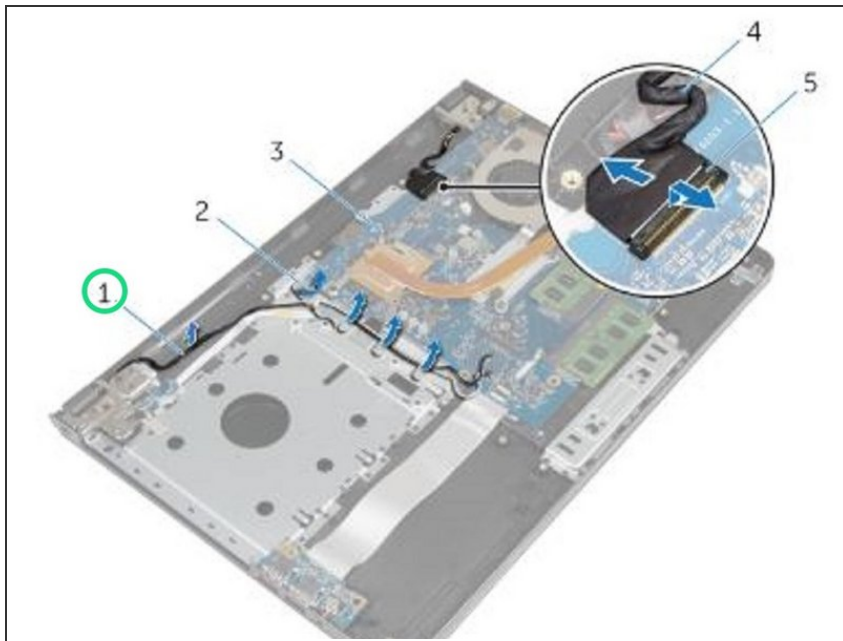
## Step 12 — Slide the Display Cable



- Slide the display cable to the connector and press down on the latch to connect the display cable to the system board.



## Step 13 — Routing the Antenna Cable



- Route the antenna cable through the routing guides on the palm-rest assembly.