



# Dell Inspiron 1520 Display Assembly Replacement

Written By: Terrence15

## INTRODUCTION

In this guide, we will be showing you how to remove and replace the Display Assembly.




### TOOLS:

- [Phillips #0 Screwdriver](#) (1)

## Step 1 — Close the Display



 Follow the instructions in [Before You Begin](#).

- Close the display and turn the computer over.

## Step 2 — Loosen the Screws



- Loosen the two captive screws that secure the Mini Card compartment cover, then remove the cover and set it aside.

### Step 3 — Remove the Screws



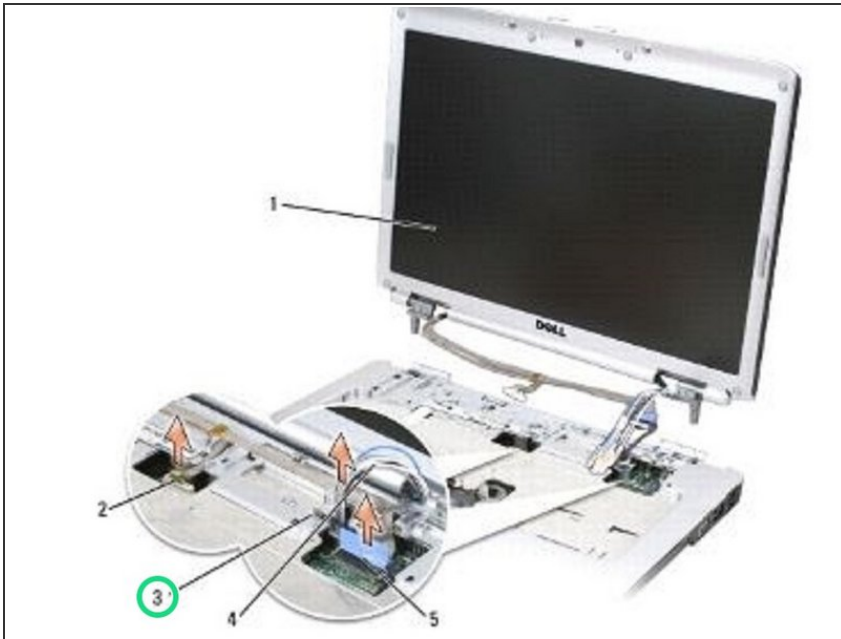
- Remove the two M2.5 x 8-mm screws from the bottom of the computer.

### Step 4 — Remove the Screws



- Remove the two M2.5 x 8-mm screws from the back of the computer.

## Step 5 — Disconnect the Display Cable



- Loosen the captive grounding screw, then disconnect the display cable from the display cable connector on the system board.

## Step 6 — Disconnect the Connector



- Disconnect the camera/microphone cable from the camera/microphone cable connector on the system board.

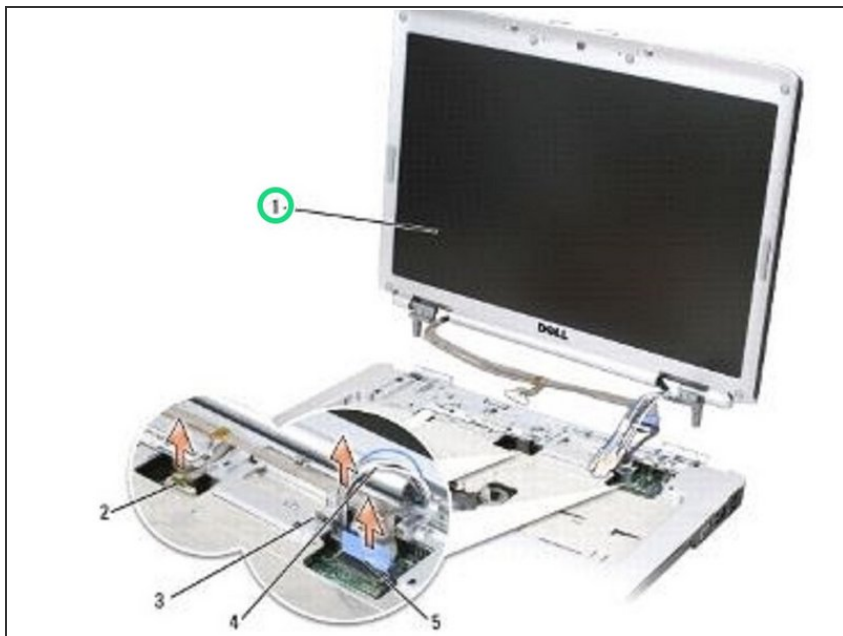
## Step 7 — Lifting the Display Cable



- Lift the display cable and antenna cables from beneath the tabs on the palm rest.

**(i) NOTICE:** Ensure that the display cable and the antenna cables do not get caught beneath the plastic tabs on the palm rest.

## Step 8 — Lifting the Display Assembly



- Lift the display assembly out of the computer.

## Step 9 — Align the Display Hinges



- Align the display hinges with the holes in the base of the computer, then lower the display into place.

## Step 10 — Sliding the Antenna Cables



- Slide the antenna cables through the hole in the palm rest and the base of the computer.
- ☑ **NOTICE:** Ensure that the display cable and antenna cables are properly routed and secured beneath the plastic tabs on the palm rest.

## Step 11 — Routing the Display Cable



- Route the display cable and antenna cables beneath the plastic tabs on the palm rest.

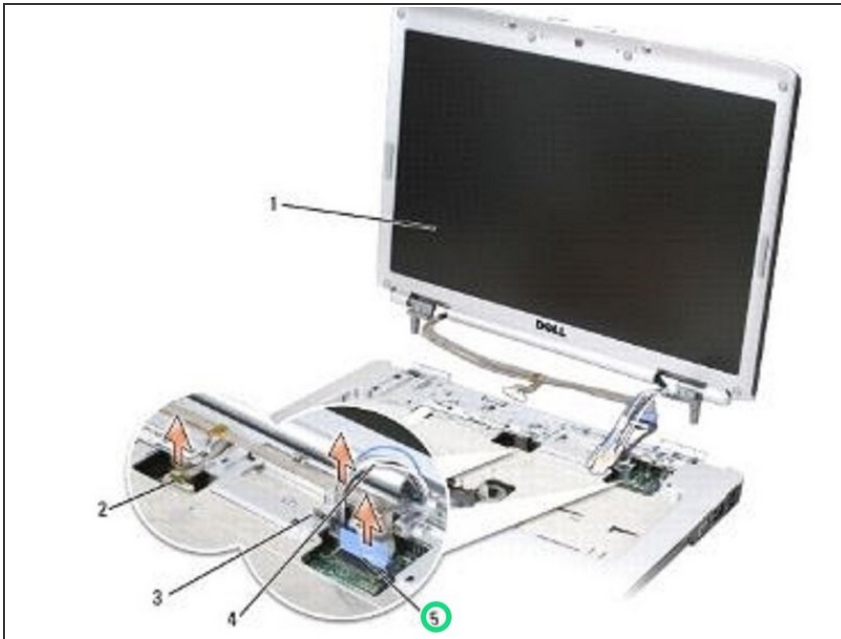
## Step 12 — Connecting the Cables



- Connect the camera/microphone cable to the camera/microphone cable connector on the system board.



## Step 13 — Connect the Display Cable



- Connect the display cable to the display cable connector on the system board.

## Step 14 — Replace the Screw



- Replace and tighten the captive grounding screw.

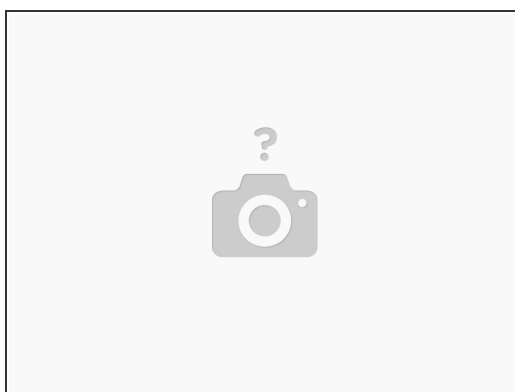


## Step 15 — Replace the Screws



- Replace the two M2.5 x 8-mm screws on the back of the computer.

## Step 16 — Close the Display



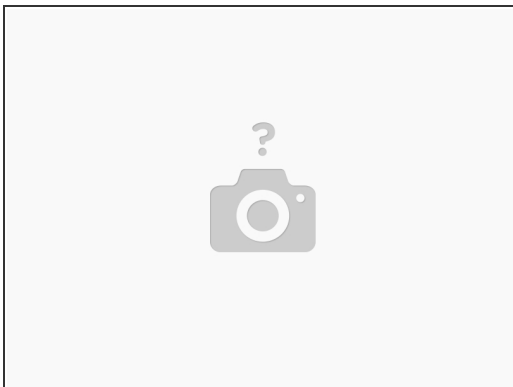
- Close the display and turn the computer over.

## Step 17 — Replace the Screws



- Replace the two M2.5 x 8-mm screws on the bottom of the computer.

## Step 18 — Replace the Compartment Cover



- Replace the Mini Card compartment cover and tighten the screws.