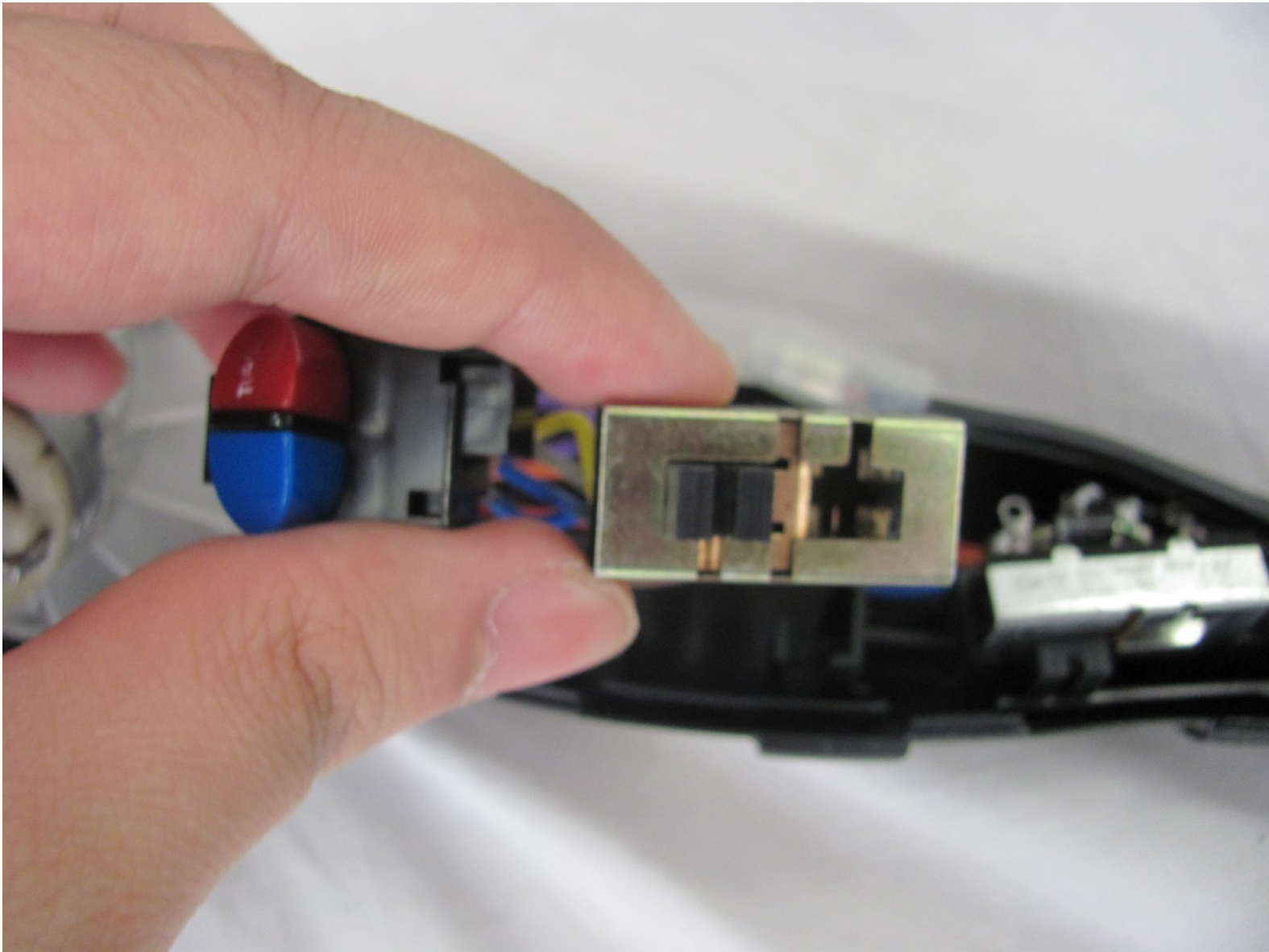




# Revlon 473 Hair Dryer Switch Replacement

This guide will show you how to test and...

Written By: Jessica Leyva



## INTRODUCTION

This guide will show you how to test and replace a faulty switch on a Revlon 473 Hair Dryer.

A faulty switch not only limits operation, but it is also a fire hazard. If the power switch on your Revlon 473 Hair Dryer isn't functioning, a switch replacement can improve the operation and safety of the unit.

Disconnect the Revlon 473 from any power source before you begin this repair.



### TOOLS:

- [Digital Multimeter](#) (1)
  - [Phillips #2 Screwdriver](#) (1)
-

## Step 1 — Shell



⚠ Before disassembly, make sure that the device is unplugged.

- Remove the two 17.83 mm black screws located on the handle.

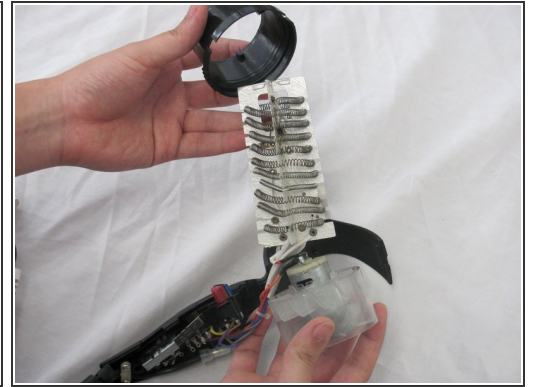
## Step 2



- Separate the shell from the main component.
- Check to ensure each piece is free from debris.



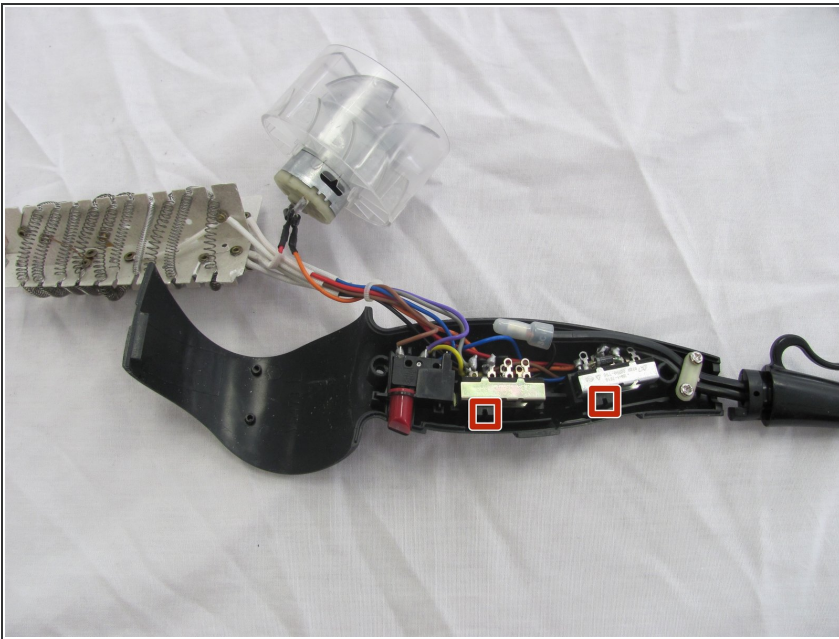
## Step 3



- Remove the casing from the heating element.

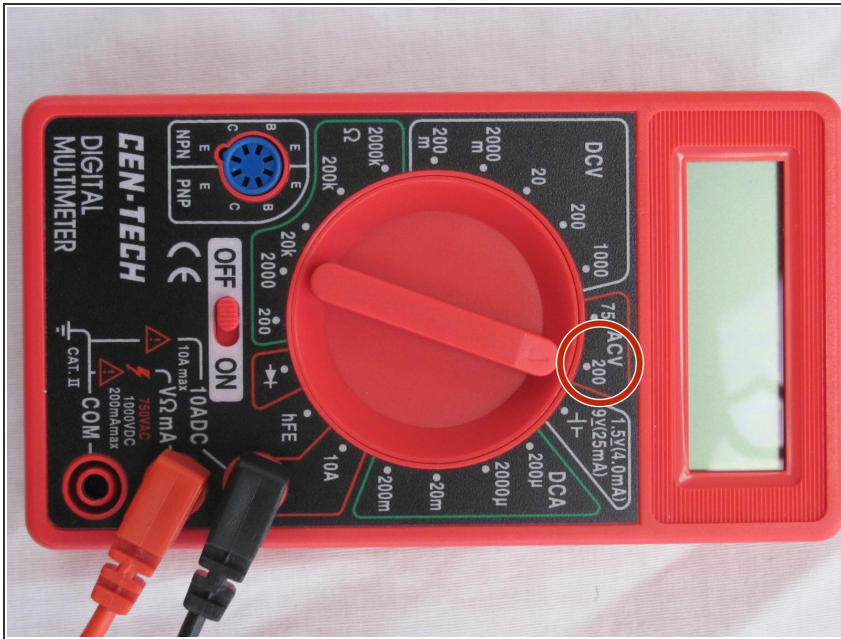
**i** For reassembly, reattach the silver casing before the black cover.

## Step 4 — Switch



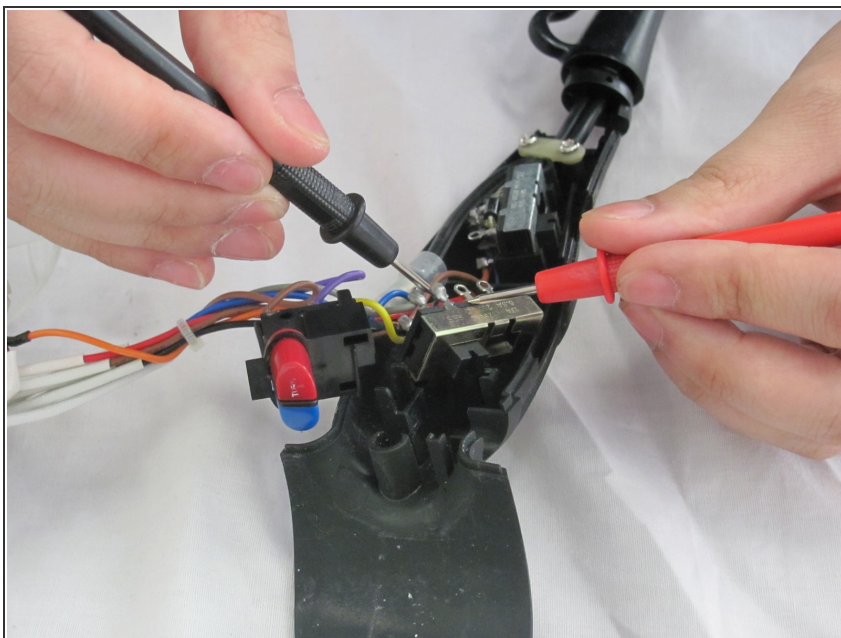
- Locate the two switches in the handle of the device.

## Step 5



- Set the multimeter to 200 ACV.

## Step 6



- Bring the probes toward each switch to test for continuity.
  - If the numbers on the multimeter continue to change, the circuit is closed and the switches are functioning.
  - If the meter stays at a set number, the circuit is open, and the switch needs to be replaced.
- i** To replace a faulty switch, cut the wires and solder the wires back on to the new switch.

To reassemble your device, follow these instructions in reverse order.