



Samsung Epic 4G Power Button Replacement

Installing a new power button into your Samsung Epic 4G requires little experience and minimal phone disassembly.

Written By: Andrew Cunningham



INTRODUCTION

This guide details how to install a new power button into your Samsung Epic 4G. Directions are provided for both disassembly and reassembly.



TOOLS:

- [Phillips #000 Screwdriver](#) (1)
 - [Spudger](#) (1)
-

Step 1 — Phone Case



- Slide your fingernail along the edge of the device and pull at the plastic backing.
- ⓘ While pulling the plastic backing apart from the device, you will hear a snap sound which signals that the backing has detached.

Step 2



- Pull at the plastic backing gently to remove it after hearing the snap sound.

Step 3 — Battery



- Remove the battery from the device by pulling the battery edge upwards.

Step 4 — Removing the Memory Card:



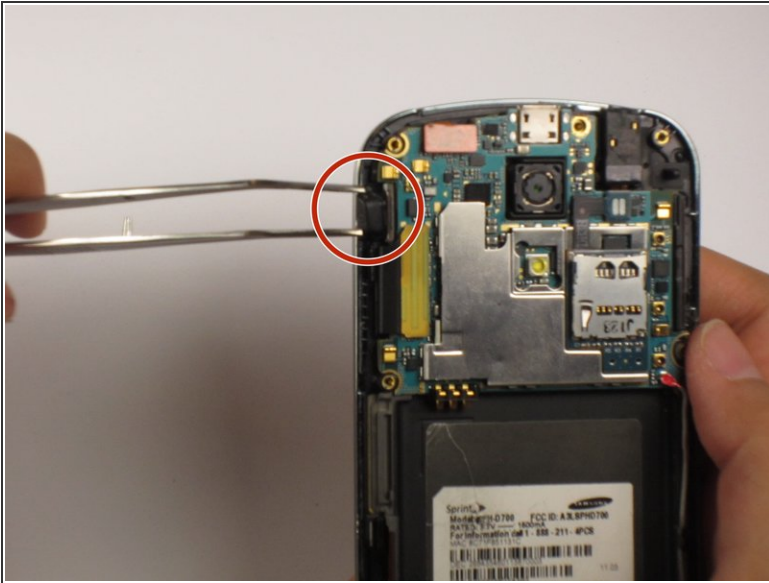
- Locate the memory card on the upper right-hand corner of the device.
- Remove the memory card from the device by gently sliding it out of its holder with your fingers.

Step 5 — Removing the Back Housing



- Remove the seven screws from the back of the phone using the Phillips #000 screwdriver.
- Separate the backing from the silver trim around the phone by using a nylon spudger to pry between the two components.
- ⓘ While separating the two components, most of the buttons (including the power button) will fall out.

Step 6 — Removing the Power Button



- Remove the power button using tweezers if it did not fall out in the previous step.
- ⓘ At this point, you can replace the power button with a new one from a manufacturer.

To reassemble your device, follow these instructions in reverse order.