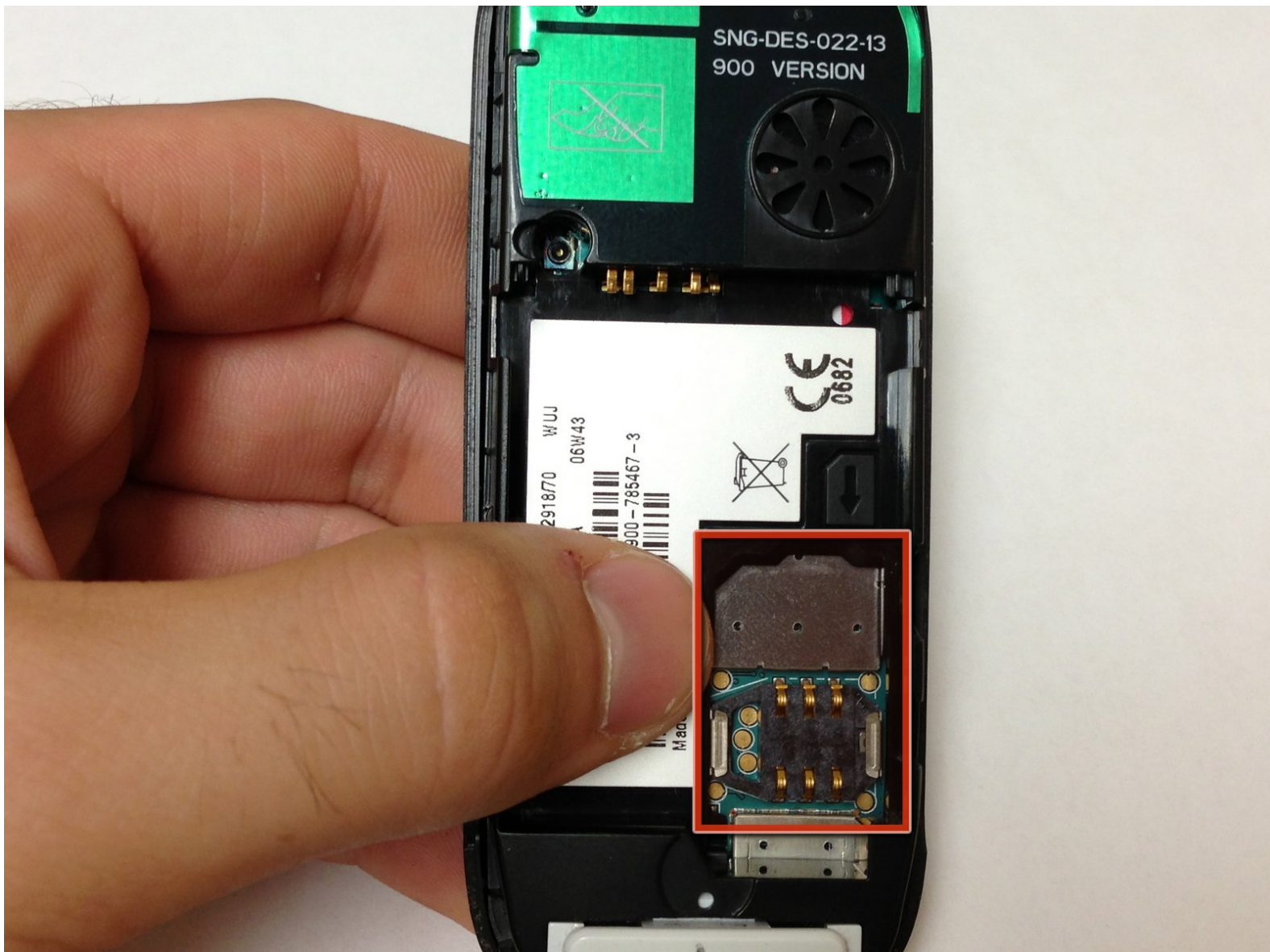




Sony Ericsson J220i SIM Card Replacement

Finding and removing/replacing the SIM card.

Written By: James Au




INTRODUCTION

This guide will show the user how to disassemble a Sony Ericsson J22Oi with the intent of removing and replacing the SIM card.

Step 1 — Battery



 Before disassembling the phone, make sure the phone is powered off.

Step 2



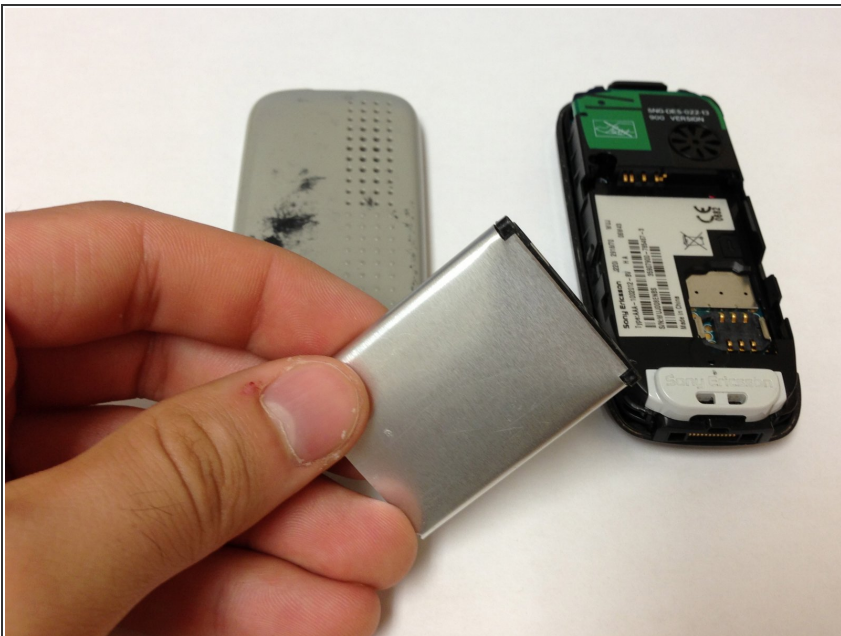
- Flip to the back of the phone and locate the black button on the top of the phone.

Step 3



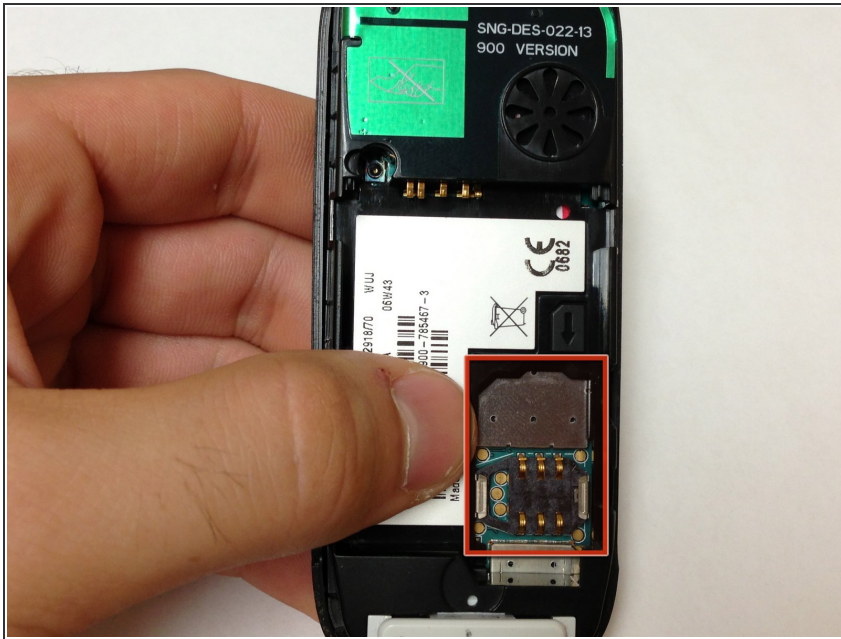
- Firmly hold down the black button on the top of the phone and gently snap off the back cover.

Step 4



- Remove the battery by wedging it out from the back.

Step 5 — SIM Card



- With the battery removed, locate the SIM card slot on the lower right side of the back of the phone. Gently slide the SIM card out from the slot.

To reassemble your device, follow these instructions in reverse order.