



# Pioneer SE-C8BT Truly Wireless Bluetooth Headphones

Pioneer SE-CL8BT Truly Wireless Bluetooth Headphones Teardown.

Written By: Erik MV



---

## INTRODUCTION

Oh the smell of brand new headphones, and the exciting of discover what's inside of this buddies.

Say no more, let's find out...



### TOOLS:

- [Multimeter](#) (1)
  - [Utility Knife](#) (1)
  - [Polyurethane Glue](#) (1)
  - [Soldering Iron](#) (1)
  - [Solder](#) (1)
  - [Isopropyl Alcohol 70%](#) (1)
-

## Step 1 — Unboxing



- Well we expected some confetti and balloons at time to opening this box but isn't that much.
- In the box: A Micro USB Cable, Two pairs of gummies, Portable Case and Battery Charger and obviously two pair of bluetooth Headphones :)

## Step 2 — Taking some rubbers apart



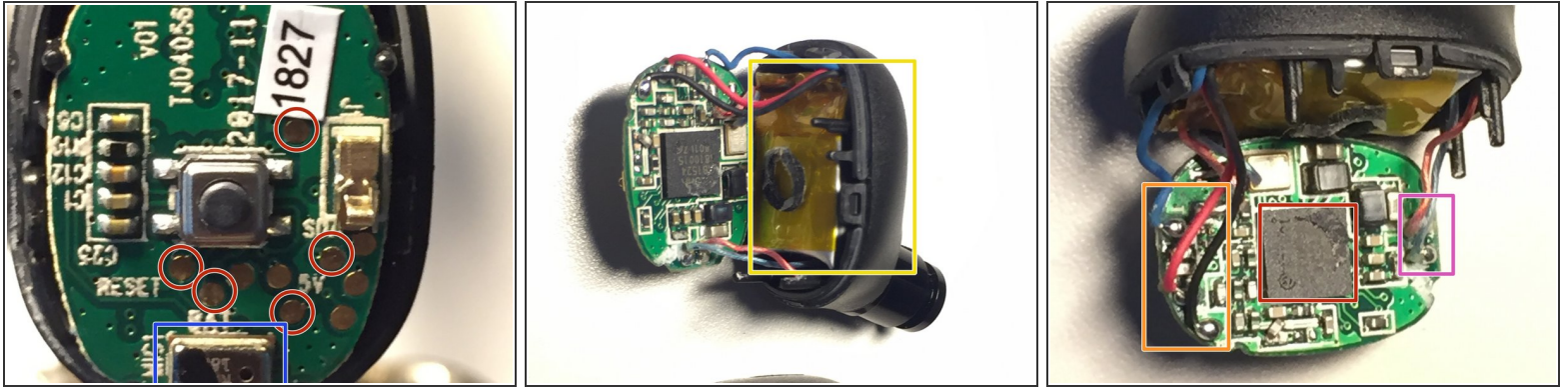
- First remove the gummy parts like the "dust" cover.
- Now time to work in this one (you can choose L or R Headphone) they're the same in the outside at least :)

### Step 3 — Taking apart



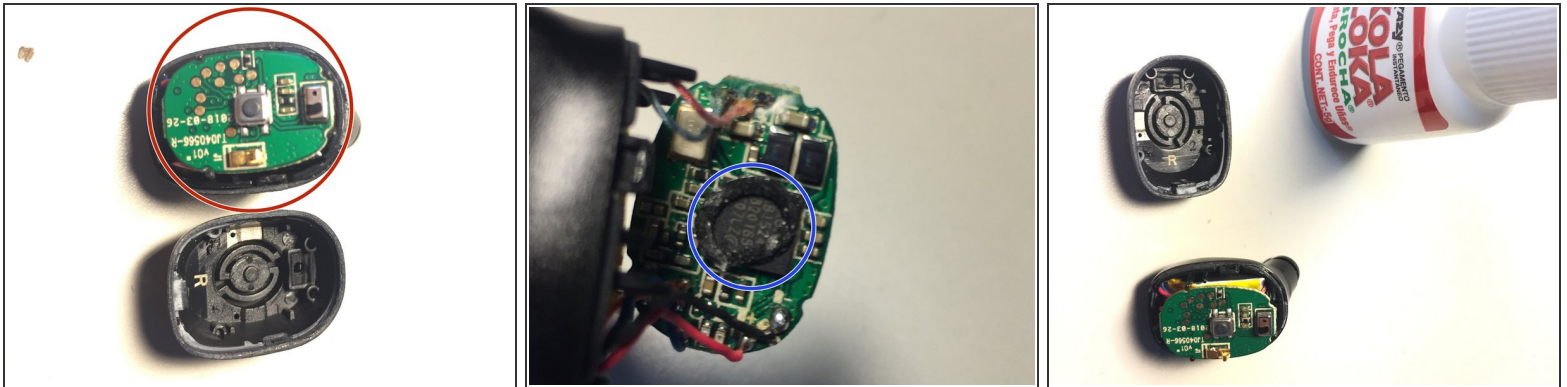
- Using a Xacto or a Cutter horizontally press a little bit the the union of both plastics (Glued together).
- Please be pathient cause it depends if your headphones conserves the "anti dust and waterproof" protection.

## Step 4 — Let' see what we got



- As you can see this is the 1.0 Version, how cute.
- There are some test points to find out what's the problem: BATT (For to check the Battery voltage is present and how much is it), 5V USB Power Supply, SDA & SCL Communication Points, and a RESET Point (Maybe with a Pull Up push button resistor circuit).
- An Electrolytic Microphone (Note: this one is into each bluetooth buddy).
- The brain is open: Airoha AB1524 Truly Wireless Bluetooth IC.
- Battery Cables Positive, Negative, and Sense.
- LP & LN Speaker Connection (those speakers are inside the tube) very small... and unpowered.
- A very Small 55mAh LiPo Battery.

## Step 5 — Let's see what we got 2



- Now it's time to the Right Channel Buddie, same process, and a little bit different PCB Main.
- On the Top: An Electrolytic Microphone, Antenna Connection (is located on the borders glued and part of the case), an push button and test points with no info.
- Upside down: Airoha AB1524 IC, Leds, Battery cables, RP & RN Speaker Connections and some passive electronic components.
- Kola Loka (If you know you know)...

## Step 6 — Back in time



- Apply a little bit of amount of Kola Loka (using the point of a needle) on the circumference of the earphone and glue them. apply force while it dry.

