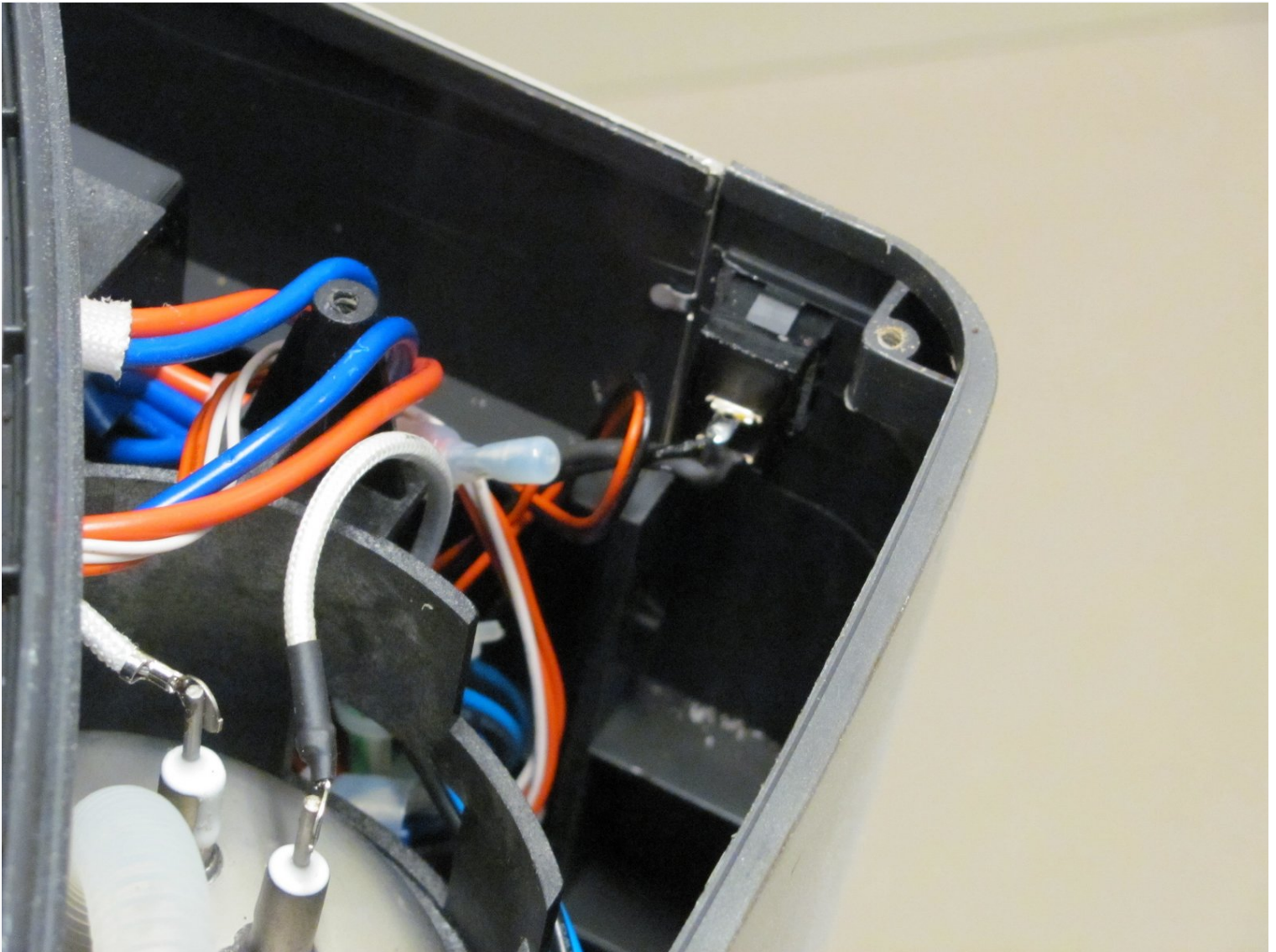




Breville BKC600XL On/Off Switch Replacement

Replacing the On/Off switch should the wiring...

Written By: Antonio



INTRODUCTION

Replacing the On/Off switch should the wiring become faulty.

TOOLS:

Electrical Tape in 6 Assorted Colors (1)

Phillips #0 Screwdriver (1)

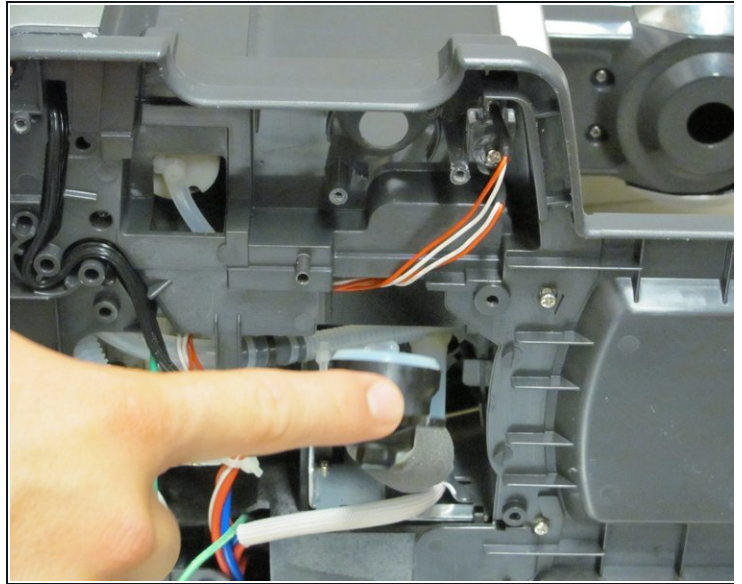
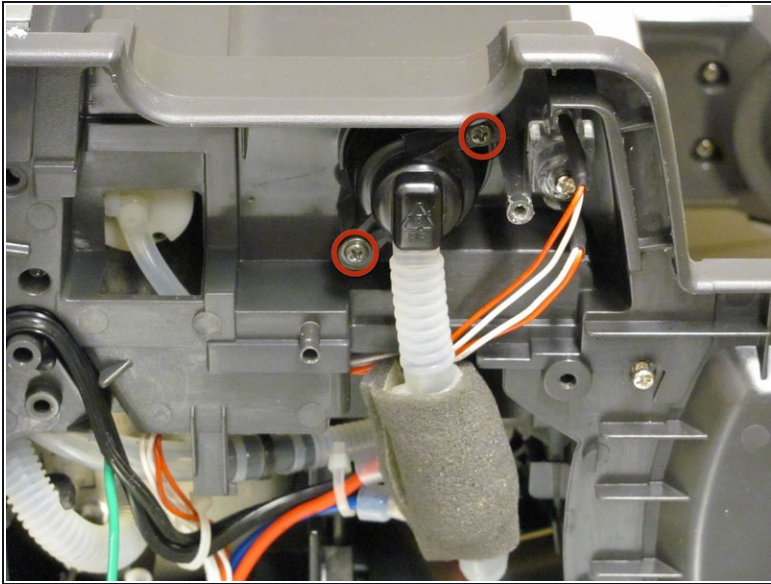
Step 1 — Bottom Cover #1



- Use a Phillips #0 screwdriver to remove the following ten screws:
 - Four 18mm Phillips screws.
 - Four 9.75mm Phillips screws.
 - Two 8mm Phillips screws.

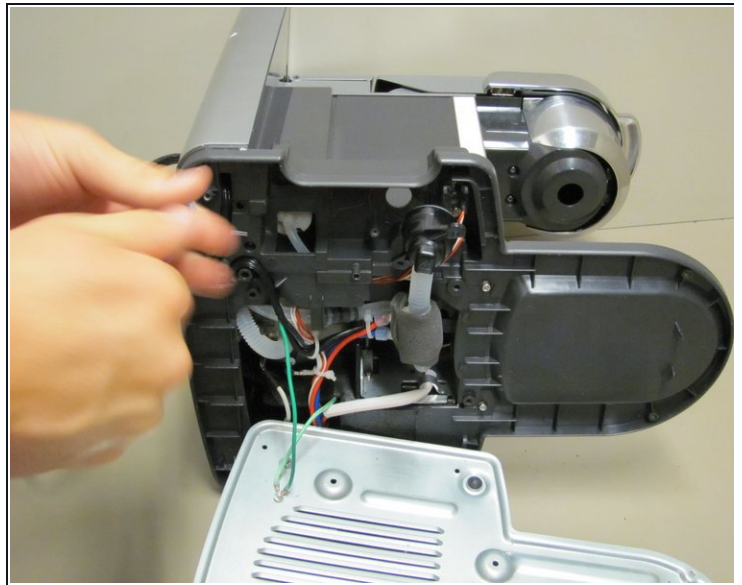
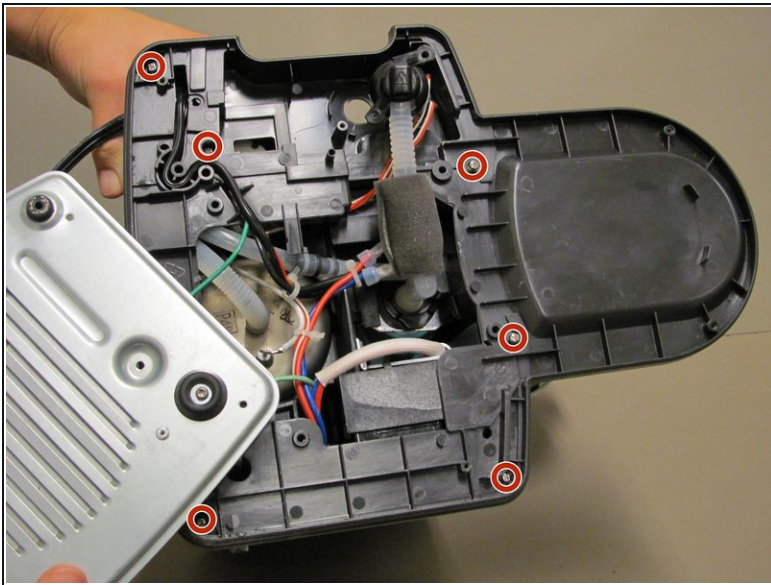
 The cover will not remove entirely. Keep *green* ground wire attached to the cover.

Step 2 — Black Water Inlet



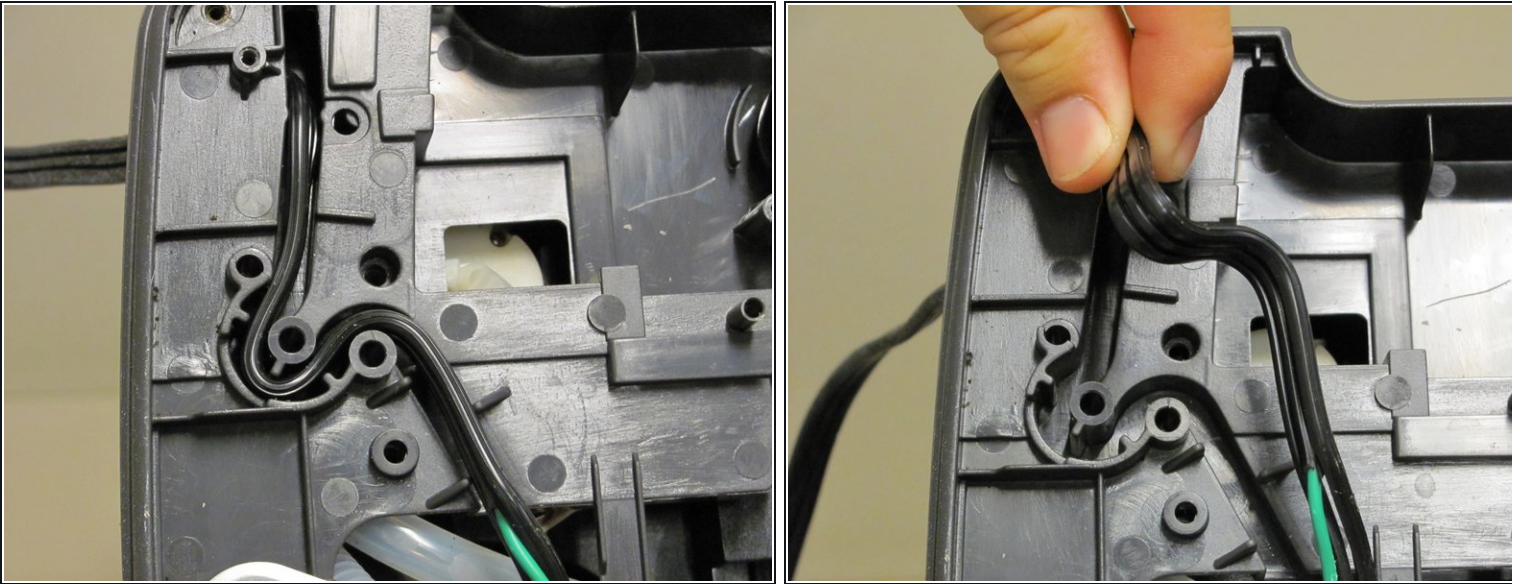
- Remove the two 14.5 Phillips screws.
- ⓘ Ensure that only the water inlet valve can be moved.

Step 3 — Bottom Cover #2



- Use a Phillips #0 screwdriver to remove the following six screws:
 - Six 14.5mm Phillips screws.

Step 4 — Power Cord

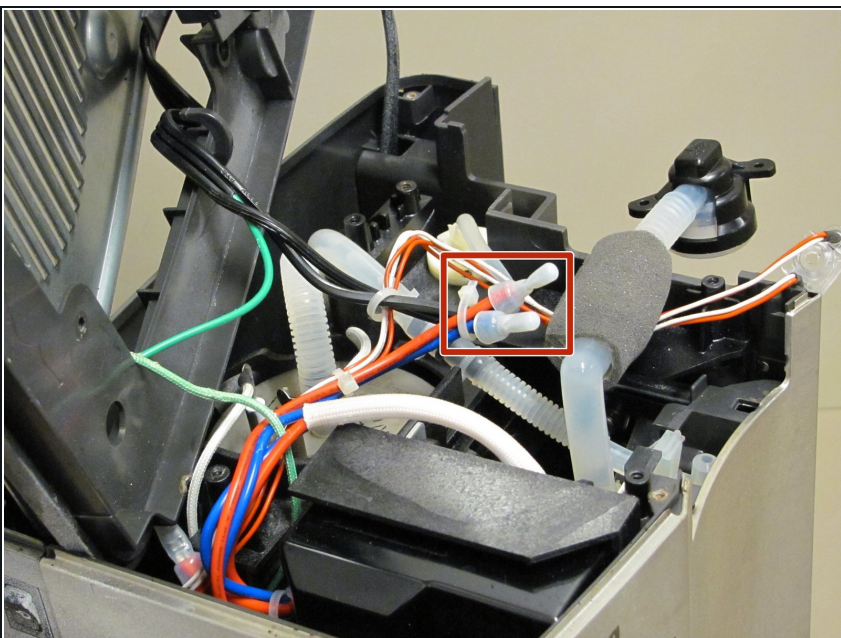


- Remove the power cord from the groove. (the black cord that leads into the green wire.)

❗ This creates more slack in the wire to give you more room to work with.

⚠ DO NOT remove green wire from the cover its attached to.

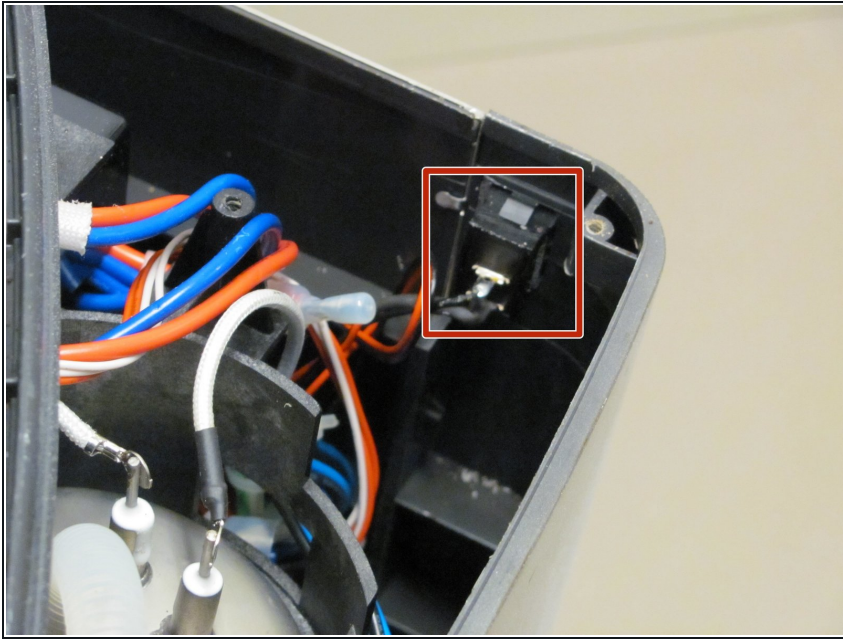
Step 5 — On/Off Switch



- Carefully pull both the red and blue wires that covered at the tip.

⚠ Do not yank them out from the other end. Move them aside and out of the way.

Step 6



- Carefully remove the On/Off Switch from its slot on the outside cover.
- ★ The wires for the switch need to be tied back into the wires that lead to the battery. If needed, use electrical tape.

To reassemble your device, follow these instructions in reverse order.