



Lenovo N20p Chromebook I/O Board Replacement

Are you having issues connecting devices to your USB port of the Lenovo N20p Chromebook? Are there errors or malfunctions when you plug in your memory card?

Written By: Shihao Cao



INTRODUCTION

here is a guide to help you locate the I/O Board for inspection, repairs, or replacement. The tools you will need are the Phillips #0 Screwdriver, Metal Spudger, and the Spudger.

TOOLS:

- [Spudger](#) (1)
 - [Phillips #0 Screwdriver](#) (1)
 - [Metal Spudger](#) (1)
-

Step 1 — Keyboard



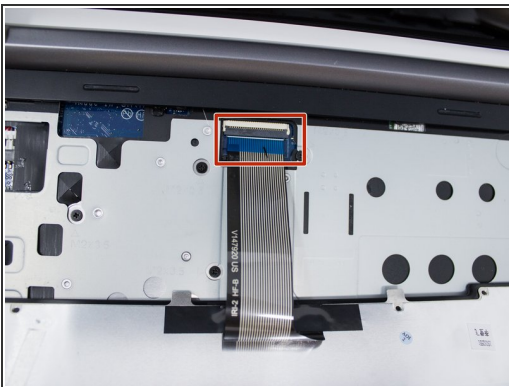
- ⚠ Power down the Chromebook before starting any repair.
- Remove the two 3.5 mm Phillips #0 screws using a screwdriver.
- ℹ It is only necessary to remove these two screws to complete this step.

Step 2



- Use the hook of the metal spudger to carefully lift up the keyboard.
- ⚠ Lift the keyboard carefully. If you lift too quickly, it might break the two cables that connect the keyboard to the motherboard.

Step 3



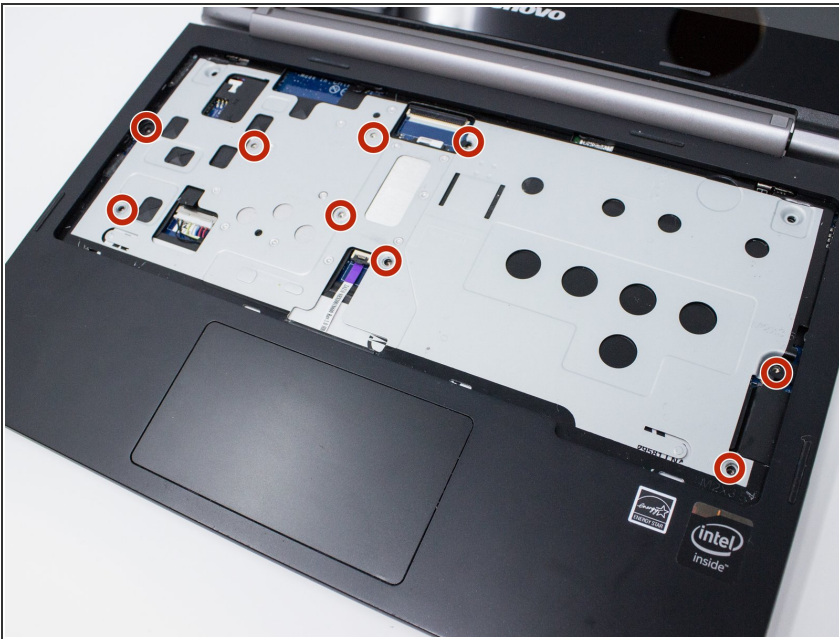
- Carefully, disconnect the keyboard cable from the motherboard carefully by pulling on the blue tab of the cable.
- You will now be able to replace the keyboard.

Step 4 — Battery



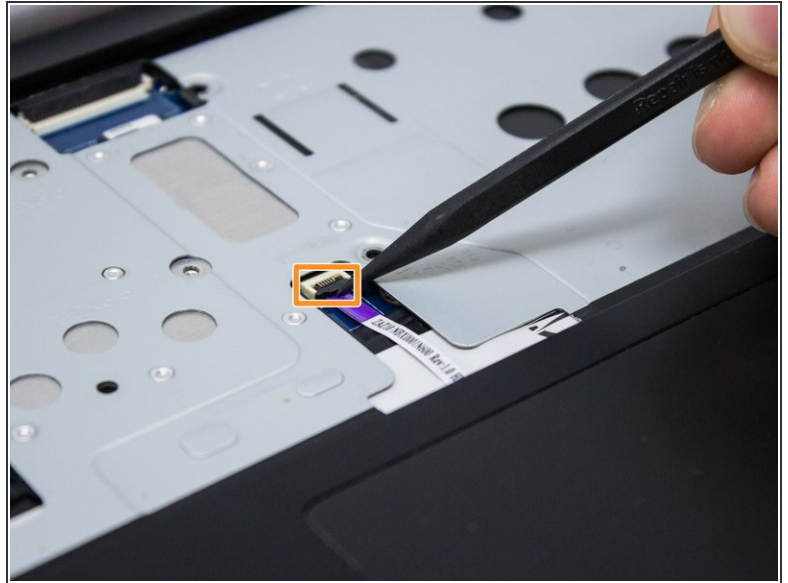
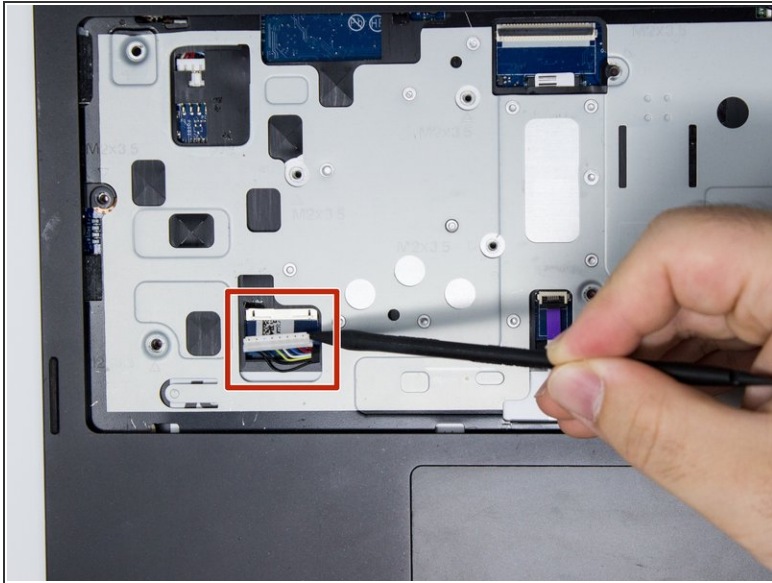
- Remove the two rubber feet of the back of the Chromebook using a metal spudger.
- Remove six bottom 3.5 mm Phillips #0 screws and two top 5 mm Phillips #1 screws.

Step 5



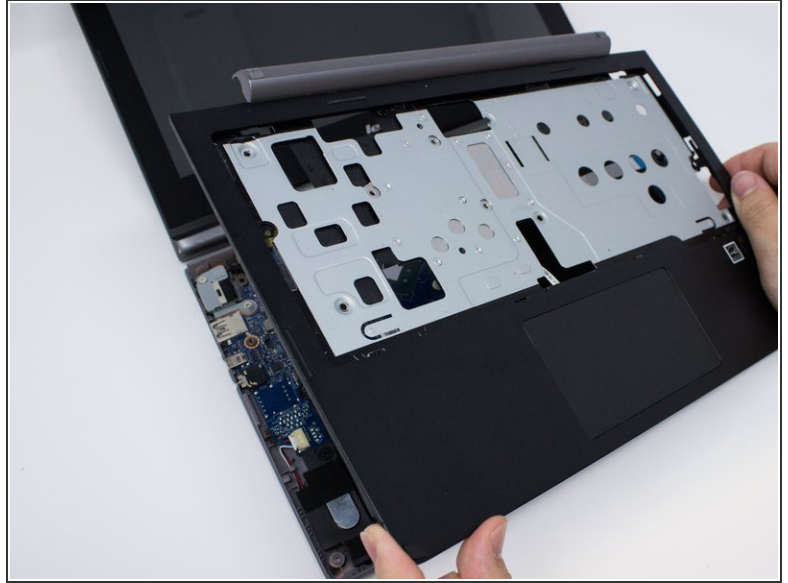
- Remove all nine 3.5 mm Phillips #00 screws using a screwdriver.

Step 6



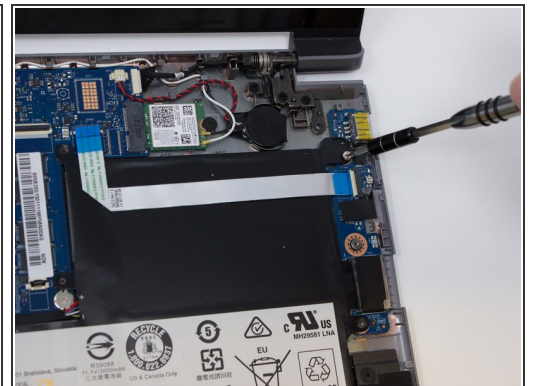
- Disconnect the battery cable from the motherboard.
- Disconnect the touch-pad cable from the motherboard.

Step 7



- Use the metal spudger along the seam between the keyboard and the bottom of the Chromebook to lift up and remove the palm rest assembly.
- ⓘ It is normal for it to click loudly when it is released. Corner tags will be harder to release than other tags and will make a loud sound.

Step 8



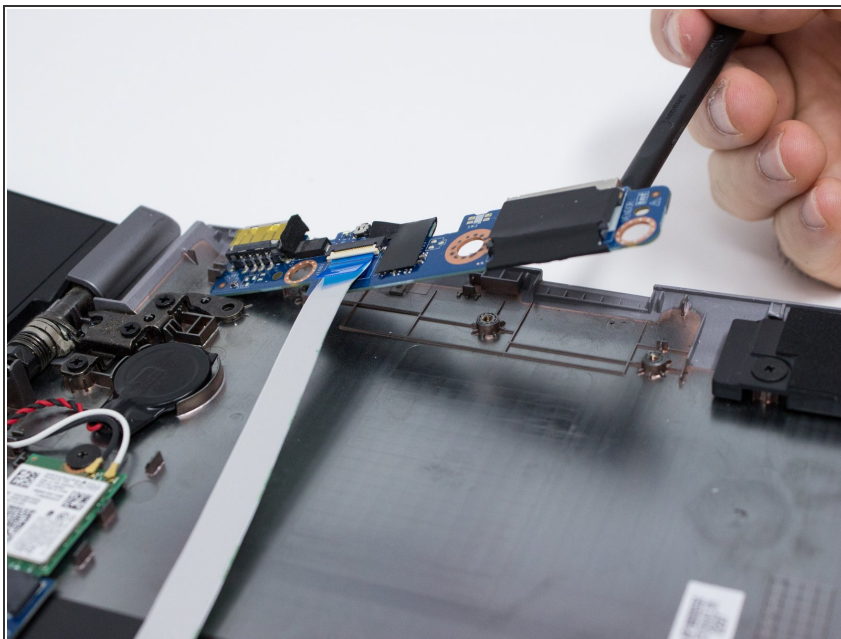
- Disconnect the USB cable from the motherboard by pulling the blue tab out of the cable.
- Remove all five 3.0 mm Phillips #00 screws which connect the battery and motherboard.

Step 9



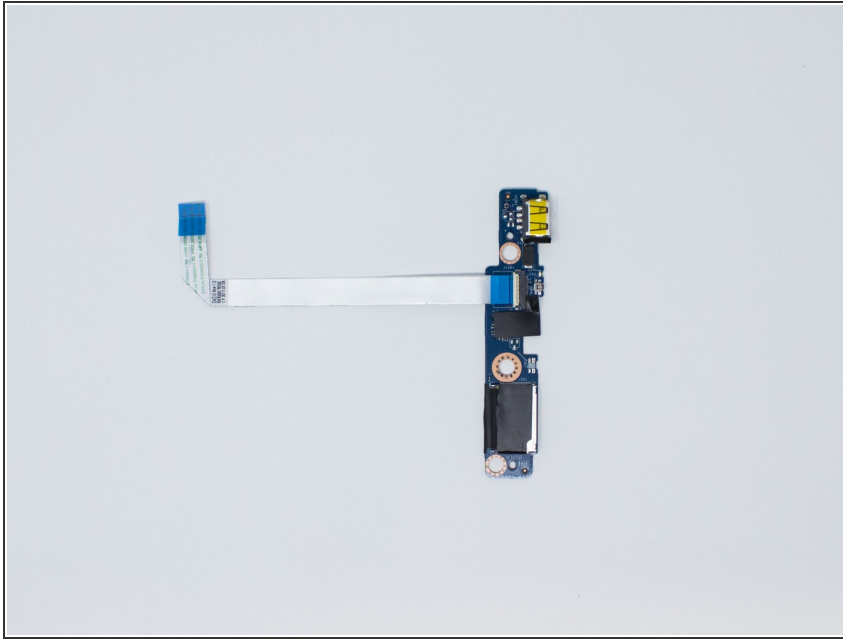
- Remove the battery.
- ❗ It is helpful to lift and hold the battery as shown.

Step 10 — I/O Board



- Once the battery has been removed, you need make sure that you have removed the I/O cable that is attached to the I/O Board.
- Using the flat end of the Spudger tool, carefully lift the I/O Board.

Step 11



- You will now be able to replace the I/O Board.

To reassemble your device, follow these instructions in reverse order.