



JBL Pulse 2 Battery Replacement

If your JBL 2 speaker isn't working correctly...

Written By: Jarid Slopek



INTRODUCTION

If your JBL 2 speaker isn't working correctly or delivering the high-quality sounds you expect, you may need to replace the battery. Replacing the battery can breathe new life into your device.

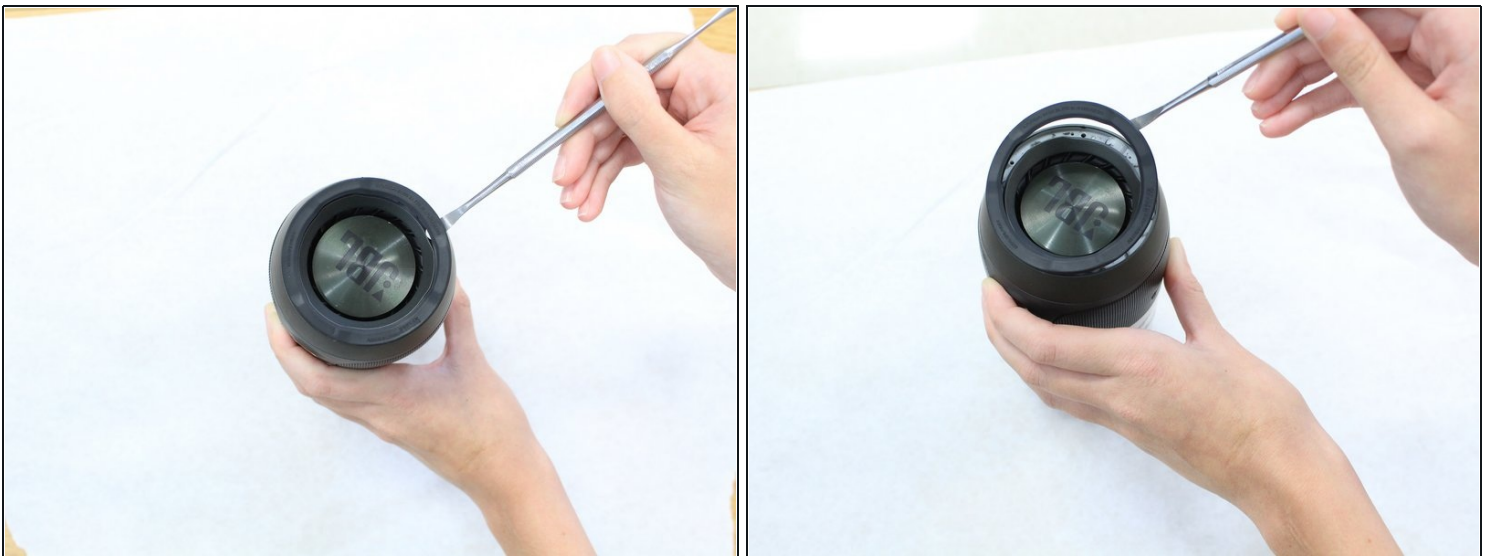
TOOLS:

[Metal Spudger](#) (1)
[Spudger](#) (1)
[Tweezers](#) (1)
[Phillips #1 Screwdriver](#) (1)

PARTS:

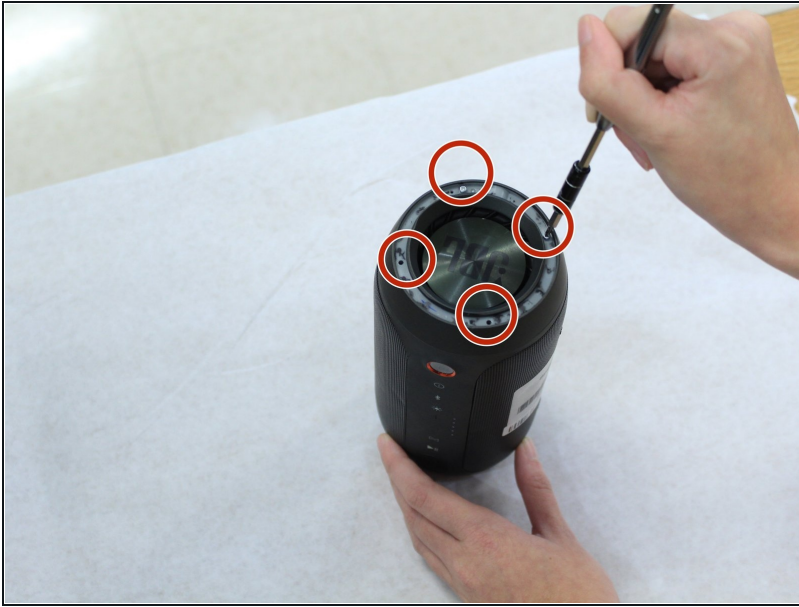
[JBL Pulse 2 Replacement Battery](#) (1)

Step 1 — Battery



- Remove the rubber rings from either end of the device.
- If there is difficulty in lifting the rings from the device, use the metal spudger.

Step 2



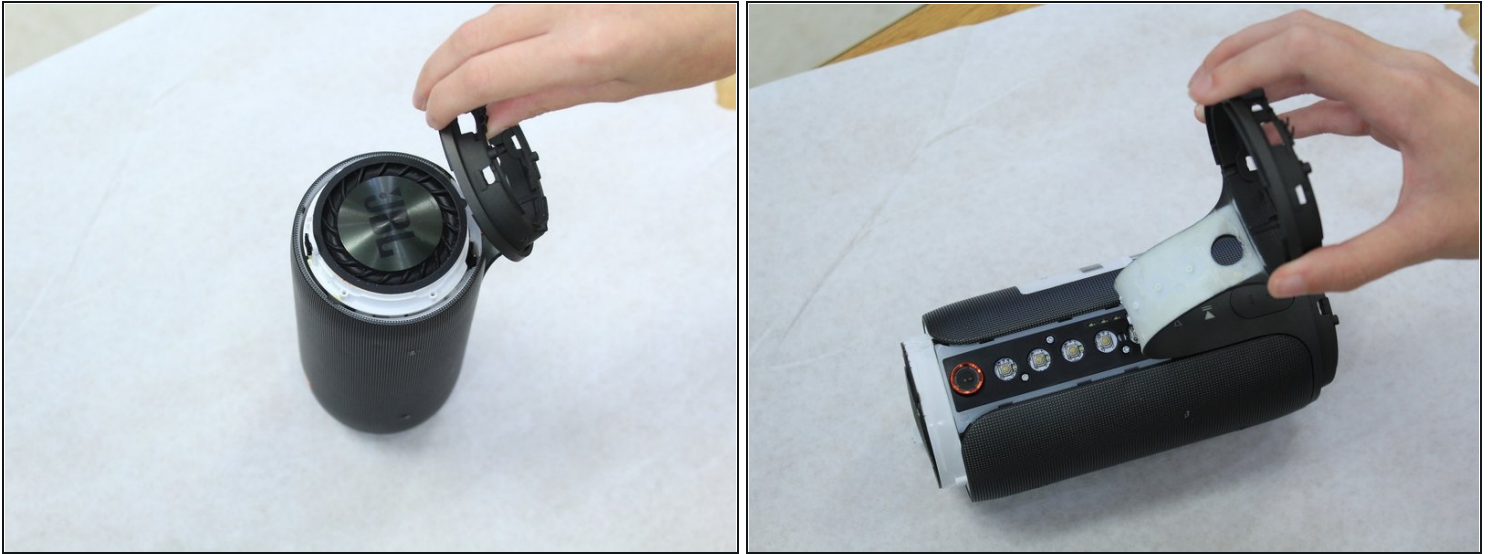
- Remove the four 4.8mm Phillips #1 screws from each end of the device with the Phillips head screwdriver.
- Lift the end pieces off of the device.

Step 3



- Remove the four 9.5mm Phillips #1 screws from each end of the device.

Step 4



- Peel one end off and slowly draw it across the length of the device until you get to the other side.

Step 5



- Remove the four 7.9mm Phillips #1 screws along the black centerpiece of the device between the camera and the auxiliary port.
- Lift up the casing and circuit board but do not try and remove the ribbon wires.

Step 6



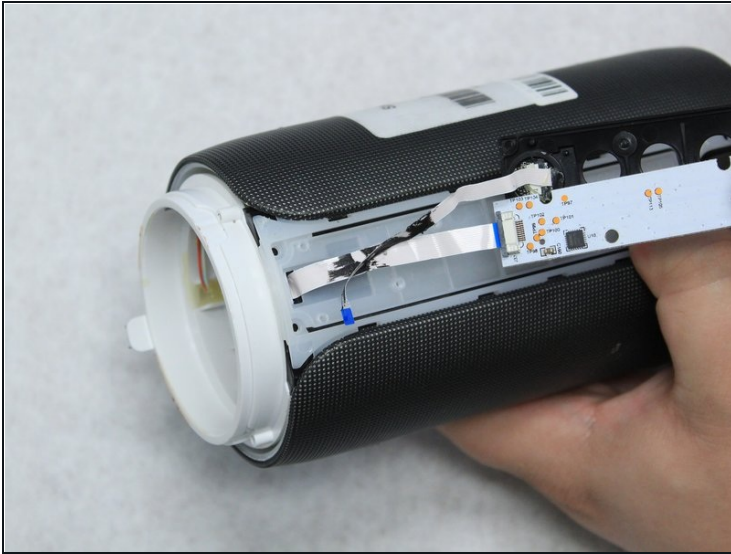
- Remove the cover from the end that the ribbon wires are attached to. It should peel off easily.

Step 7



- Unlatch the mechanism holding the ribbon wires in place, then disconnect them from the motherboard.
- To access the wires, remove some of the black glue holding them in place with the spudger.

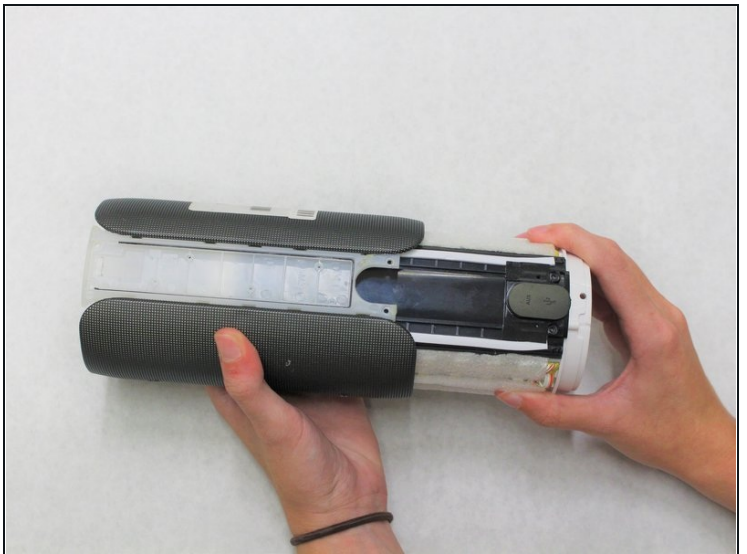
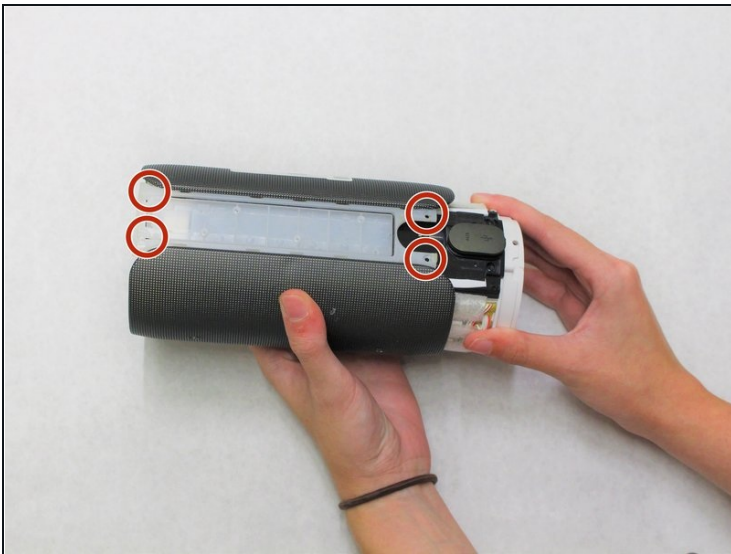
Step 8



- Slowly pull the ribbon wires out from the outside.

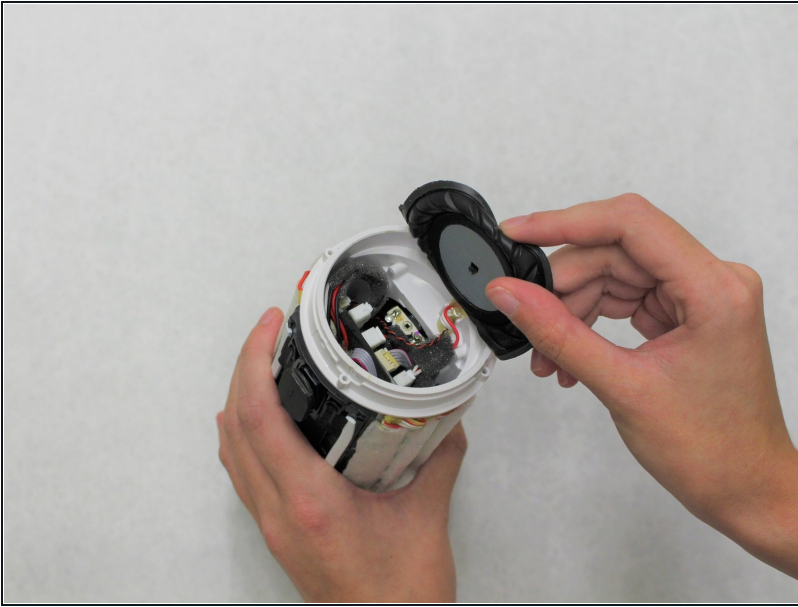
⚠ If there is too much resistance, remove more of the black glue.

Step 9



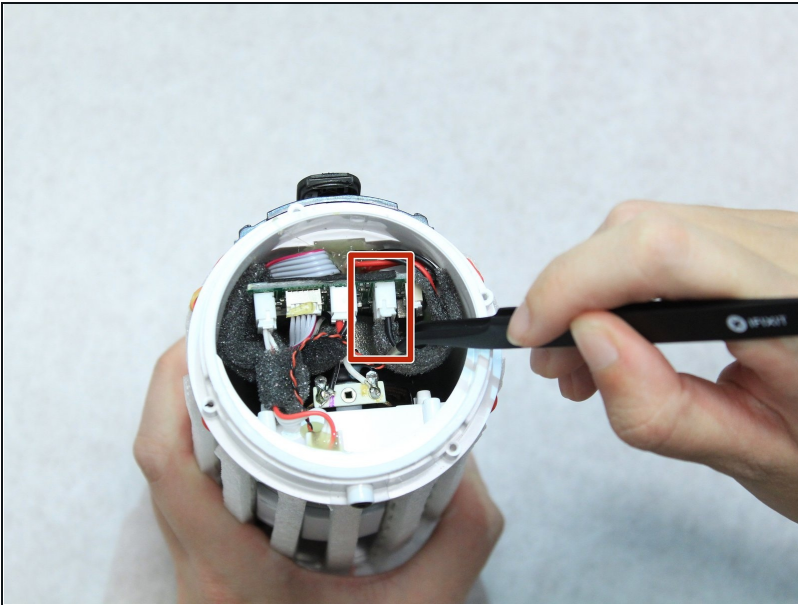
- Remove the four 7.9mm Phillips #1 screws around the edges of the center piece.
- Slide the outer casing off away from the auxiliary and micro USB port.

Step 10



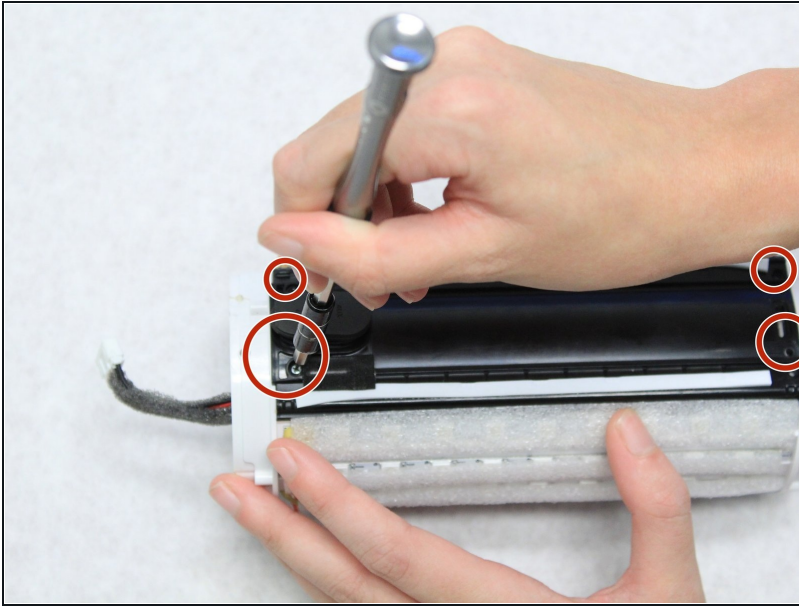
- Remove the other end of the device to access the wiring underneath it.

Step 11



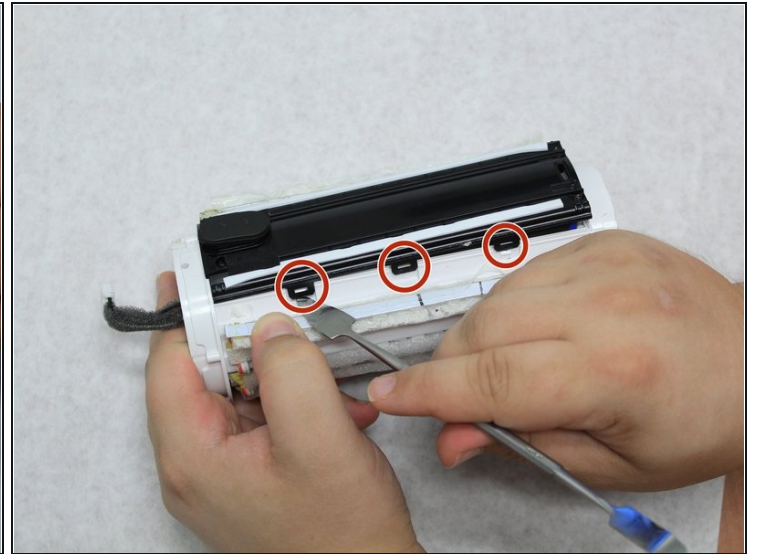
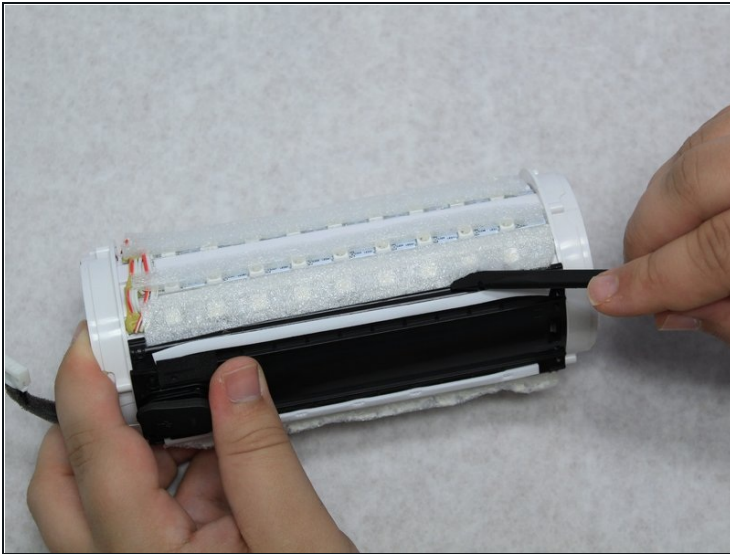
- Use the angled [tweezers](#) to disconnect the battery from the motherboard. It will take some work to remove this piece.

Step 12



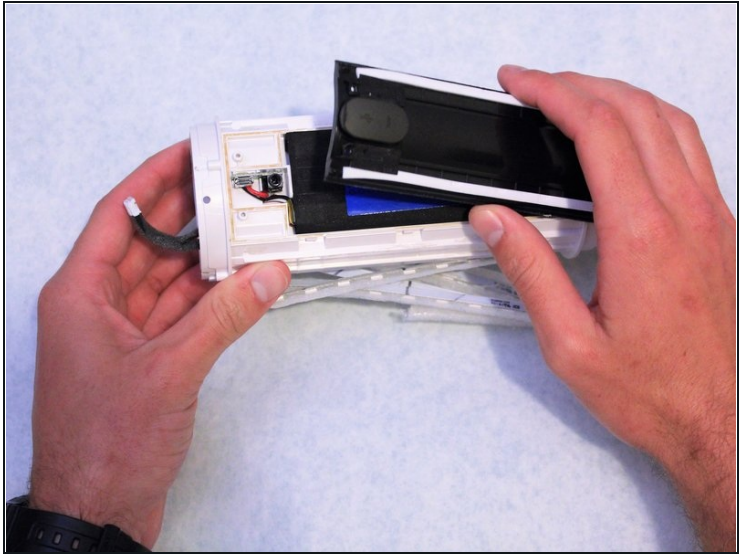
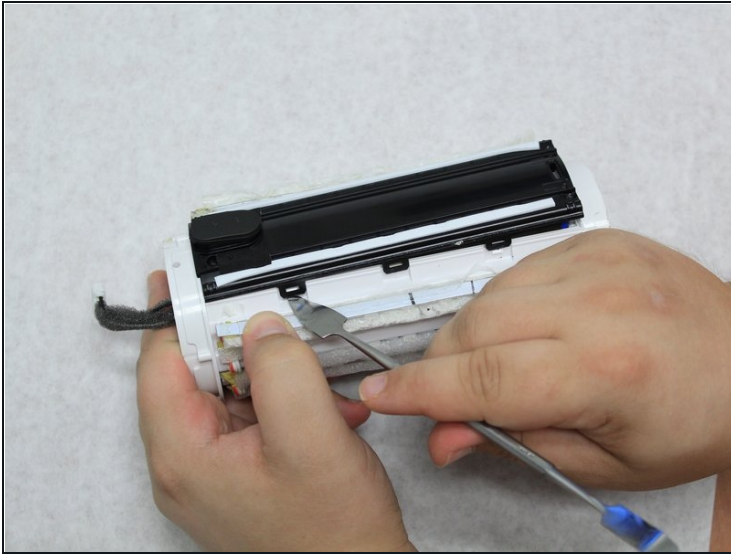
- Remove the four 7.9mm Phillips #1 screws from the black centerpiece of the device.

Step 13



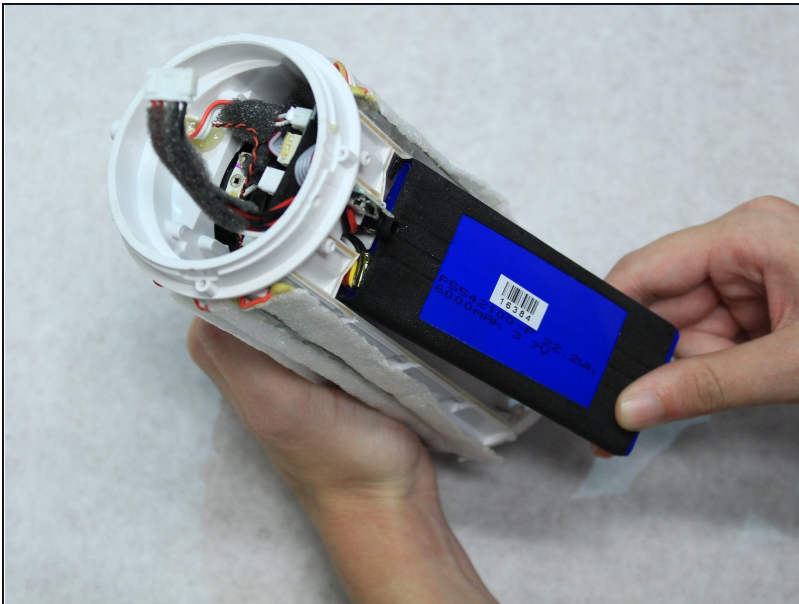
- Use the spudger to reach under the sides of the black centerpiece to access the six latches, three of which are on each side.

Step 14



- Lift the black centerpiece off with the metal spudger to reveal the battery underneath.

Step 15



- Use a hot air gun to soften the hot glue in order to fully remove the battery.

To reassemble your device, follow these instructions in reverse order.