



Altec Lansing VersA Smart External Panel Removal

Basic removal of the external panels of the Altec Lansing VersA Smart to access the internal components for other replacements.

Written By: Rachael Hopp



INTRODUCTION

If you need access to any of the internal components of your Altec Lansing VersA Smart speaker to replace components, start with this basic removal guide. This guide is a prerequisite to all other repair guides. In this guide, you will remove all external panels and coverings to expose the components within.



TOOLS:

- [4mm Nut Driver](#) (1)
 - [iFixit Opening Tools](#) (1)
 - [Phillips #1 Screwdriver](#) (1)
 - [Magnetic Project Mat](#) (1)
-

Step 1 — External Panels



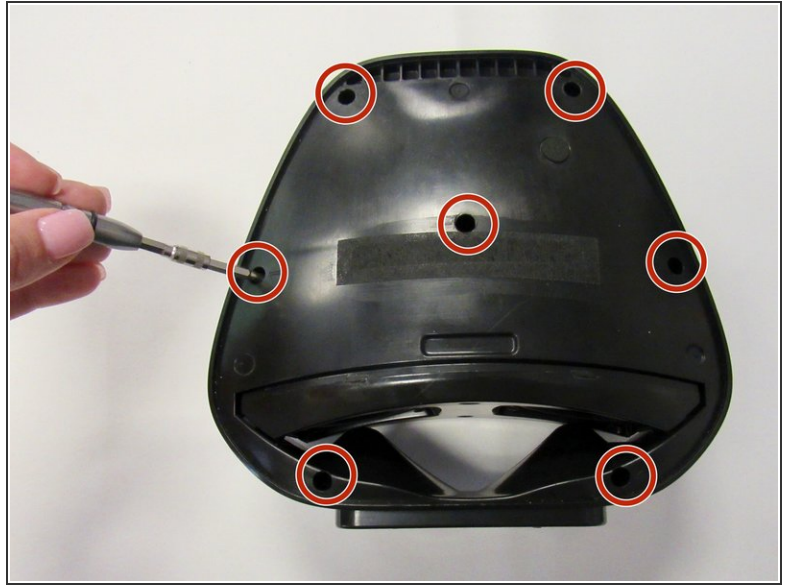
- Remove external rubber cover.

Step 2



- Use blue plastic opening tool to remove the external speaker face by placing it in the slight opening at the bottom.
- Use a lever motion, push the tool down, lifting the speaker face.
- Use fingers to grip and remove speaker face.
- Repeat on reverse side to remove the second speaker face.

Step 3



- Orient speaker so volume buttons are facing away from you, and Bluetooth and power buttons are on the left-hand side.
- Remove the seven 14mm screws using the Phillips #1 screwdriver.

Step 4



- Reorient speaker so Bluetooth and power buttons are now on the right-hand side.
 - Separate the two panels along the crease.
 - Blue plastic opening tool may be needed to separate panels.
 - Remove the panel with no buttons to expose internal area of the device.
- ☒ Motherboard and all internal components are under this panel.

