



Motorola i450 Boost Mobile Headphone Port Replacement

This guide provides instructions for access to the headphone port.

Written By: Garrison Stevens



INTRODUCTION

The headphone port allows the user to redirect the speaker output to a pair of headphones when the headphones are plugged into the port.



TOOLS:

- [Anti-Static Project Tray](#) (1)
 - [Spudger](#) (1)
 - [T5 Torx Screwdriver](#) (1)
 - [T6 Torx Screwdriver](#) (1)
-

Step 1 — Back Cover



- Place the phone on a flat surface with the front facing down.
- Insert your finger under the gray plastic cover at the bottom end of the phone.
- Lift the cover off the phone.

Step 2 — Battery



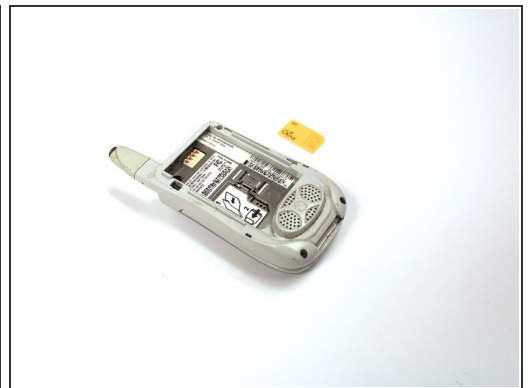
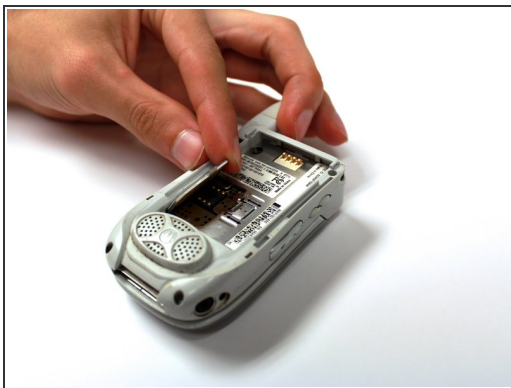
- Place your thumb in the notch in the lower left corner of the battery compartment.
- Lift the battery up and away from the phone.
- Remove the battery.

Step 3 — SIM Card



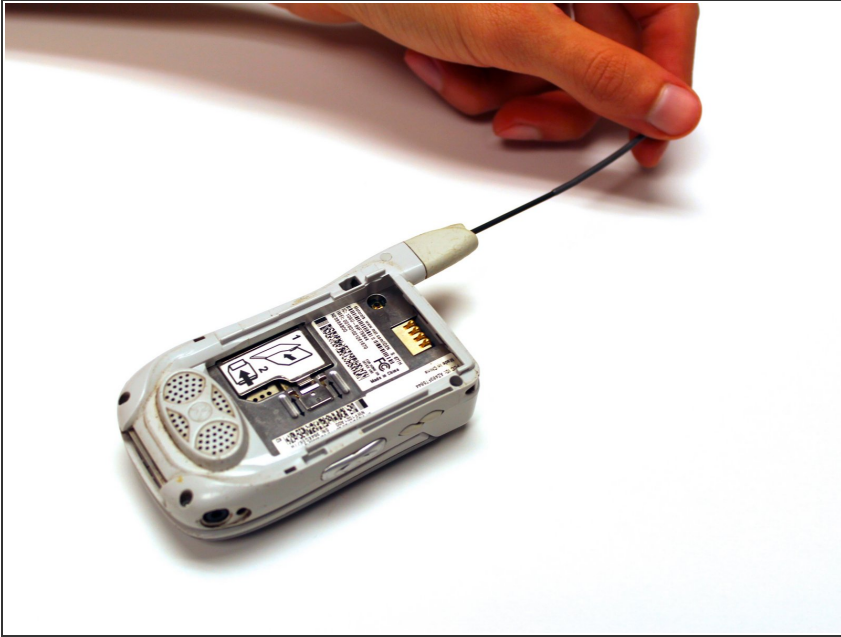
- Locate the metal slider that holds the SIM card in place.
- Push the slider away from the metal flap which contains the SIM card. The flap will pop up.

Step 4



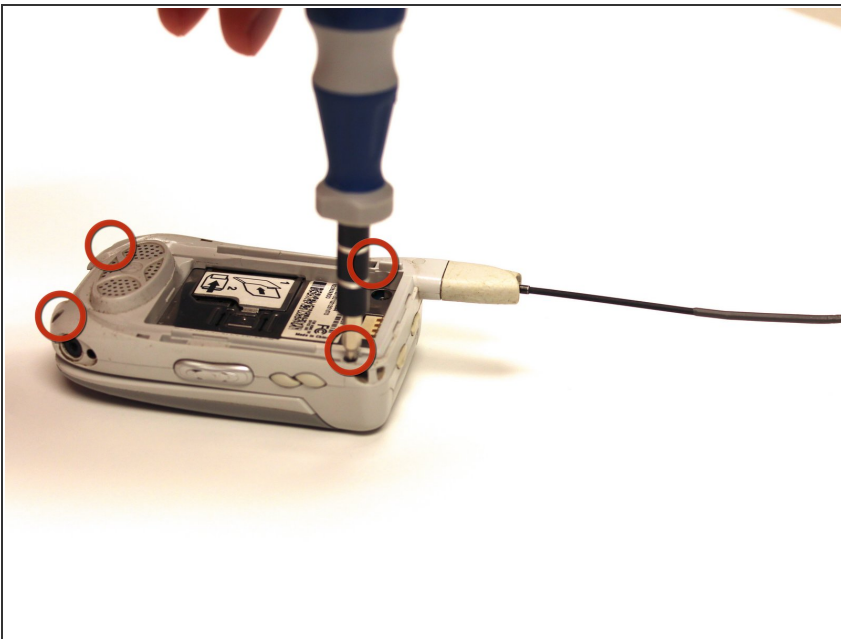
- Lift the metal flap to gain access to the bottom of the SIM card.
- Remove the SIM card by sliding it out parallel to the bottom of the flap.

Step 5 — Circuit Board



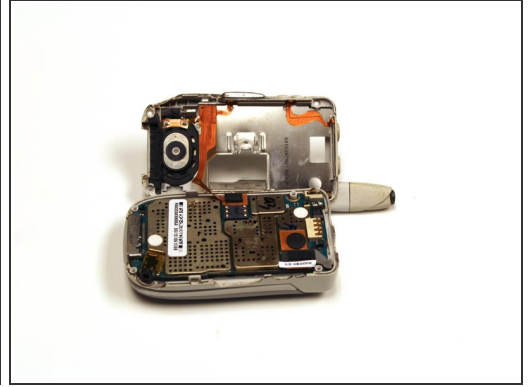
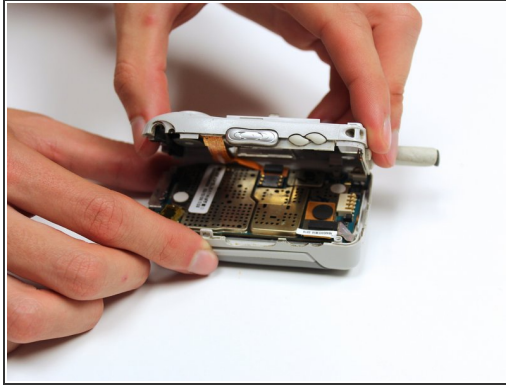
- Extend the antenna.

Step 6




- Remove the four 4.8 mm Torx T6 screws from the corners of the back of the phone.
- ⓘ If the antenna is not fully extended, the top left screw will not be accessible.

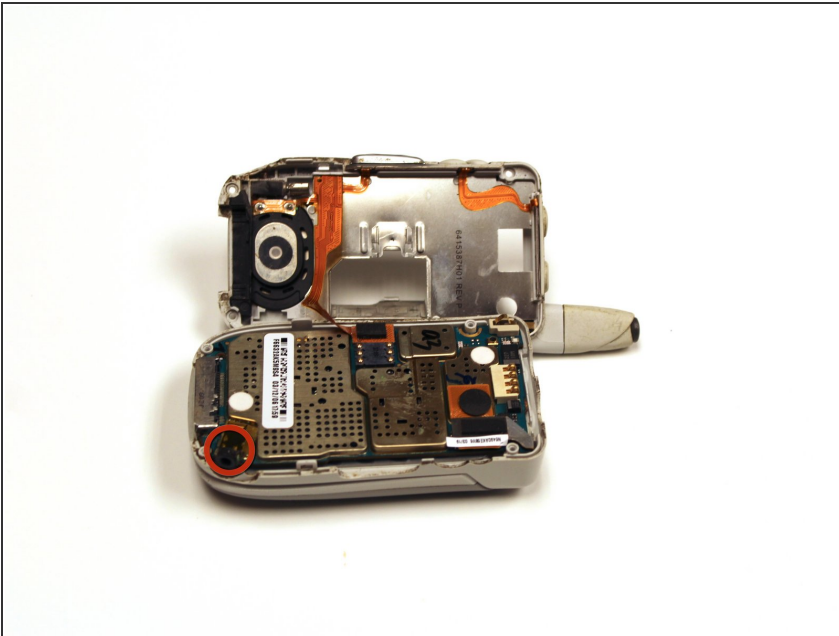
Step 7




- Gently lift off the back half of the phone and set to the side.

 Permanent circuit connections prevent the cover from completely separating from the phone. Do not attempt to disconnect these circuits.

Step 8 — Headphone Port



- Locate the headphone port at the bottom right corner of the circuit board.
-  The headphone port cannot be removed from the phone. If cleaning the port does not fix the problem, the entire phone must be replaced.

To reassemble your device, follow these instructions in reverse order.