



Asus ROG G750JM-BS17N23 Back Plate Replacement

If you are having any problems involving the hardware or software of your computer, use this guide to accessing your hard drive.

Written By: Tanner



INTRODUCTION

To access your hard drive, remove the back plate as shown in these steps.



TOOLS:

- [Phillips #2 Screwdriver](#) (1)
 - [iFixit Opening Tools](#) (1)
-

Step 1 — Back Plate



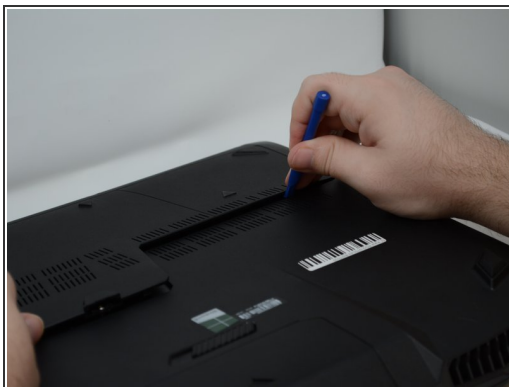
- With the computer upside down, lift up on the rubber cap on the back plate to access the captive Phillips #2 screw.

Step 2



- Retract the Phillips #2 screw until the cover is loose.
- ⓘ The screw will not come all the way out.

Step 3



- Pry around the edges of the plate using a plastic opening tool until the plate is removed.

To reassemble your device, follow these instructions in reverse order.