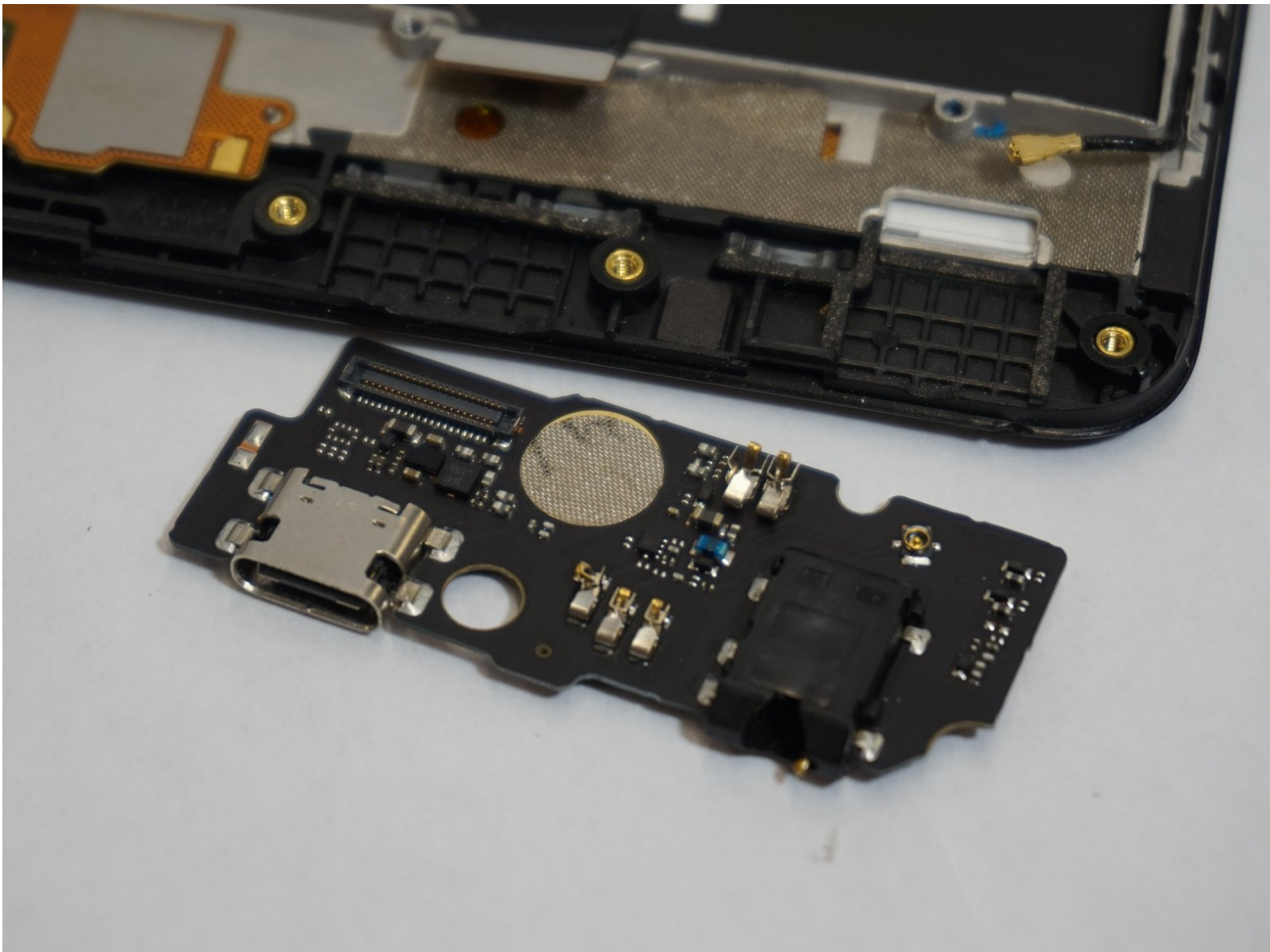




# ZTE Blade Z Max Charging Port Card Replacement

Replace the charging port card inside of your ZTE Blade Z Max. This includes the USB plug, 3.5mm headphone jack, and phone speaker.

Written By: Ronald Weimar



## INTRODUCTION

This car contains the charging port, headphone jack, and rear speaker.

The easiest way to replace any of the components on this board is to simply replace the entire board. Otherwise, you would have to desolder the faulty component and solder in a new one.

This replacement can be done without removing the battery, but due to the nature of the parts being replaced, it is highly recommended that the battery is removed before attempting this replacement.



### TOOLS:

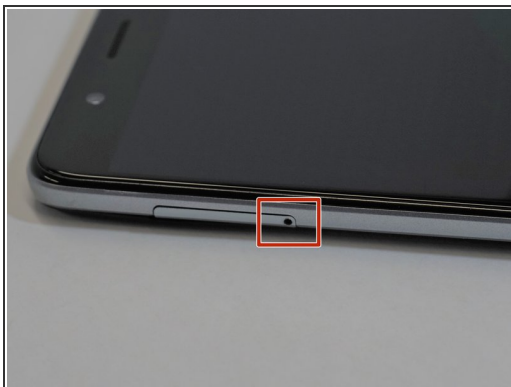
- [JIS #000 Screwdriver](#) (1)
- [Tweezers](#) (1)
- [SIM Card Eject Tool](#) (1)
- [iFixit Opening Picks set of 6](#) (1)
- [T2 Torx Screwdriver](#) (1)
- [Spudger](#) (1)
- [iFixit Opening Tools](#) (1)



### PARTS:

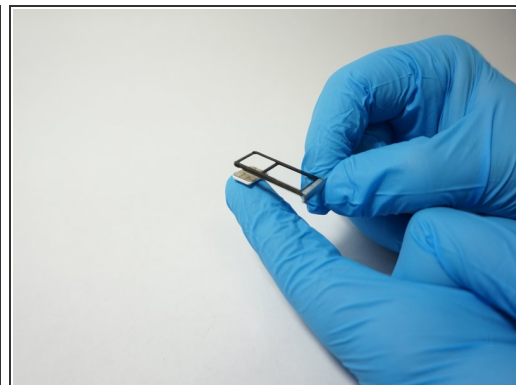
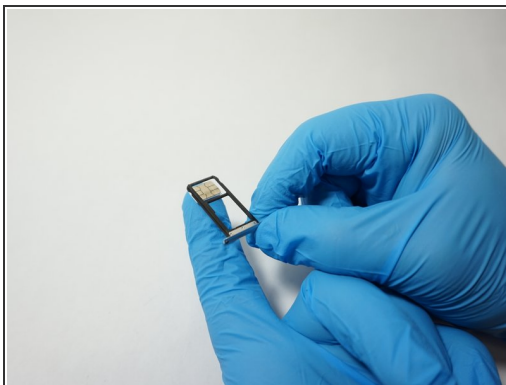
- [ZTE Blade Z Max Charging Port/Headphone Jack Card](#) (1)

## Step 1 — SIM Card



- Turn the device on its side with the buttons away from you.
- Using the SIM Card Eject Tool, insert the narrow end into the ejection hole.
- Press firmly into the hole until the SIM card tray pops out far enough to grab with your fingers.

## Step 2



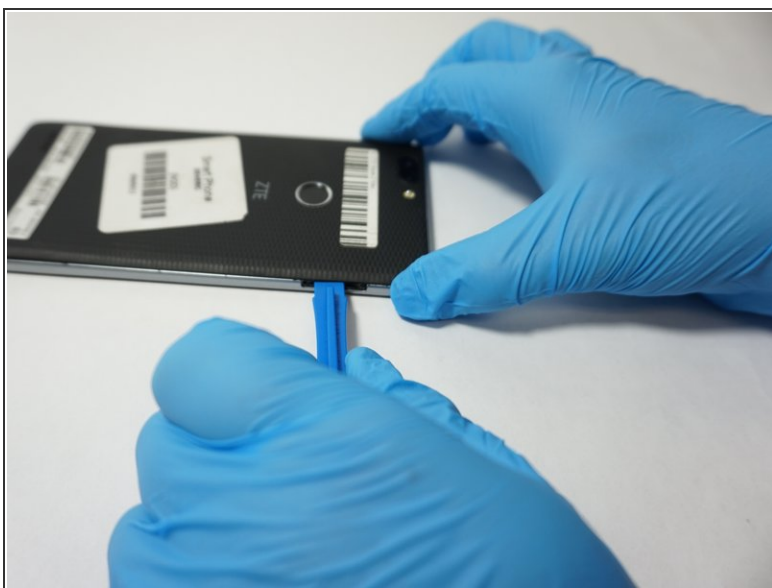
- Pull the tray out with your fingers .
- Remove the SIM card.

### Step 3 — Fingerprint Sensor



- Remove the one T2 screw from the side of the phone near where the SIM card tray was.

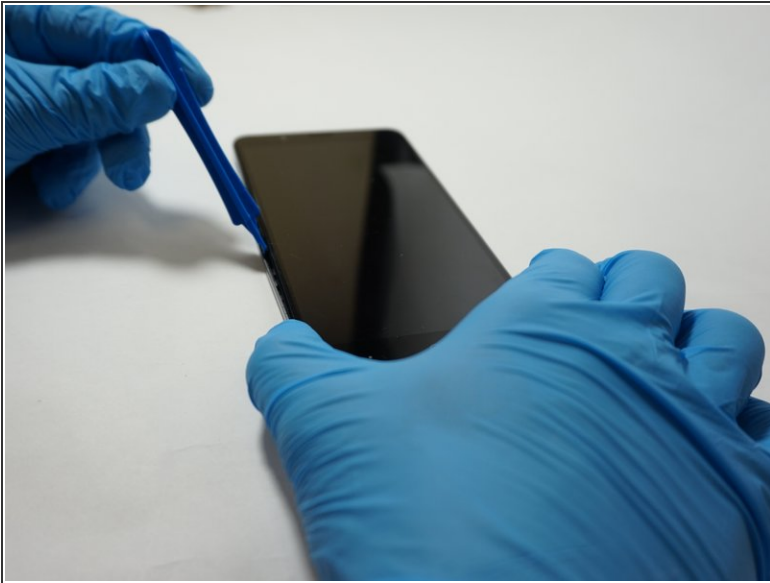
### Step 4



- Insert a plastic opening tool into the space where the SIM card tray used to be.
- Gently pry the back away from the phone frame until you hear and audible click of the back separating.

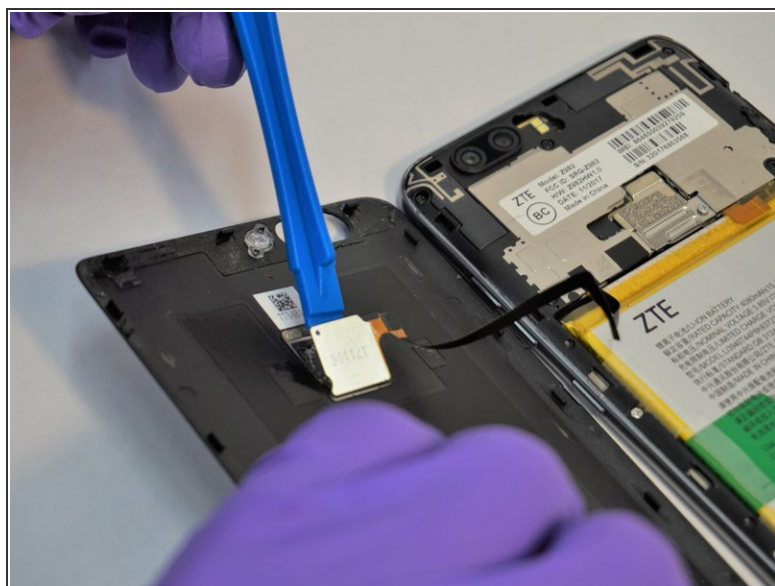


## Step 5



- Insert the plastic opening tool into the space you created between the phone back and frame.
- Slide the plastic opening tool along the outside of the phone, underneath the back, to separate the rest of the clips holding the back onto the frame.

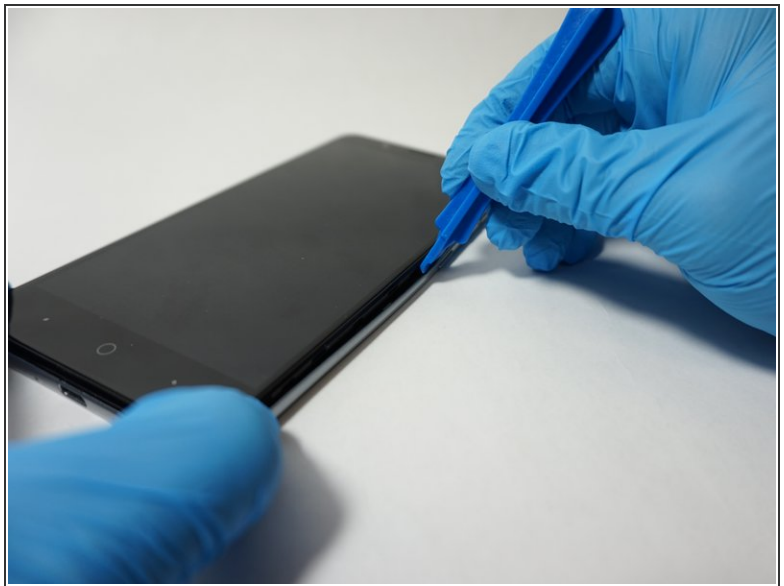
## Step 6



- Rotate the back over to the side, being careful not to damage the fingerprint sensor ribbon cable.
- Use a plastic opening tool to separate the fingerprint sensor from the back of the phone.
  - ☑ On reassembly, add a piece of simple scotch tape to hold the fingerprint sensor to the phone back.
- Set the phone back aside.

[illegible]

- Remove the 6 silver 2.9mm screws from the back of the phone with a JIS #000 bit.
- Remove the 11 black 3.5mm screws with the same JIS #000 bit.



- Turn the phone over, with the screen up.
- Insert the opening tool between the screen and the silver trim that surrounds it.
- Run the plastic opening tool around the circumference of the phone to separate the clips of that hold the trim to the frame.

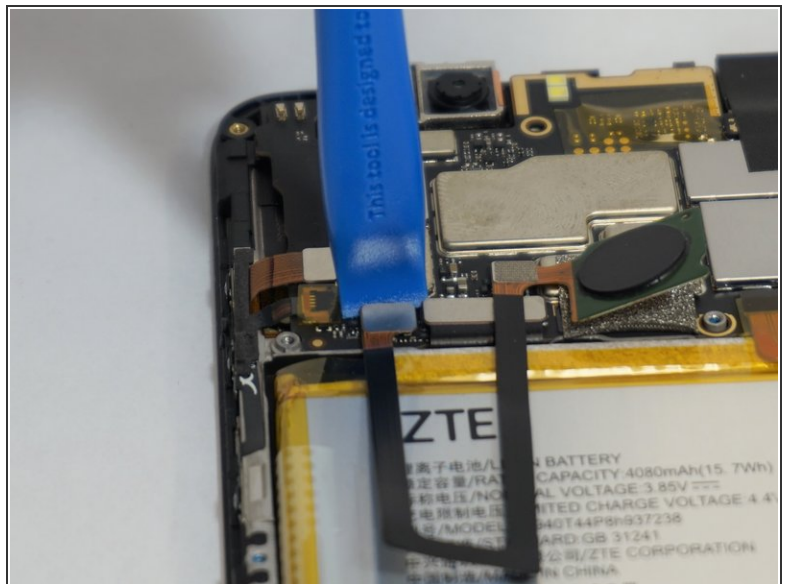
This document was generated on 2020-11-28 06:56:02 AM (MST).

## Step 9



- Turn the phone back over, with the screen down.
- Lift the trim piece off of the phone and set aside.

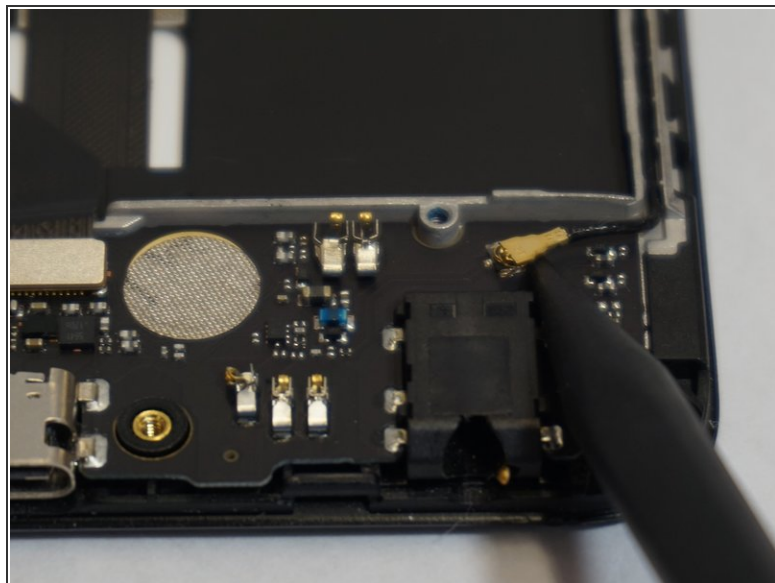
## Step 10



- Using a plastic opening tool, separate the fingerprint ribbon connector from the motherboard.

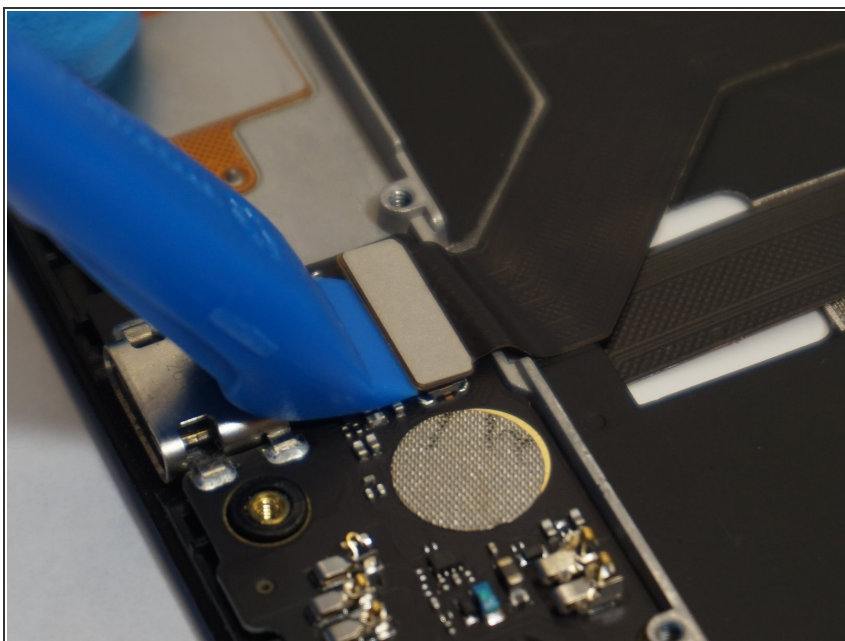


## Step 11 — Charging Port Card



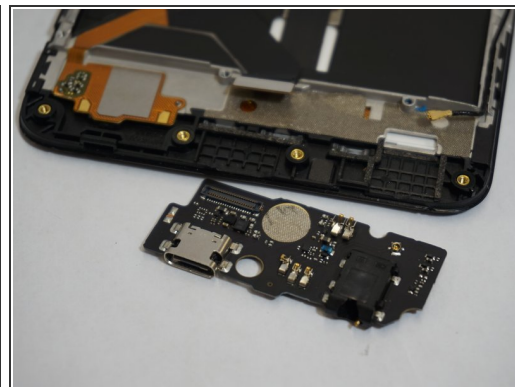
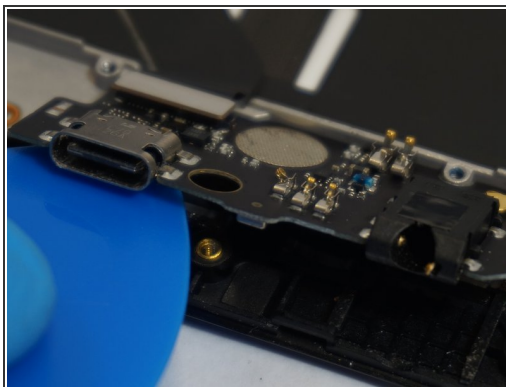
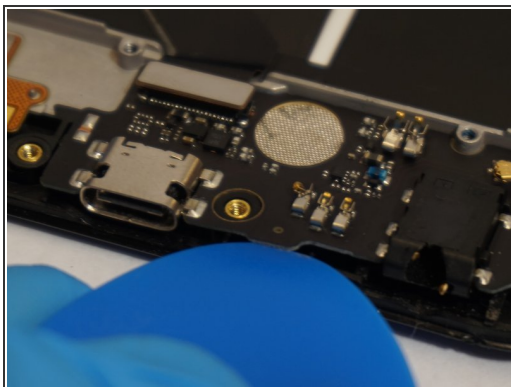
- Use a spudger to pry up the the antenna connector on the top right of the charging port card.

## Step 12



- Use a plastic opening tool to pry up and remove the primary connector for the card, located on the top left of the card.

## Step 13



- Use a plastic opening tool, spudger, or opening pick to separate the bottom edge of the card away from the phone.
- Lift the bottom edge of the card high enough that you can grab it with your fingers, and simply remove it from the phone.

To reassemble your device, follow these instructions in reverse order.