



# OLPC XO-1.5 Screen Portion Replacement

Written By: Sam Clark





## TOOLS:

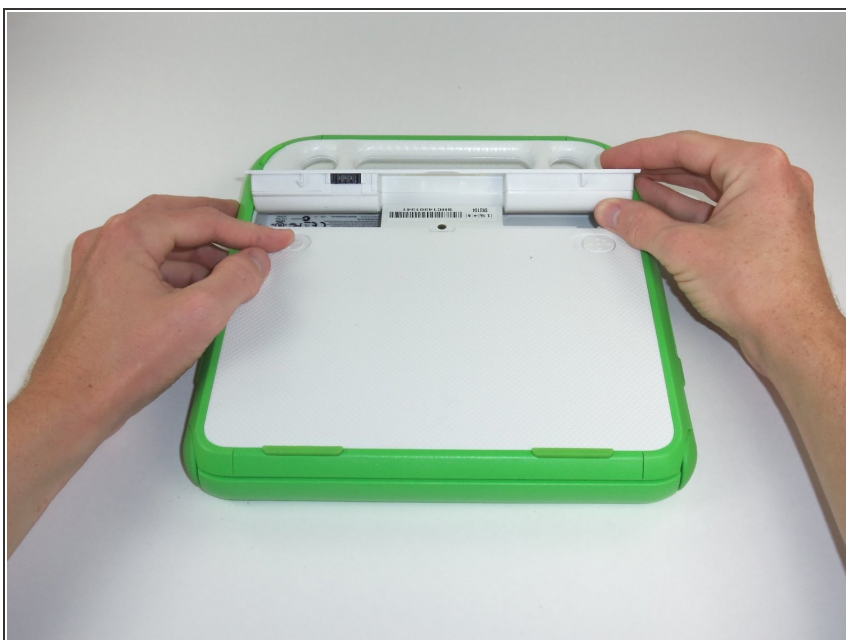
- [Phillips #0 Screwdriver](#) (1)
  - [Spudger](#) (1)
-

## Step 1 — Battery



- Place the laptop upside down with the handle away from you.

## Step 2



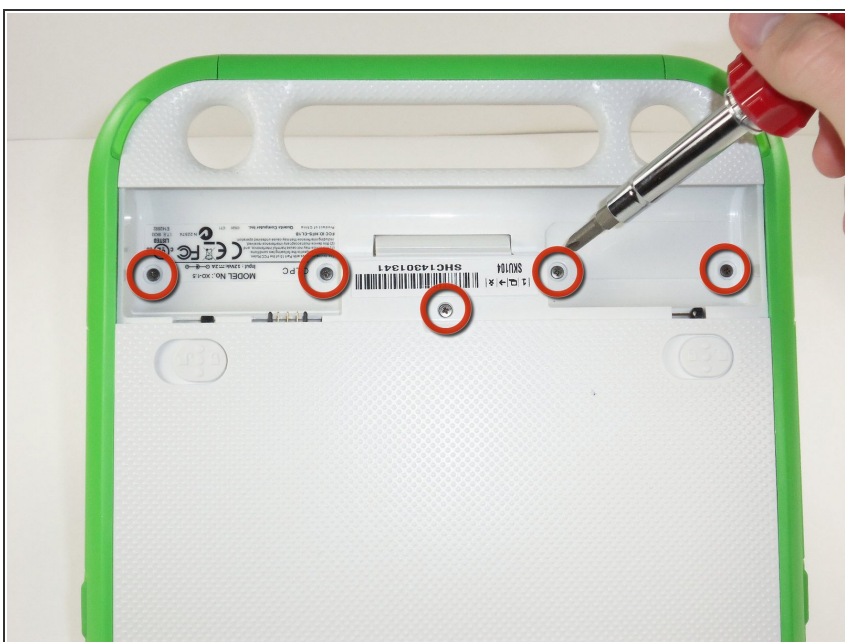
- Slide the tabs out, towards the green edges, to show the open lock symbol.
- ⓘ The right tab will stay in place, but the left tab must be held in position while you remove the battery.

## Step 3



- Lift the middle of the battery to remove it.

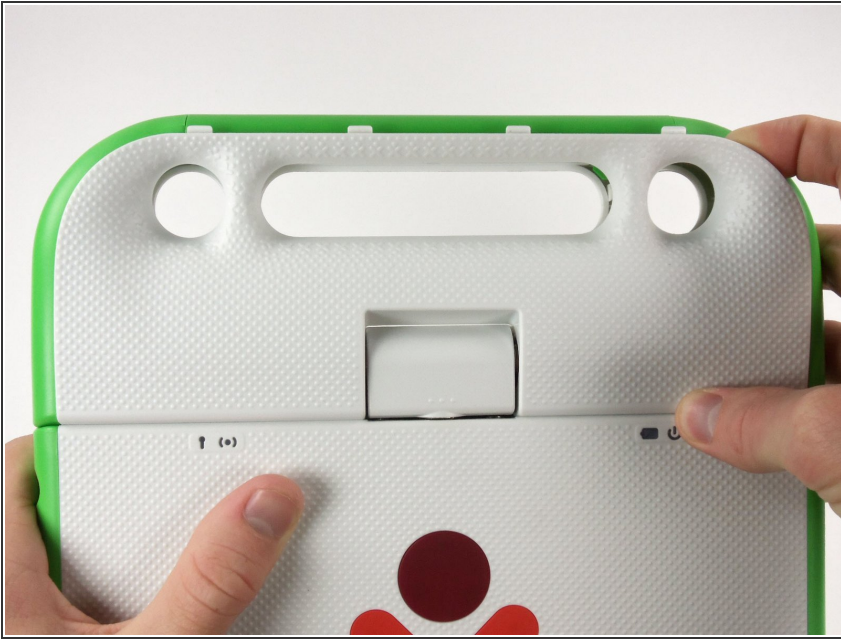
## Step 4 — Screen Portion



- Using the Phillips screwdriver, unscrew the 5 size M2 x .4 x 4mm screws underneath the battery.

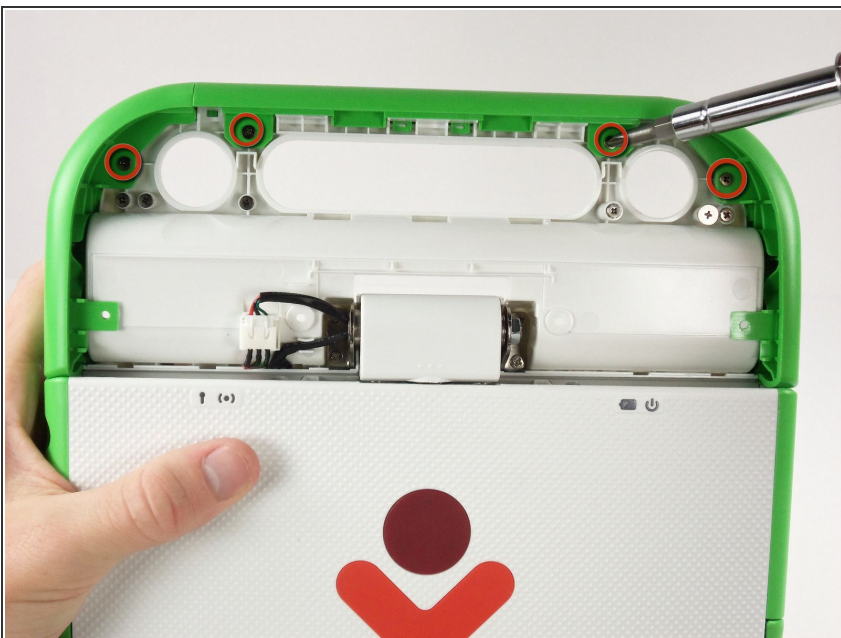


## Step 5



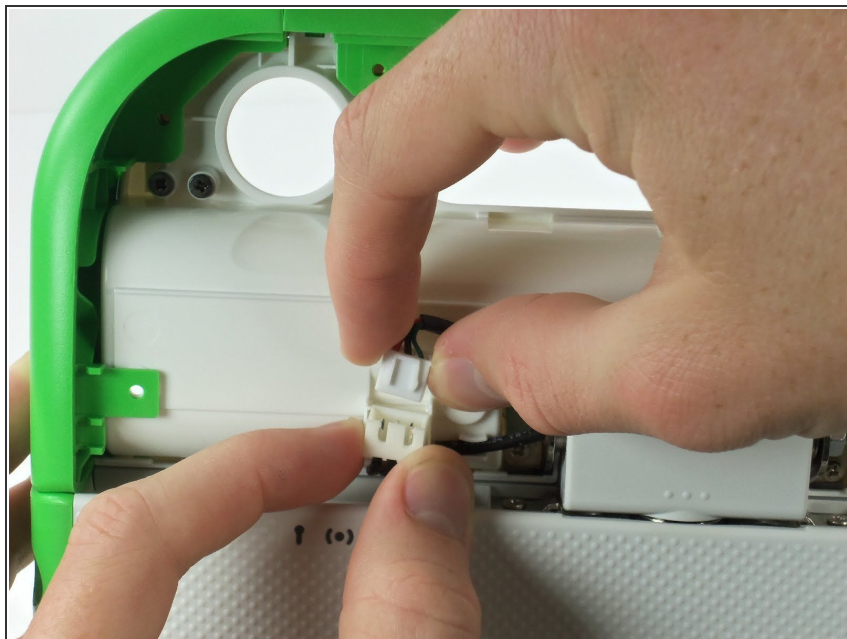
- Turn the laptop so that the red XO symbol is right side up.
  - Pull off the white plastic panel with your fingers. There will be 4 tabs that hold the white panel in place. It will require moderate force to remove.
- ❗ If you are having difficulty pulling off the white plastic panel, use a spudger.

## Step 6



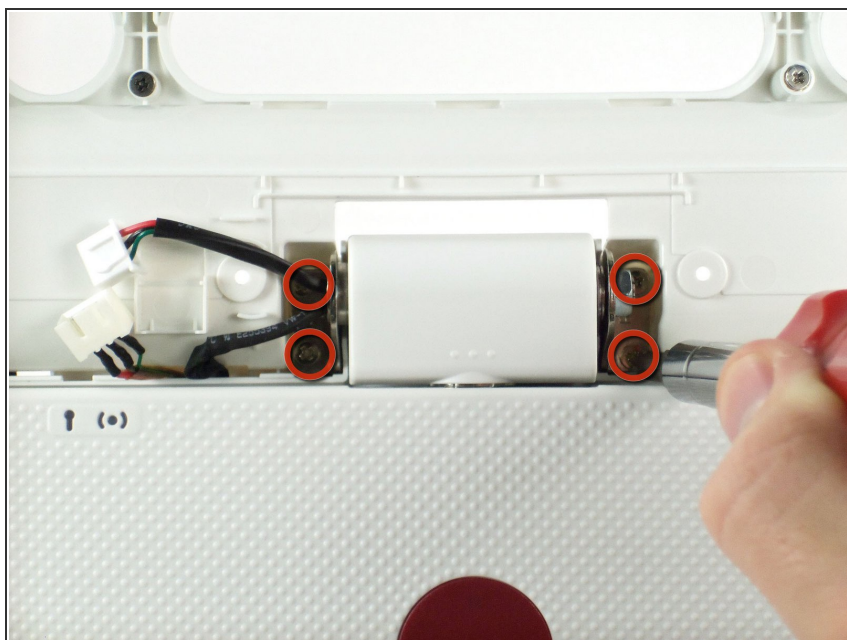
- Unscrew the 4 size M2 x .4 x 4mm screws that are connected to the green plastic.

## Step 7



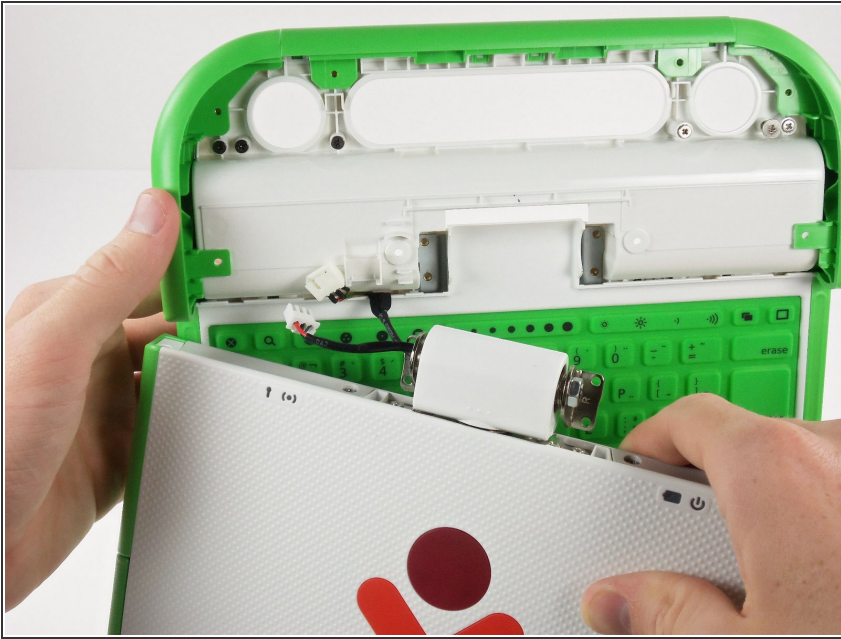
- Unplug the white connector with black cables on each end on the left of the hinge.

## Step 8



- Using the Phillips screwdriver, unscrew the 4 size M3 x .5 x 5mm screws holding the metal to the rest of the laptop.

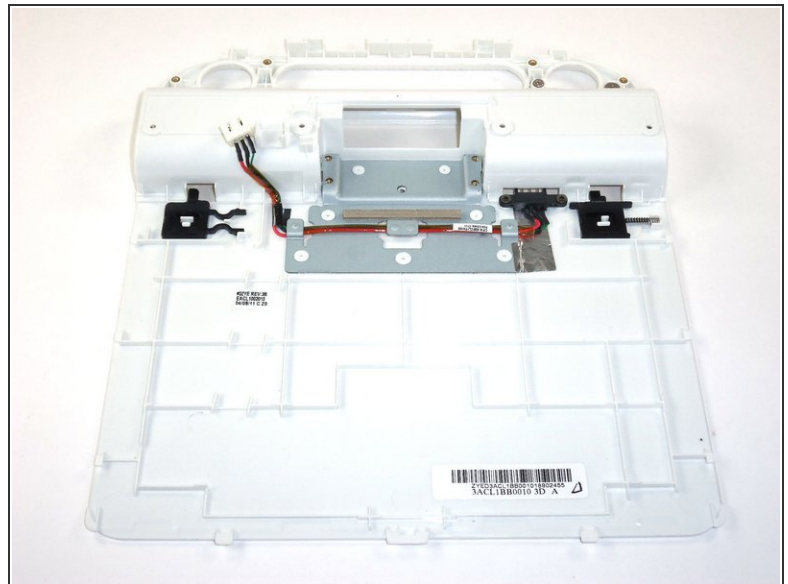
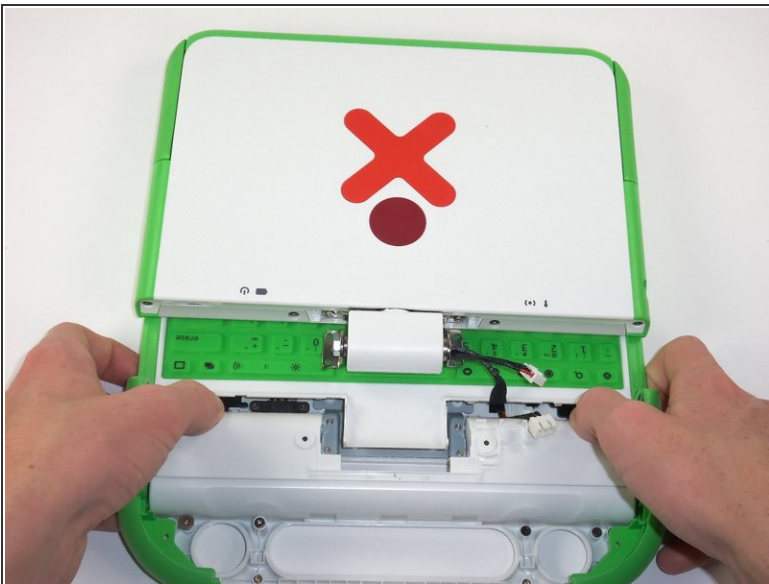
## Step 9



- Carefully lift the top half that has the screen away from the bottom half.

**⚠ There is still one black cable connecting the two halves. Be sure not to break it.**

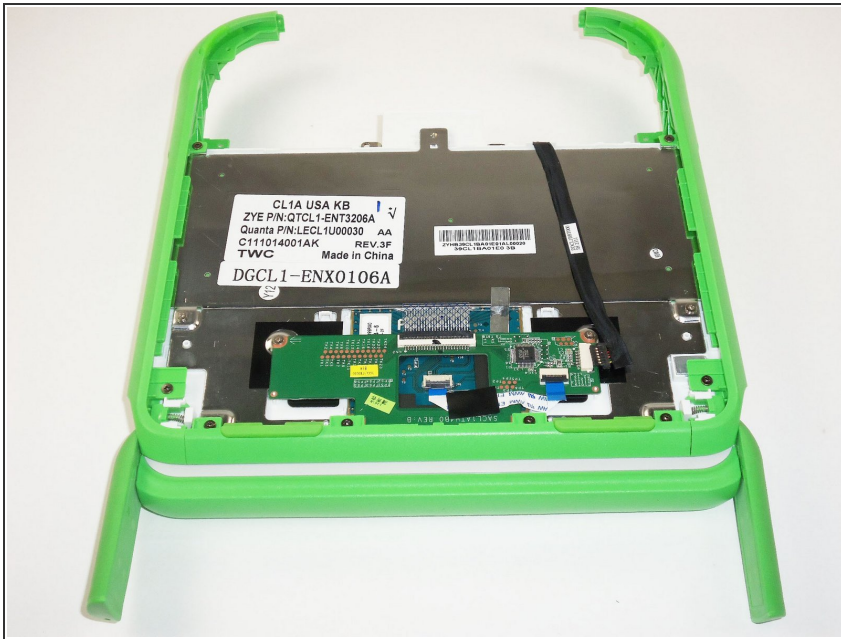
## Step 10



- Rotate the laptop 180 degrees so that the XO logo is now upside down.
- Remove the center part of green handle. Push the white plastic back cover down away from the keyboard and top half. This should separate easily from the rest of the device.



## Step 11



- Turn the laptop upside down, exposing the bottom inside of the keyboard.
- ❗ This is similar to how the laptop was positioned when removing the battery, except now the white panel is gone.

## Step 12



- Slide the black cable (the one that holds the two halves together) out of its connector.



## Step 13



- Separate the screen portion from the rest of the laptop.

To reassemble your device, follow these instructions in reverse order.